



iMac Intel 24" EMC 2111 LCD Replacement

Replace a broken LCD on your iMac Intel 24" EMC 2111.

Written By: Andrew Bookholt



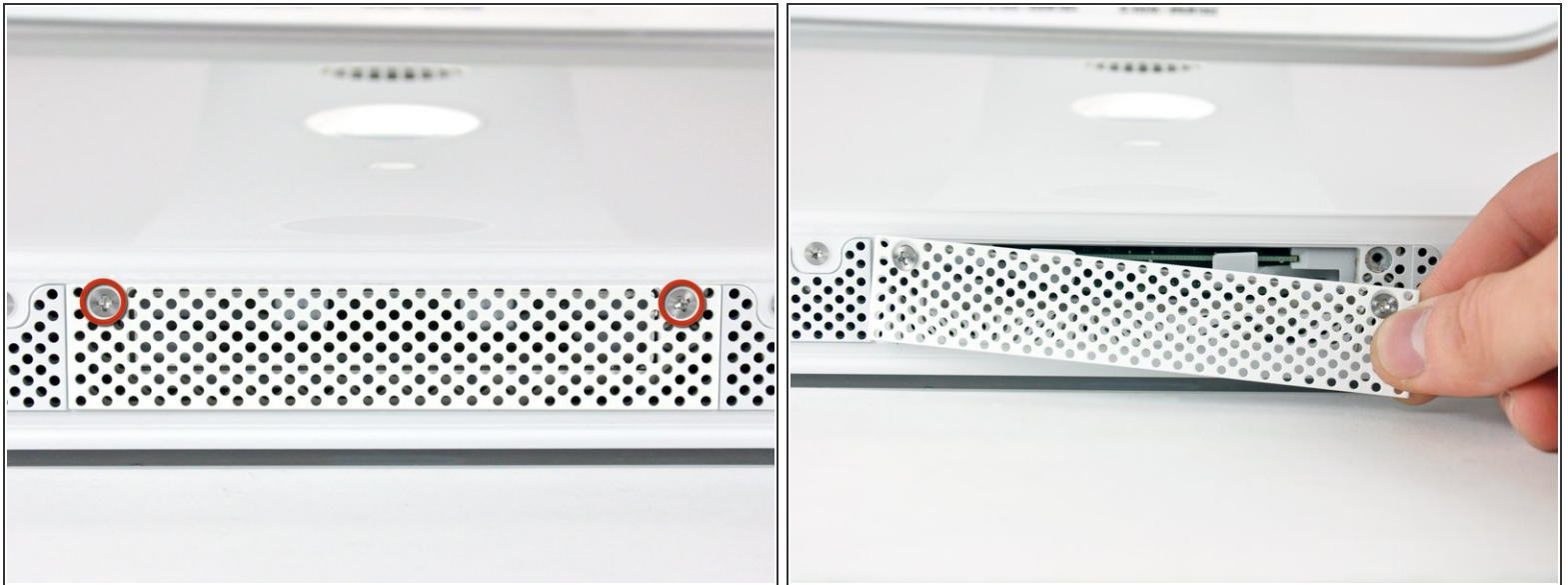
INTRODUCTION

Use this guide to replace a broken LCD.

TOOLS:

- [Phillips #1 Screwdriver](#) (1)
 - [Spudger](#) (1)
 - [T6 Torx Screwdriver](#) (1)
 - [T8 Torx Screwdriver](#) (1)
-

Step 1 — Access Door



- Loosen the two Phillips screws securing the access door to your iMac.
- ⓘ Both screws remain captive within the access door.
- Remove the access door.

Step 2 — Front Bezel



- Remove the following screws along the lower edge of your iMac:
 - Three 6 mm T8 Torx screws
 - One 8 mm T8 Torx screw

Step 3



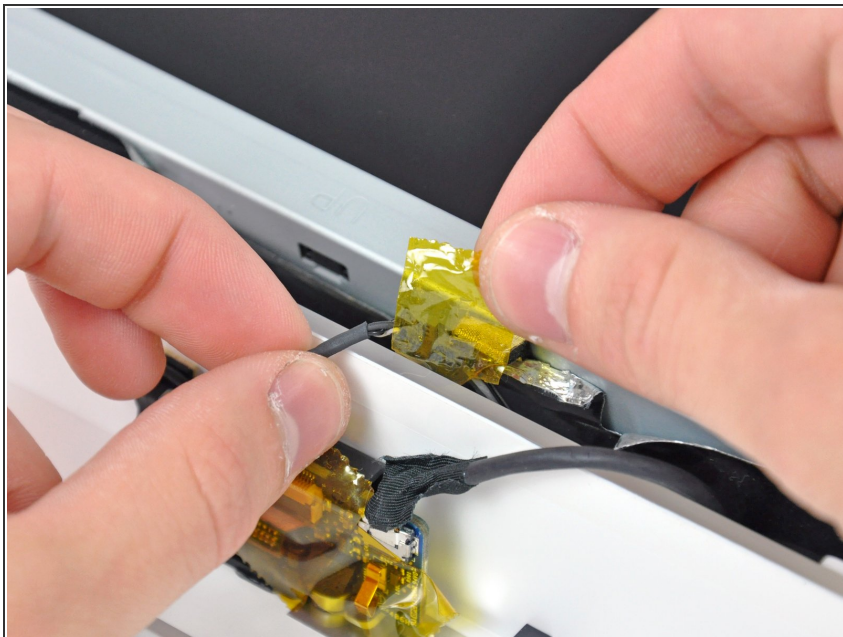
- ① Lay your iMac stand-side down on a flat surface.
- To lift the front bezel off the iMac, simultaneously:
 - Use your thumbs to press in the RAM arms and hold the iMac down.
 - Use your index fingers to pull the small bridge of material on the front bezel toward yourself.
 - Pull the front bezel up with your index fingers.
- Once the small bridge of material has cleared the RAM arms, lift the front bezel by its lower edge just enough to clear the bottom edge of the rear case.

Step 4



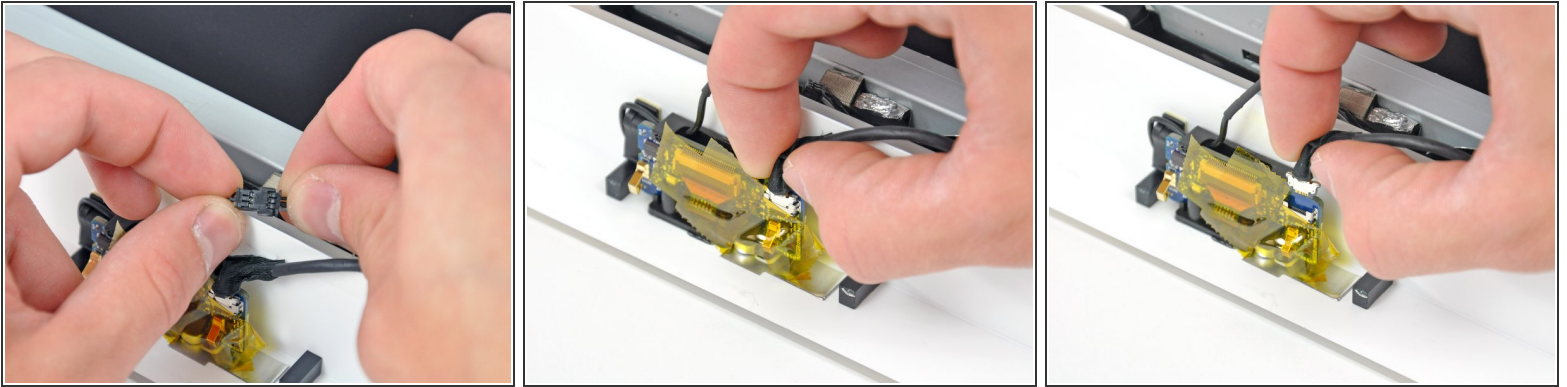
- Lift the front bezel off the rear case and rotate it away from the bottom edge of the iMac, minding the camera and microphone cables still attached to its upper edge.
- ⓘ The third picture shows the top front bezel brackets and their slots cut into the top edge of the iMac's rear case.
- ⚠ Do not completely remove the front bezel, as it is still attached by the camera/microphone cables.

Step 5



- ⓘ If necessary, remove the strip of tape covering the microphone cable connector.
- ★ The microphone connector is located near the inside of top edge of your iMac.

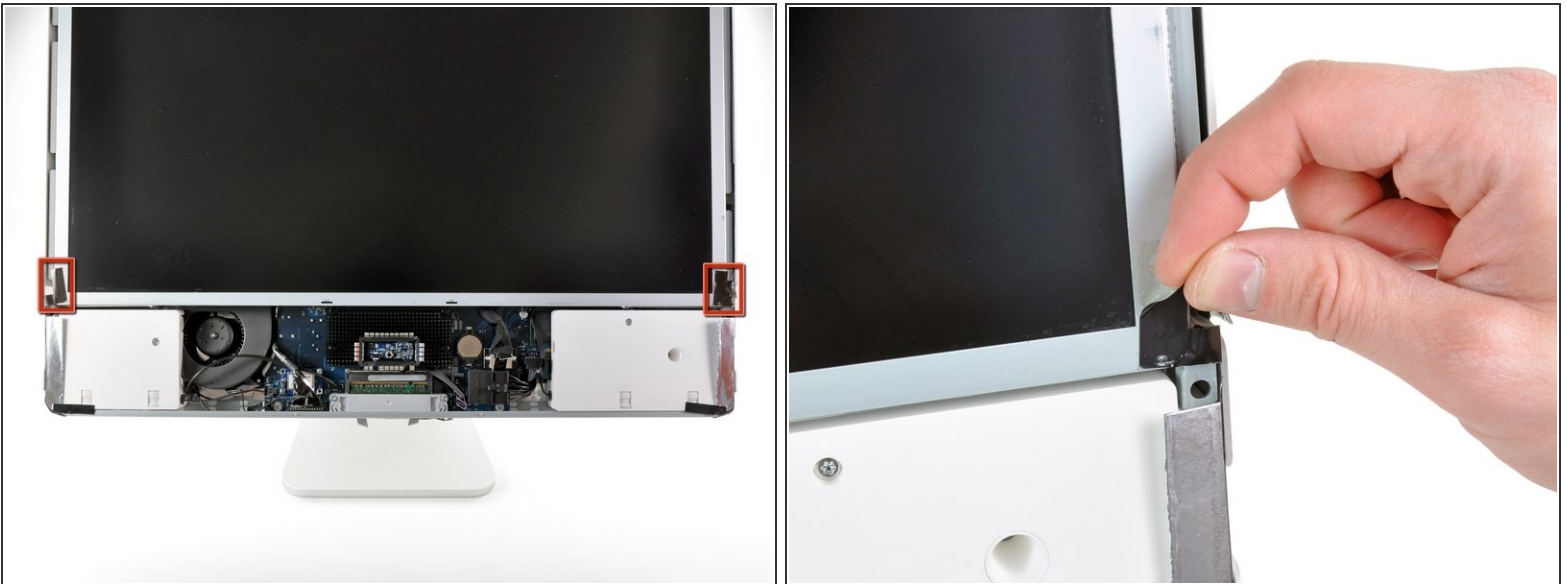
Step 6



- Disconnect the microphone cable.
- Disconnect the camera cable by pulling its connector away from the socket on the camera board.

⚠ The camera cable connector and socket are delicate and easily bent. Remove with caution.

Step 7 — Display Assembly



- Peel the two highlighted EMI shield tabs off the frame of the LCD.

Step 8



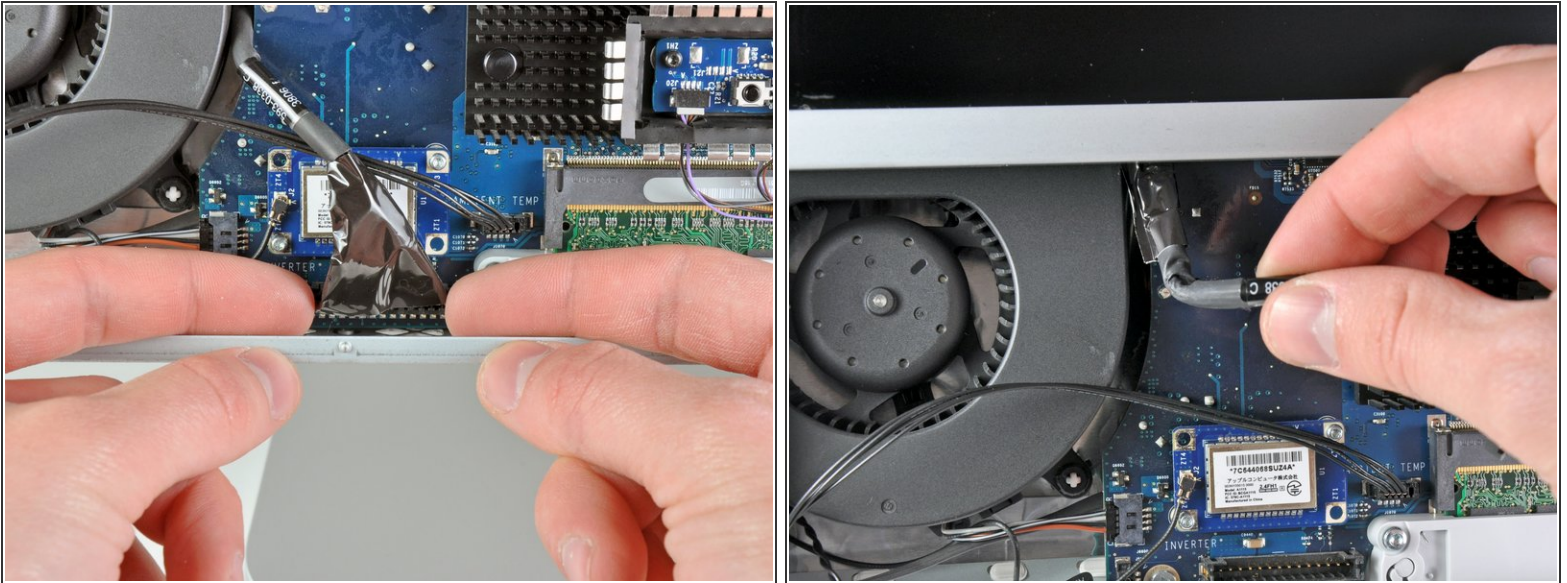
- Remove the two T6 Torx screws securing the display data cable to the logic board.

Step 9



- Pull the black plastic tab attached to the display data cable connector to disconnect it from the logic board.

Step 10



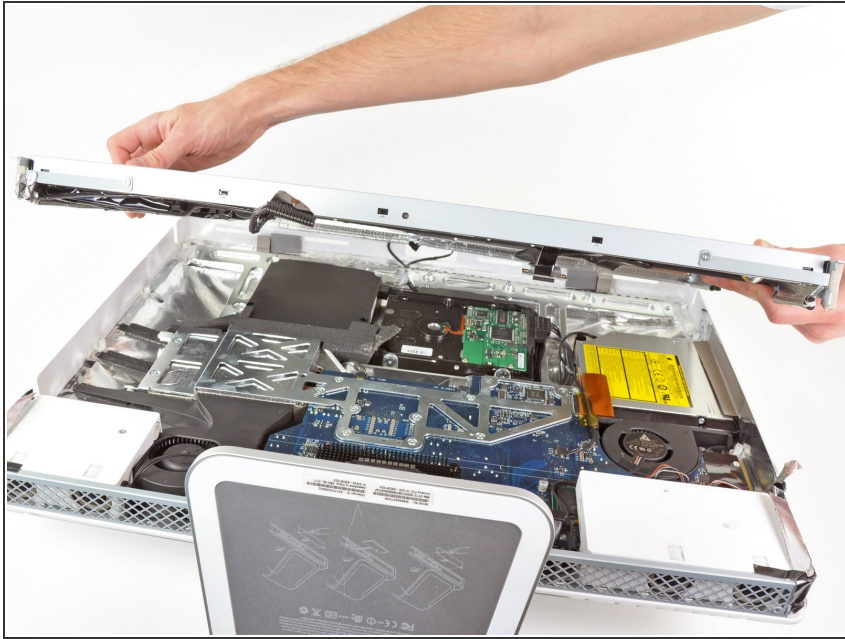
- Use your fingertips to pull both sides of the wide inverter cable connector out of its socket on the logic board.
- De-route the inverter cable from its location next to the CPU fan.

Step 11



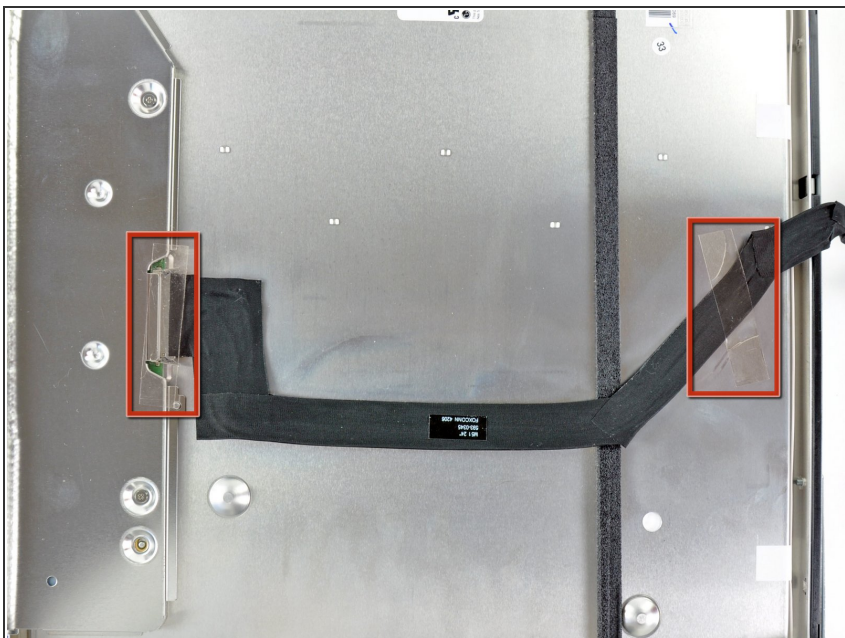
- ⚠ Before attempting this step, we recommend laying your iMac stand-side down on a table to avoid the display falling down.
- Remove the eight T8 Torx screws securing the display assembly to the rear case.
- ⓘ It is helpful to use a thin magnetized screwdriver to remove these screws.

Step 12



- Remove the display assembly from the iMac.

Step 13 — Display Data Cable



- Remove the two pieces of tape securing the display data cable to the back of the display.

Step 14



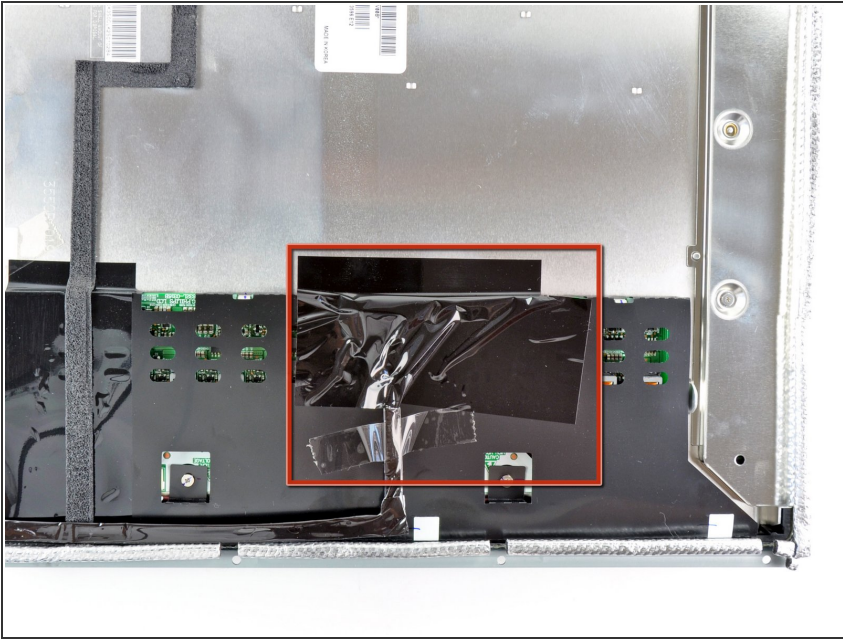
- Squeeze the two retaining arms together and pull the display data cable connector out of its socket.
- ⓘ Pull the cable parallel to the rear face of the LCD. Pulling upward may damage the cable and/or the LCD.

Step 15



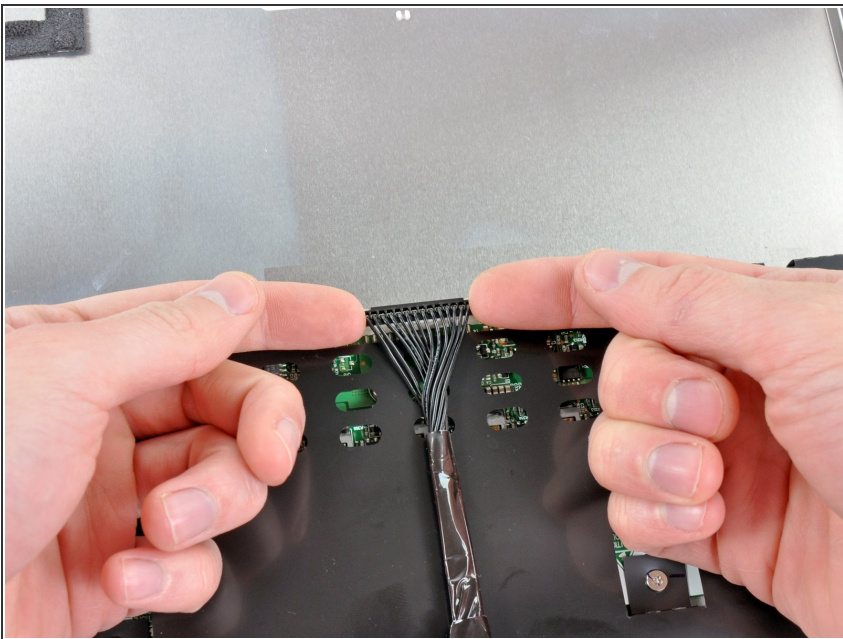
- Remove the display data cable.

Step 16 — Inverter Cable



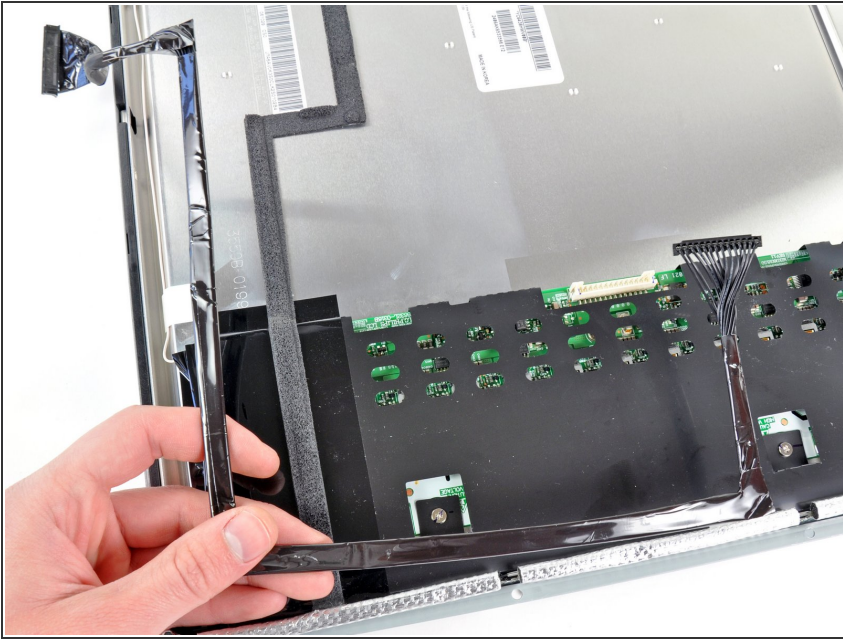
- Remove the large piece of tape covering the inverter cable connector and any tape securing the cable to the inverter board.

Step 17



- Lift the inverter cable connector straight up from its socket on the inverter board.

Step 18



- Remove the inverter cable from the LCD.

Step 19 — Inverter Board



- Peel the strip of foam tape off the inverter board.

Step 20



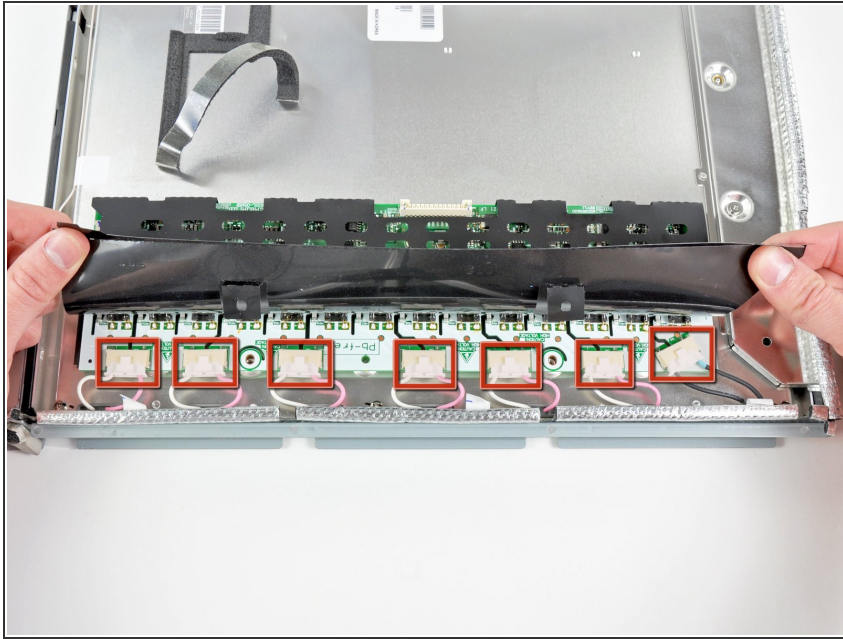
- Remove the large piece of black tape covering the side of the inverter board.

Step 21



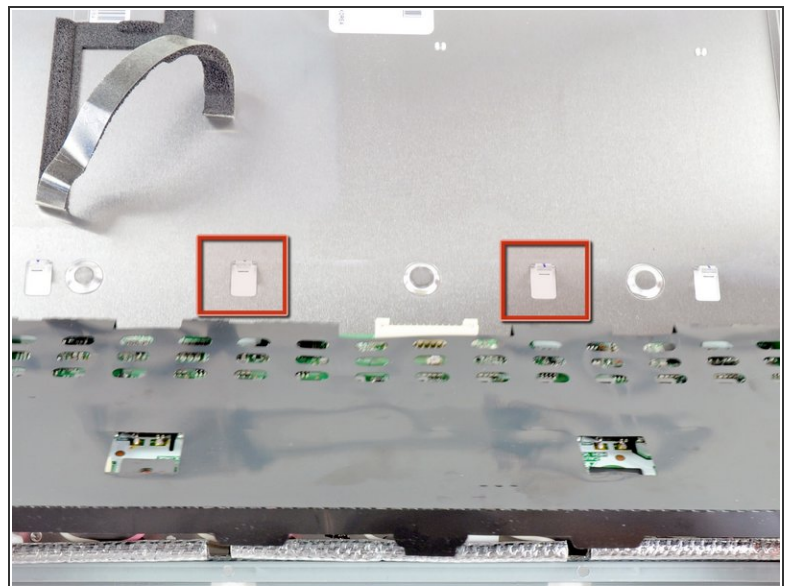
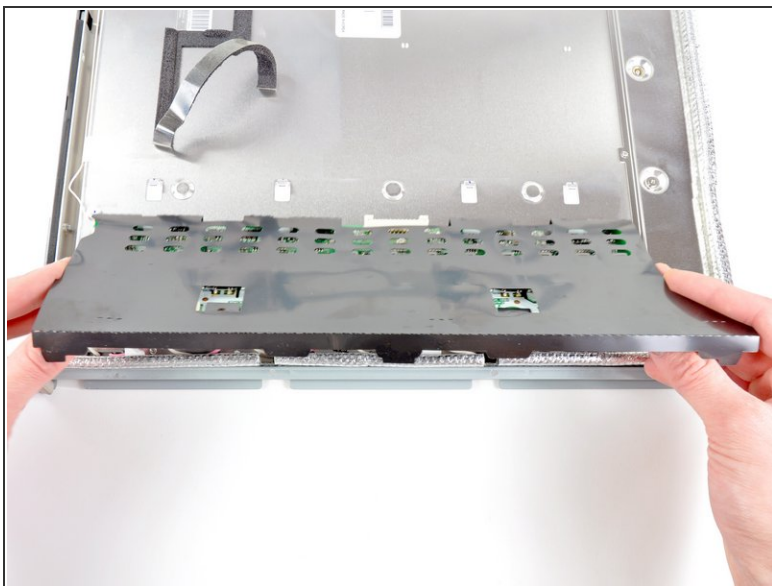
- Remove the two Phillips screws securing the inverter board to the back of the LCD.

Step 22



- Carefully lift the black cover off the inverter board from the side closest to the edge of the LCD.
- Disconnect the seven locking connectors from the side of the inverter board.

Step 23



- Lift the inverter board off the LCD.
- ☑ When reinstalling the inverter board, be sure to push the board under the two tabs nearest the center of the LCD before lowering it down into place.

Step 24 — LCD



- LCD remains.

To reassemble your device, follow these instructions in reverse order.