



# XtremeMac Luna Radio Jack Replacement

How to install a new radio jack for your XtremeMac Luna.

Written By: David Ellison



---

## INTRODUCTION

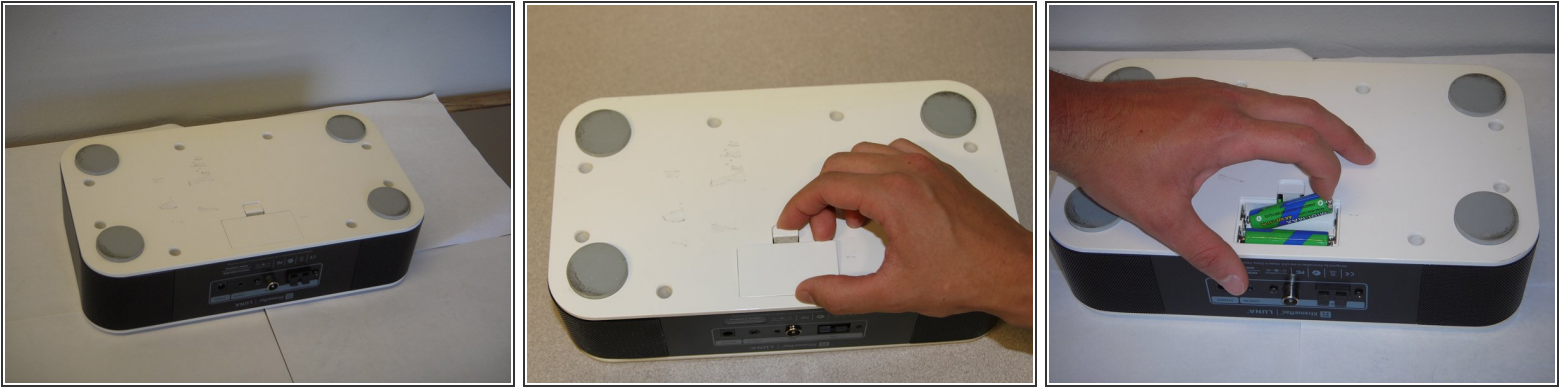
If your Luna is no longer picking up radio signals, it may be due to a faulty radio jack. Replace it in a few simple steps.

---

### TOOLS:

- [Phillips #1 Screwdriver](#) (1)
  - [Soldering Workstation](#) (1)
  - [iFixit Opening Tools](#) (1)
-

## Step 1 — Bottom Panel



- Flip the device over so that the batteries are closest to you.
- Remove the battery lid by pressing the battery cover's tab and pulling it away from the device.
- Push the battery against the spring and lift it out of the casing.
- Repeat with the other battery.

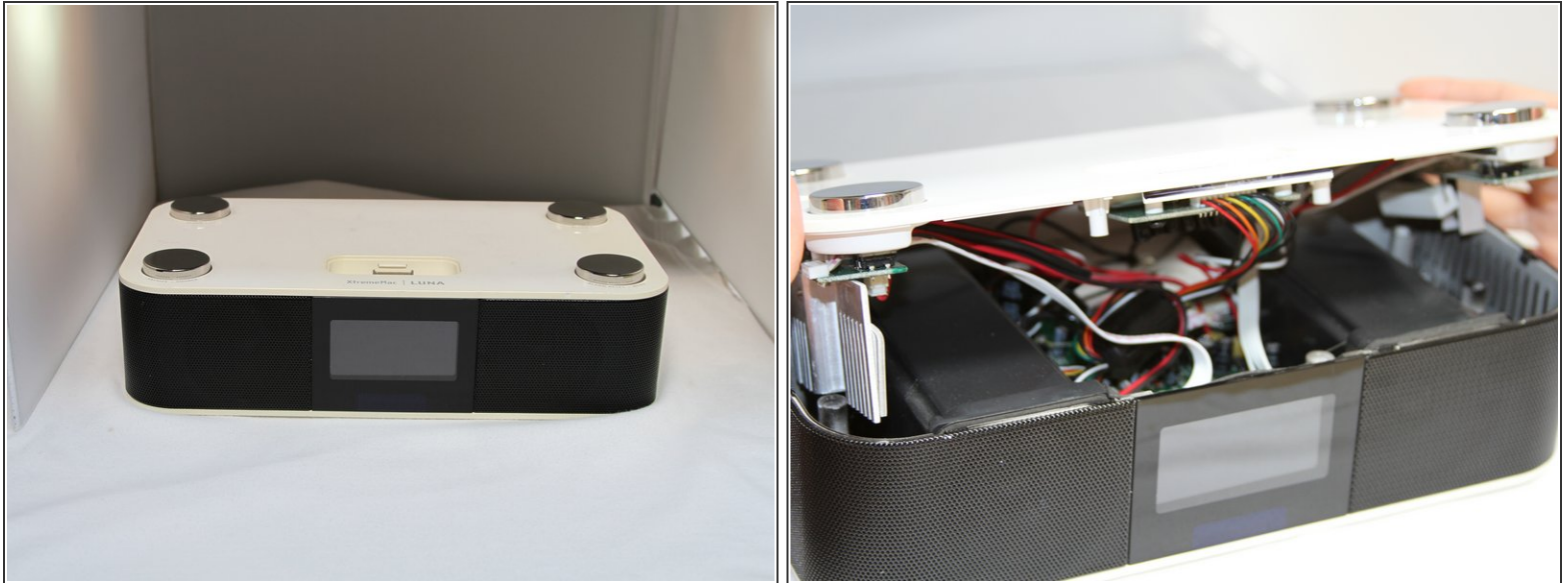
## Step 2



- Unscrew all eight 12mm Phillips head screws with a Philips #1 screwdriver.
- ⓘ The iFixit 26 bit screwdriver kit will not reach the screws. Make sure to use a screwdriver that is thin enough to not get stuck in the screw holes.

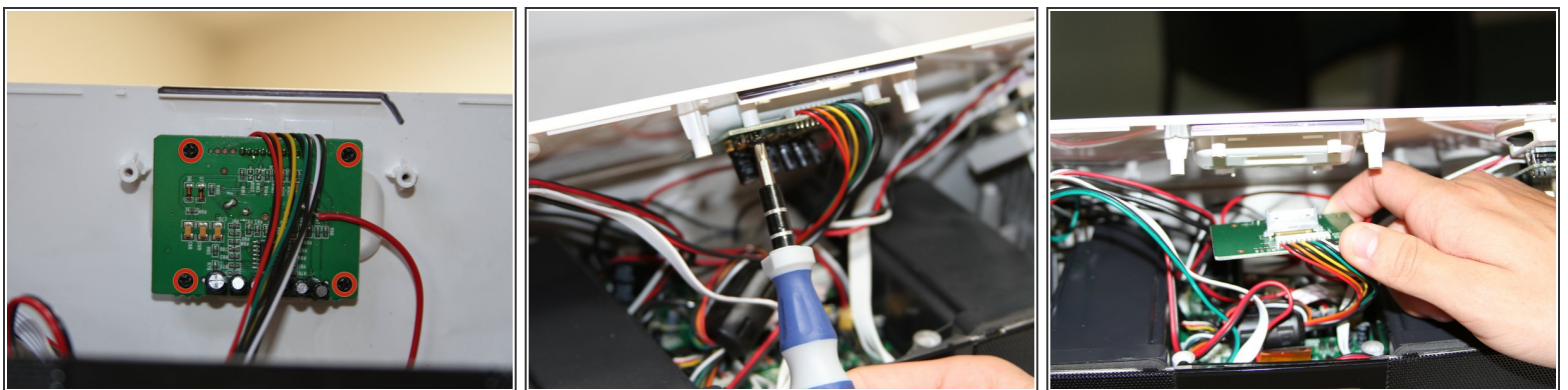


### Step 3



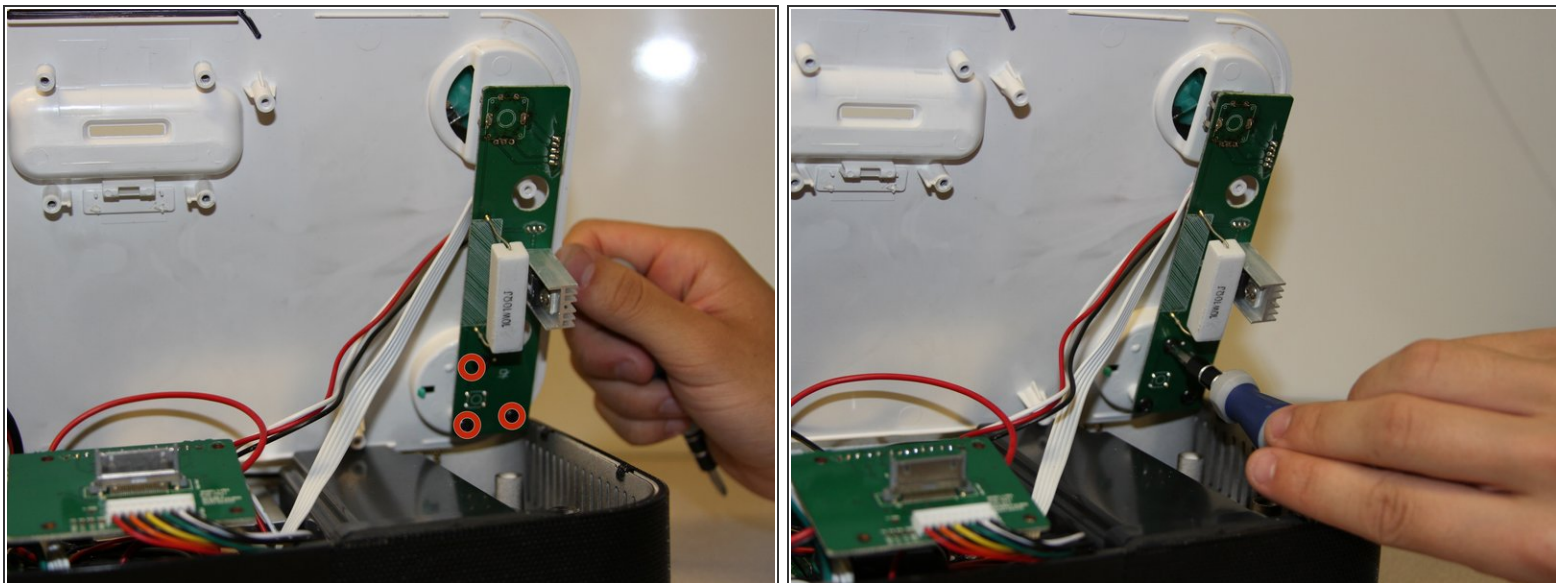
- Flip the Luna back over so that the buttons are facing upward and the LCD screen is facing you.
- Gently tilt the lid back 45 degrees so that the inside is exposed.
- ⓘ Be mindful of the wires inside of the Luna. It is easy to break a connection if a wire gets caught.

### Step 4 — Dock Circuit Board



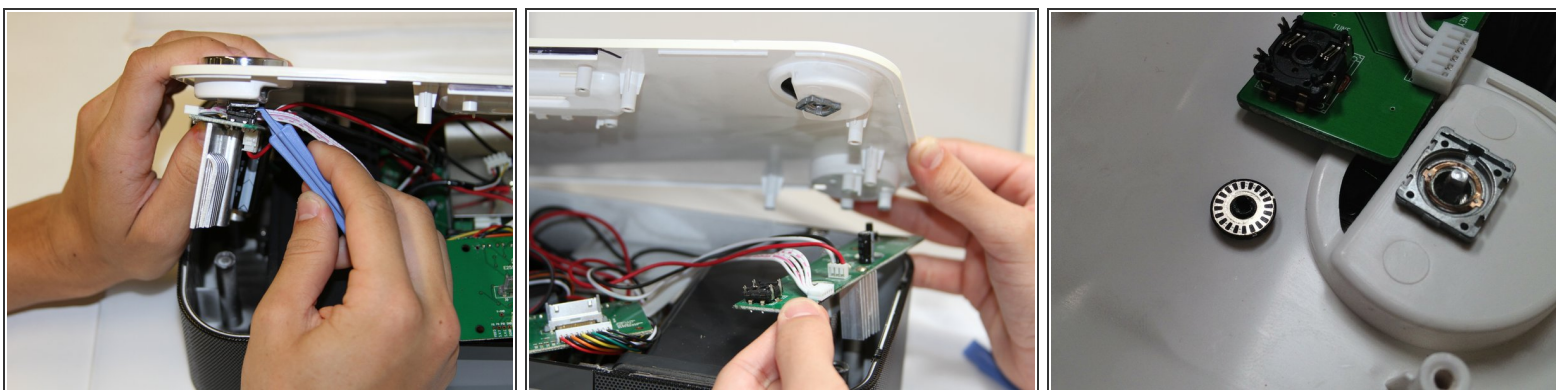
- Unscrew the four black 7mm screws with the Phillips #1 screw driver that hold the middle circuit board to the top case.

## Step 5 — Button Circuit Boards



- Unscrew the three 7 mm black screws using the Philips #1 screwdriver on the back end of the left and right circuit board.
- ⓘ Removing the right circuit board first will make it easier to unscrew the left because the heat-sinks on the left circuit board can get in the way of the screwdriver.

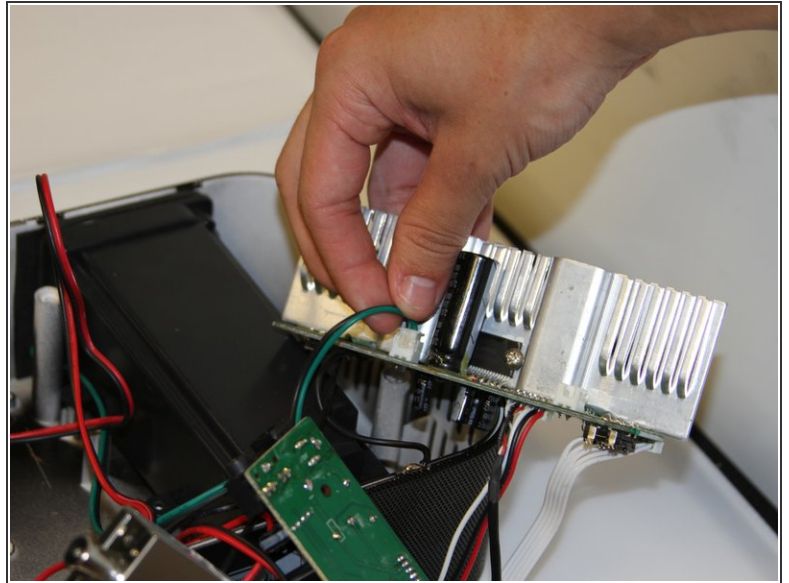
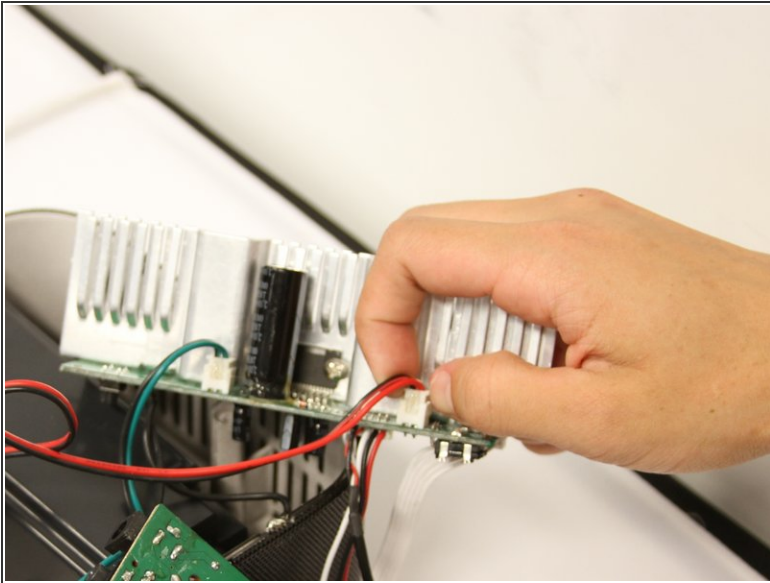
## Step 6



- Use a plastic opening tool to pry the black connections away from the top casing.
- ⓘ Be attentive when you separate the circuit boards from the top, as there is a loose wheel inside.

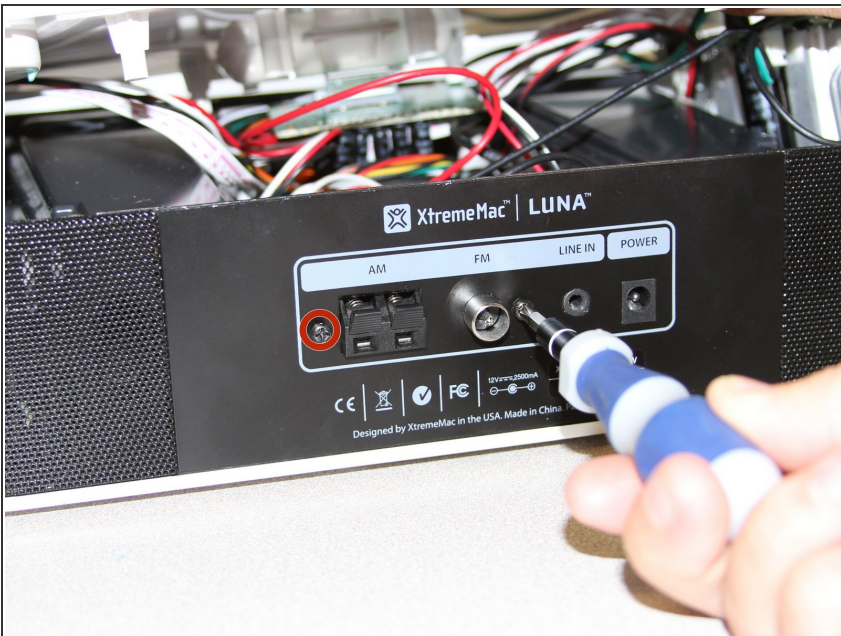


## Step 7



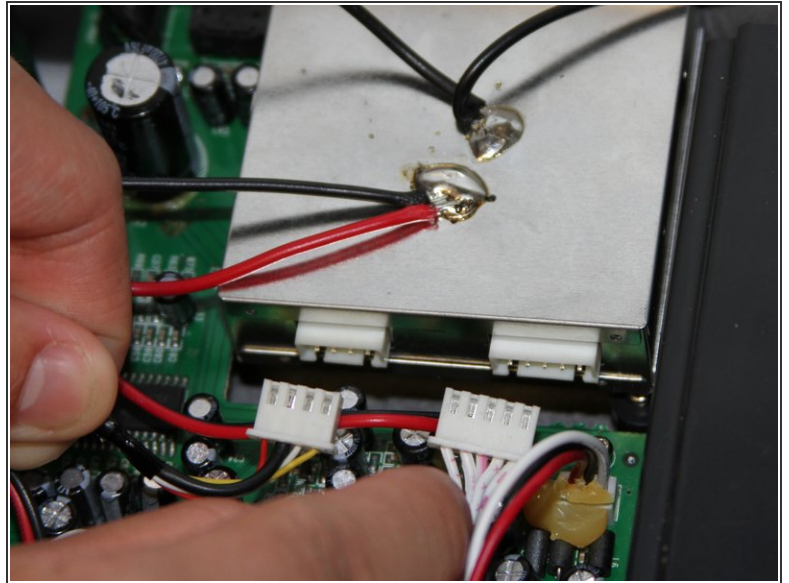
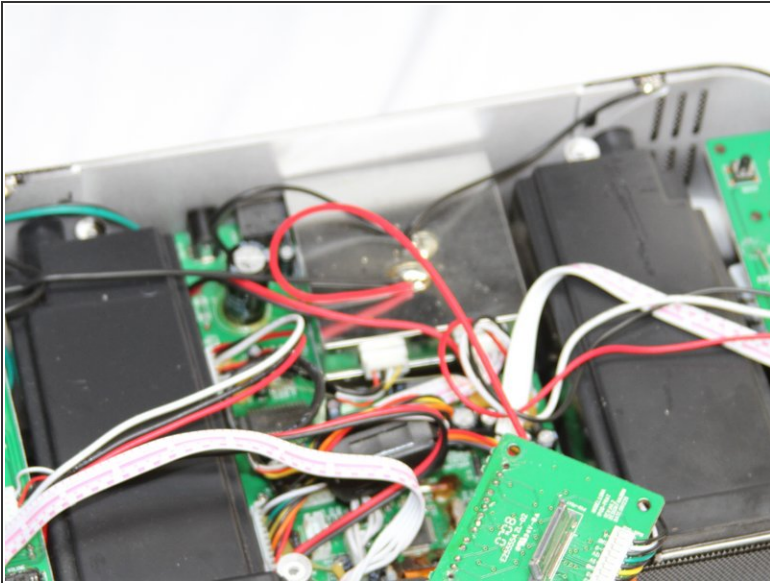
- Turn the circuit boards over. Remove the two connections on the left side by pulling on the tabs.
- ⓘ The glue that holds the connection together will come off when you pull. Pull on the tab with enough force to break the glue without damaging the wires.

## Step 8 — Radio Jack



- Remove the two 12mm Phillips head screws from the back of the device using a Phillips #1 screwdriver.

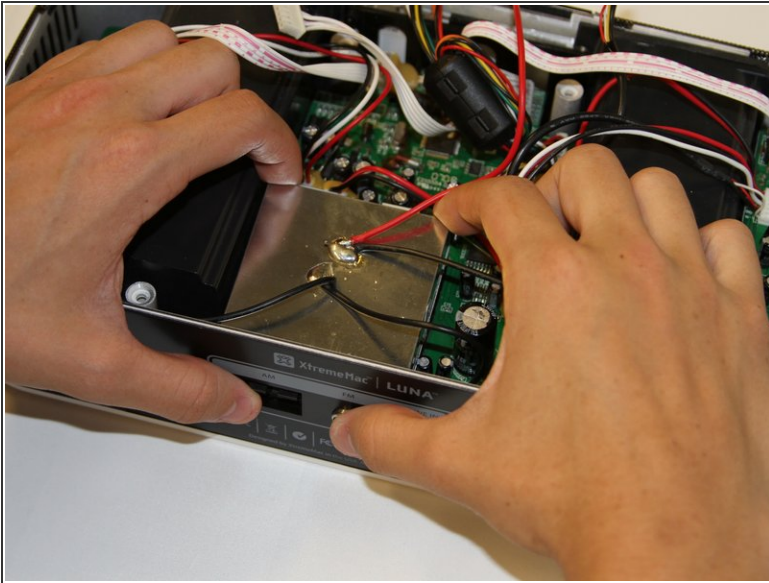
## Step 9



- Turn the Luna so that the display faces forward.
- Pull the two white tabs to remove the cables from the front of the radio jack.

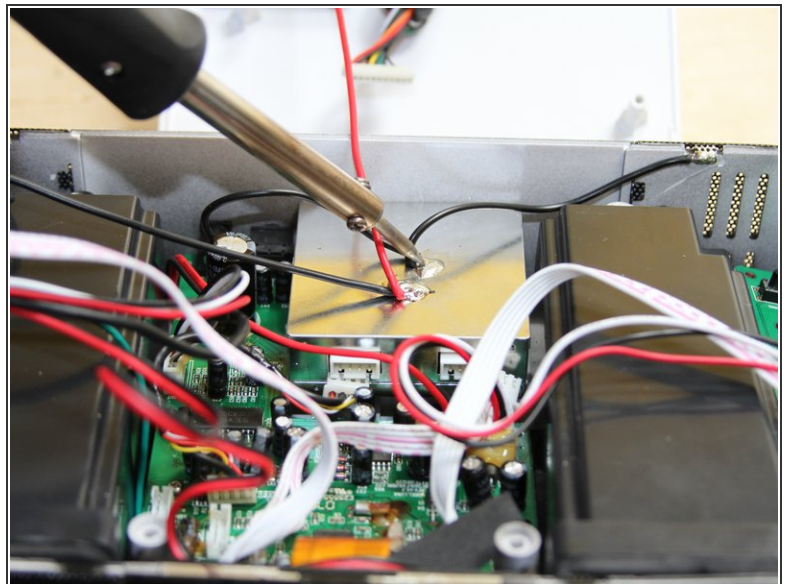
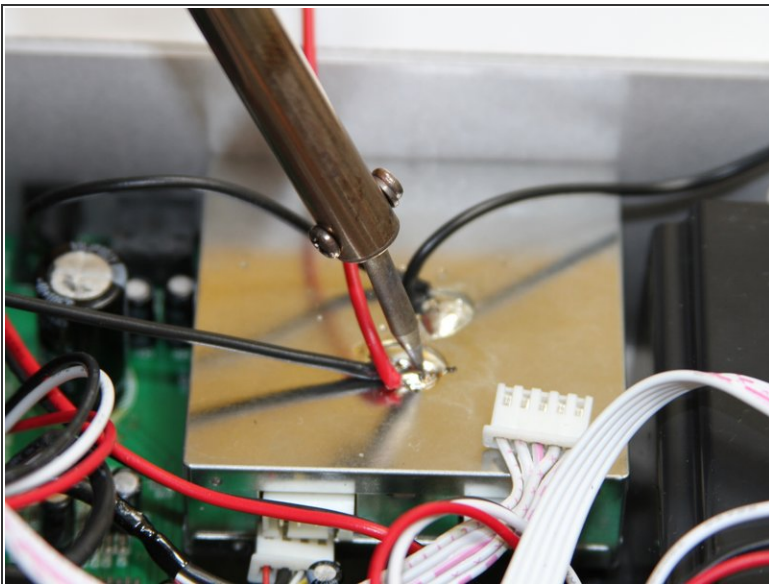


## Step 10



- Push the connections through the back casing and lift the radio jack up and out.
- ⓘ Reinserting the square AM switches can be tricky. Make sure they are aligned properly when you are reassembling the device.

## Step 11



- Desolder the positive connection (red) and the negative connection (black) on top of the radio jack to completely remove it.



To reassemble your device, follow these instructions in reverse order.