



# Toy Truck Teardown

Written By: Kemar Lawrence



 **TOOLS:**

- [Mako Driver Kit - 64 Precision Bits \(1\)](#)
- [Flush Wire Cutters \(1\)](#)

## Step 1 — Toy Truck Teardown



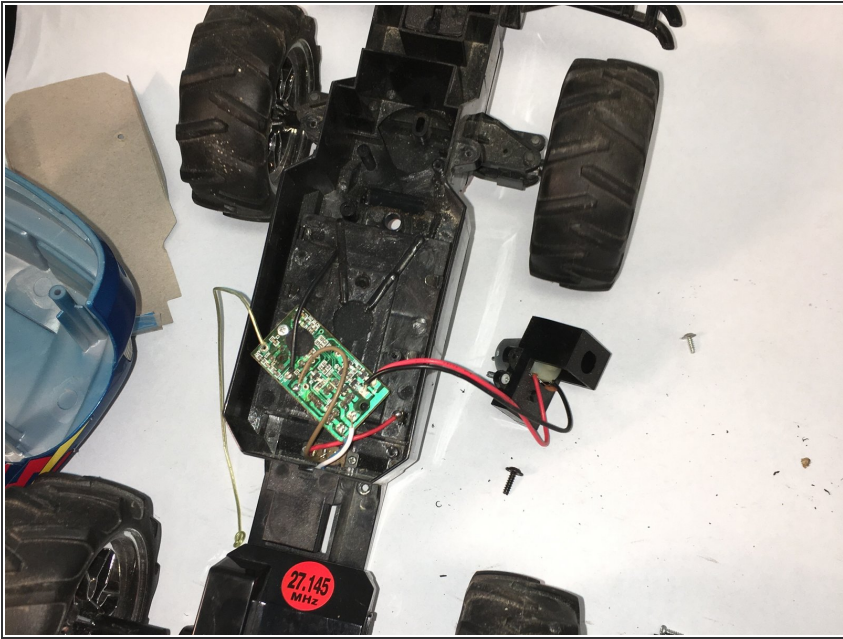
- This is how the toy truck look before starting the takedown process

## Step 2



- Using a big phillips screwdriver unscrew the housing that holds the wheels

### Step 3



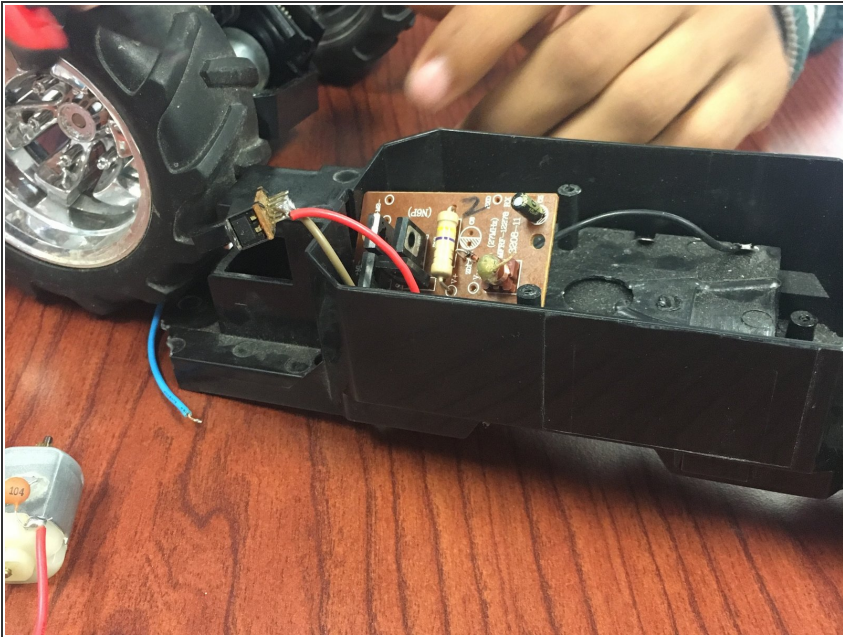
- Use a small phillips screw driver to unscrew the circuit board

### Step 4



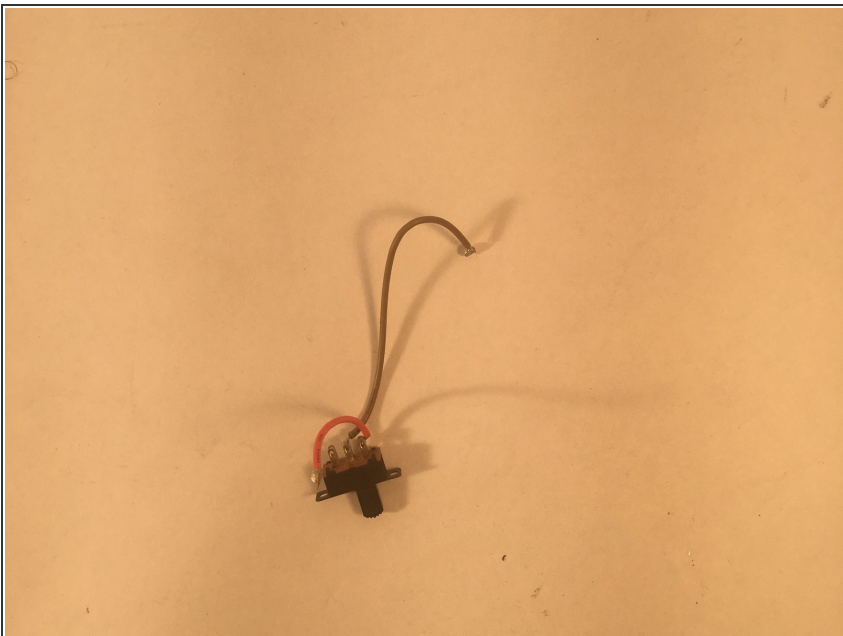
- Detach all the parts, including the wheels and truck top.

## Step 5



- Once you detach the car top you remove the case that is covering the base of the car

## Step 6



- Use wire snips to cut the batteries from the circuit board