



Toshiba Satellite Radius P55W-B5220 Battery Replacement

This guide will explain how to remove the battery from the Toshiba Satellite Radius P55W-B5220.

Written By: Devin Boski



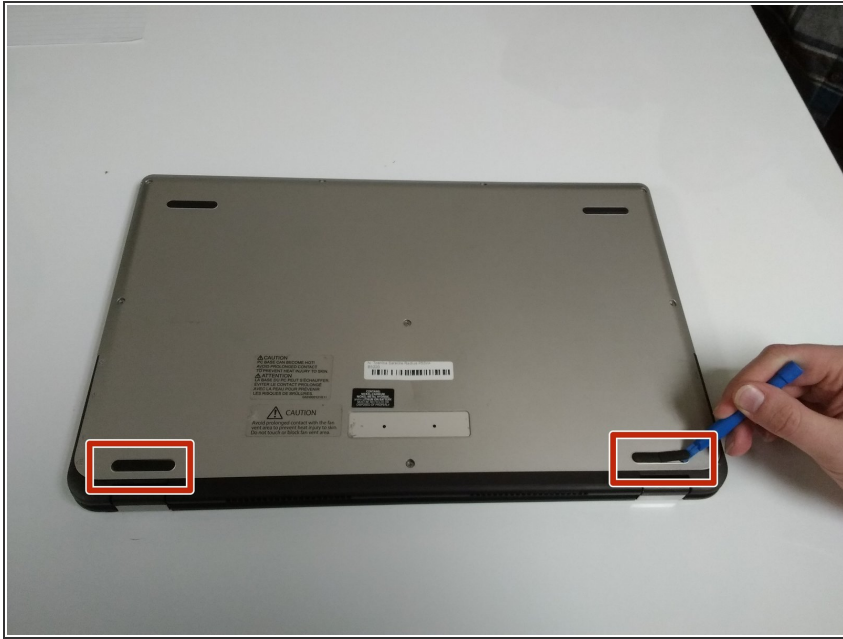
INTRODUCTION

The battery is the power source for your laptop. If defective, this guide will instruct you on how to remove and replace your battery.

TOOLS:

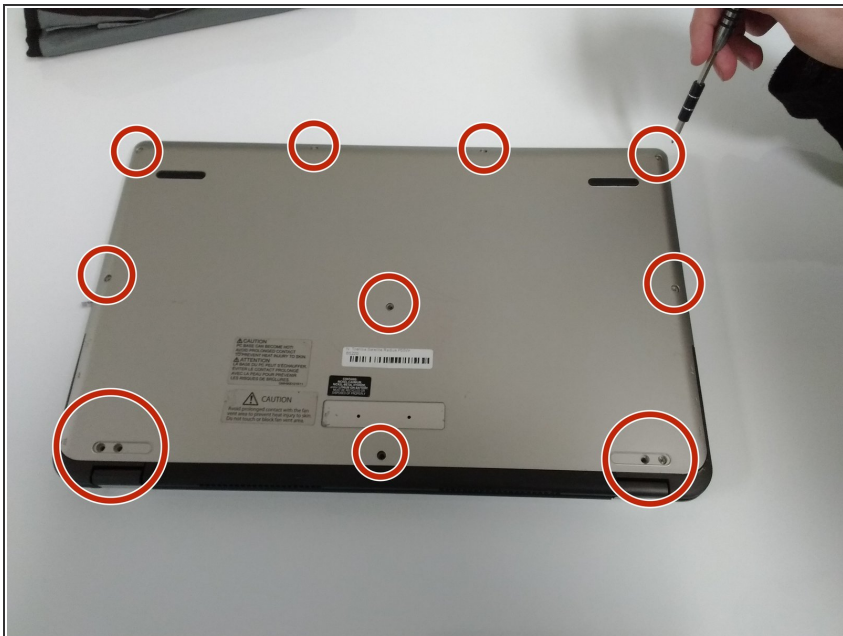
- [Phillips #0 Screwdriver](#) (1)
 - [iFixit Opening Tools](#) (1)
-

Step 1 — Back Cover



- ⓘ Turn off the laptop before starting.
- Remove the two rubber feet closest to the hinge with a plastic opening tool.

Step 2



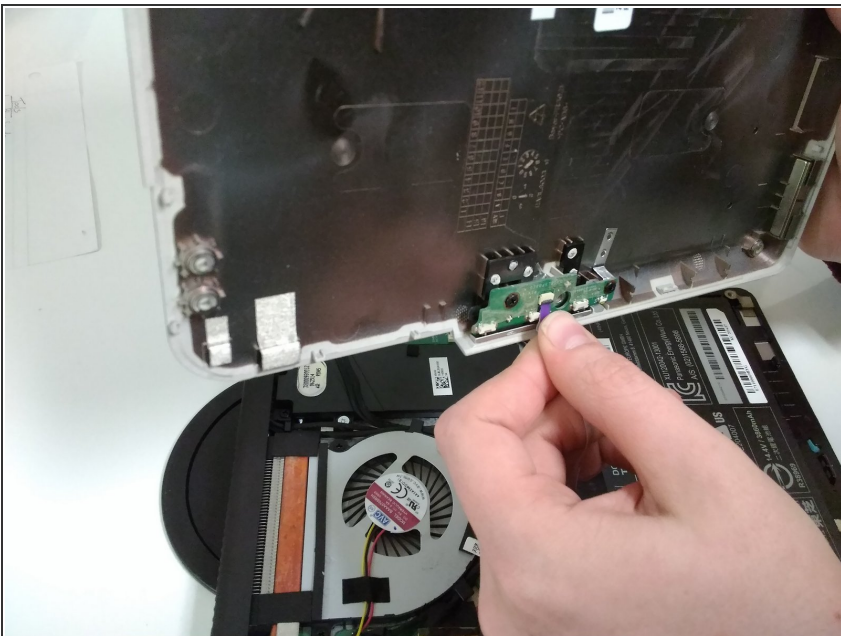
- Remove the twelve M2x4mm PH0 Philips head screws.

Step 3



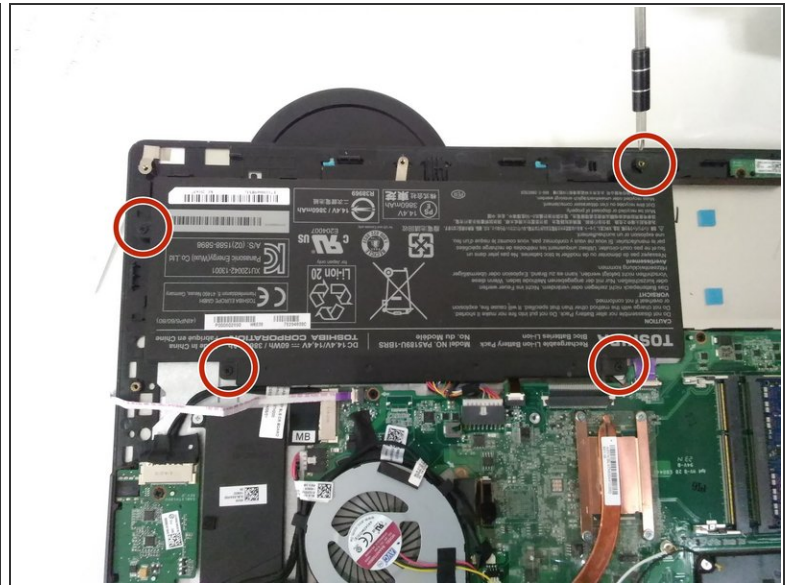
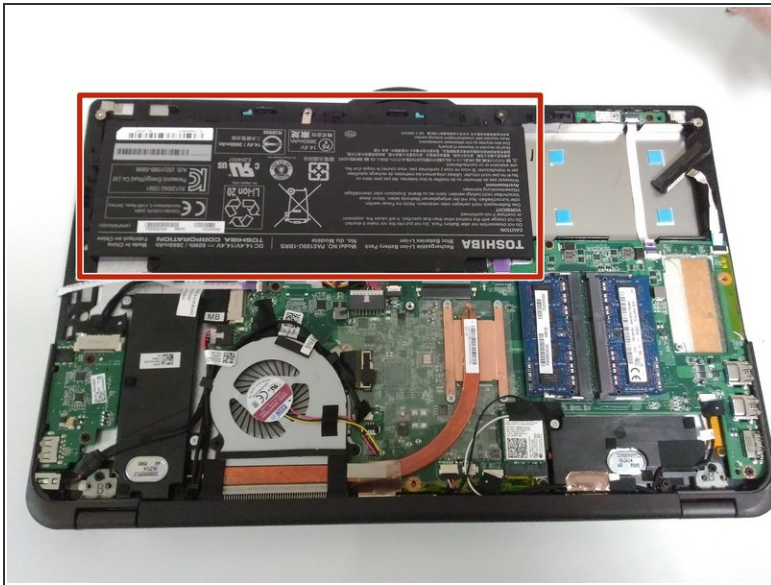
- Loosen the back cover with a plastic opening tool.
- ⓘ The least damaging way to pry the cover is to start from a corner and run the spudger along the edge.
- ⚠ Do not crack or bend the cover.

Step 4



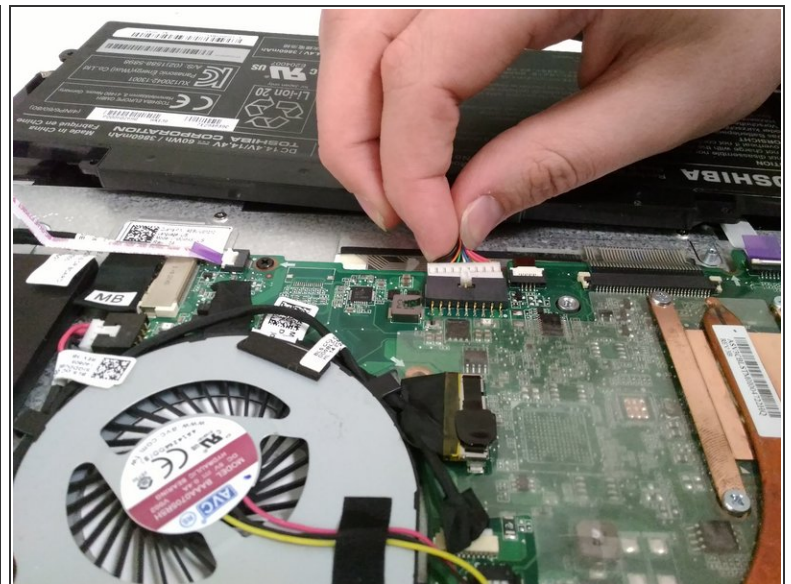
- Carefully lift open the cover.
- Remove the attached purple ribbon cable underneath the cover.
- ⚠ Do not rip the ribbon cable.

Step 5 — Battery



- Remove the four M2x2.5mm P0 Philips head screws.

Step 6



- Pinch the attached cables and carefully pull away to remove the battery.

To reassemble your device, follow these instructions in reverse order.

This document was generated on 2019-09-26 01:37:30 PM (MST).