



Thrustmaster T Flight Hotas 4 PlayStation Action Buttons Replacement

The goal of this guide is to show how to replace the PlayStation action buttons.

Written By: Aaron Banaga



INTRODUCTION

The PlayStation Action Buttons are the x, square, circle, and triangle buttons. They are responsible for camera adjustments and other various actions.

TOOLS:

- [JIS #1](#) (1)
-

Step 1 — J1 Screws on Throttle



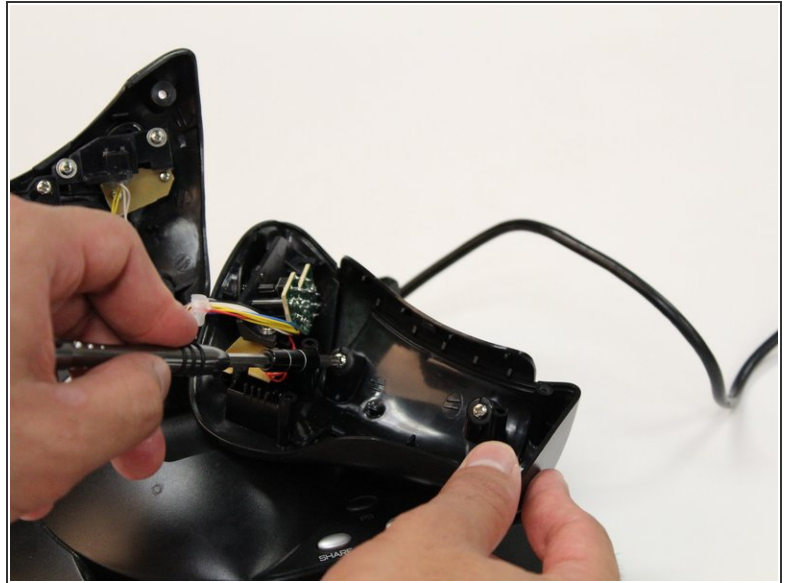
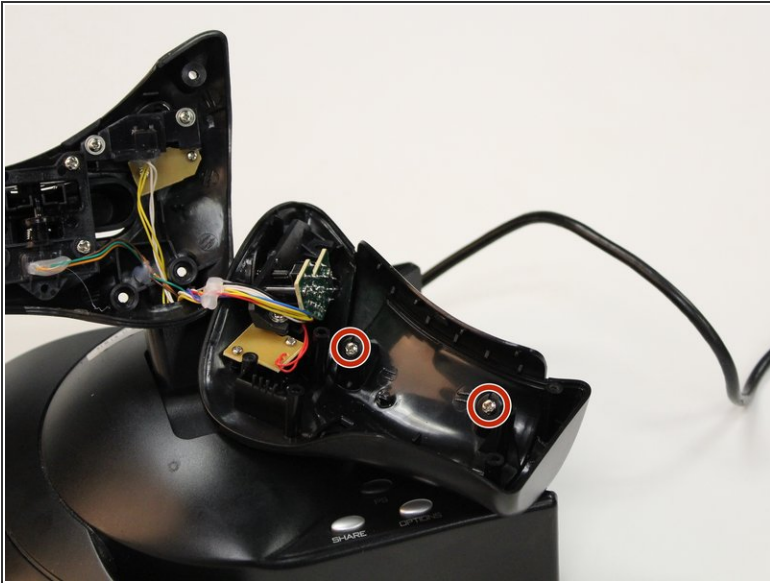
- ⓘ Be sure to disconnect the controller from the power source before disassembling.
- Remove the five 15 mm J1 JIS head screws from the front of the throttle.

Step 2 — Throttle Panel



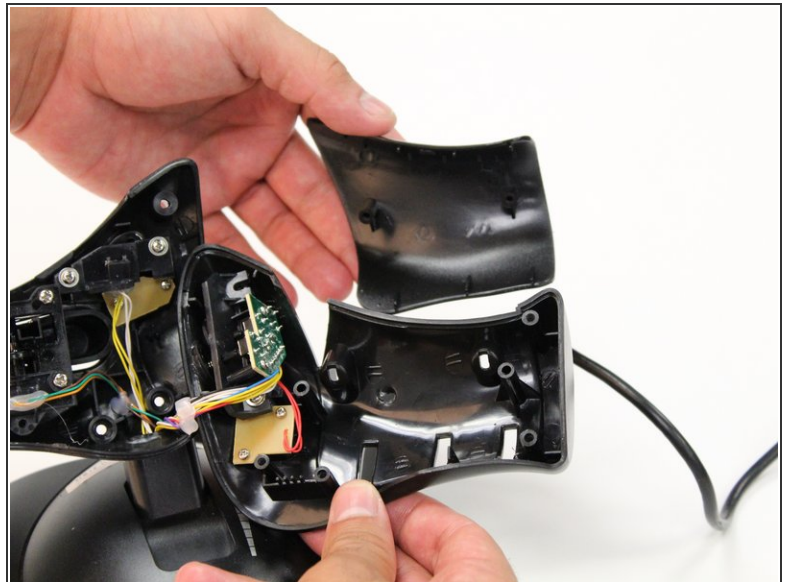
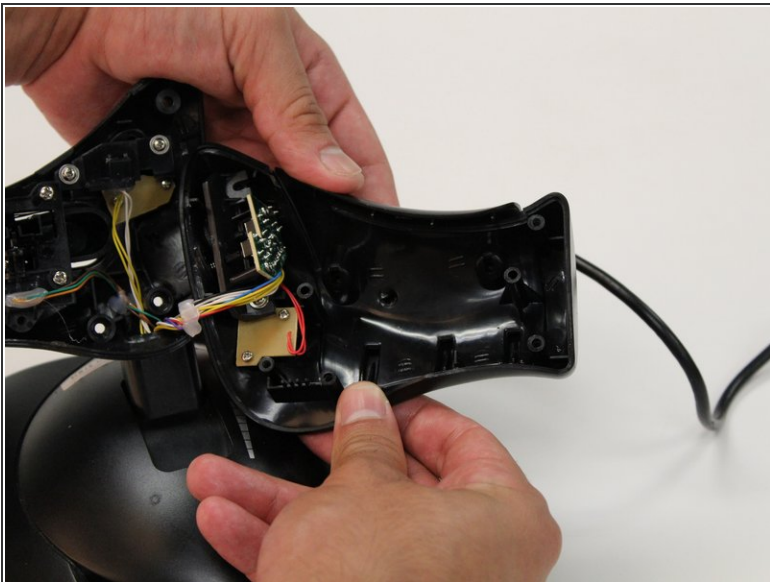
- ⓘ Be sure to disconnect the controller from the power source before disassembling.
- Using your hands, pull away the panel from the throttle.

Step 3 — PlayStation Action Buttons



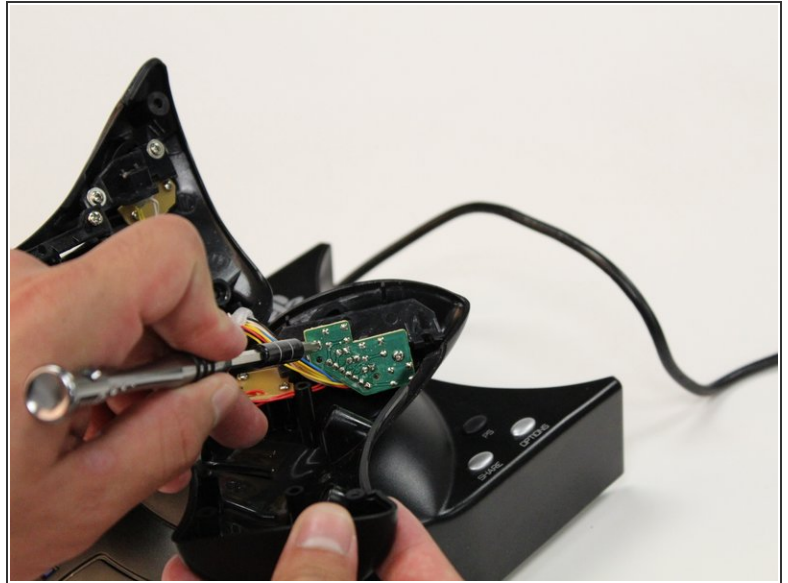
- Remove the two 8 mm J1 JIS head screws.

Step 4



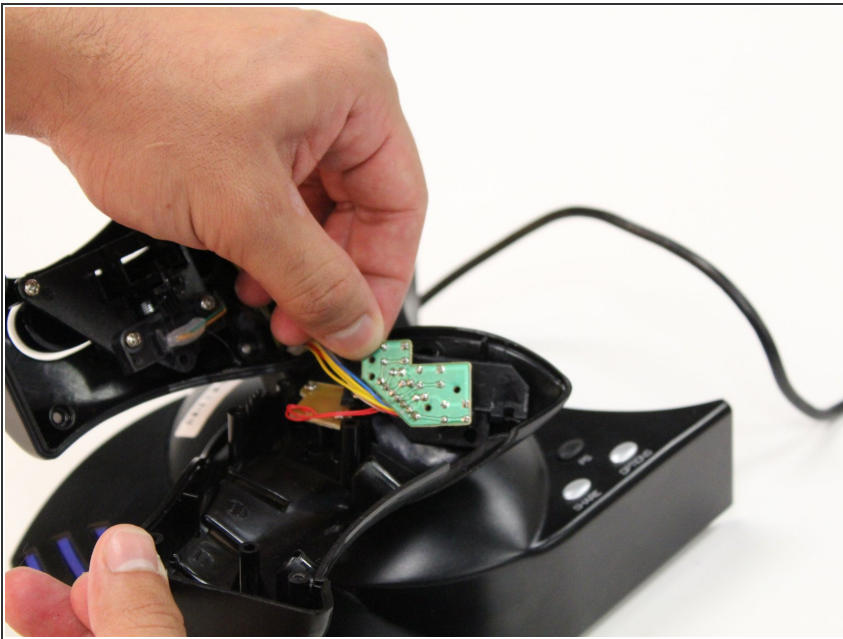
- Remove exterior panel from the throttle by using your hands to gently pull the panel away.

Step 5



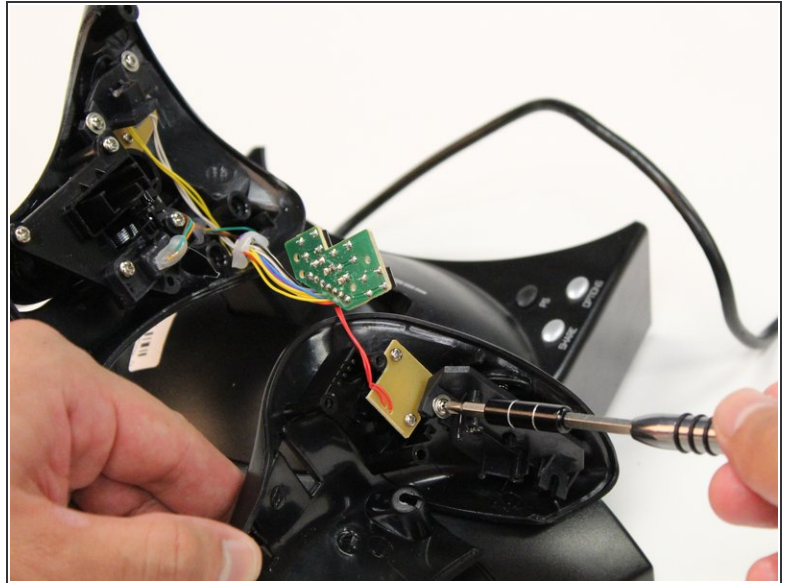
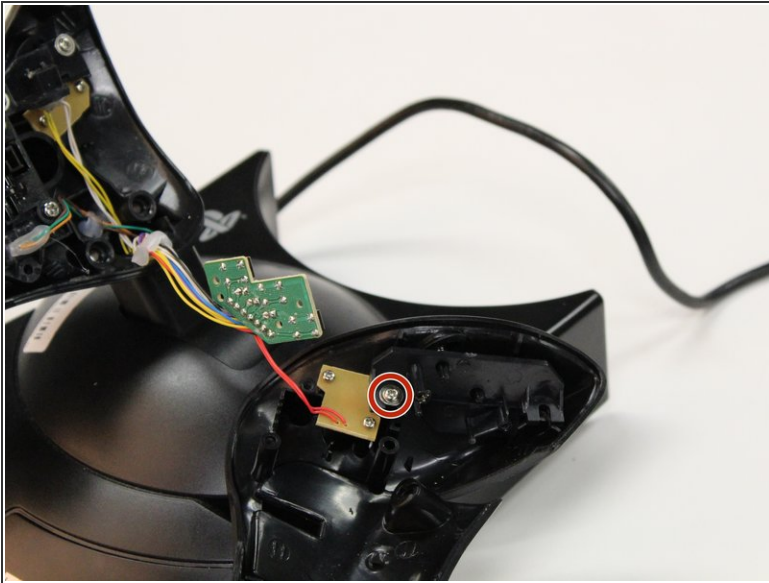
- Remove the two 6 mm J1 JIS head screws from the circuit board.

Step 6



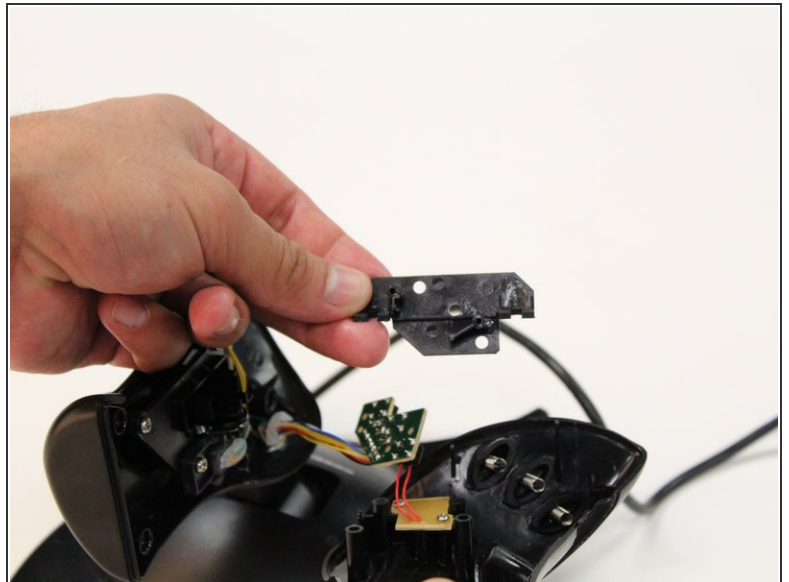
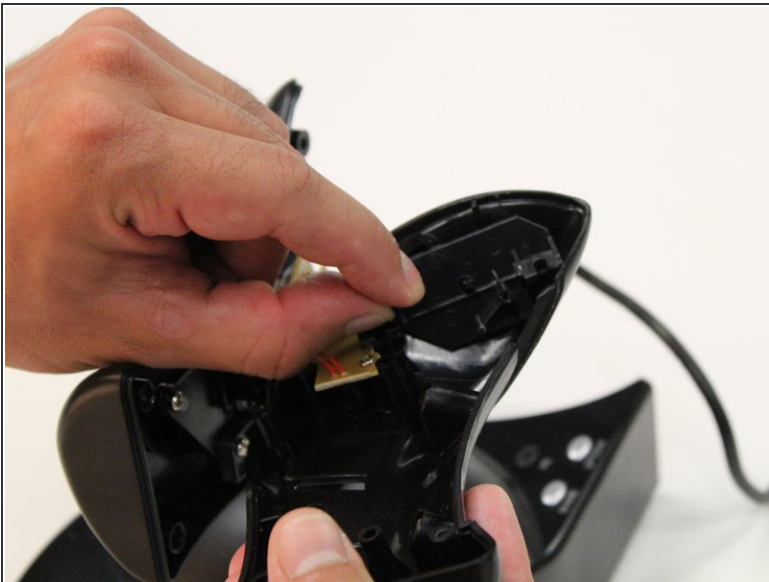
- Carefully remove the circuit board.

Step 7



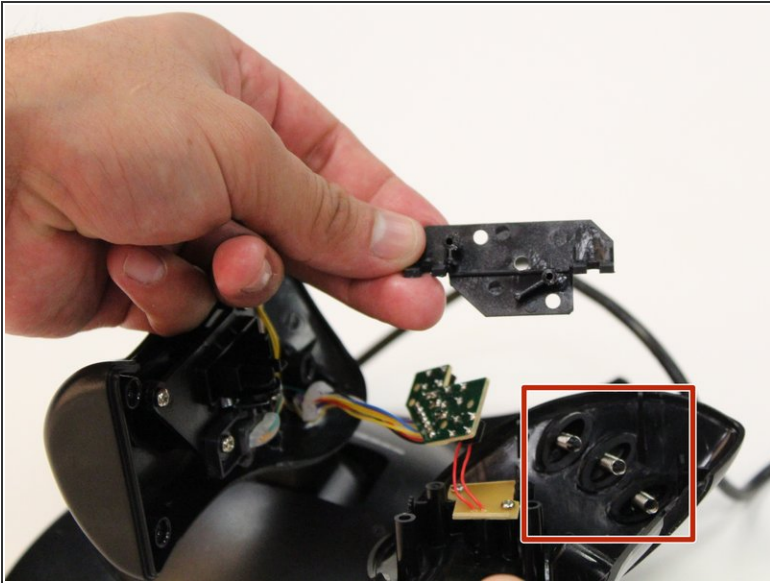
- Remove the 6 mm J1 JIS head screw that is attached to the black plastic cover.

Step 8



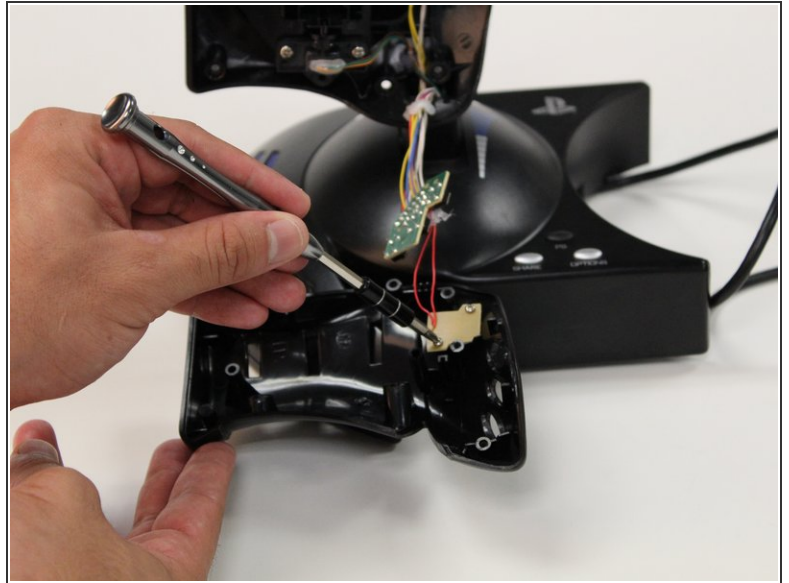
- Remove black plastic cover.

Step 9



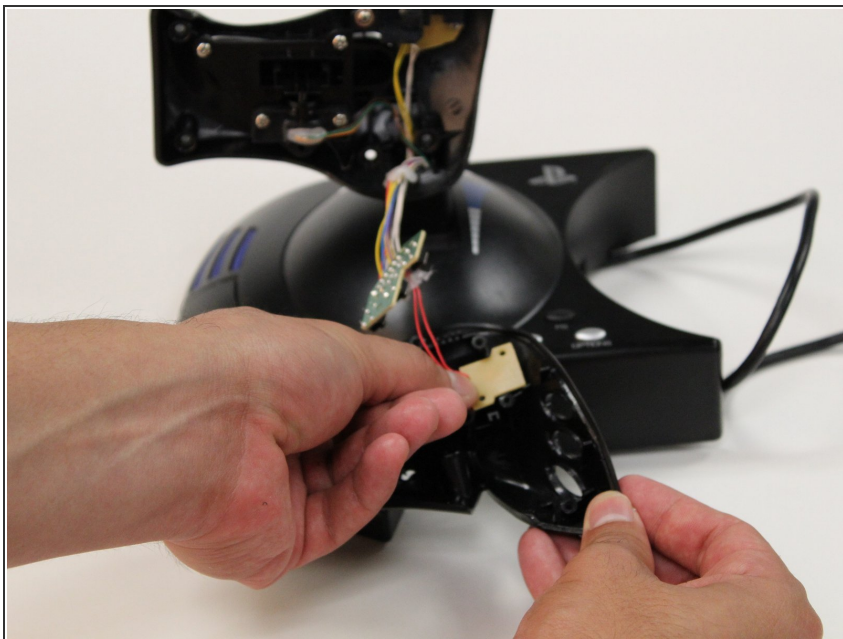
- Once the black plastic cover is removed, push the buttons inward from the outside of the device.
- ⓘ Be aware of the springs. They are small and easy to lose.
- ☞ This step only replaces the x, square, and circle buttons.

Step 10



- Remove the two 6 mm J1 JIS head screws that are attached to the tan plastic cover.
- ⓘ Removal of the screws will detach the exterior panel from the device.

Step 11



- Carefully remove tan plastic cover.

Step 12



- Once the black panel is disconnected, push the triangle button inward from the outside of the exterior panel.

To reassemble your device, follow these instructions in reverse order.