



# Siemens A56 LCD Display Replacement

A guide for removing a malfunctioning LCD screen for the Siemens A56.

Written By: Joseph Casey



---

## INTRODUCTION

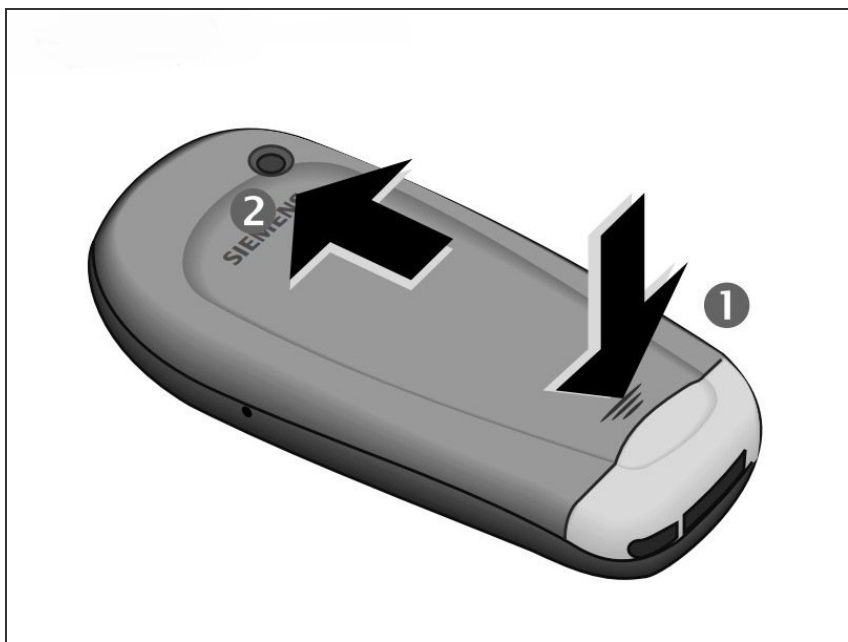
After testing other solutions for a malfunctioning screen, replacement of the LCD screen may be necessary. This guide will show the user how to open the Siemens A56 cell phone and remove the LCD screen. If a pixel is not displaying or the screen in general is not displaying, this guide may be a solution.

---


### TOOLS:

- [Spudger](#) (1)
  - [iFixit Opening Tools](#) (1)
  - [T5 Torx Screwdriver](#) (1)
-

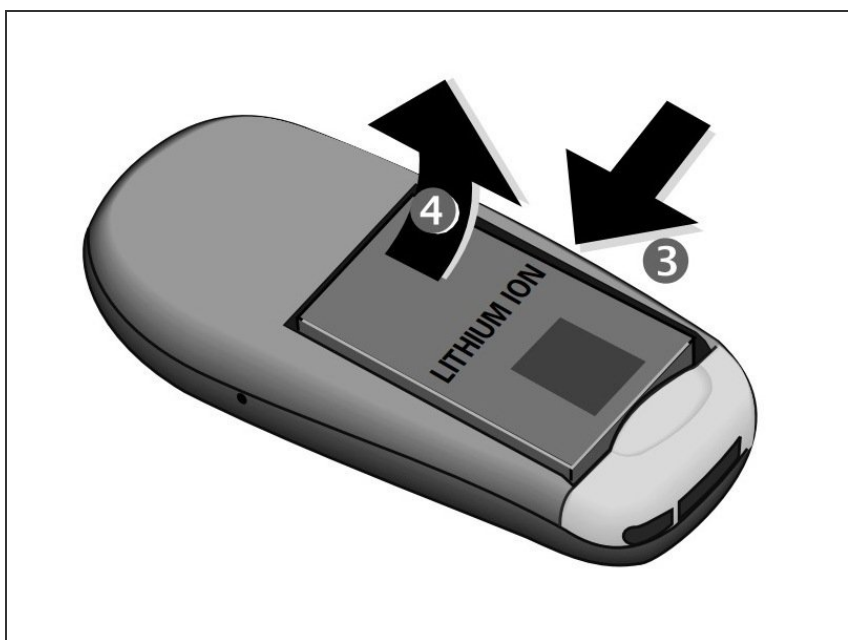
## Step 1 — Battery




- Press down on the grooved area firmly in the direction of arrow #1.
- While maintaining the downwards pressure, push the back cover in the direction of arrow #2 until the back cover slides off.


 Photos taken from:  
<http://theinformr.com/uploads/manuals/si...>


## Step 2



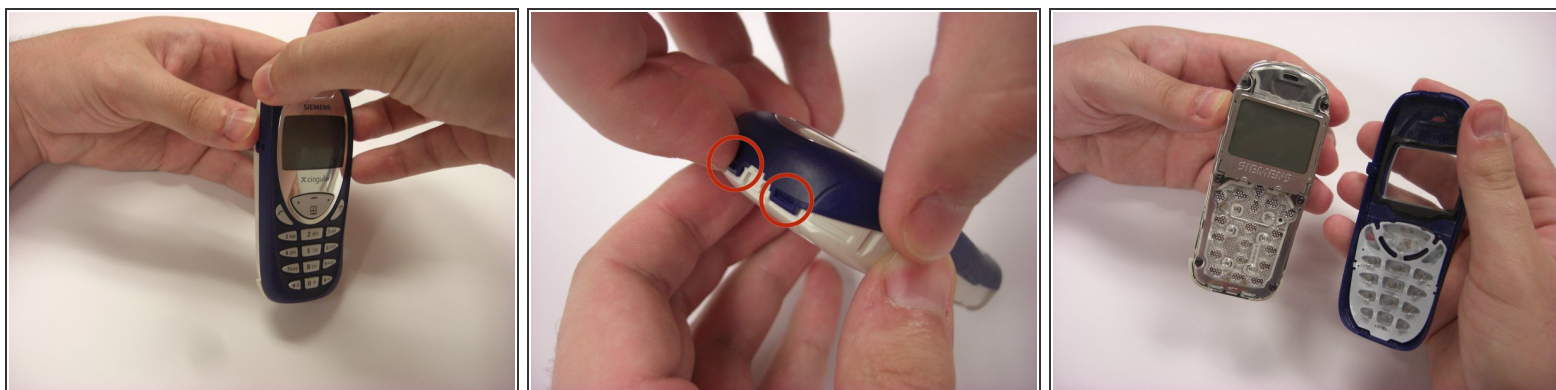
 Turn off the phone before removing the battery to avoid damage.

- Press the latch on the battery in the direction of arrow #3.
- Lift battery at the cutout on the side of the phone, then tilt upwards and remove.

 It may be necessary to use the tip of a fingernail or a plastic lifting tool to remove the battery.

 Photos taken from:  
<http://theinformr.com/uploads/manuals/si...>

### Step 3 — Front Plate



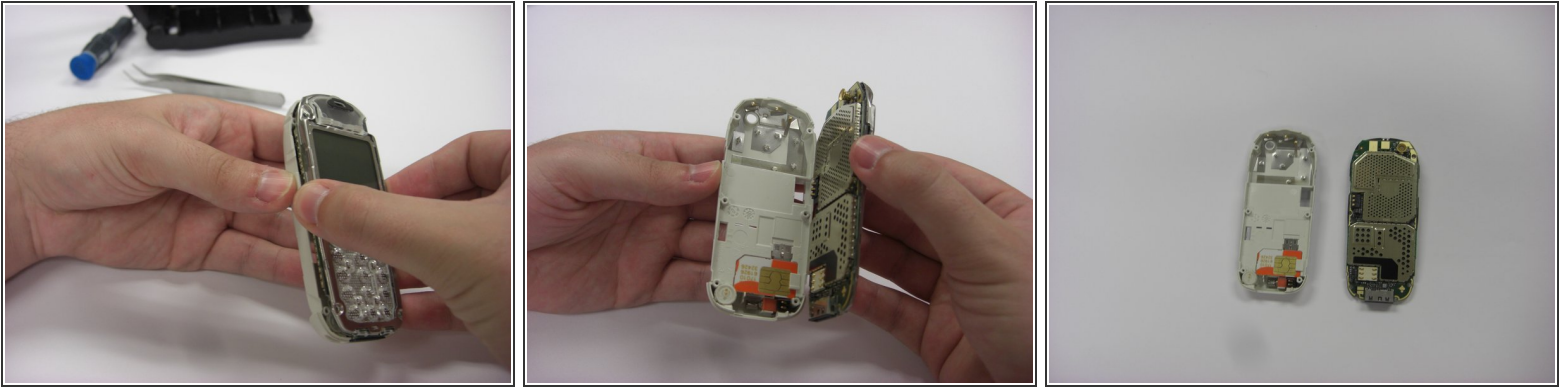
- Firmly grasp the white casing of the phone with one hand and the blue cover with the other hand as seen in the first picture.
- Pull up on the two plastic clips at the top of the phone.
- While the clips are pulled up, pull the blue cover away from the white casing to remove it.

### Step 4 — Back Plastic Cover




- Along the side of the metal frame of the phone, locate the six screws.
  - Using a T5 screwdriver bit, unscrew the six 1/4 inch screws and store them in a safe place.
- ⚠** The screws are very small and can strip easily, so proper care is required when removing and storing the screws.

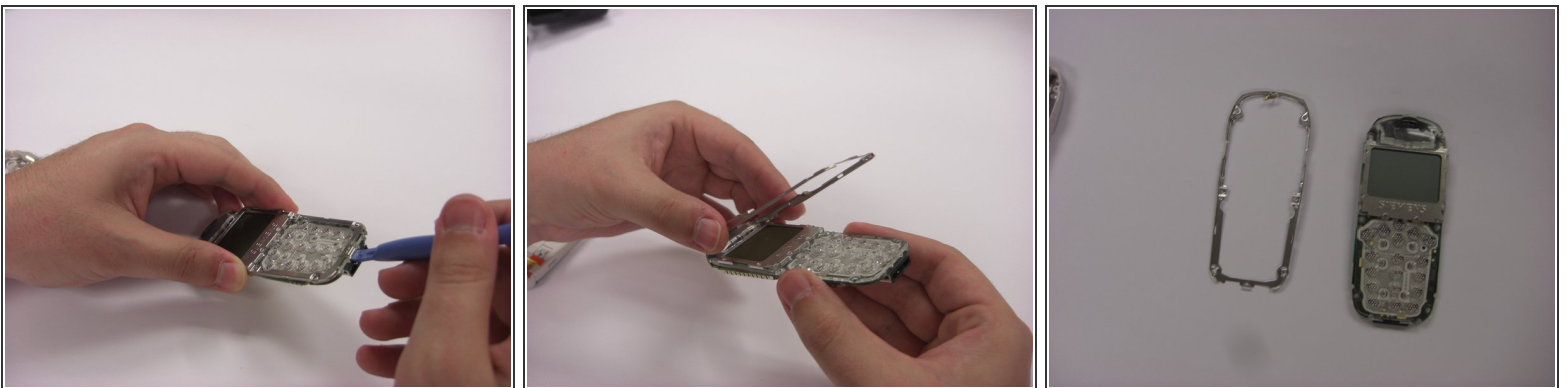
## Step 5



- To remove the back plastic cover, grasp the device with both hands as seen in the first picture.
- Gently remove the motherboard from the back plastic cover.

 The motherboard is fragile, so proper care is necessary when handling and storing in order to prevent damage.

## Step 6 — Motherboard Metal Frame



- Turn over the keypad interface and using the blue plastic opening tool, gently pry the bottom of the metal frame.
- Once loosened, the metal frame should be able to be lifted from the motherboard.

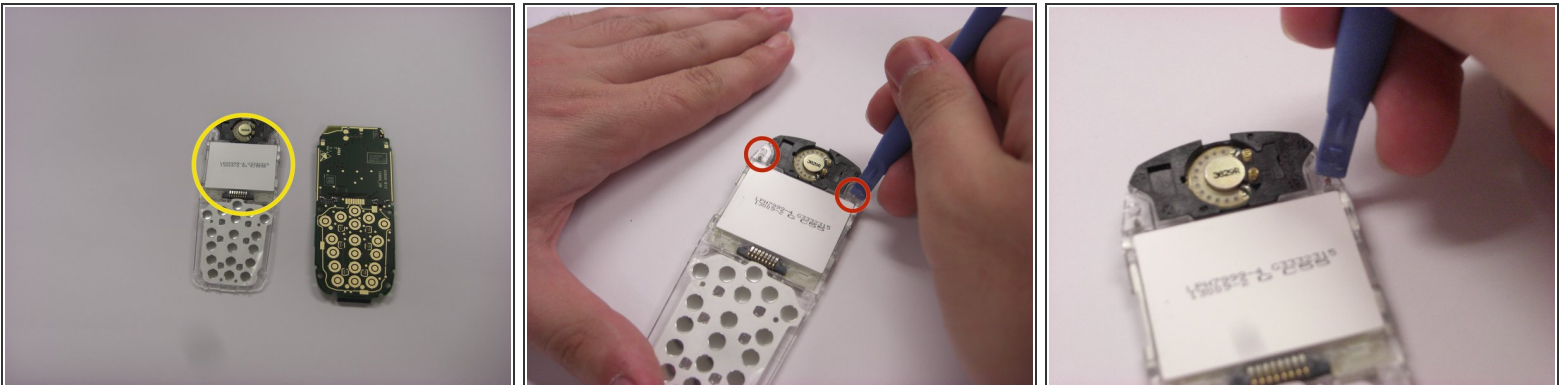


## Step 7 — Motherboard from Keypad Interface



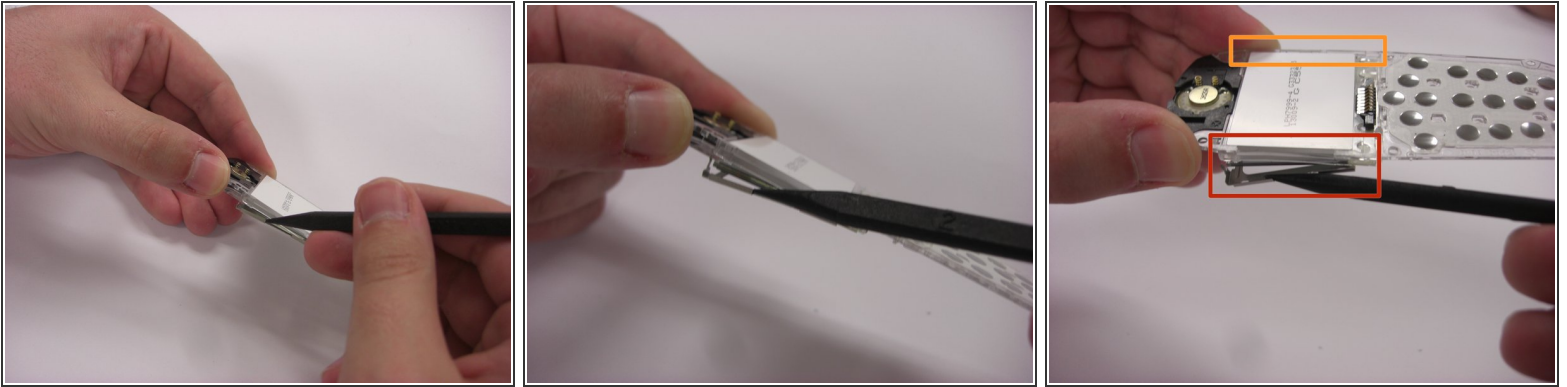
- Insert the fine-tipped spudger in between the motherboard and the keypad interface.
- Gently work the spudger across the length of the motherboard.
- ⓘ An adhesive exists between the motherboard and the keypad interface.
- Once loosened, the motherboard should easily separate from the keypad interface.

## Step 8 — LCD Display



- Locate the LCD Display.
- Above the display, there are two metal clasps. Bend the clasps until they are straight.

## Step 9



- On the sides of the display there are two more metal clasps.
- Gently bend the clasp so that the metal display frame becomes loose from the screen.
- Flip the device over and gently bend the other clasp so that the metal display frame becomes loose from the screen.

## Step 10



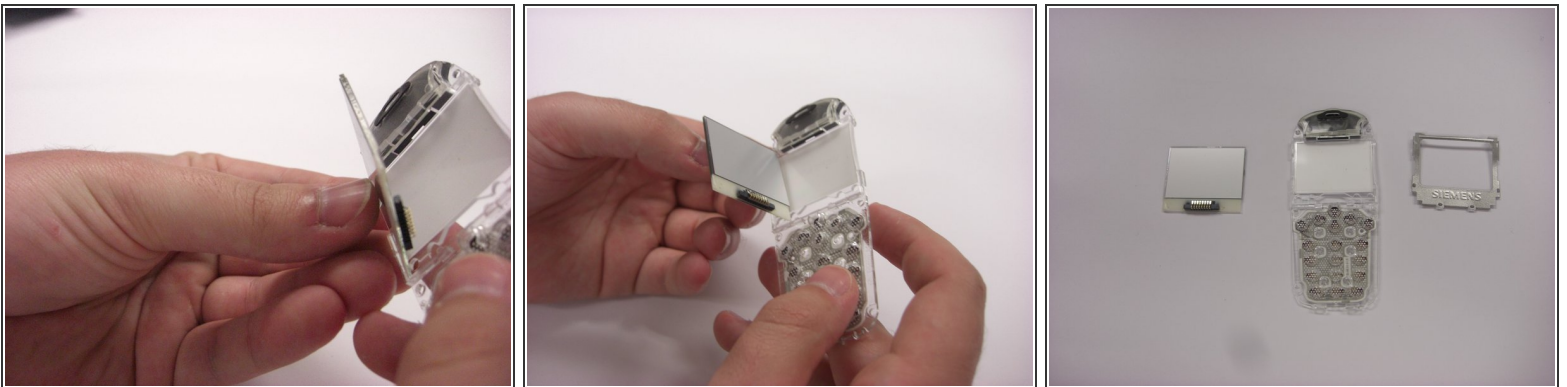
- Place the device so the display screen is facing up.
- On the bottom of the display frame, locate two plastic rivets.
- Remove these rivets by scraping with the plastic opening tool or a fingernail.
- ☑ Once removed, the plastic rivets can only be reapplied with a heat gun.

## Step 11



- To remove the metal frame, gently grab the frame and lift from the keypad interface.
- ⓘ If the frame cannot be easily removed, ensure that the metal clasps from steps 8 and 9 have been sufficiently bent to allow removal.

## Step 12



- Once the metal frame is removed, the LCD display should fall from the keypad interface when tilted.

To reassemble your device, follow these instructions in reverse order.