



Samsung SGH-C450 Teardown

Written By: Bryan



 **TOOLS:**

- [Phillips #0 Screwdriver](#) (1)
 - [Large Needle Nose Pliers](#) (1)
 - [Flathead 3/32" or 2.5 mm Screwdriver](#) (1)
 - [iFixit Opening Tools](#) (1)
-

Step 1 — Samsung SGH-C450 Teardown



- Remove the battery cover, battery and SIM Card.

Step 2



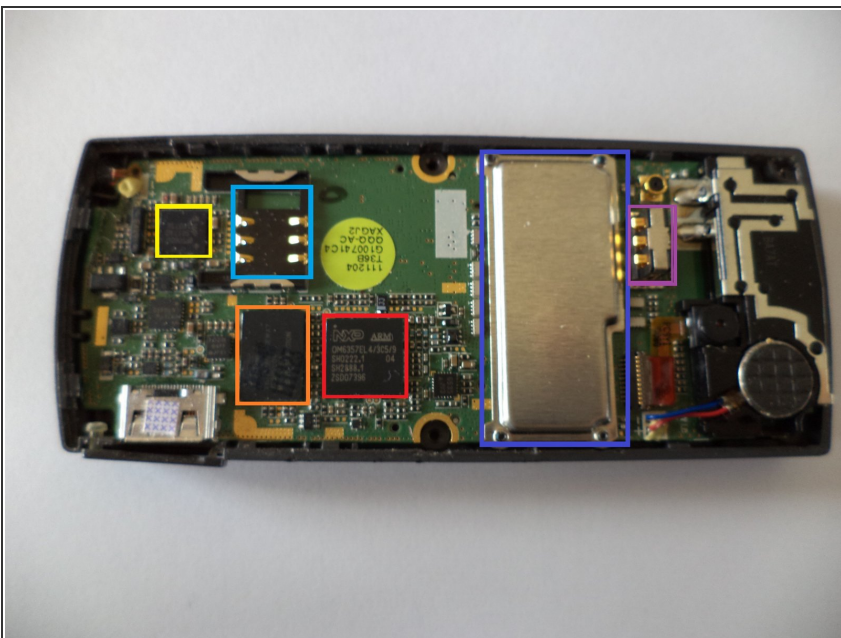
- Remove these screws.

Step 3



- Insert your flathead screwdriver or opening here and go around the device
- Gently pry open the case.

Step 4



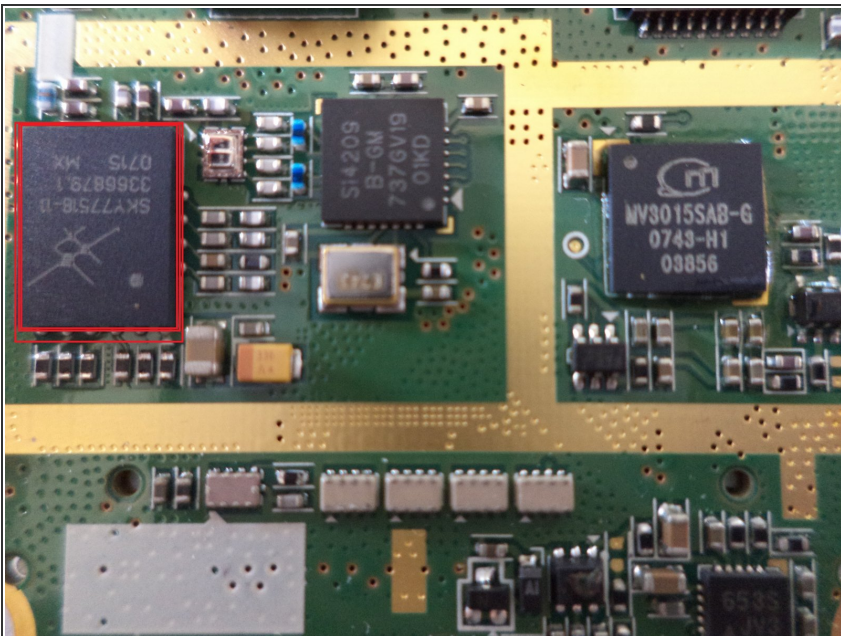
- Once the case is removed you can see the PCB.
- NXP OM6357EL4 ARM CPU
- SPANSION Flash Memory
- NXP CF50600 battery and power supply controller
- SIM Card slot
- EMI Shield
- Battery Contacts

Step 5



- To get the other side of the PCB, pull up the edges of the PCB with a flathead screwdriver.
- To remove the EMI shield on the other side, remove these screws

Step 6



- The IC's under the EMI shield.
- Skyworks SKY77518 Dual-Band GSM/GPRS Module

Step 7



● Finished!

To reassemble your device, follow these instructions in reverse order.