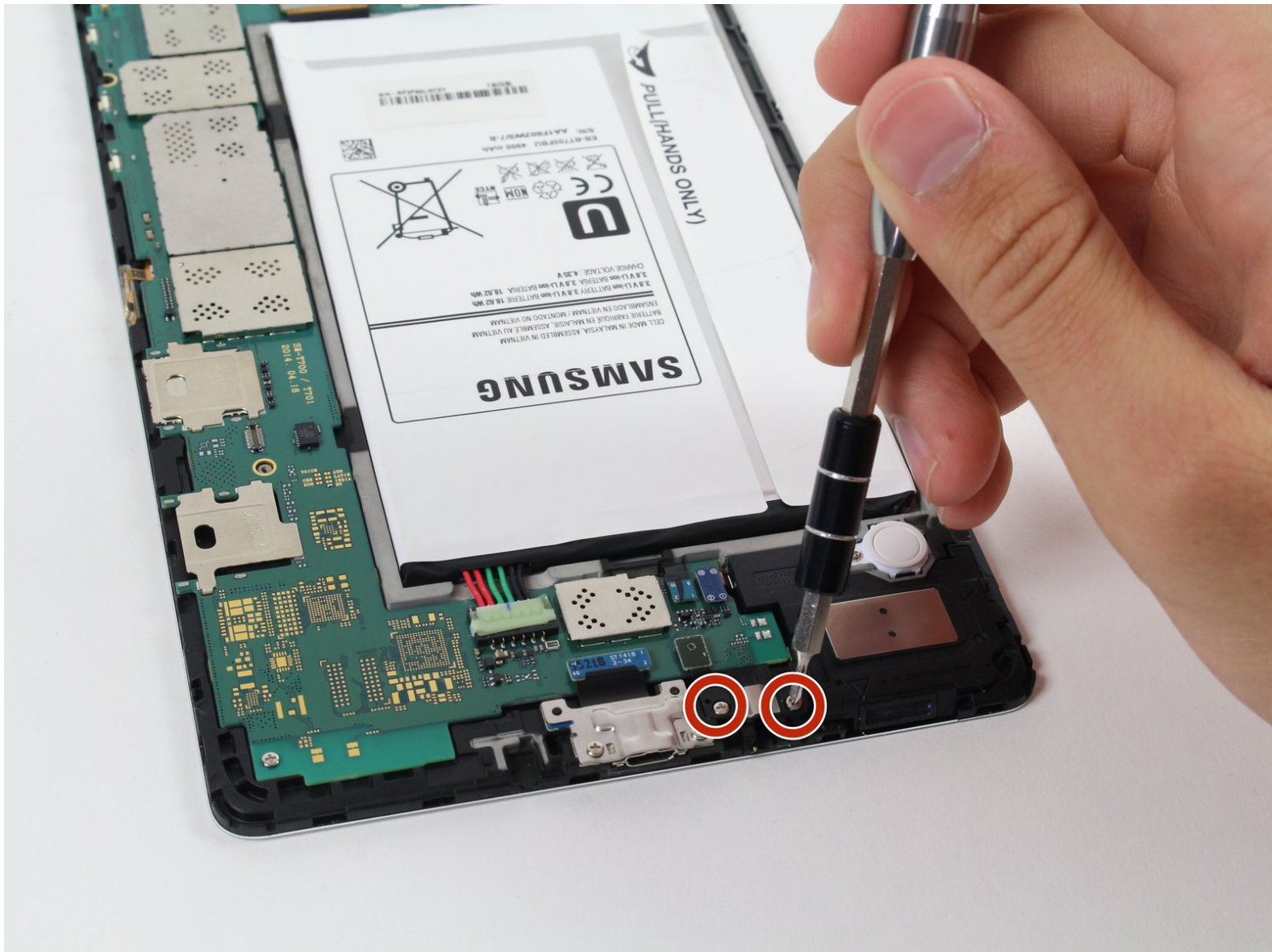




Samsung Galaxy Tab S 8.4 Headphone Jack/Speakers Assembly Replacement

Learn how to replace the headphone jack, as well as the upper and lower speakers on your Samsung Galaxy S 8.4.

Written By: Trent Chapman



INTRODUCTION

Over time a speaker may become damaged and the audio sound quality may become poor. If this is to occur, replacing the speaker can fix this issues. This guide will show you how to replace the headphone jack and speakers.



TOOLS:

- [Phillips #000 Screwdriver](#) (1)
- [iFixit Opening Tools](#) (1)
- [Metal Spudger](#) (1)



PARTS:

- [Galaxy Tab S 8.4 \(Wi-Fi\) Headphone Jack Assembly](#) (1)
- [Galaxy Tab S 8.4 \(Wi-Fi\) Left Speaker Assembly](#) (1)

Step 1 — Back Cover



- Place the plastic opening tool between the face of the display and rim of the back cover of the device.
- Move the plastic opening tool in a downward motion until you see separation between the tablet and back cover.

Step 2



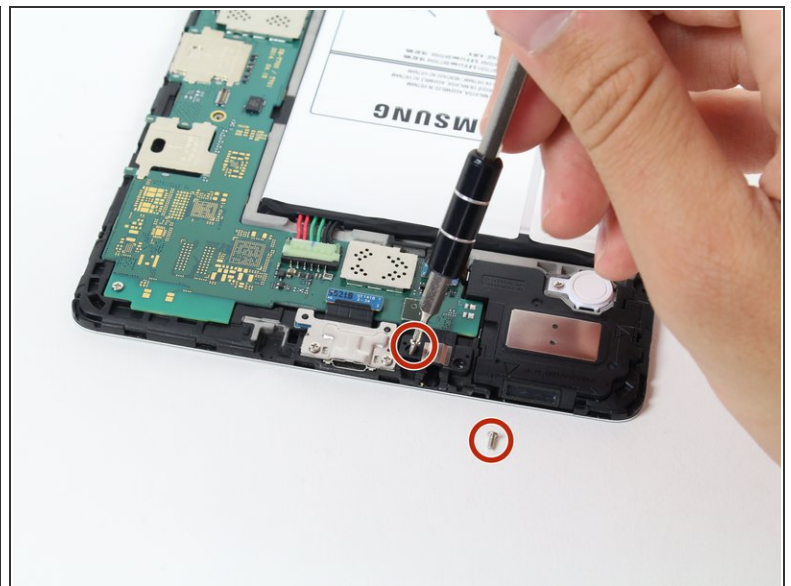
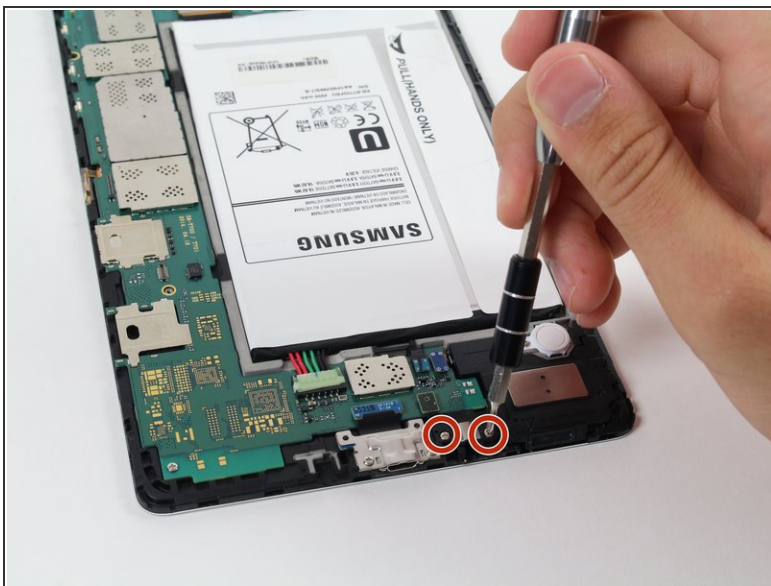
- By sliding the plastic opening tool around the rim of the device, carefully continue to pry apart the screen and back cover.
- ⓘ Try to separate evenly on all sides until the screen detaches from the device backing completely.
- ⓘ If this is the first time removing the back cover, it will be rather difficult to separate it from the tablet.

Step 3



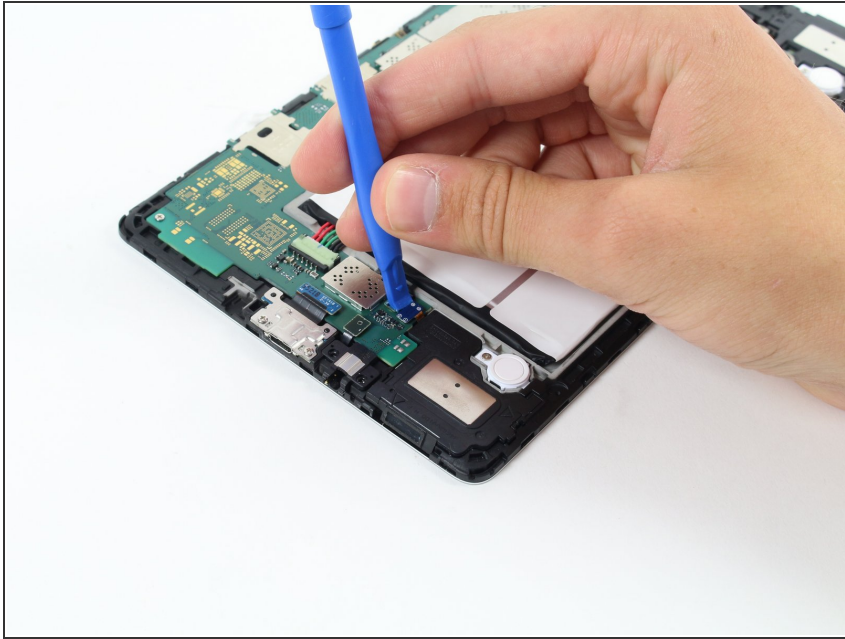
- Remove the back cover after the entire rim is disconnected.

Step 4 — Headphone Jack/Speakers Assembly



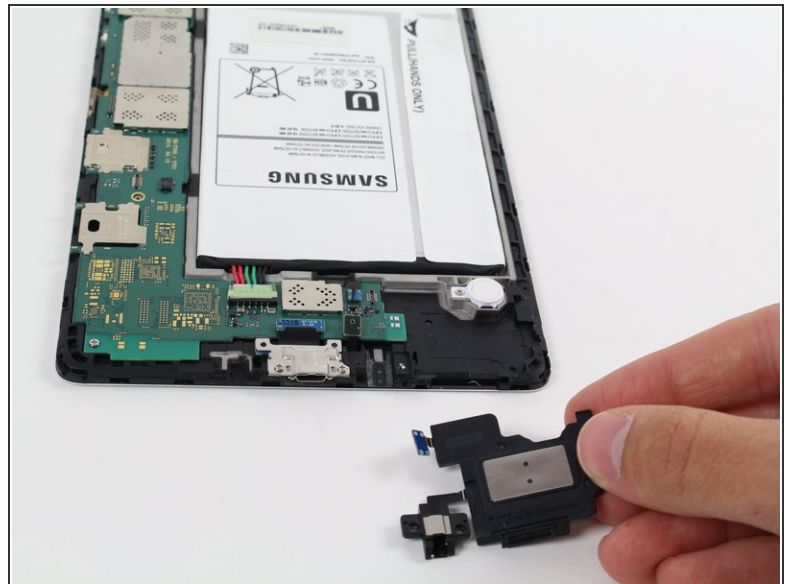
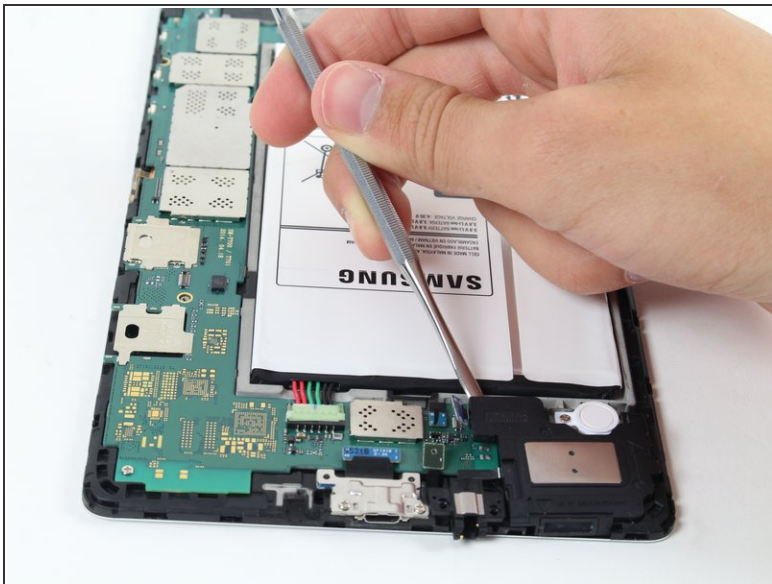
- Remove the two 2 mm Phillips #000 securing the headphone jack.

Step 5



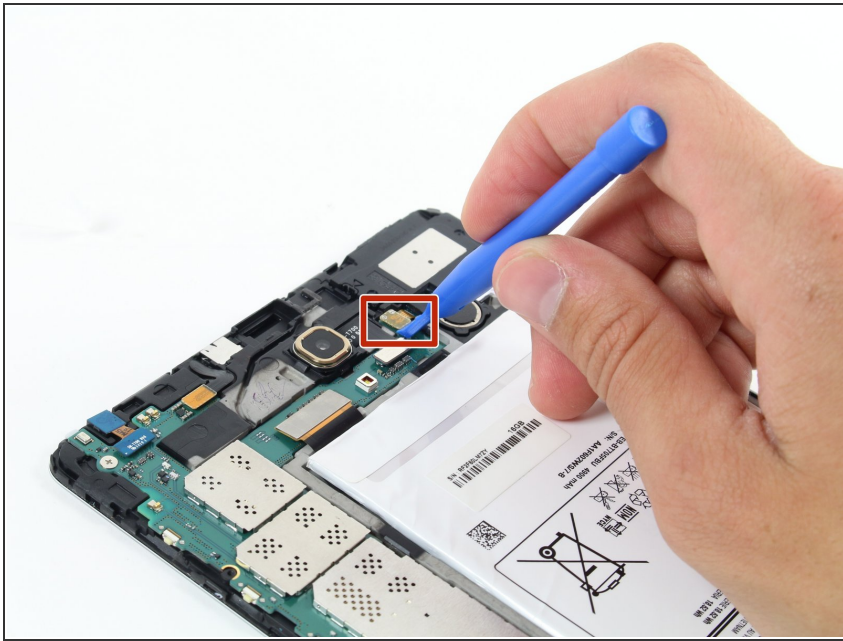
- Disconnect the blue connector by gently popping it off of the motherboard with a plastic opening tool.

Step 6



- Use the metal spudger to pry from the top left corner of the headphone jack/lower speaker assembly.
- Gently lift the headphone jack/lower speaker assembly free of the device.

Step 7



- Locate the top speaker.
- Use a plastic opening tool to disconnect the green-gold upper speaker connector from the motherboard.

Step 8



- Use a spudger to pry the upper speaker up and away from the device.

To reassemble your device, follow these instructions in reverse order.