



Rockford Fosgate P300-12 Teardown

Rockford Fosgate P300-12 12" 300W powered subwoofer

Written By: bassblaster505



TOOLS:

- [Essential Electronics Toolkit \(1\)](#)
-

Step 1 — Rockford Fosgate P300-12 Teardown



- Front view

Step 2



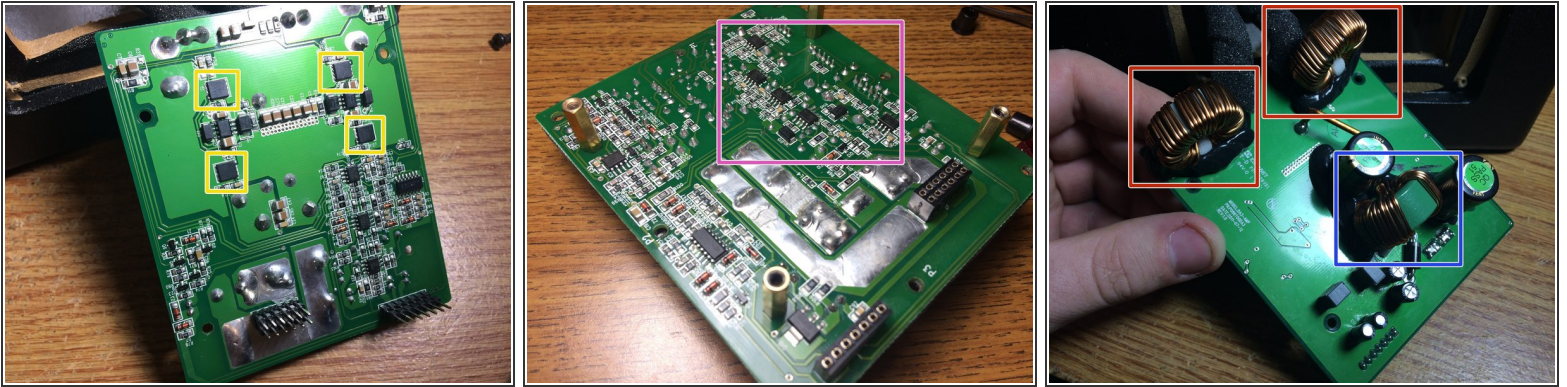
- Remove the 8 coarse thread wood screws and gently pry the plate out

Step 3



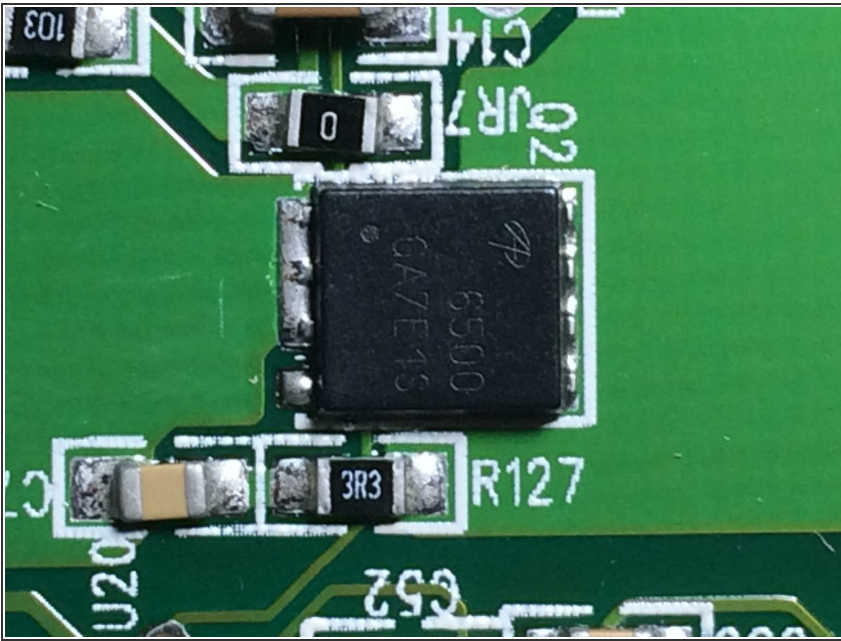
- Carefully remove the 3 knobs and the 1 screw between the 2 10A fuses. then the plastic face should pop off

Step 4



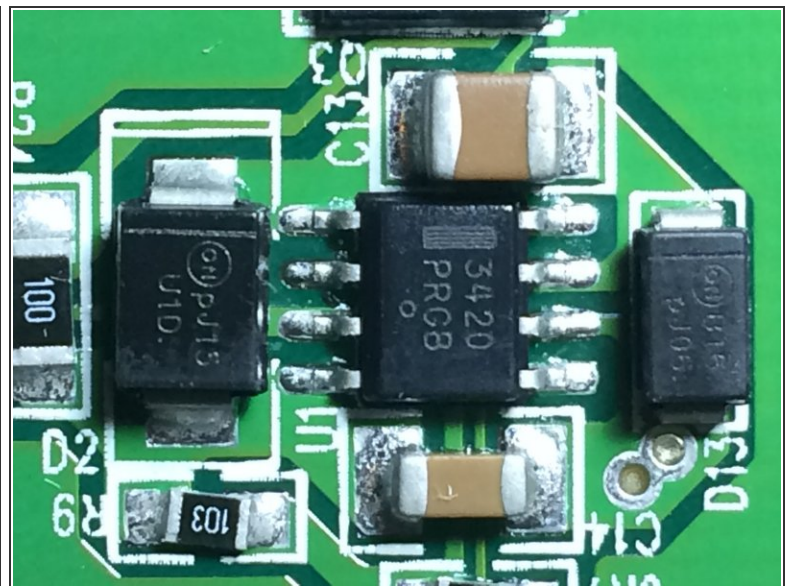
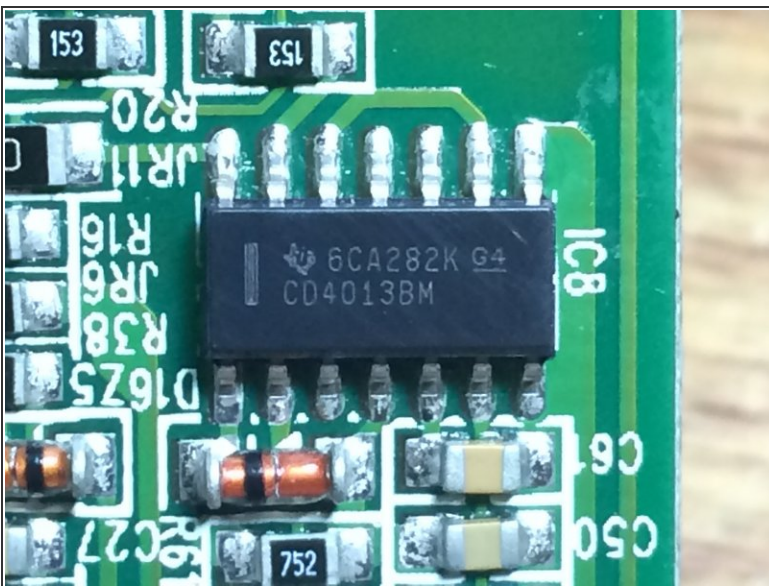
- Crossover / Gain
- Power Supply and output FET's
- Power Supply Transformer
- Output Filters
- The 2 boards are held together by 4 screws on the edges of the PCB, gently pull them apart, they will only be held together by pin headers. Here you can see the 2 output filters and the power supply step up transformer
- The board with the FEMALE pin headers is the front board with the plugs on it. the crossover network consists of JRC 4850's

Step 5



- There are 4 of these "GA7E1S" FET's that i cant find any info on. i would assume by looking at the boards that 2 are the power supply and the other 2 are the outputs
- There are NO heatsinks anywhere in this unit which i find amazing. but the FETS most likely use the massive copper planes on the board as the heatsink

Step 6



- More jelly bean logic around the board

Step 7



- The custom 12" driver. it appears to be a DVC driver, but it just a SVC with 2 pairs of leads going to it