



Ridgid Circular Saw R3205 Spindle Lock Replacement

How to Replace the Spindle Lock on a Ridgid R3205 circular saw. The Spindle Lock on a circular saw holds the blade in place while removing the blade.

Written By: Joshua Caron



INTRODUCTION

The Spindle Lock on a circular saw is one of the most commonly replaced items. The Spindle Lock wears down due to regular blade replacements. Replacing the Spindle Lock is very moderately easy and doesn't require any complicated methods.



TOOLS:

- [6mm Allen Wrench](#) (1)
- [ESD-safe pry tool](#) (1)
- [Phillips #1 Screwdriver](#) (1)



PARTS:

- [spindle lock](#) (1)

Step 1 — Blade



- Press the black spindle lock and hold it down.
- While keeping the spindle lock pressed down use a 6mm allen wrench to remove the 5/16-18 x 0.55 inch screw.

Step 2



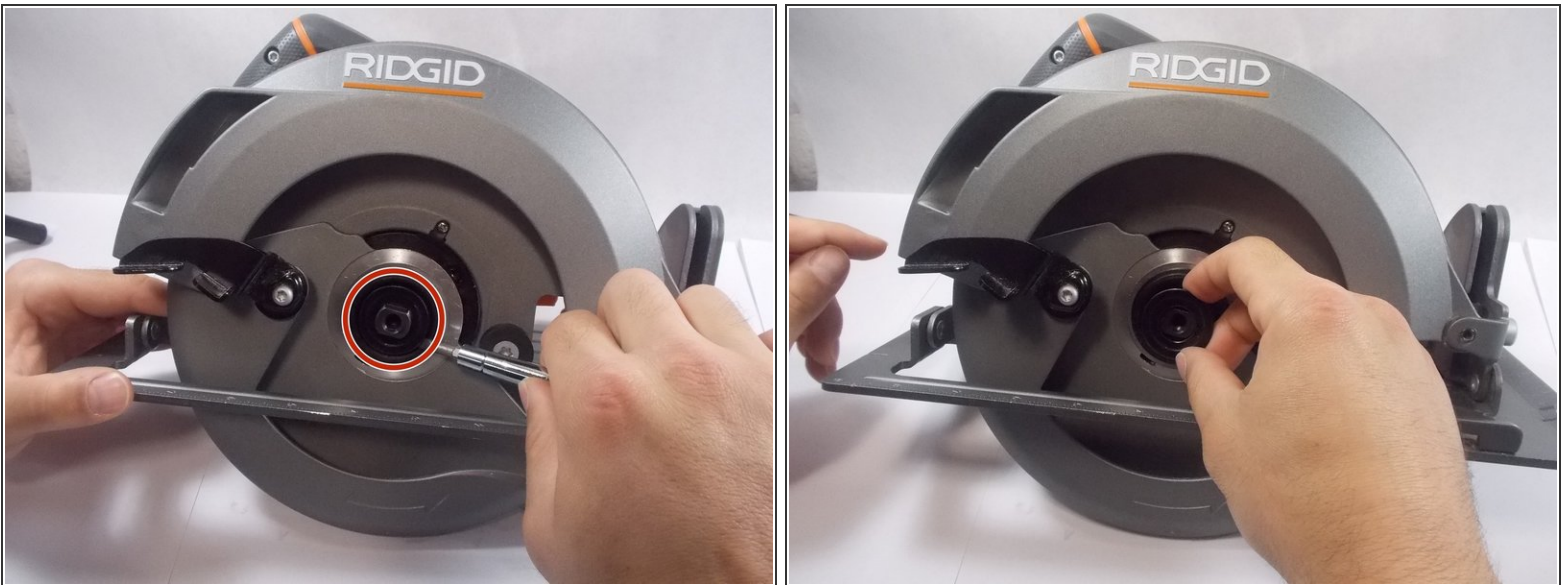
- Release the spindle lock and remove the outer flange by lifting it off the output shaft.

Step 3



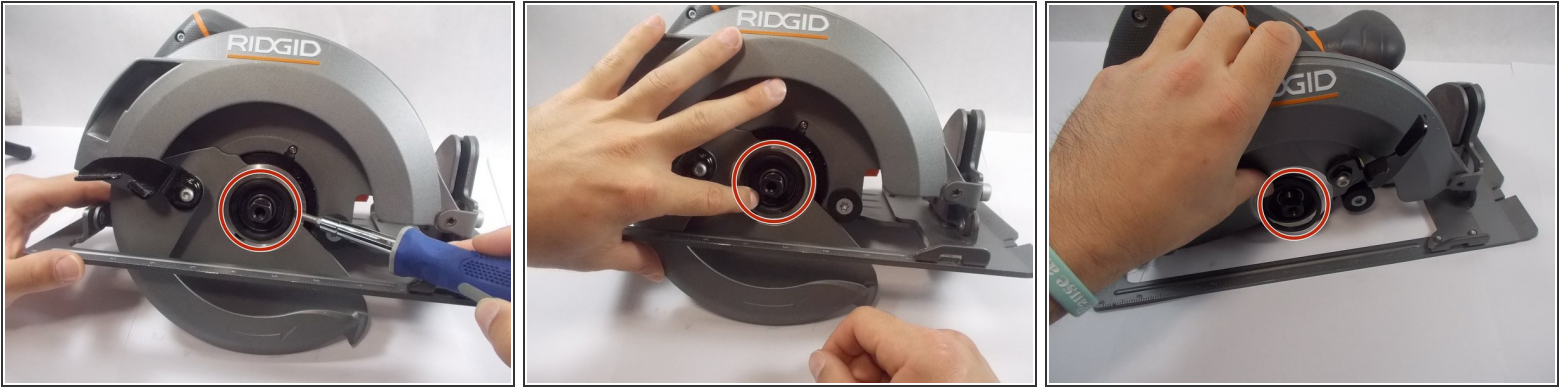
- With the outer flange removed retract the lower blade guard into the upper blade guard housing by pushing on the black lever.
- Slide the blade out of from the bottom of the saw.

Step 4 — Lower Blade Guard



- Use a prying tool or your fingers to remove the inner flange.

Step 5



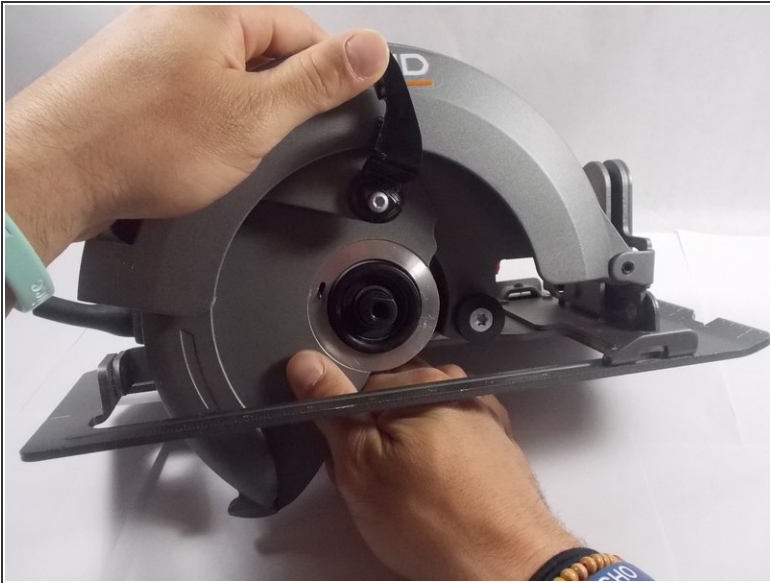
- Remove the external retaining ring with a screwdriver by expanding it and then prying it out.

Step 6



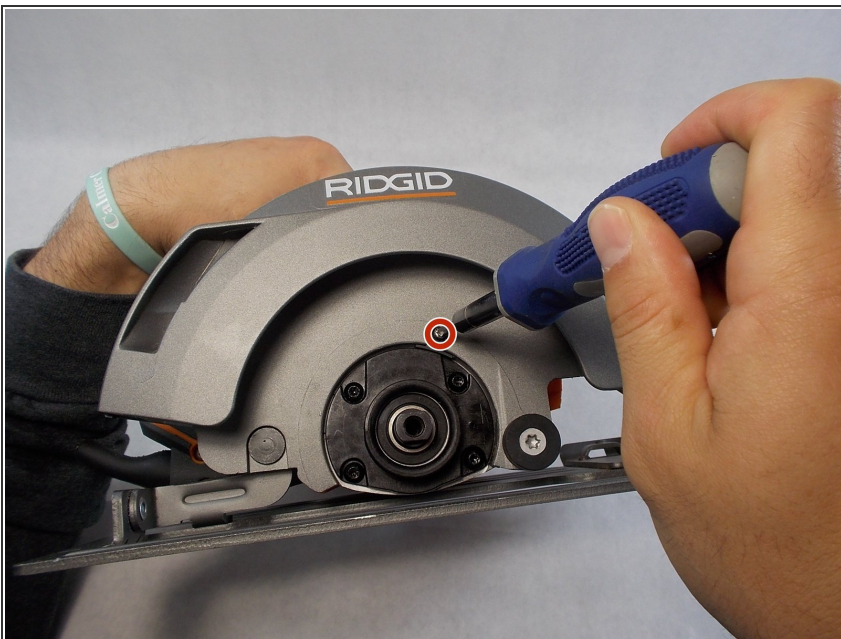
- After removing the external retaining ring, remove (OD50 x ID42 x 0.8t) washer.

Step 7



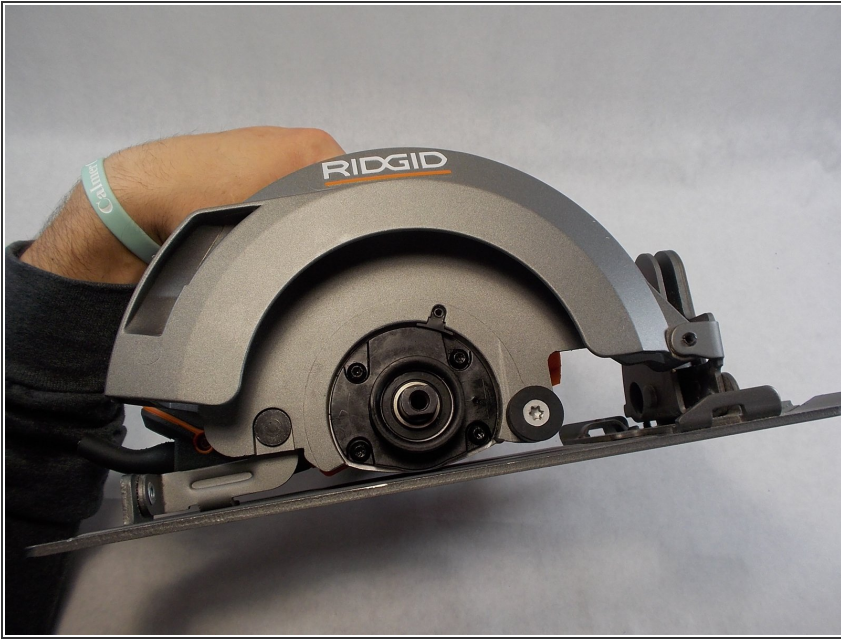
- Remove the lower blade guard after removing the washer.

Step 8 — Spindle Lock



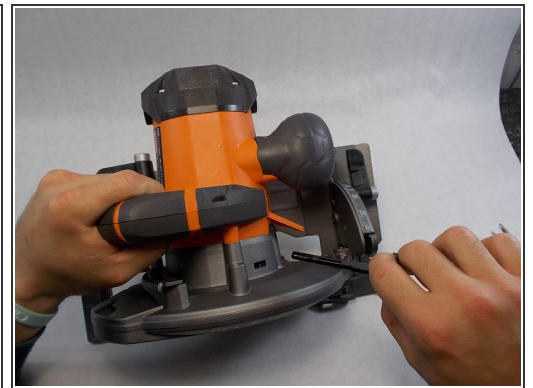
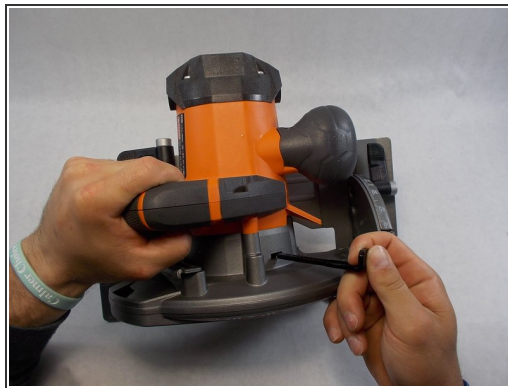
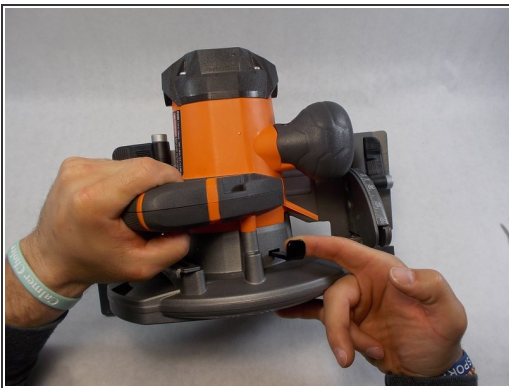
- Remove the (M3 x 12 mm) screw using a phillips head screwdriver.

Step 9



- Leave the rubber dust cover below the removed screw.

Step 10



- Pull out the Spindle Lock.

To reassemble your device, follow these instructions in reverse order.