



Replace HDD hard disk

Written By: Felice Suglia



 **TOOLS:**

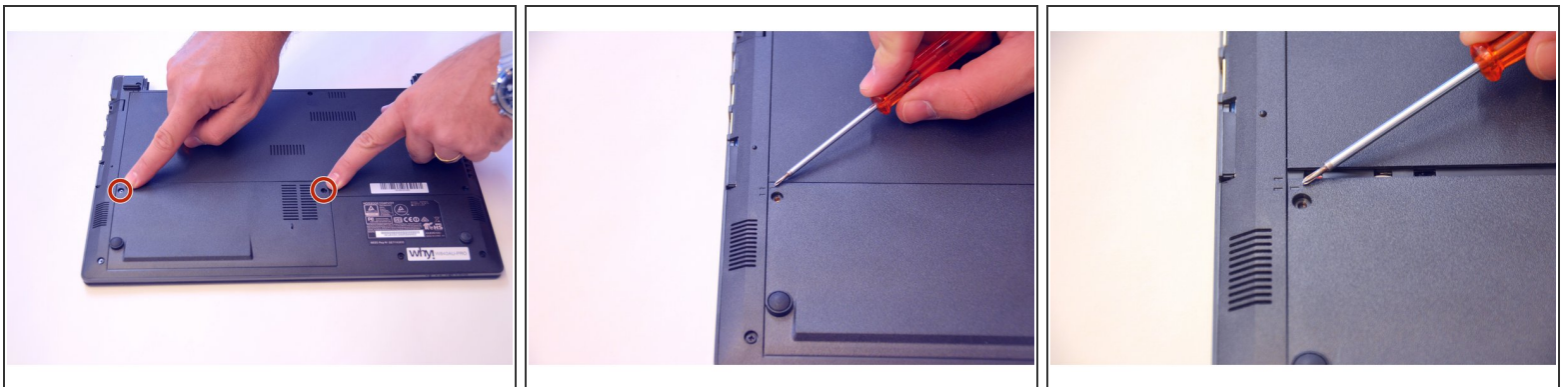
- [Phillips #0 Screwdriver](#) (1)
-

Step 1 — Battery



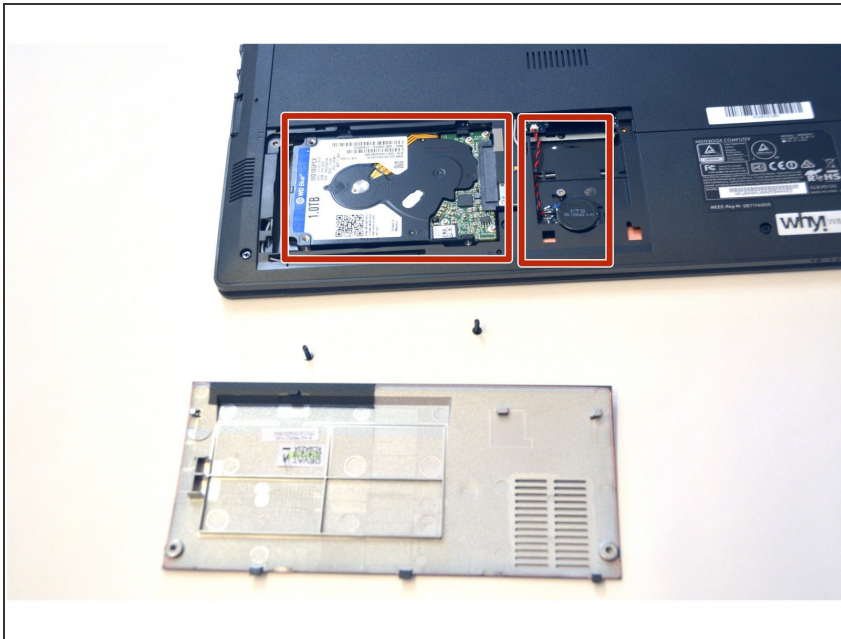
- Open the latch on the right side that secures the battery in place.
- Open the latch on the left side that secures the battery in place.
- Now remove the battery.

Step 2 — Access to the components 1



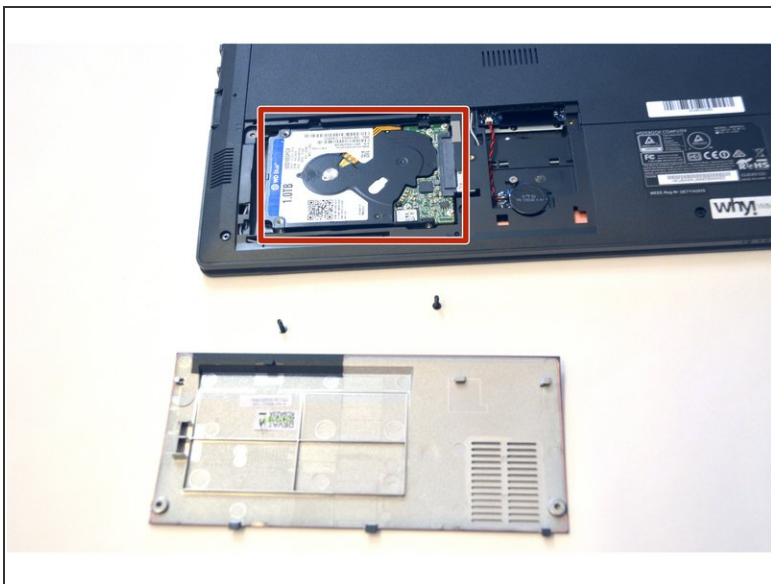
- Use the Philips screwdriver to remove the two screws on the bottom cover.
- Check the markers to determine how to remove the cover.
- Now remove the cover as prescribed by the markers.

Step 3



- The components HDD hard disk and BIOS battery are now visible.

Step 4 — HDD hard disk



- Unplug the HDD hard drive from its SATA3 connector.
- This is what the HDD hard drive looks like

To assemble the device again, proceed in reverse order.