



Replace AirPort Time Capsule A1409 HDD

How to replace Hard Disk Drive for Air Port Capsule Model A1409 (fourth generation).

Written By: David Medrano

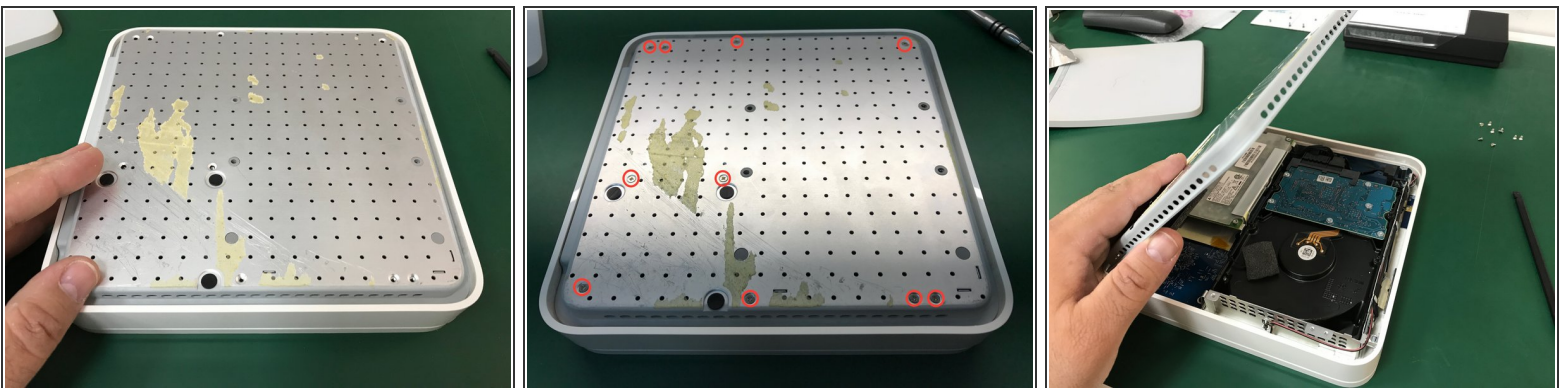


Step 1 — Hard Disk Drive



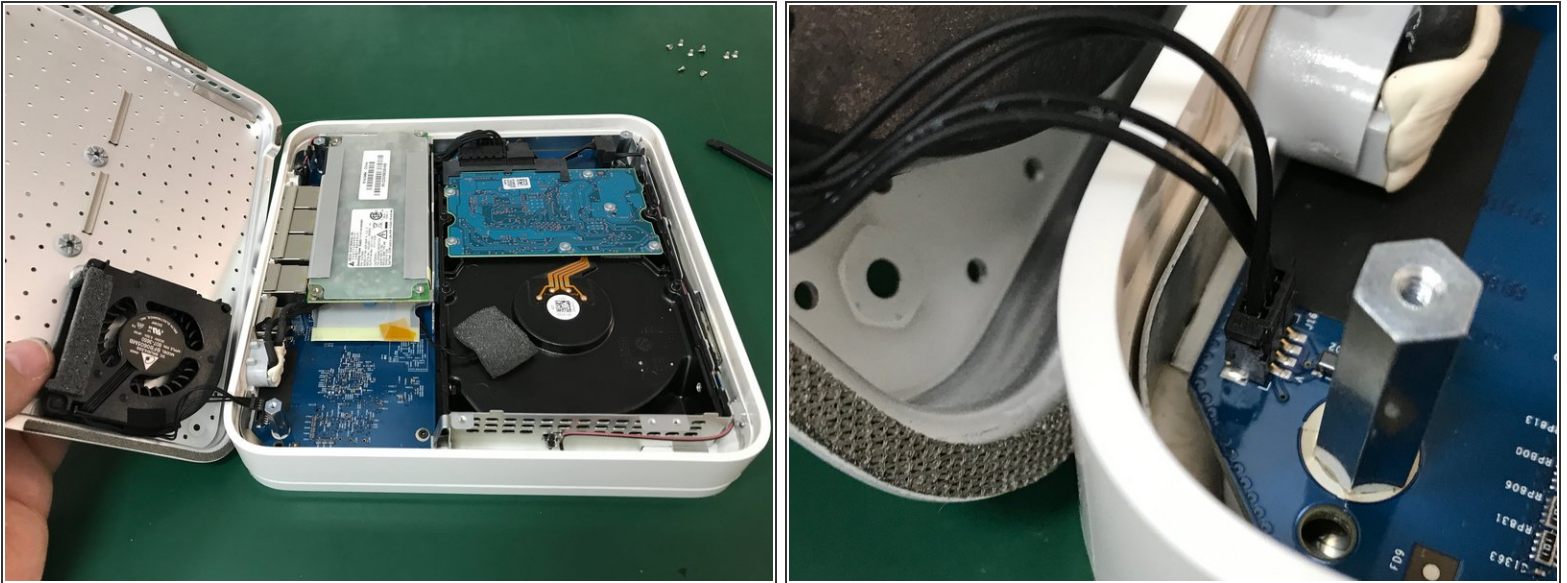
- We put the unit upside down and take off the rubber bottom cover. It is better to start at a corner.
- We warm the lid to take it off. It takes a lot of glue all over the surface. Be patient and very careful.

Step 2



- Remove the # 10 Phillips # 00 screws that hold the Time Capsule's lower metal bracket.
- Open to the left leaving the network connectors on that side. Do not open fully to avoid breaking the fan cable.

Step 3



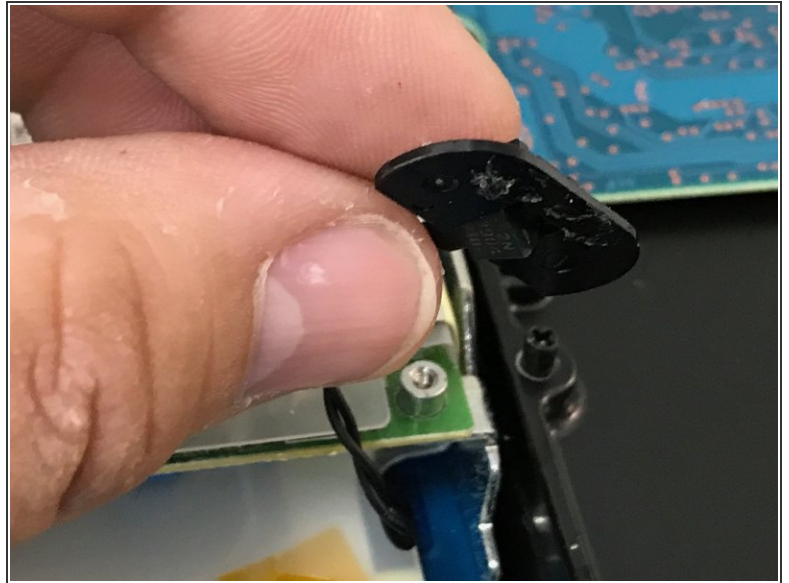
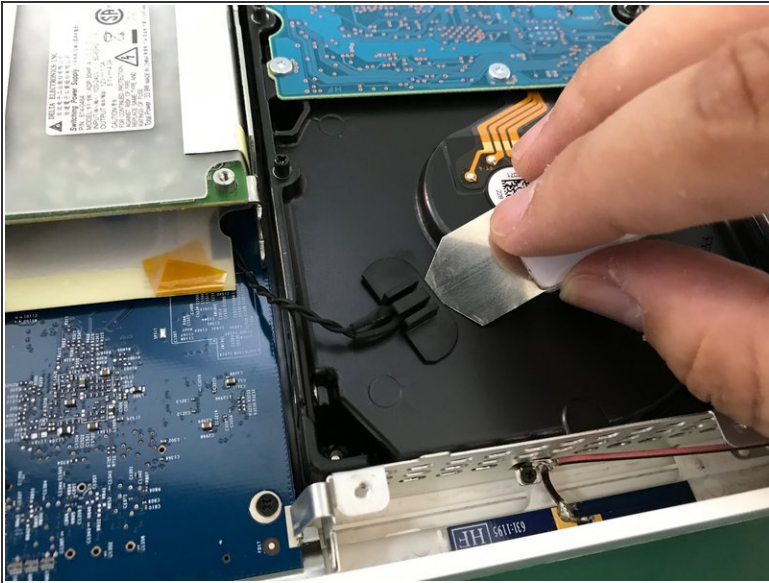
- With the tip of a spudger carefully remove the fan connector and remove the metal bottom cover.

Step 4



- We can observe the temperature sensor on the surface of the hard disk.
- Carefully remove the tape covering the temperature sensor.

Step 5



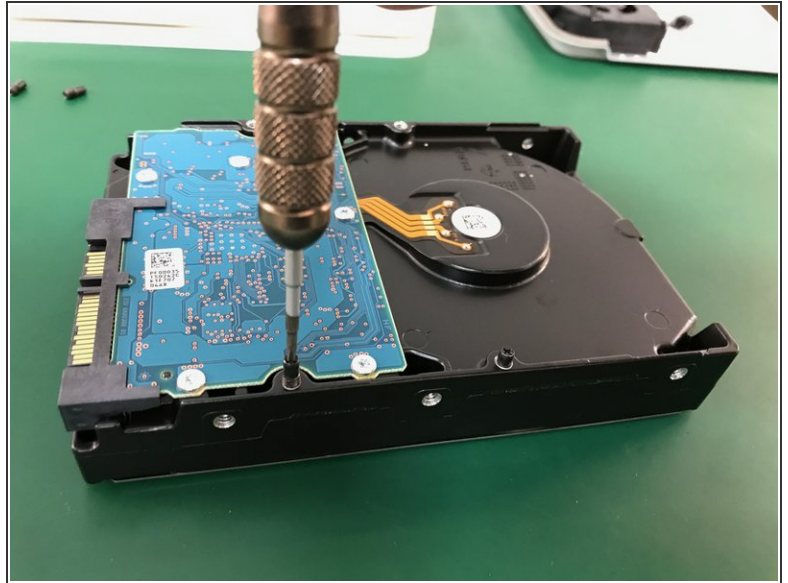
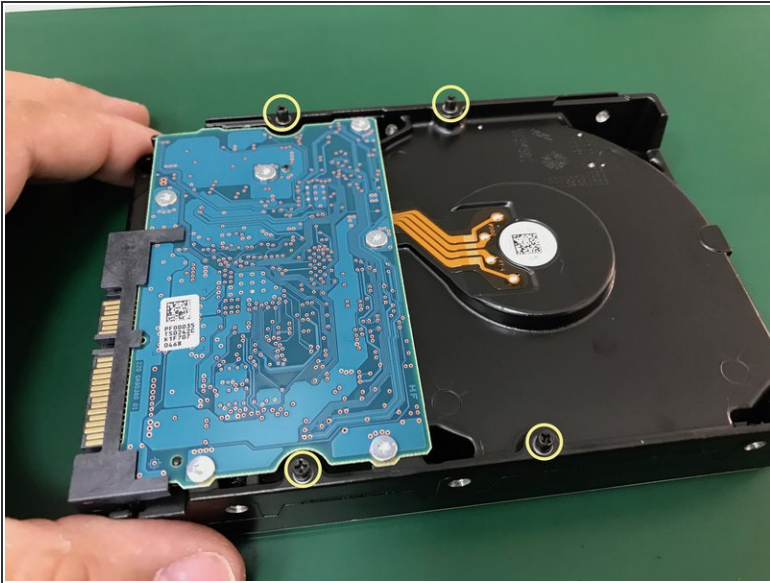
- Remove the clip that holds the temperature sensor and remove both.

Step 6



- Lift the hard drive a bit without pulling too hard to not cause damage to the power and data connectors of the hard disk. Removing the power connector from the hard drive
- Remove the data connector from the hard disk.

Step 7



- Once we have the disc out of the Time Capsule, we remove the 4 Phillips head # 00 pillars and place them in the new unit.

To reassemble your gadget, follow these instructions backward.