



Nobis NB07 Battery Replacement

This guide will guide through the steps of removing and replacing your tablet's battery.

Written By: Daniel Gomero



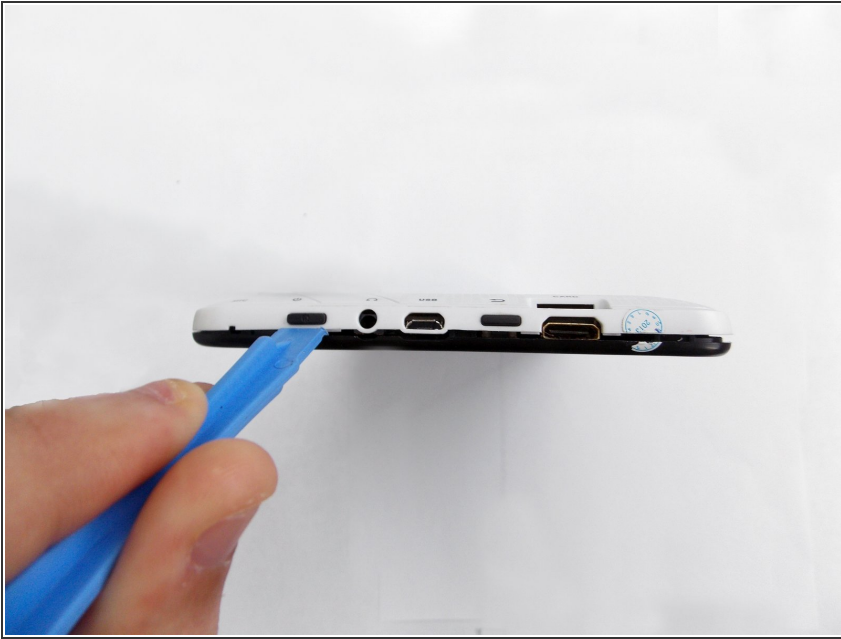
INTRODUCTION

To complete this guide, you will need to disassemble your tablet and use a soldering iron to replace the battery. The battery is removed first in most cases, even if you are trying to remove other components.

TOOLS:

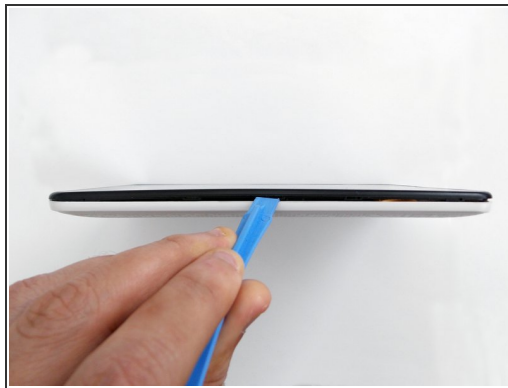
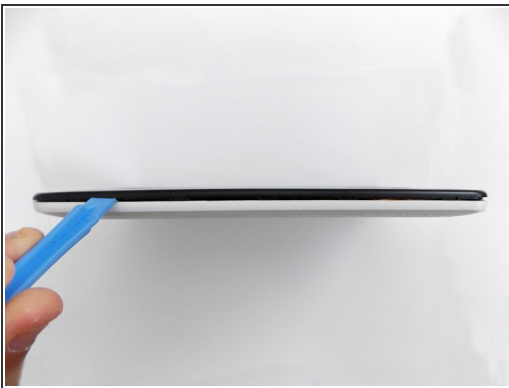
- [Spudger](#) (1)
 - [iFixit Opening Tools](#) (1)
 - [Soldering Workstation](#) (1)
 - [Electrical Tape in 6 Assorted Colors](#) (1)
 - [Low Adhesive Glue](#) (1)
-

Step 1 — Opening the case



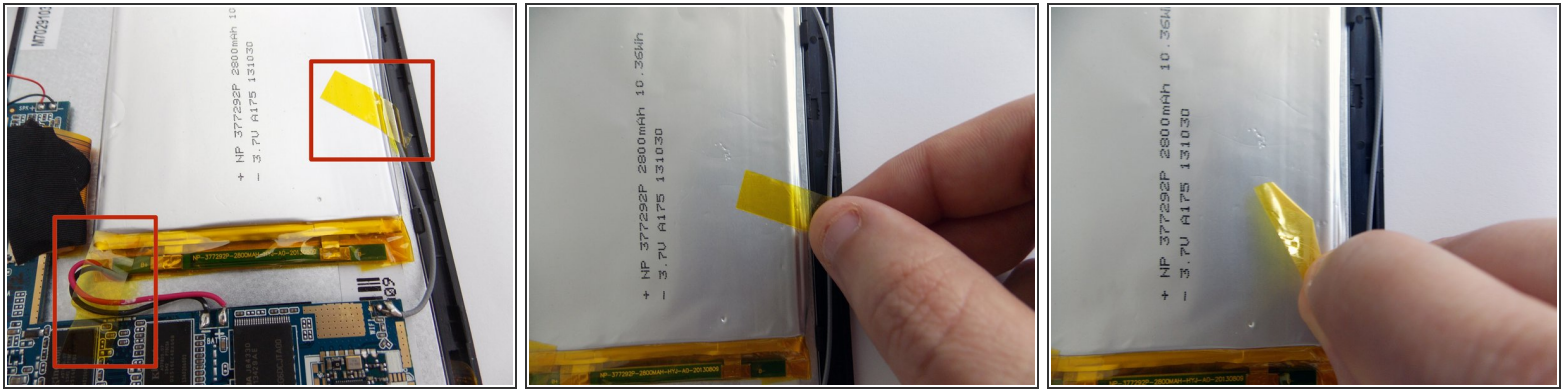
- Look towards the topside of the tablet, where the power button is located.
- Insert a plastic opening tool in the crack between the two parts of the case.
- Move it gently back and forth to open the case.

Step 2



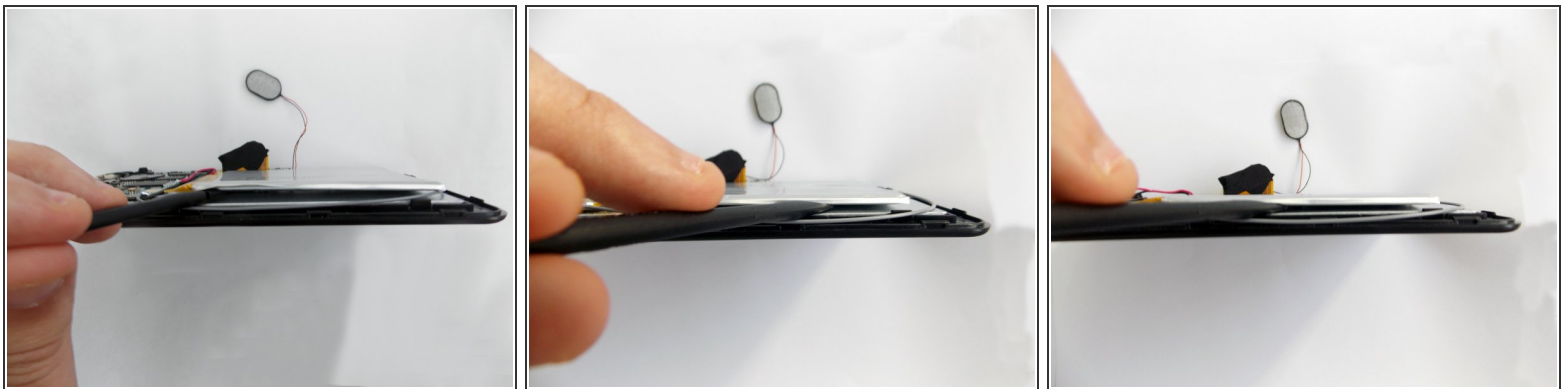
- With the plastic opening tool in the opening between the two sides of the case, slide the tool along the tablet's border to separate the two sides completely.
- ⚠ Be careful when you separate the two halves. Open the case from the opposite side of the camera, there is a cable connecting both halves of the case.

Step 3 — Replacing the battery



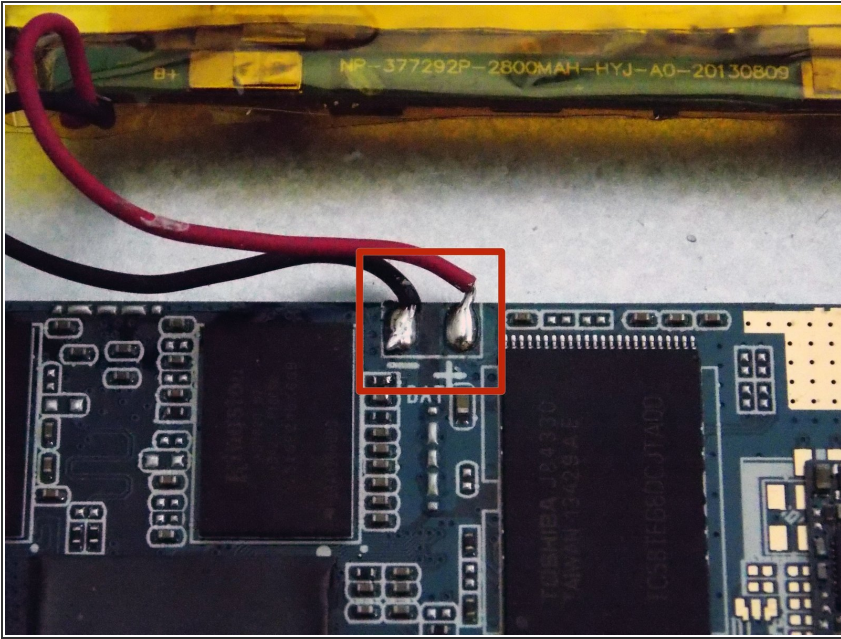
- Remove the tape holding the battery in place.

Step 4



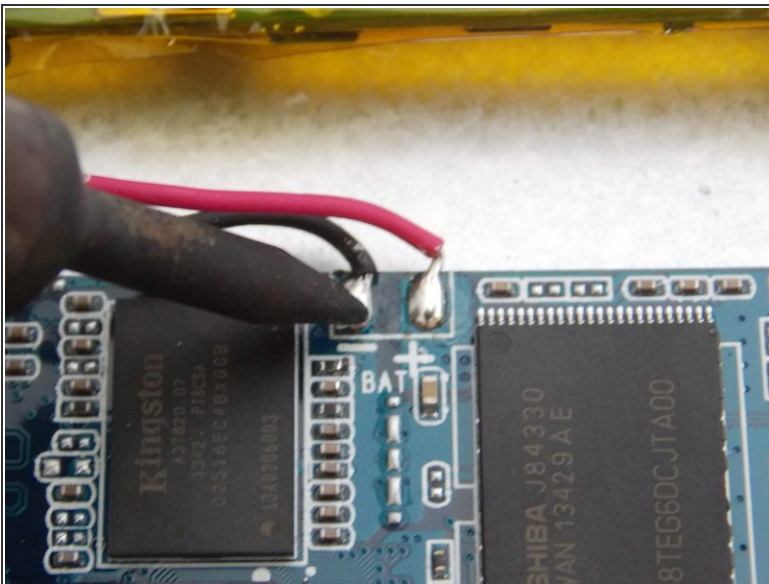
- Insert the flat end of the spudger tool in the crack beneath the battery.
 - Move the spudger tool carefully side to side to remove the glue that is holding the battery in place.
- i** This is a soft battery, so a little bending is expected.

Step 5



- After the battery is unglued, locate the cables that connect it to the motherboard.
- ⓘ Annotate where each color goes to make the reassembly easier.

Step 6



- Desolder the cables with a soldering iron and use a desoldering braid to remove the solder.
- ⓘ Review the [ifixit soldering guide](#) if you need help soldering.
- ☑ You can now remove the battery.

To reassemble your device, follow these instructions in reverse order.