



Nintendo DS Upper LCD Screen Replacement

Use this guide to replace the upper LCD Screen of your Nintendo DS.

Written By: dnguye26



INTRODUCTION

The top LCD is easy to remove once the rest of the cover and circuit board have been taken out. Follow this guide if you need to replace it on your Nintendo DS.

TOOLS:

- [Spudger](#) (1)
- [Probe and Pick Set](#) (1)
- [Phillips #00 Screwdriver](#) (1)
- [Tri-wing Screwdriver](#) (1)
- [Tweezers](#) (1)
- [iFixit Opening Tools](#) (1)

PARTS:

- [Nintendo ds battery](#) (1)

Step 1 — Battery



- Remove the cartridge from the console.
- Use a Phillips #00 Screwdriver to remove the screw securing the battery door to the rear case.
- Remove the battery door.

Step 2



- Use a plastic opening tool or spudger to pry out the battery from the bottom. If a plastic open tool or spudger isn't available, your fingernails may work.

Step 3



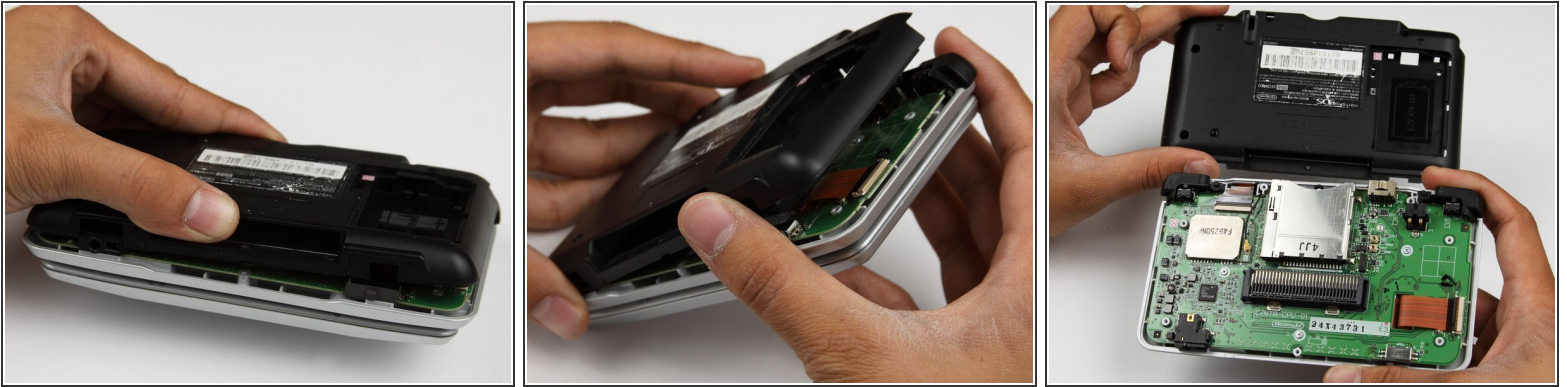
- Remove the battery from the Nintendo DS.

Step 4 — Back Panel



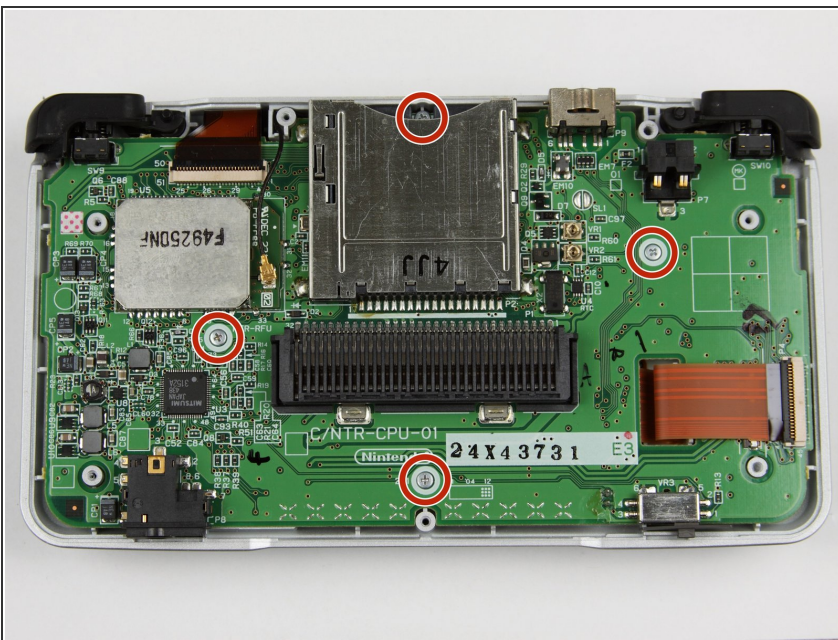
- Remove the seven Y0 screws located on the back.
- ⓘ It might be helpful to remove the strap from the hole to access the top left screw.

Step 5



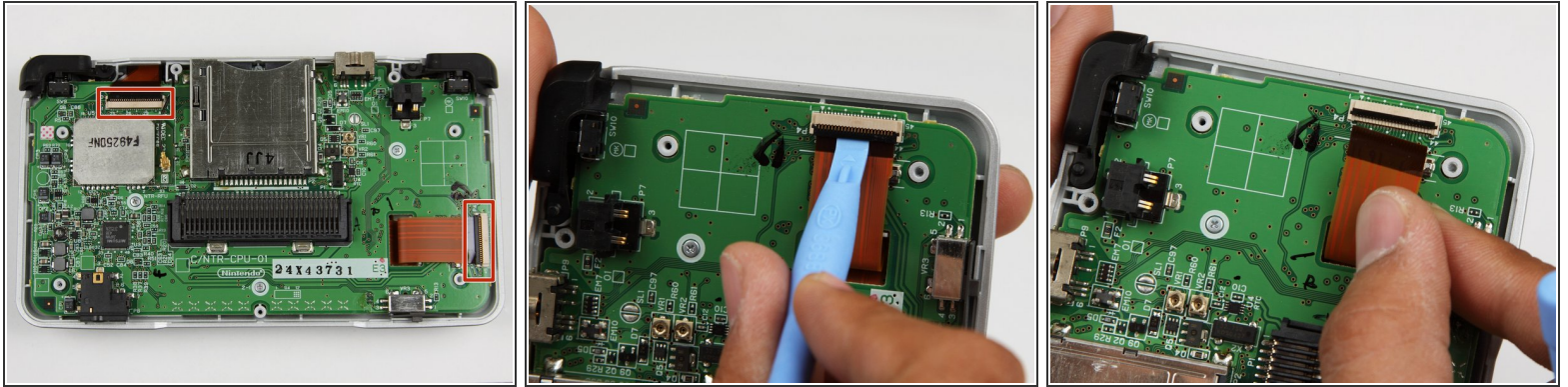
- With your hands, pry the back panel off the main case.
- Separate the back from the front, and set it aside.

Step 6 — Main Circuit Board



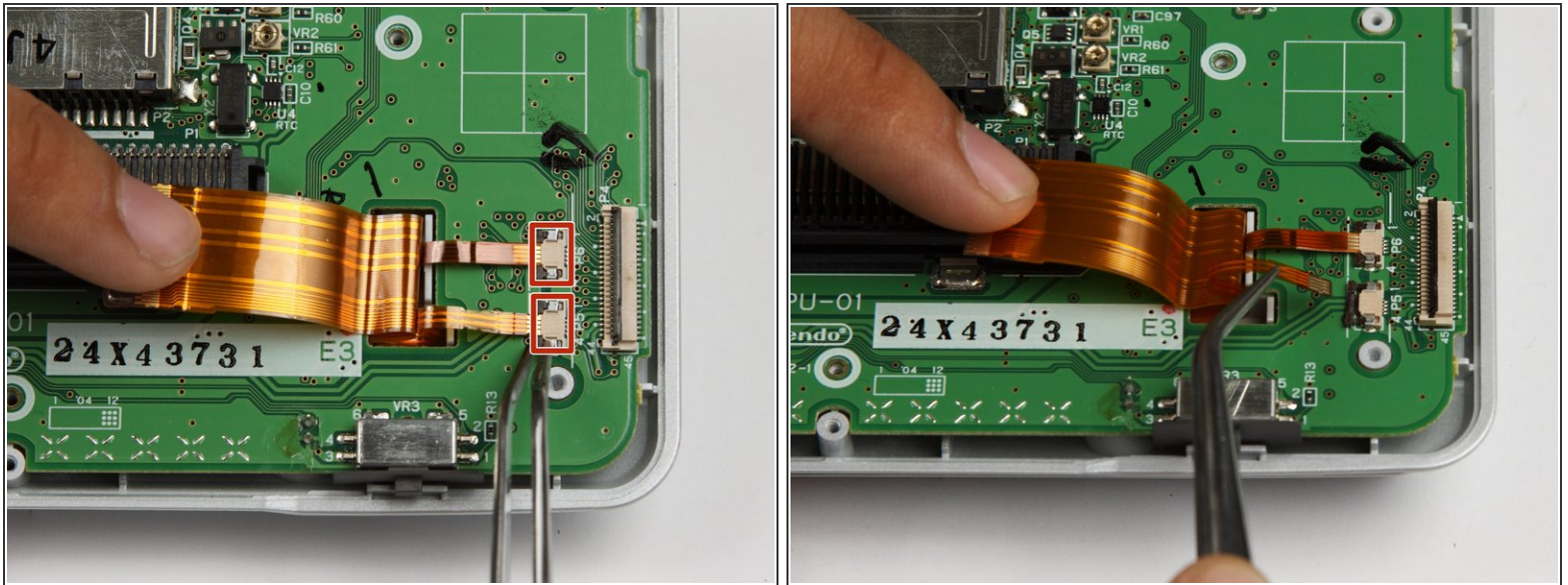
- Using a Phillips #00 screwdriver, remove the four screws on the circuit board.
- ⚠ Be careful NOT to slip with the screwdriver, you can damage the circuit board!

Step 7



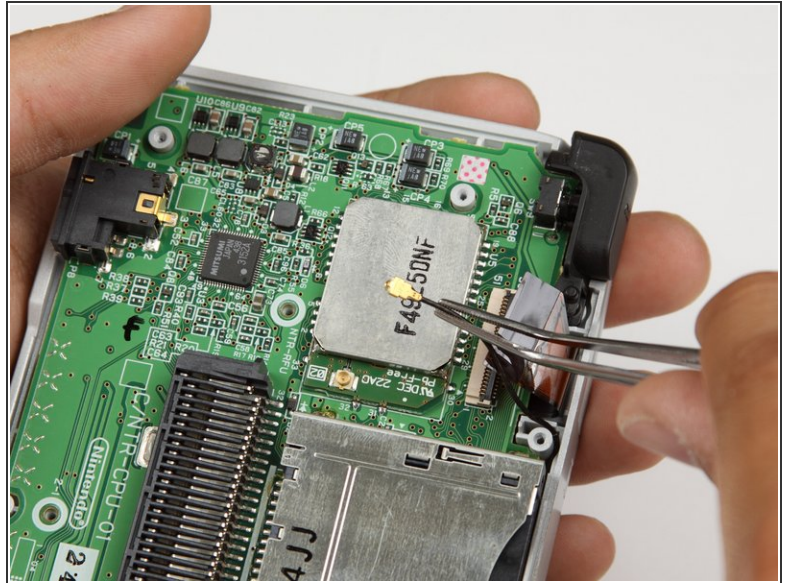
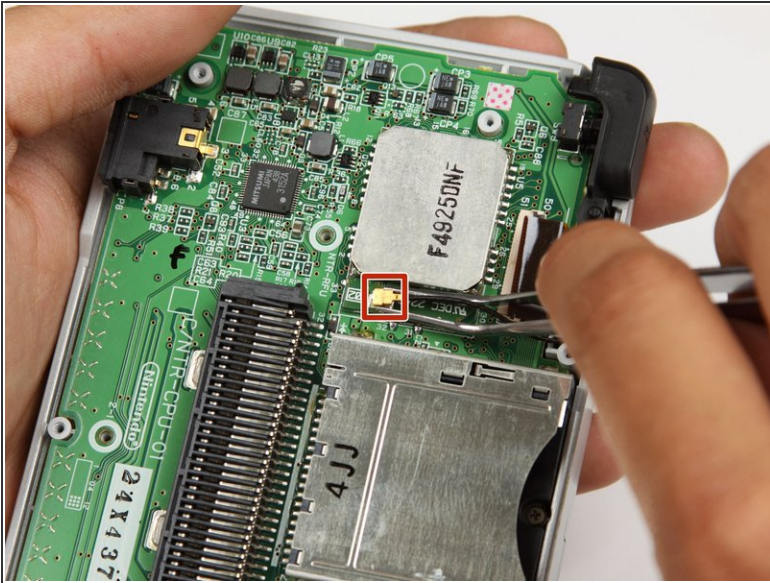
- Unlock the two large ribbon cables by moving the black clip up.
 - Carefully pull the ribbon cables down and out with your fingers.
- ⚠ Do not use pliers to pull the cables, as they can be damaged easily.

Step 8



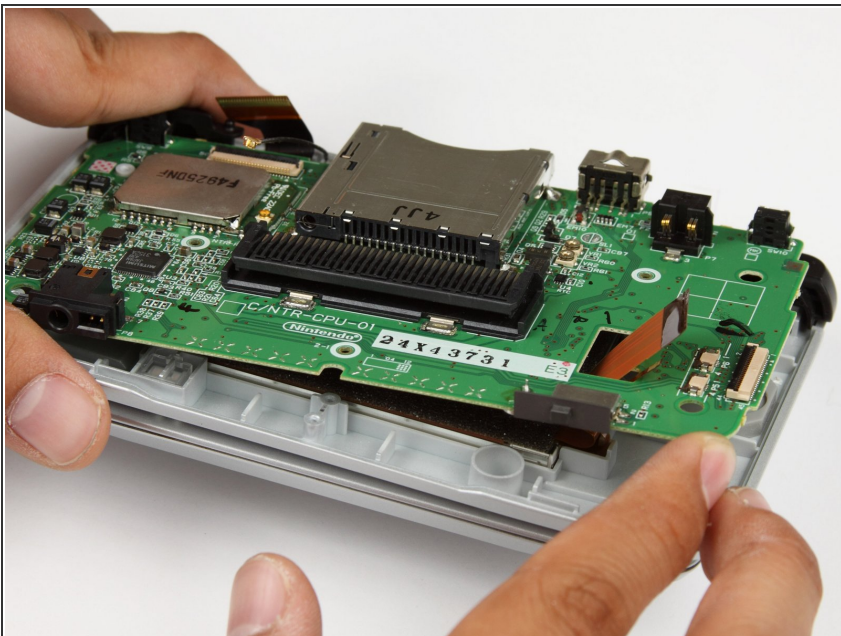
- Locate the two small ribbon cables, beneath the rightmost large ribbon cable.
 - Slide the locks for the small ribbon cables down to the side, and remove the cables.
- i** It may be useful to use tweezers to remove the small ribbon cables.
- !** Be careful not to damage the delicate ribbon cables.

Step 9



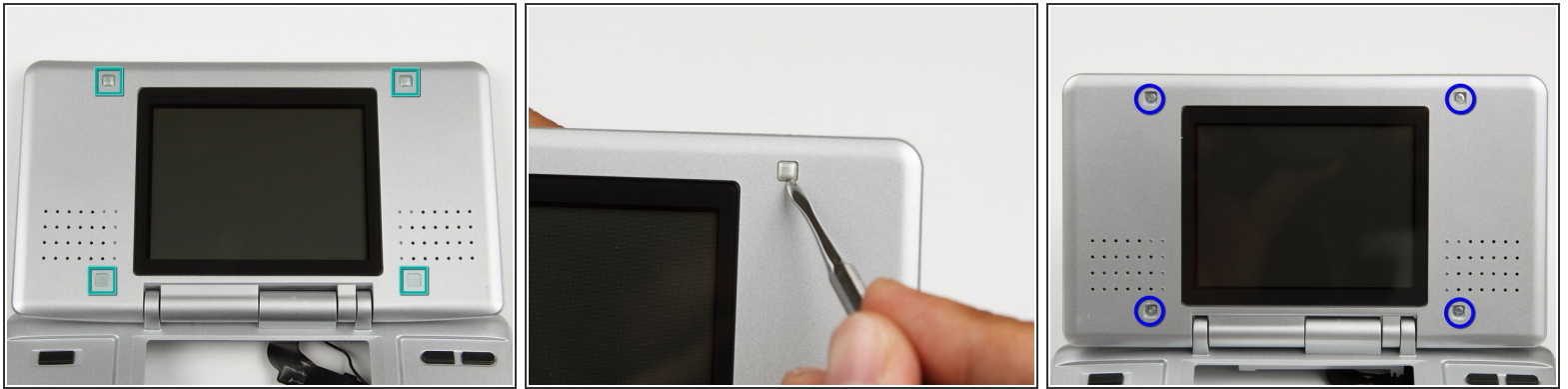
- Locate the Wifi antenna pigtail connector.
- Remove the antenna by grasping it at the head with tweezers. Using a slight rocking motion, pull up to dislodge the connector.

Step 10



- Feed the ribbon cables through the opening on the board.
- Pull up and remove the circuit board, and set it aside.

Step 11 — Top LCD Screen



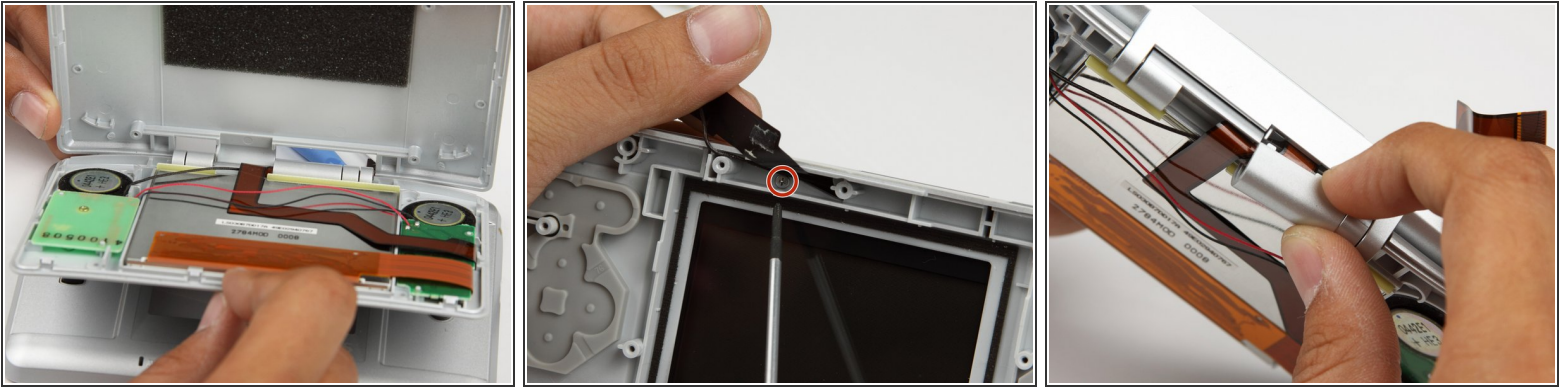
- Use a flathead screw driver or dental tool to remove rubber covers on screen.
- Then using a #00 screw driver remove the screws beneath.

Step 12



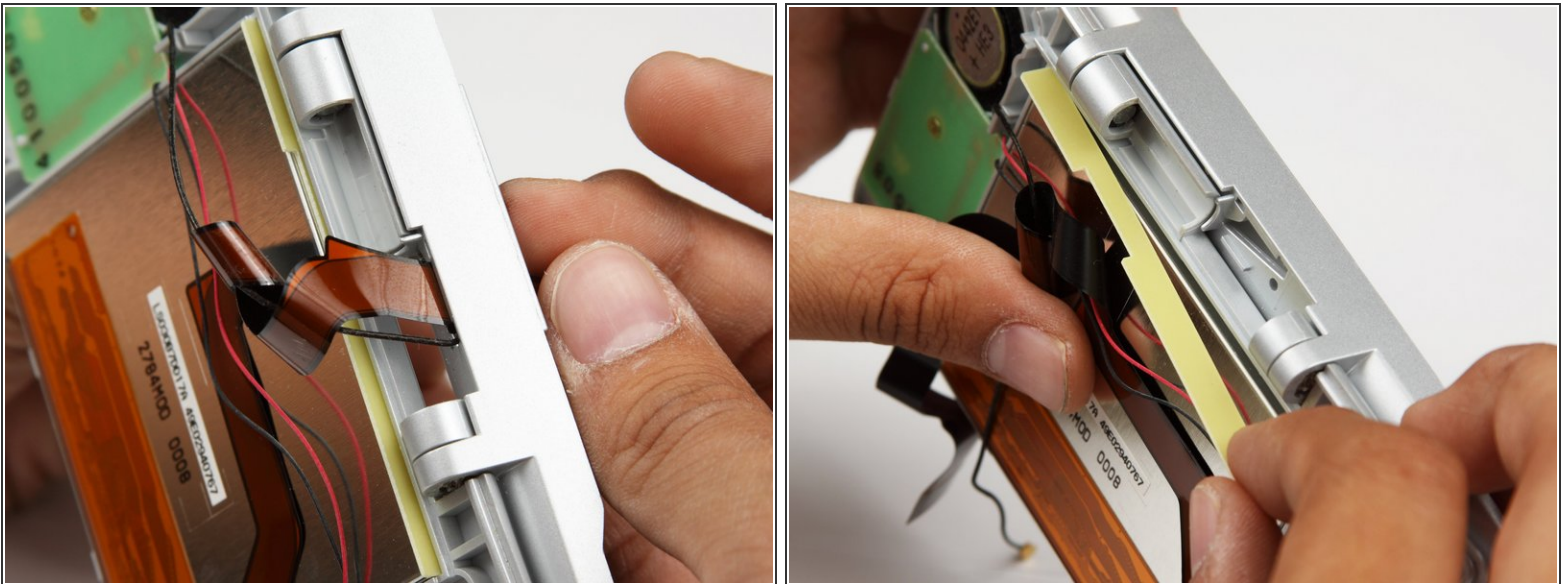
- Using a plastic opening tool, pry the edges of the plastic case apart at the seam.

Step 13



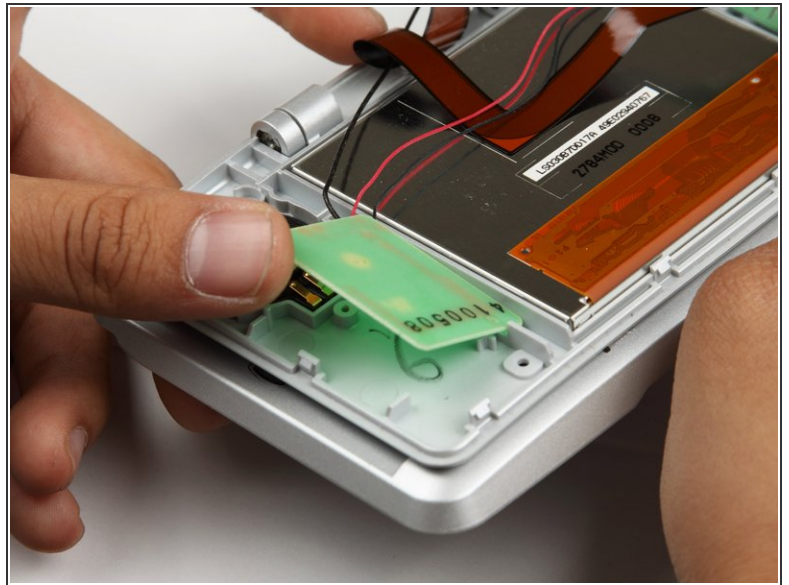
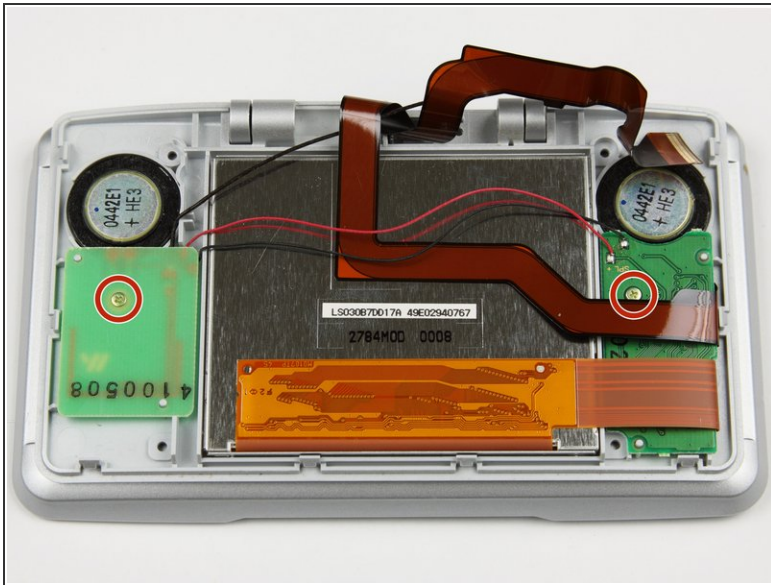
- Separate the top cover from the body.
- Using a Phillips #00 screwdriver, remove the screw holding the hinge cover in place.
- Remove the hinge cover and set it aside.

Step 14



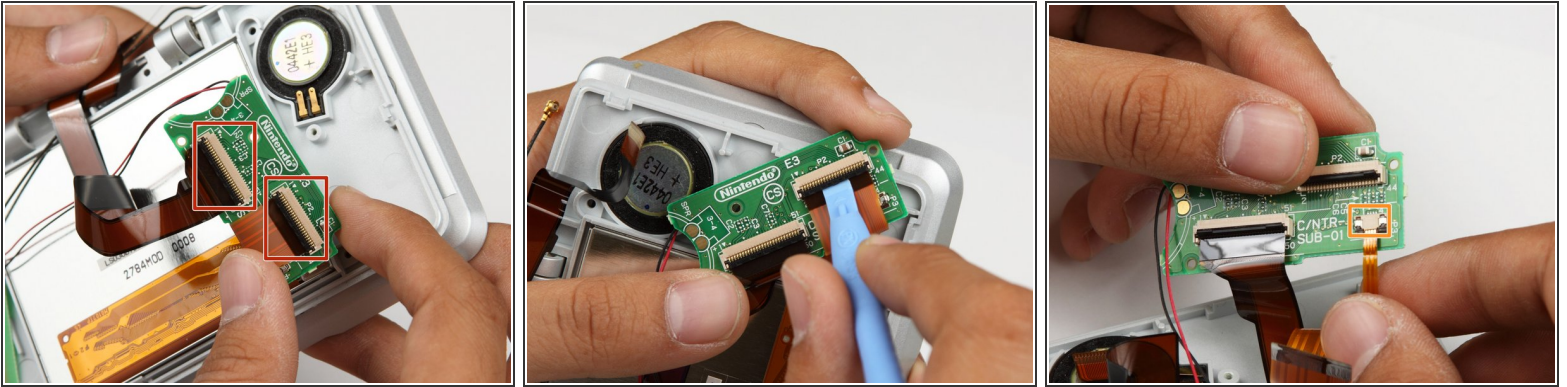
- Feed the ribbon cables and the Wifi pigtail cable through the opening in the hinge cover.
- Remove the yellow spacer, and set aside.

Step 15



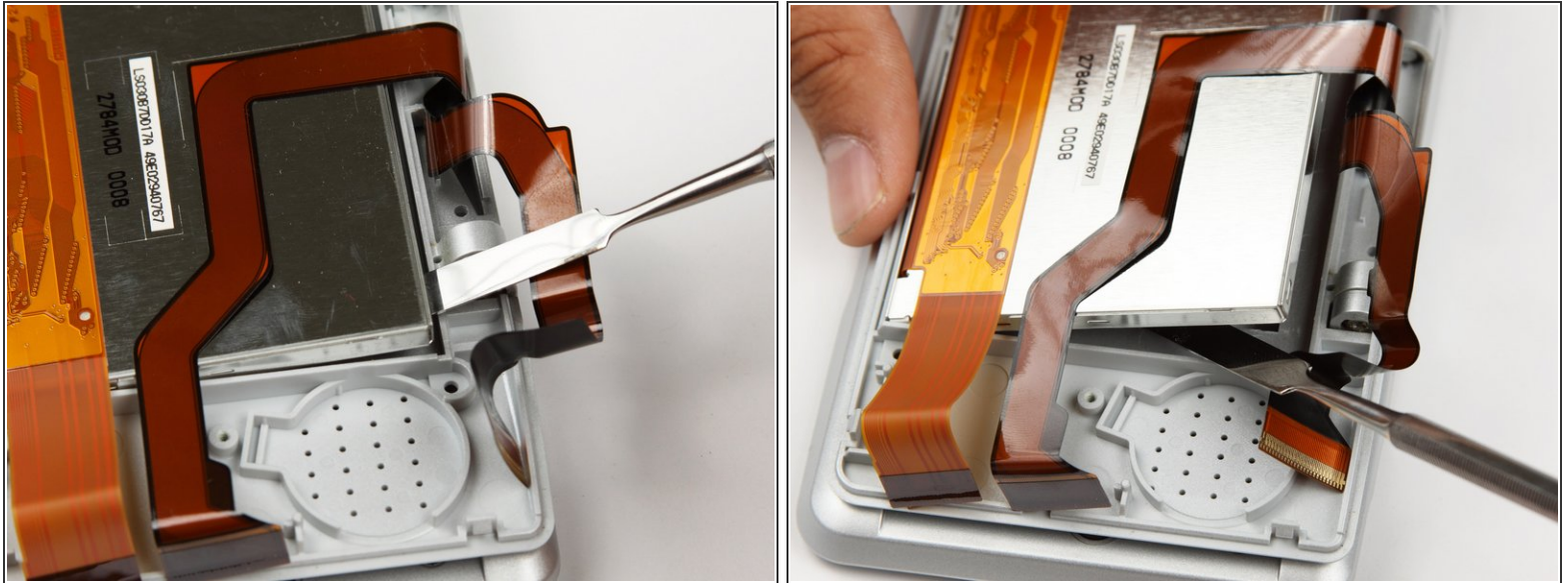
- Using a Phillips #00 screwdriver, remove the two screws holding down the speaker circuit boards.
 - Remove the two small circuit boards and set aside.
- ⚠ Be careful of the small red and black wires connecting the two circuit boards not to break them.

Step 16



- Move the black lock on the two large ribbon cables up with a pry tool, and gently pull out the two ribbon cables.
 - For the small ribbon cable, pull the lock downwards.
 - Gently pull out the small ribbon cable from the connector.
 - Set the two small circuit boards aside
- ⚠ Be careful not to damage the two delicate ribbon cables when removing them from the DS.

Step 17



- Using a pry tool, gently lift the top screen out of the shell.
- Set the top screen aside

To reassemble your device, follow these instructions in reverse order.