



# Nikon Coolpix A900 Battery Replacement

This guide will show you how to remove and replace the Nikon Coolpix A900 battery.

Written By: Andres Aronstam



## INTRODUCTION

As the Nikon Coolpix A900 camera is used, the battery will need to be taken out for either charging or replacement. When this time comes, this guide can be used to locate the battery and to help with the removal process.

## Step 1 — Battery



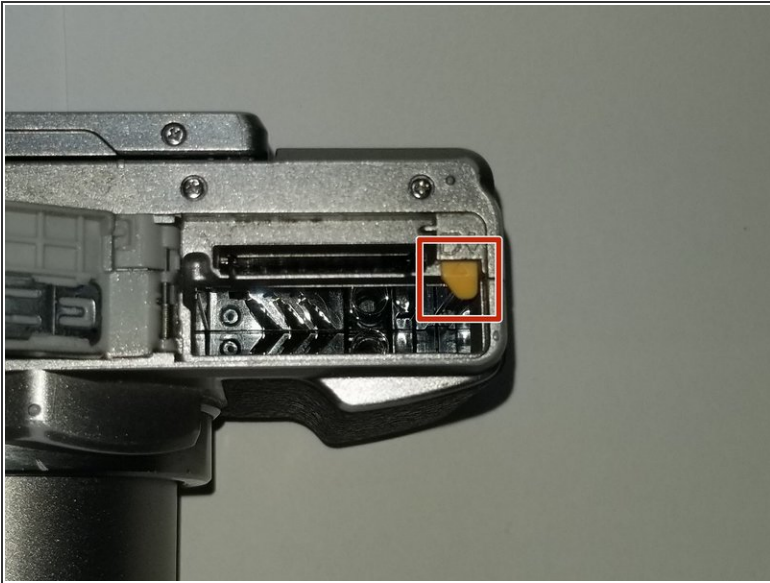
- Orient the camera so that it is upside down, with the lens facing towards you.

## Step 2



- Slide the battery door lock left to unlock it.
- The battery door will automatically open.

### Step 3



- Slide the yellow tab up to release the battery.
- ☞ To re-insert a battery, slide the battery back in until the yellow tab locks it in place.
- ⓘ There is a diagram on the opposite side of the battery compartment to help you orient the battery correctly.

To reassemble your device, follow these instructions in reverse order.