



# Motorola Moto X4 Front-facing Camera Replacement

This guide will help the user to remove and replace the front view camera, meaning the camera that faces the user.

Written By: Brian Buchanan



## INTRODUCTION

Follow this guide to remove and replace the front-facing camera for the Moto X4. In order to access the camera, you must remove the motherboard.

---

### TOOLS:

- [Suction Handle](#) (1)
- [iFixit Opening Tools](#) (1)
- [T3 Torx Screwdriver](#) (1)
- [iFixit Opening Picks set of 6](#) (1)
- [iOpener](#) (1)
- [Spudger](#) (1)
- [T4 Torx Screwdriver](#) (1)
- [Tweezers](#) (1)

### PARTS:

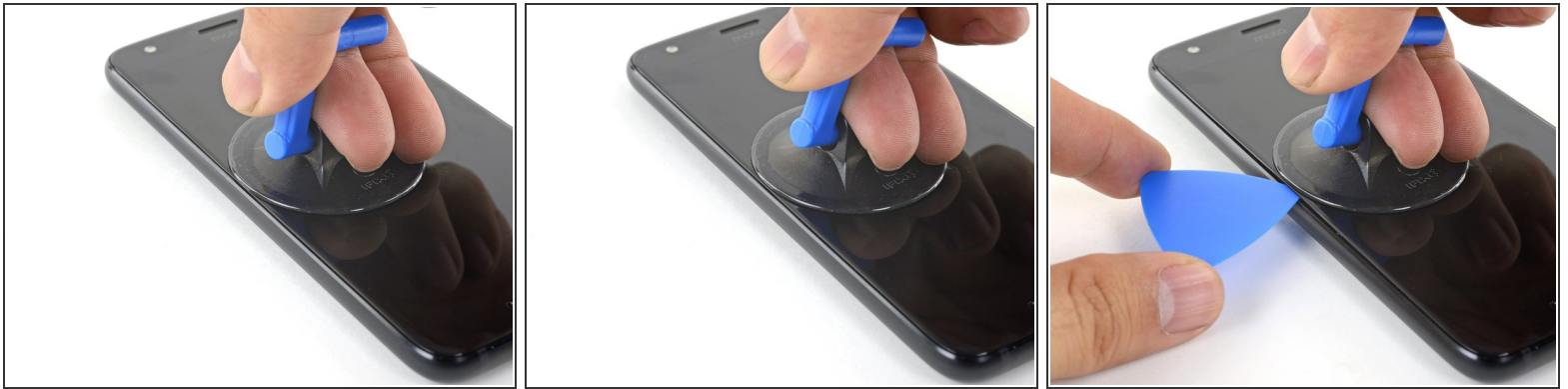
- [Moto X4 Display Adhesive](#) (2)

## Step 1 — Heat the screen



- ⓘ Before you begin, turn off your phone.
- [Heat an iOpener](#) and apply it to the left edge of the phone for two minutes.
- ⓘ You may need to reheat and reapply the iOpener several times to get the phone warm enough. Follow the iOpener instructions to avoid overheating.
- ⓘ A hair dryer, heat gun, or hot plate may also be used, but be careful not to overheat the phone—the display and internal battery are both susceptible to heat damage.
- As you wait, take note of the the following areas:
  - Display cable—be careful not to slice too deeply near the edge here, or you may damage the display cable.
  - Fingerprint sensor cable—be careful not to slice too deeply near the edge here, or you may damage the fingerprint sensor cable.

## Step 2 — Create a gap



- Apply a suction cup to the screen, as close to the heated edge as possible.
  - Pull on the suction cup with strong, steady force to create a gap in the seam.
  - Insert the point of an opening pick into the gap.
- i** Depending on the age of your phone, this may be difficult. If you are having trouble, apply heat to the edge and try again.

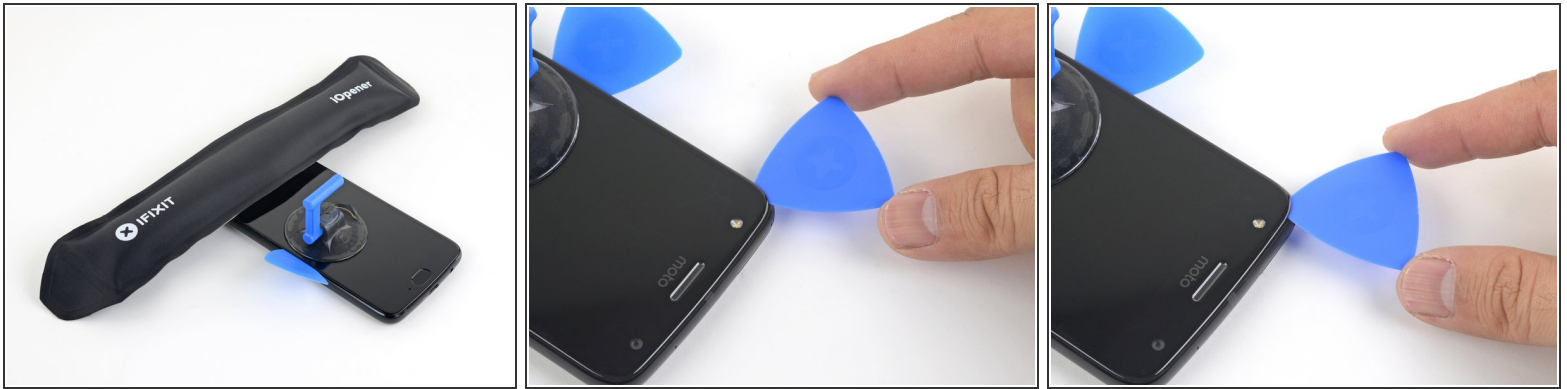
## Step 3 — Slice the screen adhesive



- Slide the opening pick along the edge to slice through the adhesive.
- Leave an opening pick in the seam to prevent the adhesive from re-sealing.



## Step 4



- Heat the top edge of the phone with an iOpener.
- Carefully slice around the corner and through the top edge to separate the adhesive.

## Step 5



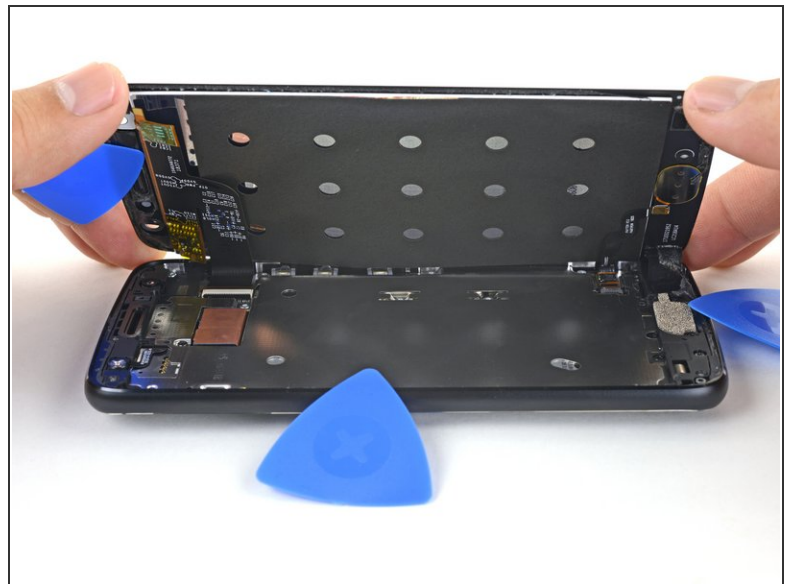
- Heat the screen's right edge with an iOpener.
- Be careful not to slice too deeply near the cables to avoid damaging them.
- Use an opening pick to slice along the right edge to separate the adhesive.

## Step 6



- Repeat the previous steps to heat and slice the bottom edge of the phone.

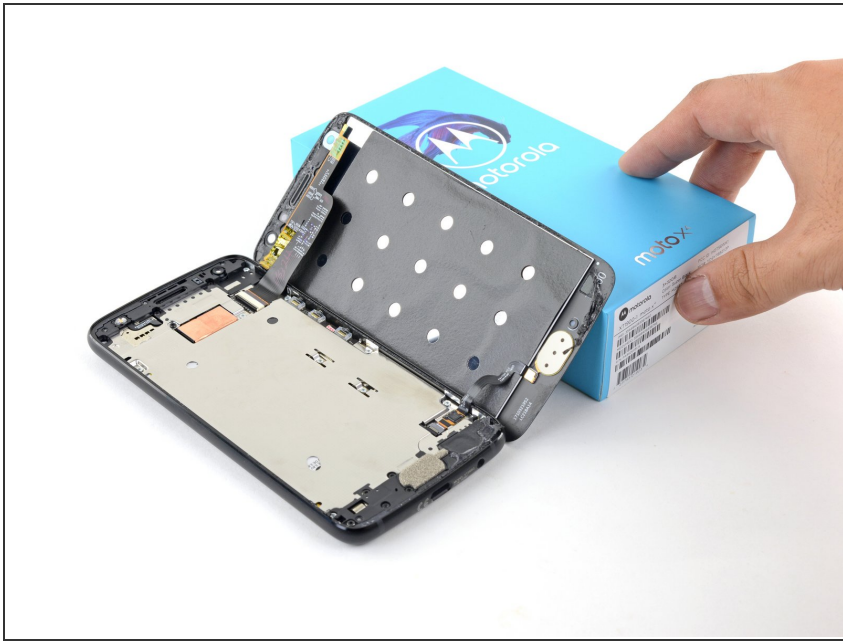
## Step 7



**⚠** Do not try to remove the screen yet—it is still attached to the phone by delicate flex cables.

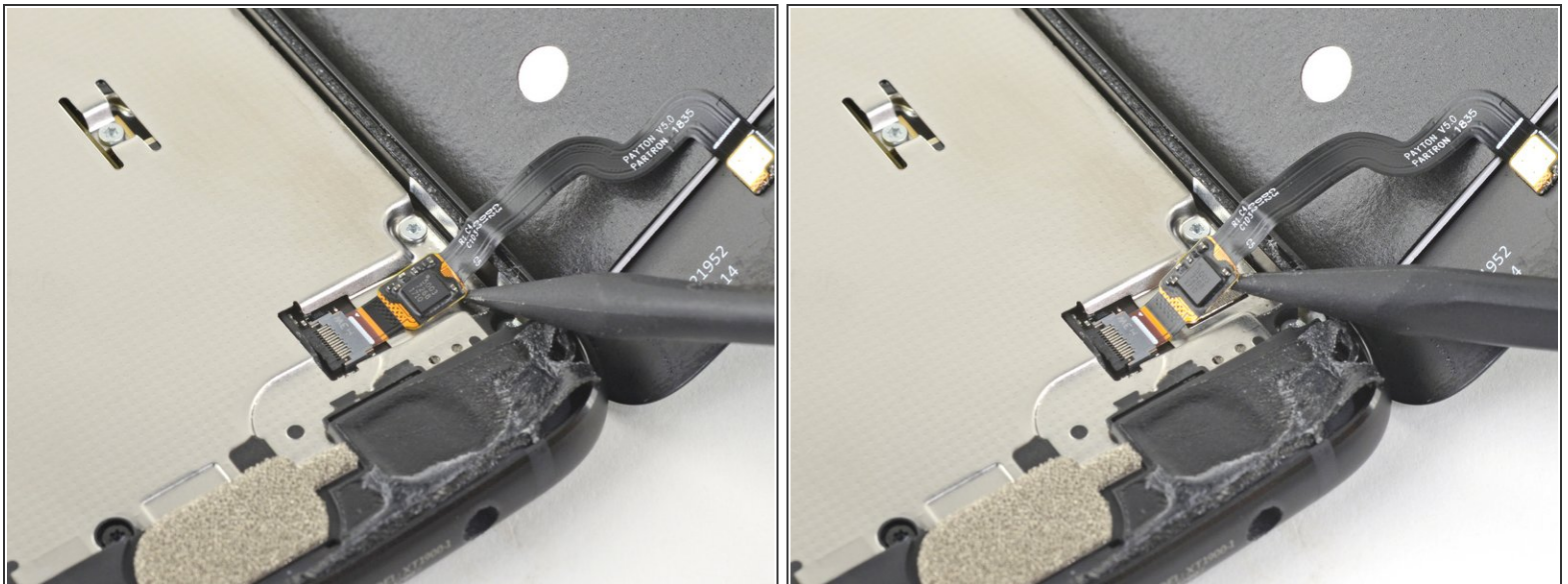
- Carefully lift up the left edge of the screen and cut away remaining adhesives with an opening pick.

## Step 8



- Swing open the screen and prop it up with a small box as you work on disconnecting the flex cables.
- ☑ During reassembly, this is a good time to power on your phone and test all functions before sealing it up. Be sure to power your phone back down completely before you continue working.

## Step 9 — Detach the fingerprint sensor cable



- Slide the point of a spudger underneath the fingerprint sensor cable and gently pry up to loosen the cable from the phone.

⚠ Do not pull on the cable. It is still attached to the phone by a delicate ZIF socket.

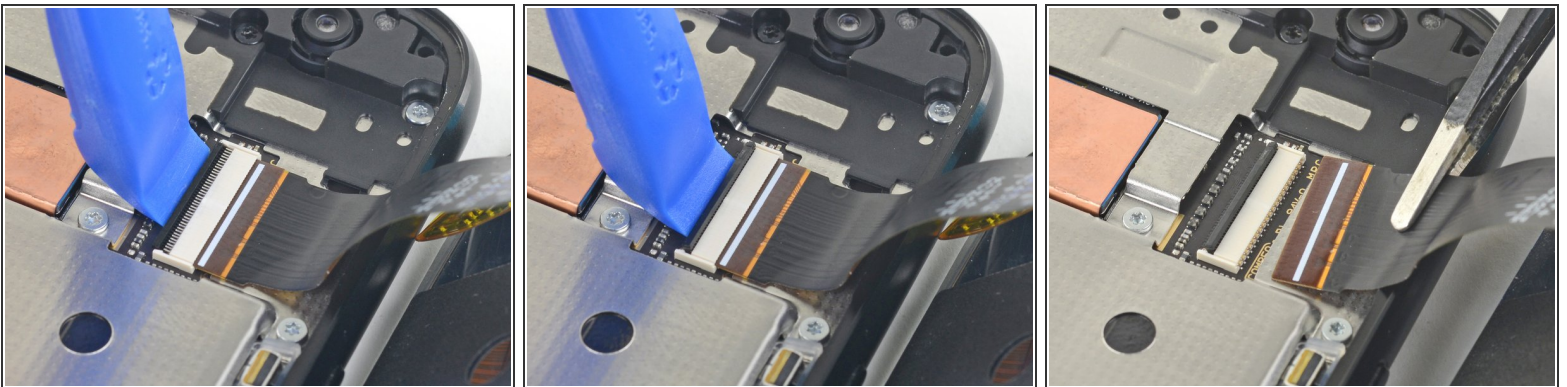


## Step 10 — Disconnect the fingerprint sensor



- Use the point of a spudger to flip up the lock bar on the fingerprint sensor's ZIF socket, near the bottom right of the phone.
- Use tweezers to carefully slide the fingerprint sensor cable out of the socket.

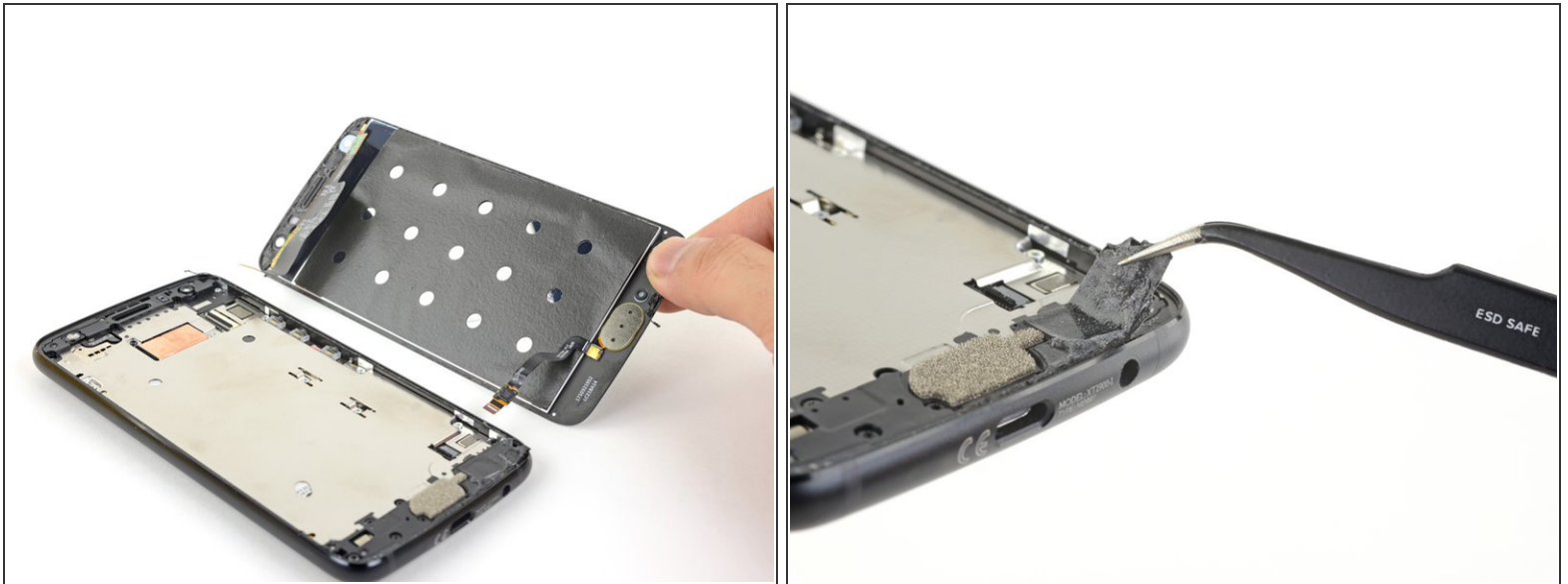
## Step 11 — Disconnect the display cable



- Use an opening tool to flip up the wide lock bar on the display cable's ZIF socket, near the top right of the phone.
- Use tweezers to carefully slide the display cable out of the ZIF socket.

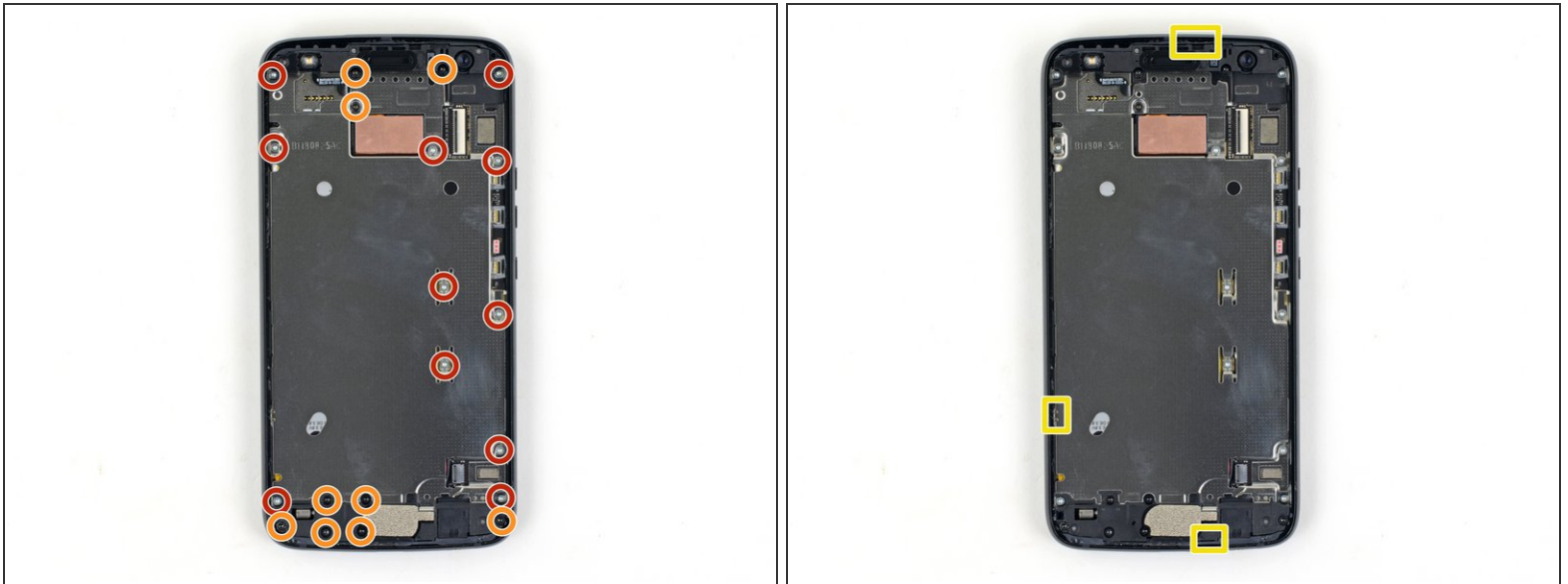


## Step 12 — Remove the screen



- Remove the screen.
- During reassembly, [follow this guide](#) to install custom-cut adhesives for your phone.

## Step 13 — Unscrew the midframe



- Remove the following twenty screws securing the midframe:
  - Eleven silver 2.7 mm-long T3 screws
  - Nine black 3.6 mm-long T4 screws
- The midframe is still held in place by clips.

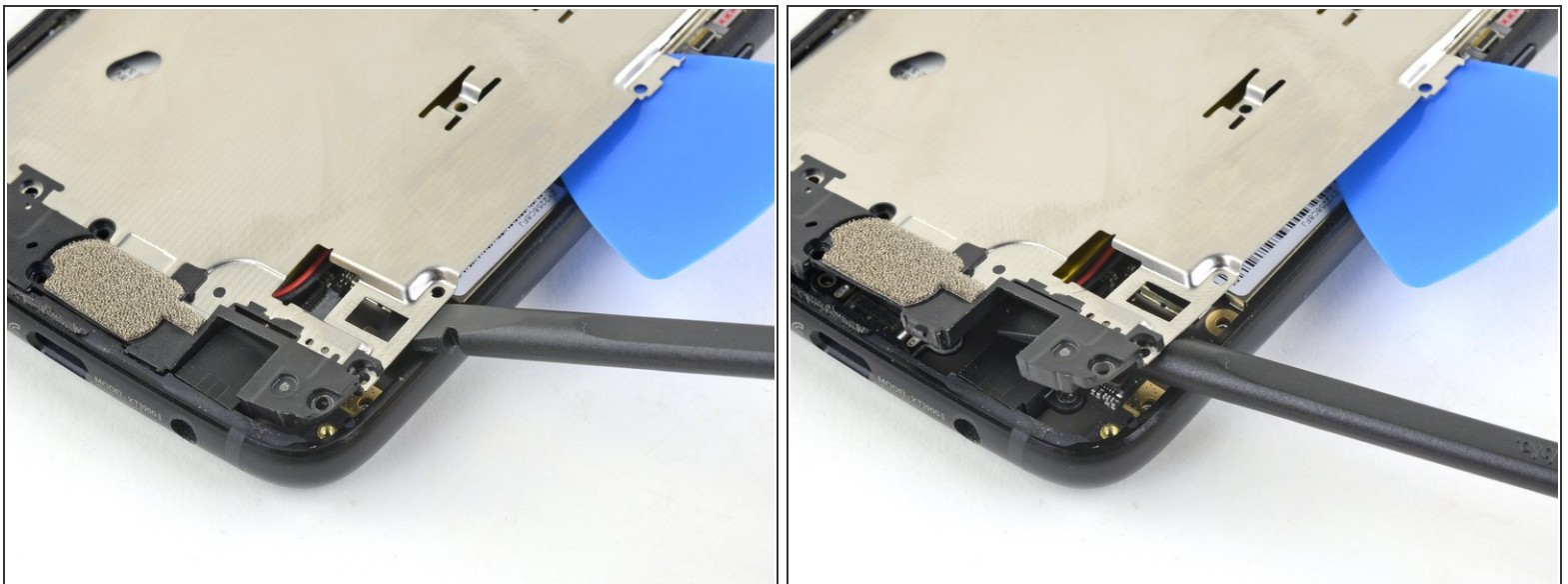
## Step 14 — Loosen the midframe



**i** The next few steps show how to loosen the midframe clips.

- Insert the flat end of a spudger under the right edge of the metal midframe and pry up to loosen the midframe.
- Insert an opening pick in the edge to hold the midframe in place.

## Step 15



- Insert the flat end of a spudger under the lower right edge of the midframe and pry up to release the midframe clip.

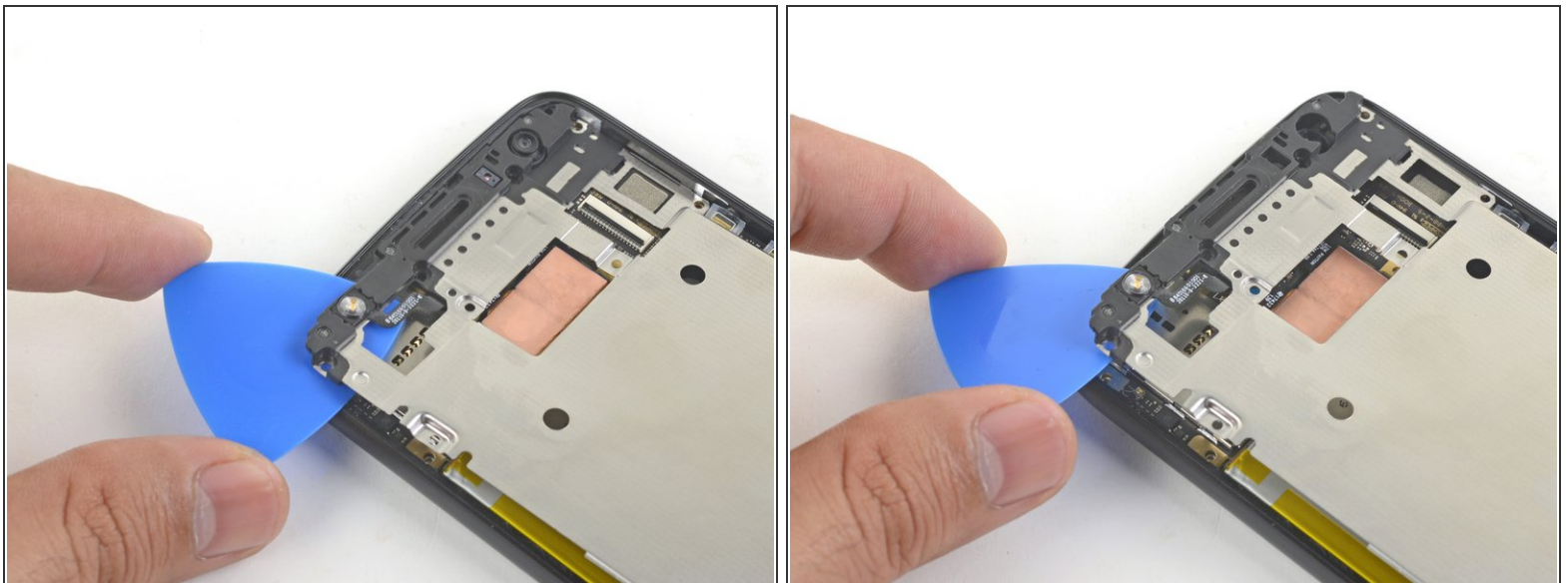


## Step 16



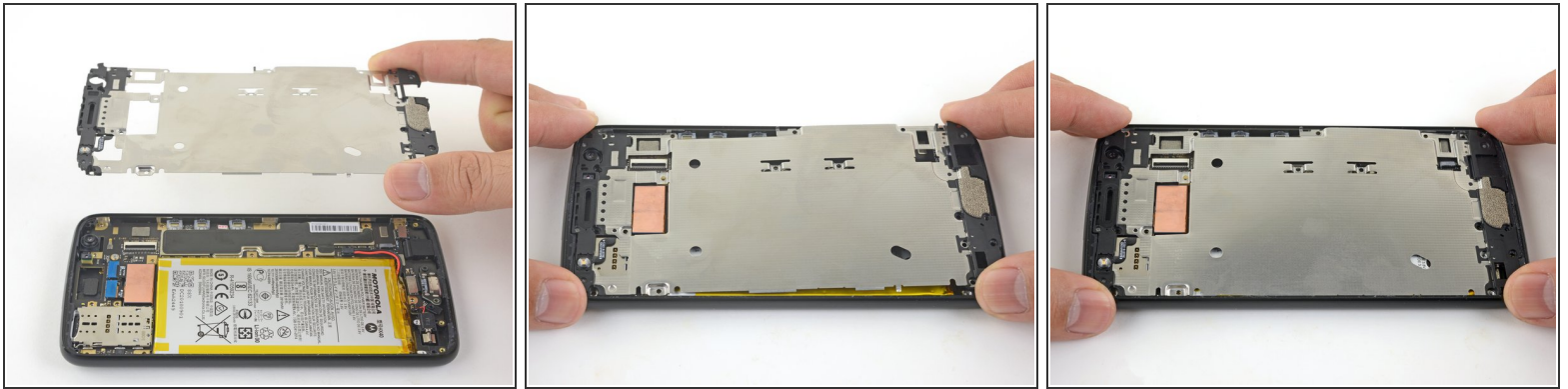
- Grasp the lower edge of the midframe and pull the edge slightly to the right, to clear the metal midframe clip.

## Step 17



- Insert the point of an opening pick under the top left corner of the midframe and twist slightly to release the top clip.

## Step 18 — Remove the midframe



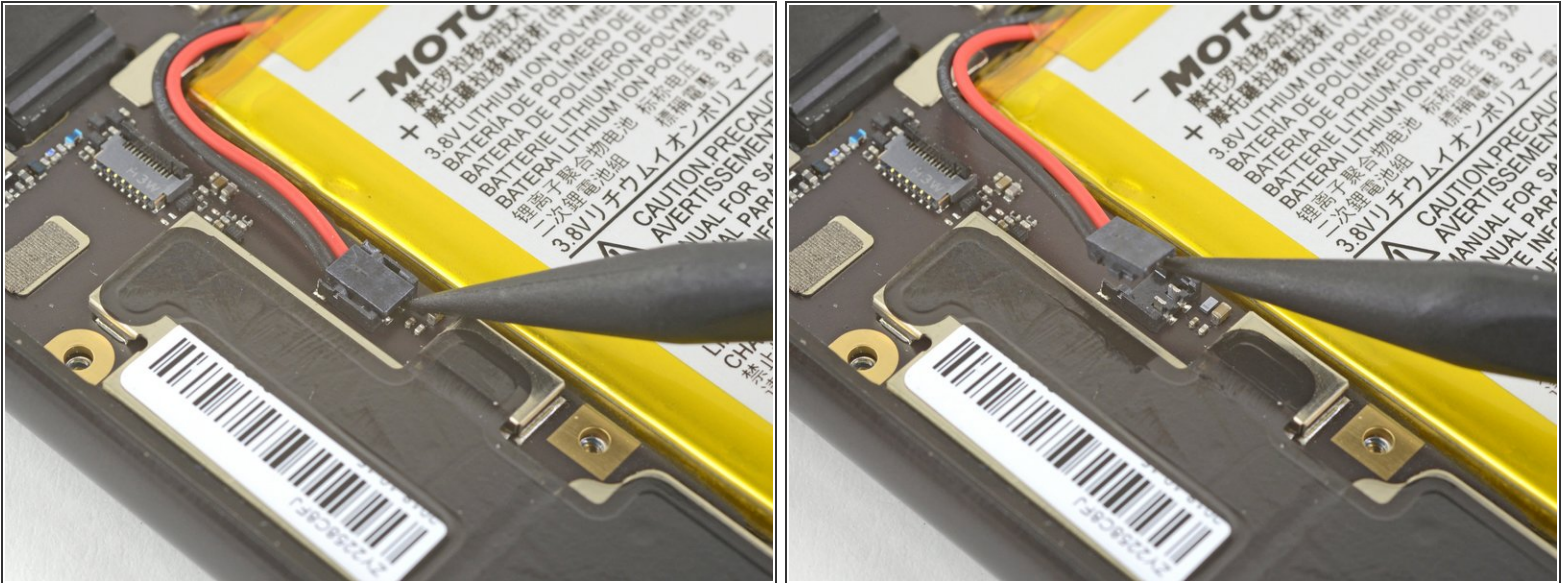
- Remove the midframe.

### To reinstall the midframe:

- Align the the midframe's top edge to the phone and press it into position.
- Shift the bottom edge slightly to the left, to maneuver the [left metal midframe clip](#) underneath the phone edge.
- Press the midframe's bottom edge into position.

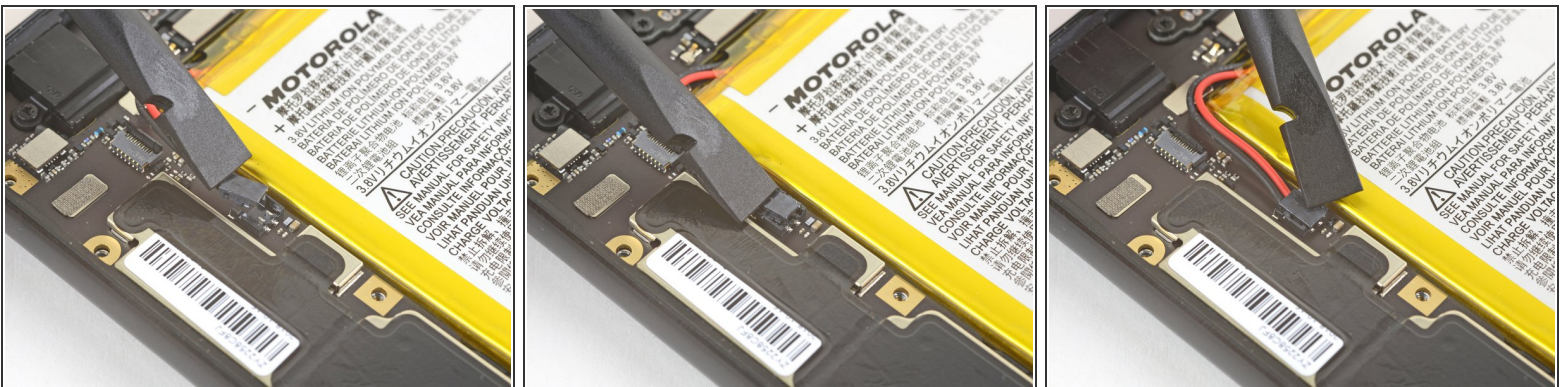


## Step 19 — Disconnect the battery



- Insert the point of a spudger underneath the top edge of the battery connector.
- ⚠ Be careful not to dislodge the small surface-mounted components surrounding the socket.
- Gently pry up the connector to disconnect the battery.

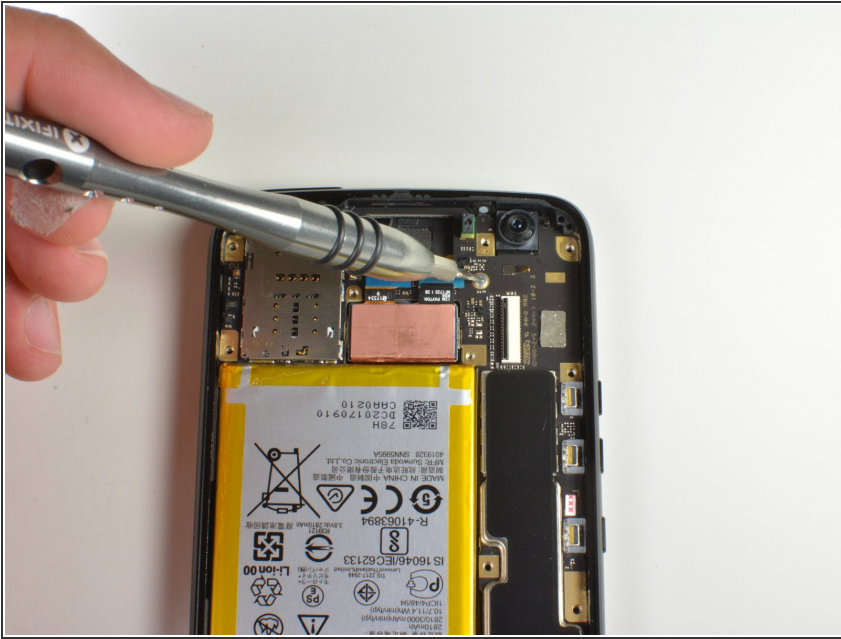
## Step 20



- ☞ To re-connect the battery, align the connector on top of the socket, and press it down with your finger or a spudger.



## Step 21 — Motherboard



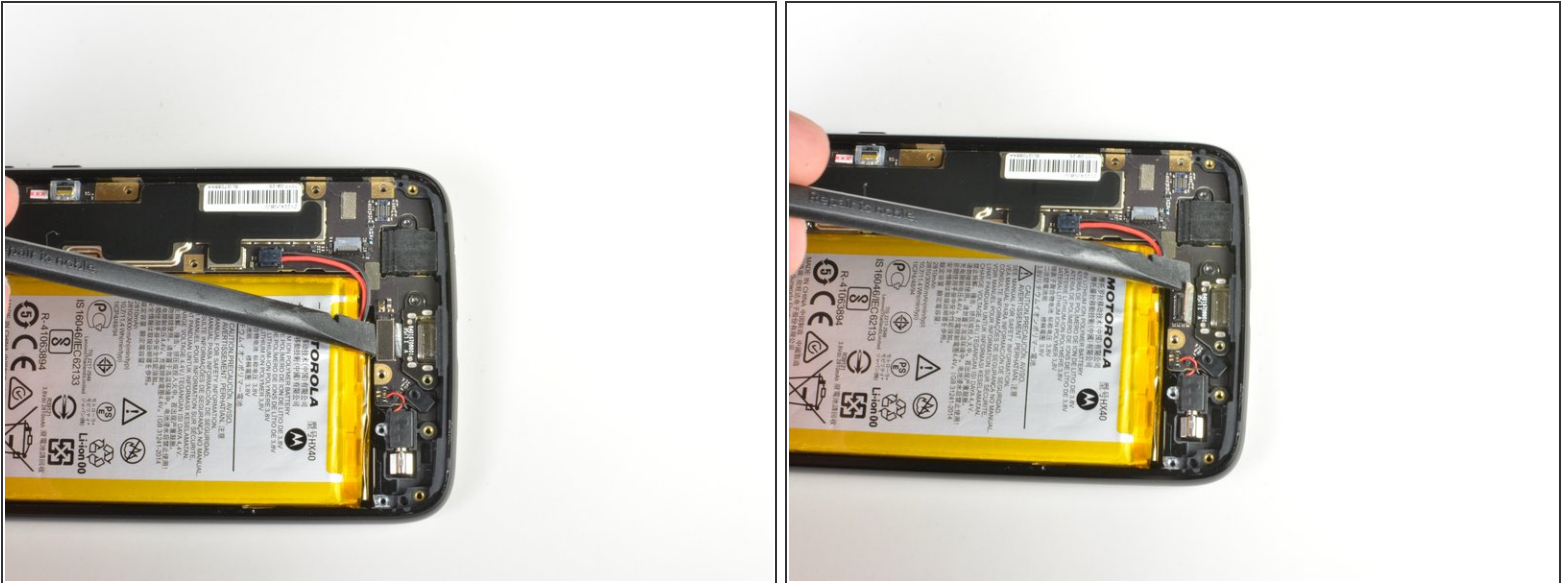
- Remove the T3 screw that is holding in the motherboard.

## Step 22



- Use flat edge of the spudger to pry up the two blue connectors near the top of the device.

## Step 23



- Use flat side of spudger to pry up connector near the bottom of the device.

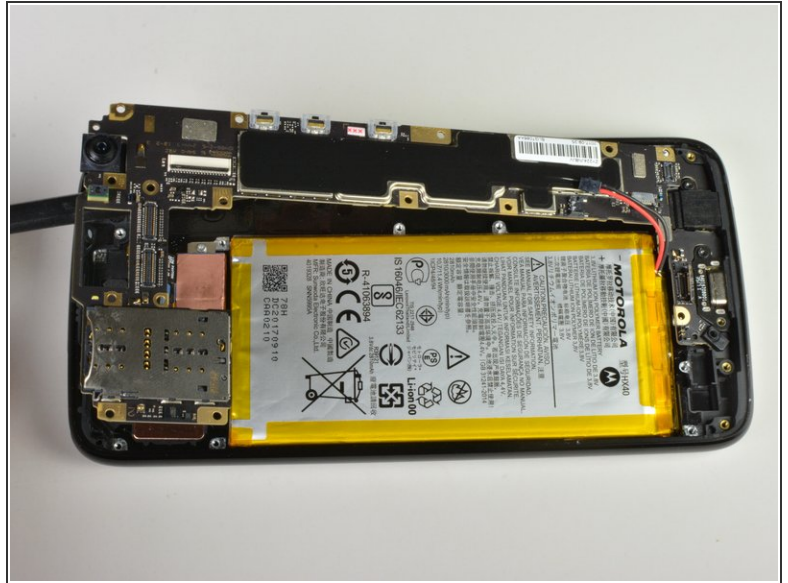
## Step 24



- Using a pair of tweezers disconnect the vibrating motors connector near the bottom of the device.

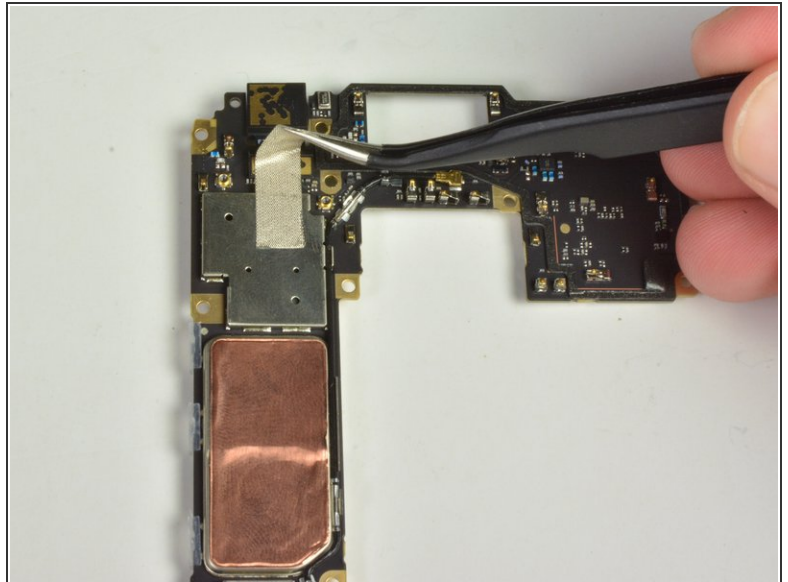
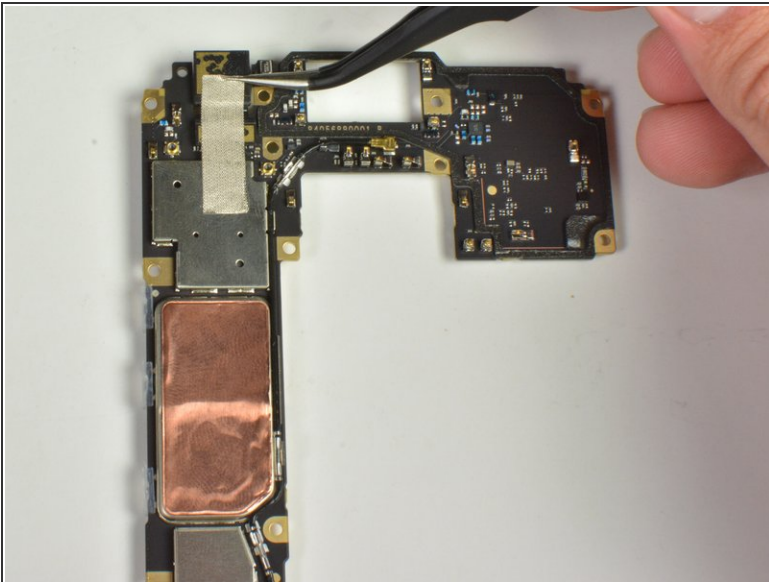


## Step 25



- Carefully pry up the motherboard using the spudger.
- ⓘ The previously disconnected wires may have to be held back in order to easily remove the motherboard.

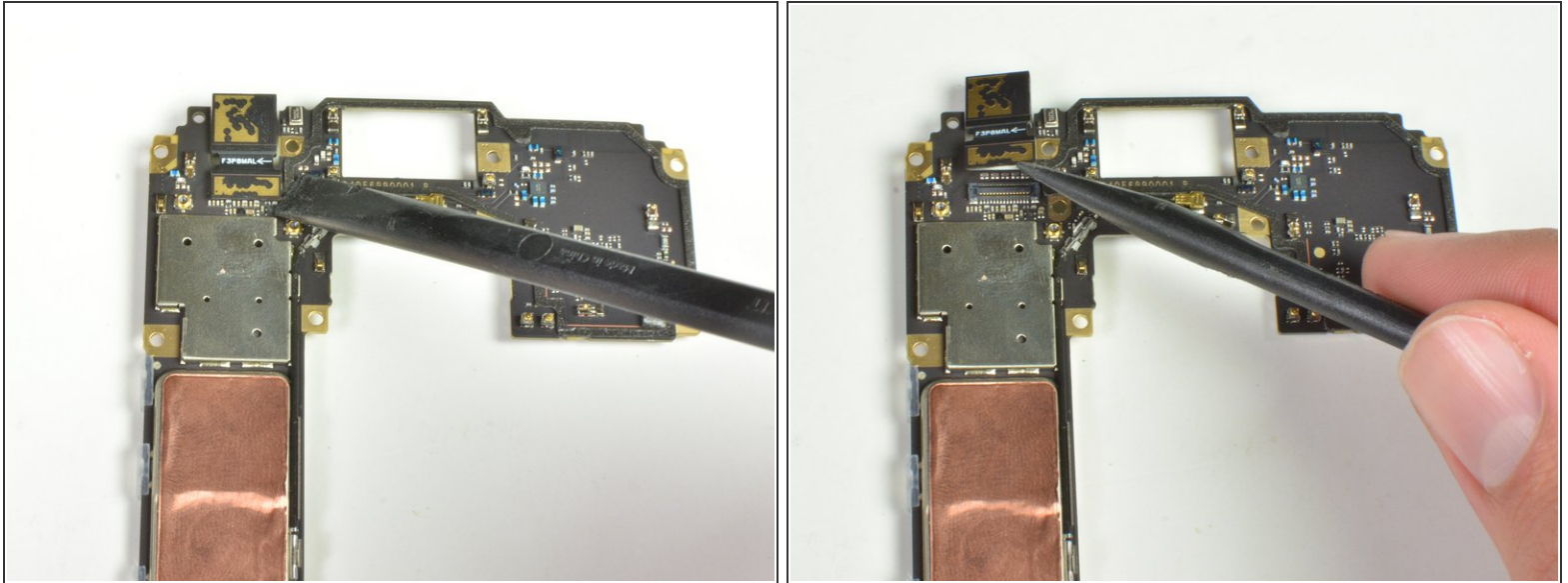
## Step 26 — Front Facing Camera



- Now carefully peel off the tape on the back of the camera with tweezers.



## Step 27



- Now use the flat edge of a spudger to carefully disconnect the camera from the motherboard.

To reassemble your device, follow these instructions in reverse order.

Take your e-waste to an [R2 or e-Stewards certified recycler](#).

Repair didn't go as planned? Try some [basic troubleshooting](#), or ask our [Motorola Moto X4 Answers community](#) for help.