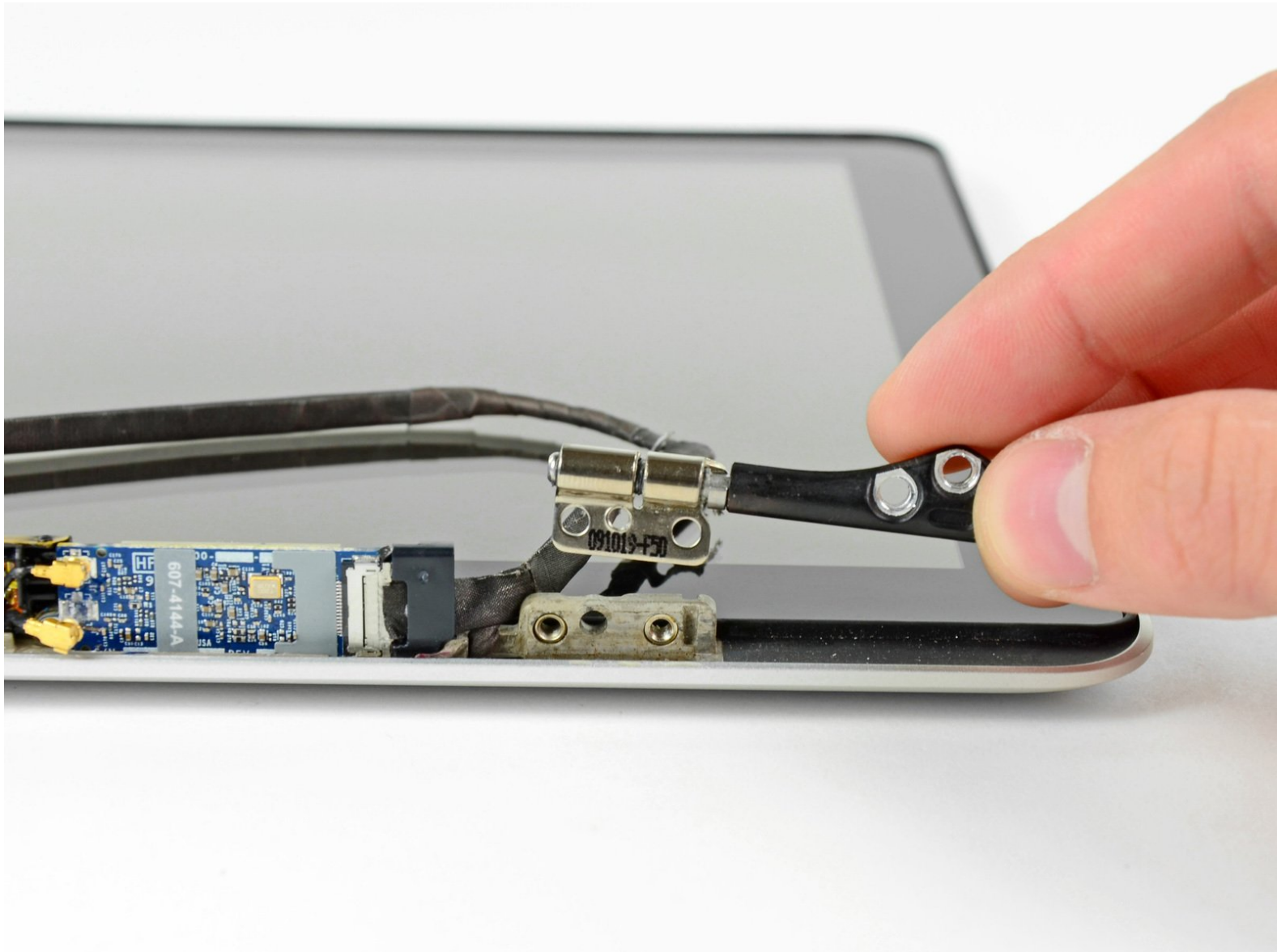




MacBook Unibody Model A1278 Right Clutch Hinge Replacement

Replace the right clutch hinge in your MacBook Unibody Model A1278.

Written By: Walter Galan



INTRODUCTION

Use this guide to replace a broken right clutch hinge.

TOOLS:

- [Heat Gun](#) (1)
- [Heavy-Duty Suction Cups \(Pair\)](#) (1)
- [Phillips #00 Screwdriver](#) (1)
- [Spudger](#) (1)
- [T6 Torx Screwdriver](#) (1)

PARTS:

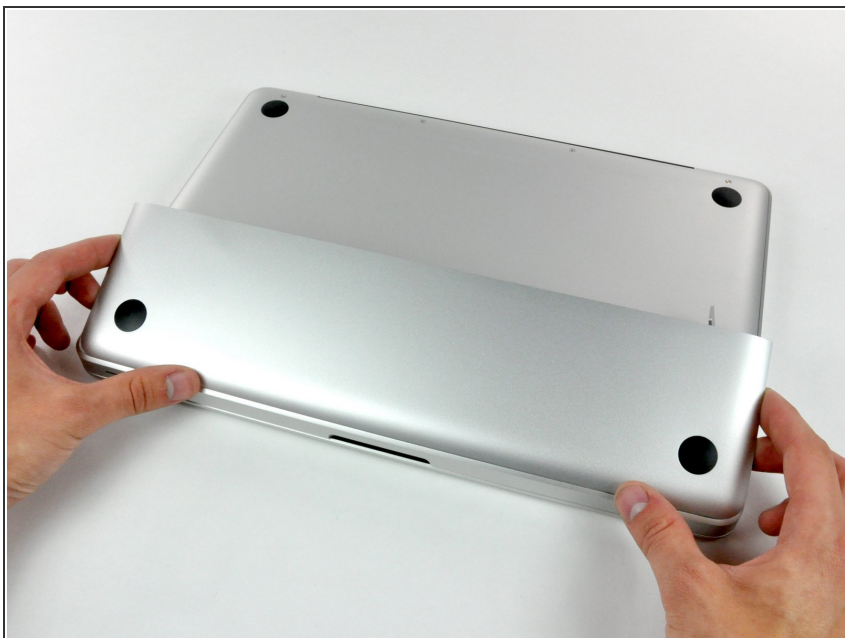
- [MacBook Unibody \(Model No. A1278\) Right Clutch Hinge](#) (1)

Step 1 — Access Door



- With the case closed, place the Unibody top-side down on a flat surface.
- Depress the grooved side of the access door release latch enough to grab the free end. Lift the release latch until it is vertical.

Step 2



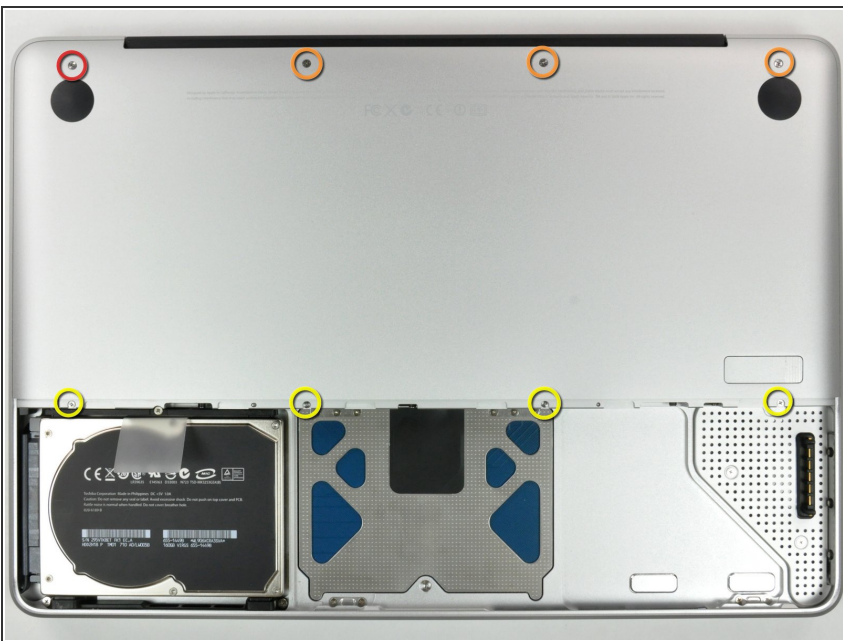
- The access door should now be raised enough to lift it up and out of the Unibody.

Step 3 — Battery



- ⓘ Be sure the access door release latch is vertical before proceeding.
- Grab the white plastic tab and pull the battery up and out of the Unibody.

Step 4 — Lower Case



- Remove the following eight screws securing the lower case to the chassis:
 - One 3 mm Phillips screw.
 - Three 13.5 mm Phillips screws.
 - Four 3.5 mm Phillips screws.

Step 5



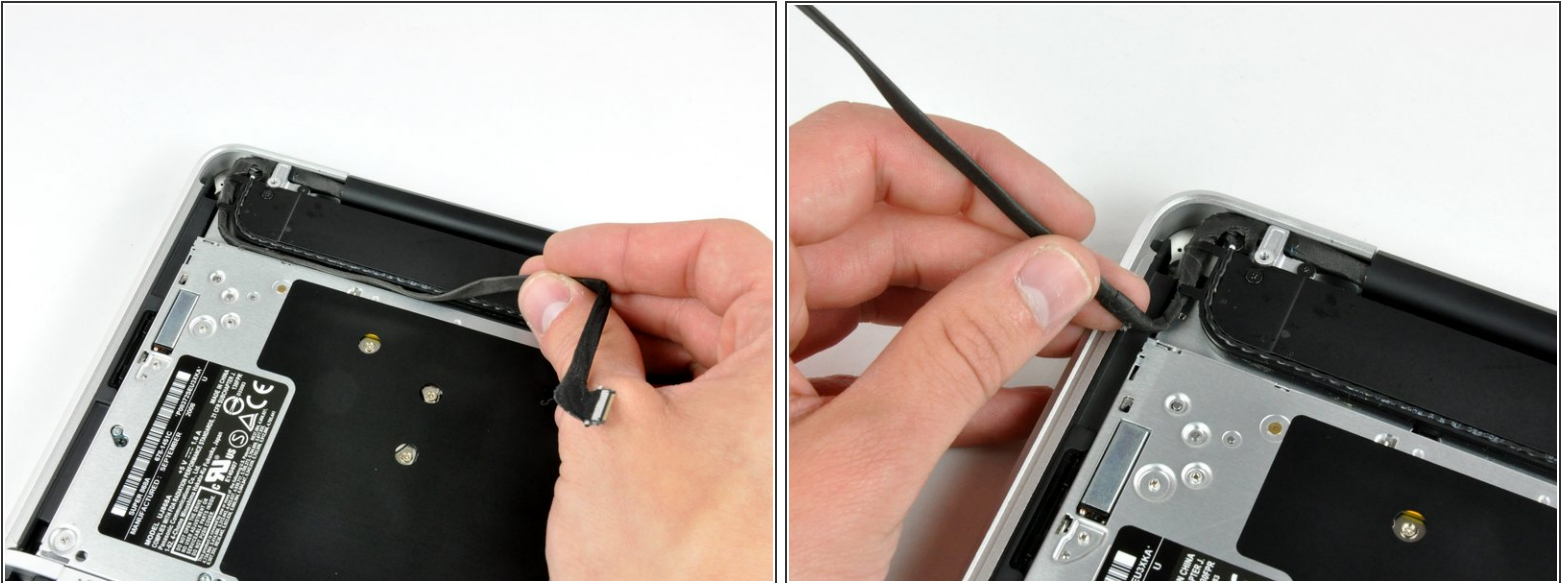
- Using both hands, lift and remove the lower case off the upper case.

Step 6 — Display Assembly



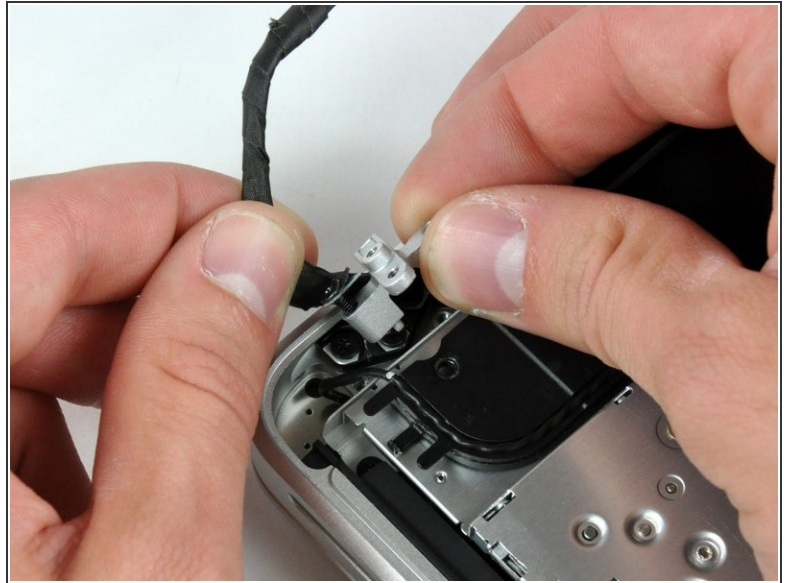
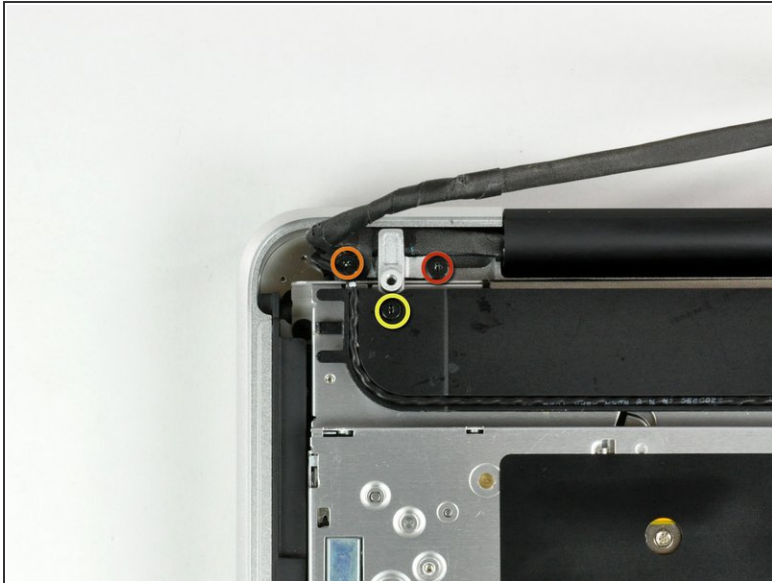
- Disconnect the camera cable by pulling the male end straight away from its socket.
- ⚠ Be careful not to pull up on the cable as you remove it from the socket.

Step 7



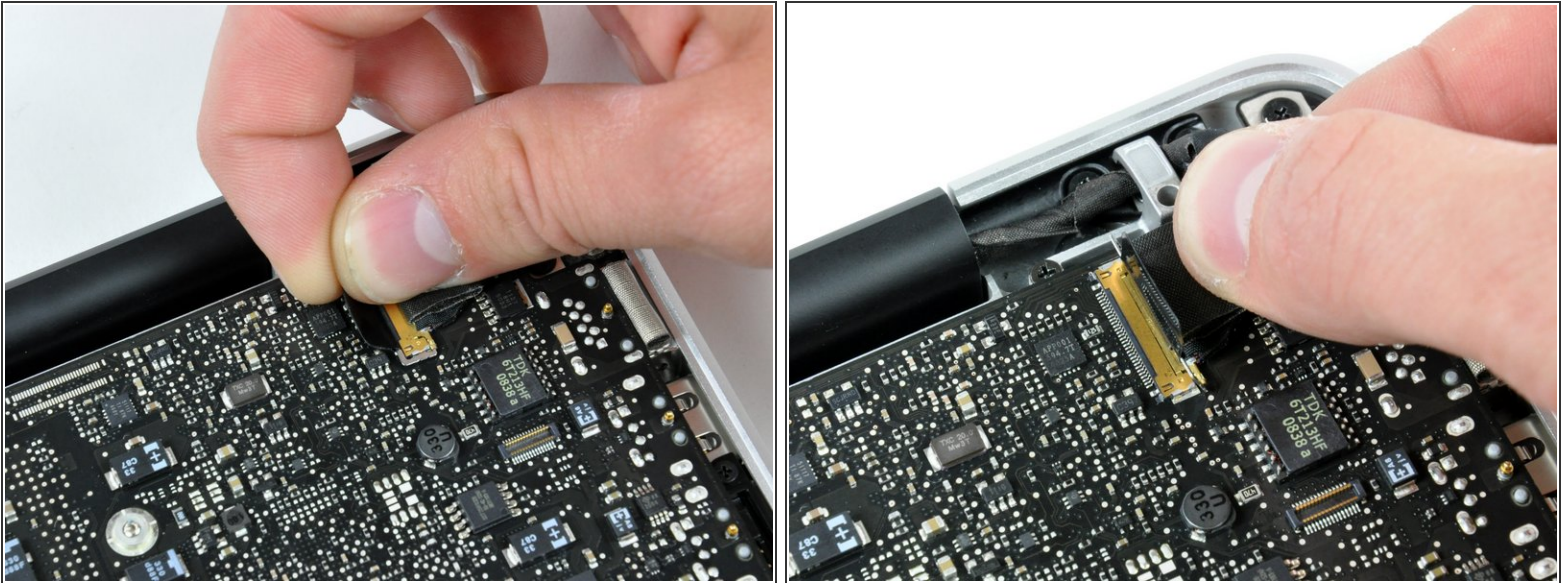
- De-route the camera data cable from the channel in the optical drive.

Step 8



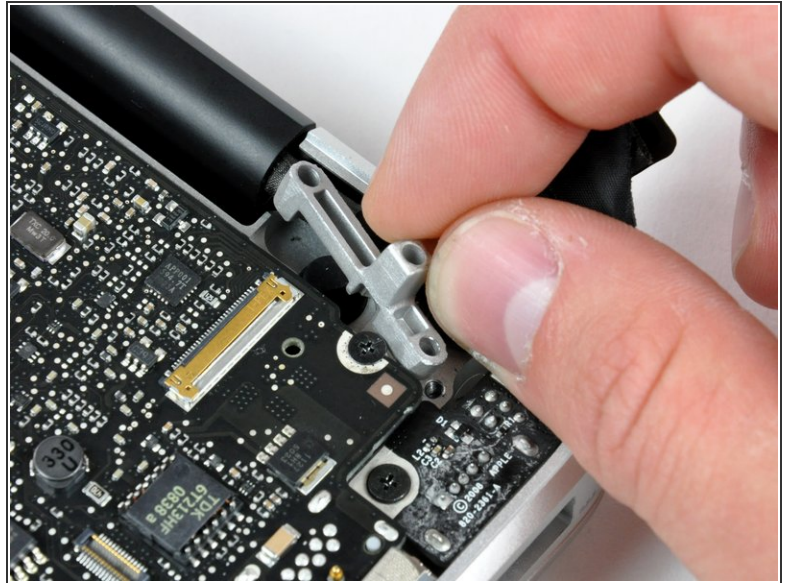
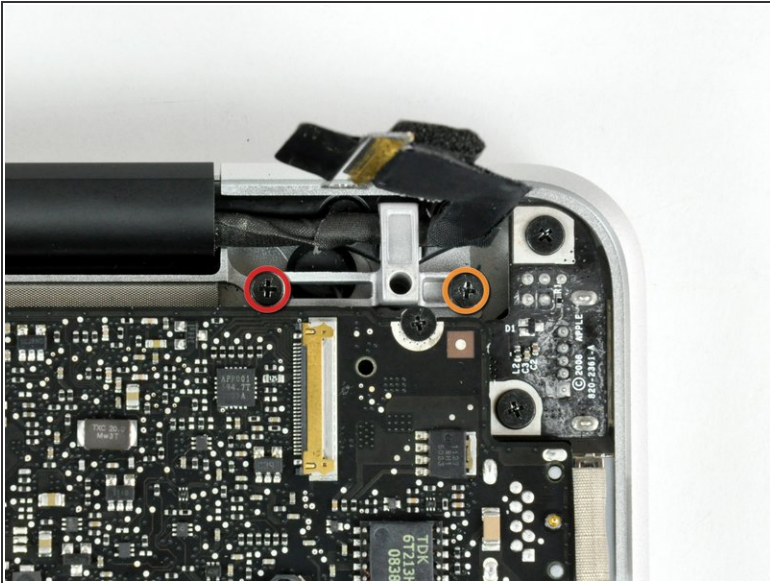
- Remove the following screws securing the camera data cable and right speaker to the upper case:
 - One 9.9 mm partially threaded Phillips screw
 - One 9.6 mm threaded Phillips screw
 - One 4 mm Phillips screw
- Slide the camera cable bracket out from under the subwoofer and remove it from the computer.
- ⓘ The iSight cable has an eyelet through which passes the left-most screw in these pictures.

Step 9



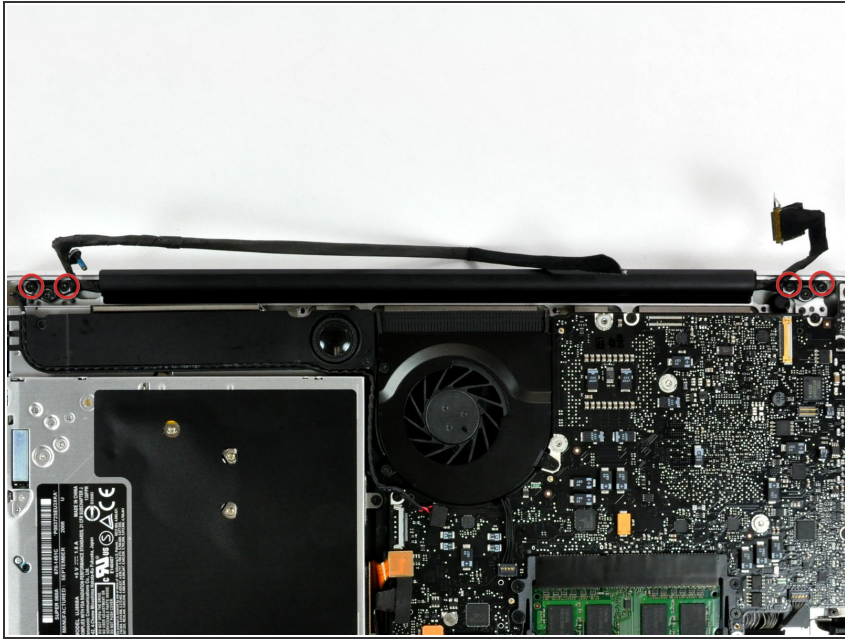
- Grab the plastic pull tab secured to the display data cable lock and rotate it toward the DC-in side of the computer.
- Pull the display data cable connector straight away from its socket.
- ⓘ Make sure to pull the connector straight away and not straight up from its socket.

Step 10



- Remove the following two screws from the display data cable bracket:
 - One 7 mm Phillips screw.
 - One 5 mm Phillips screw.
- Lift the display data cable bracket out of the upper case.

Step 11



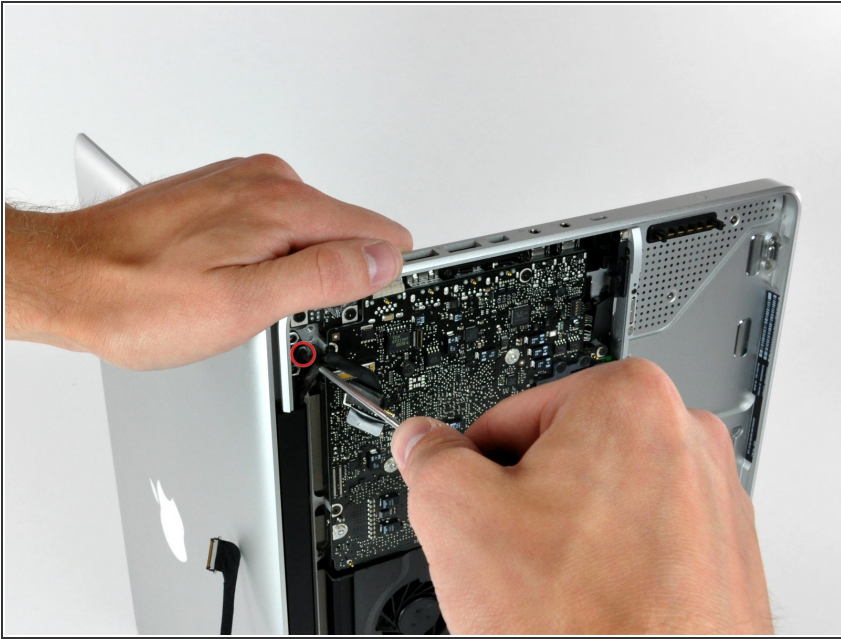
- Remove the two outer 6 mm Torx screws securing each side of the display to the upper case (4 screws total).

Step 12



- Open your MacBook so the display is perpendicular to the upper case.
- Place your opened MacBook on a table as pictured.
- While holding the display and upper case together with your left hand, remove the 6 mm Torx screw from the lower display bracket.

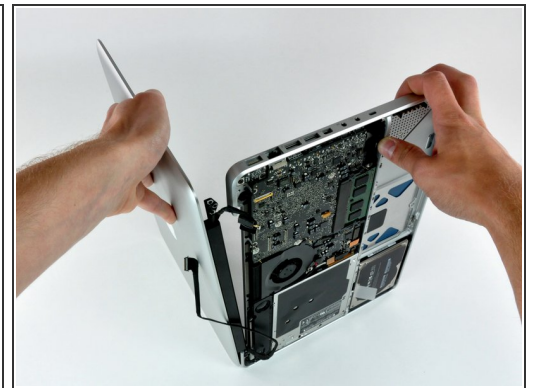
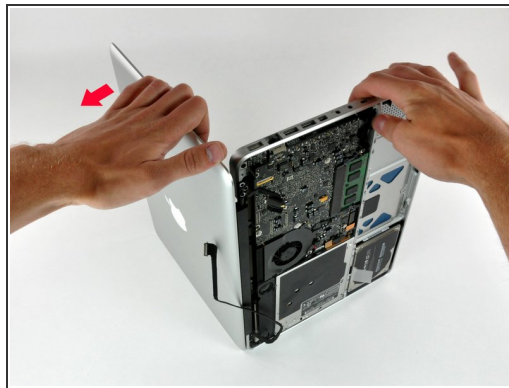
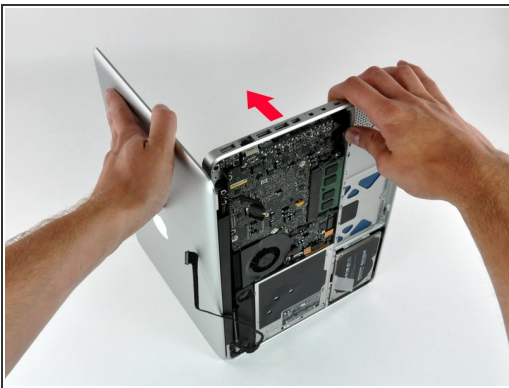
Step 13



⚠ Be sure to hold the display and upper case together with your left hand. Failure to do so may cause the freed display/upper case to fall, potentially damaging each component.

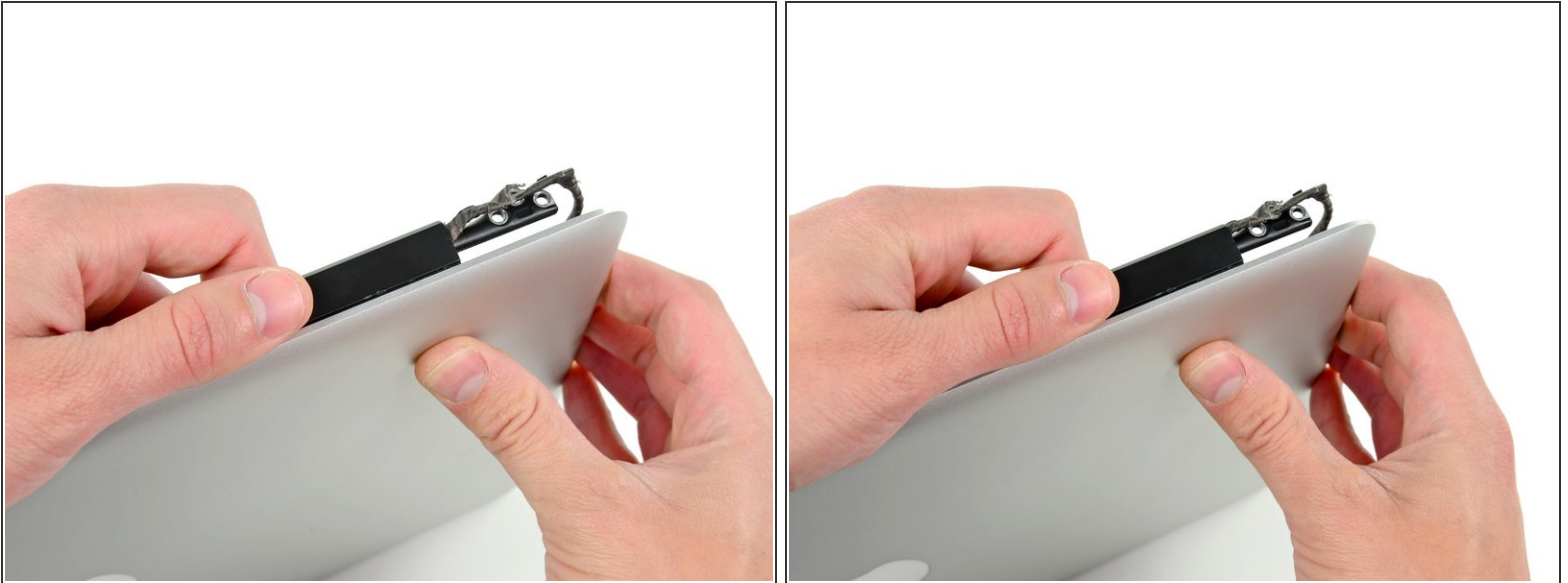
- Remove the last remaining 6 mm Torx screw securing the display to the upper case.

Step 14



- Grab the upper case with your right hand and rotate it slightly toward the top of the display so the upper display bracket clears the edge of the upper case.
- Rotate the display slightly away from the upper case.
- Lift the display away from the upper case, minding any brackets or cables that may get caught.

Step 15 — Clutch Cover



- Grab the clutch cover as shown and slide it toward the right side of the display.

i It should move about 1/4" and stop. Don't force it beyond this point.

Step 16



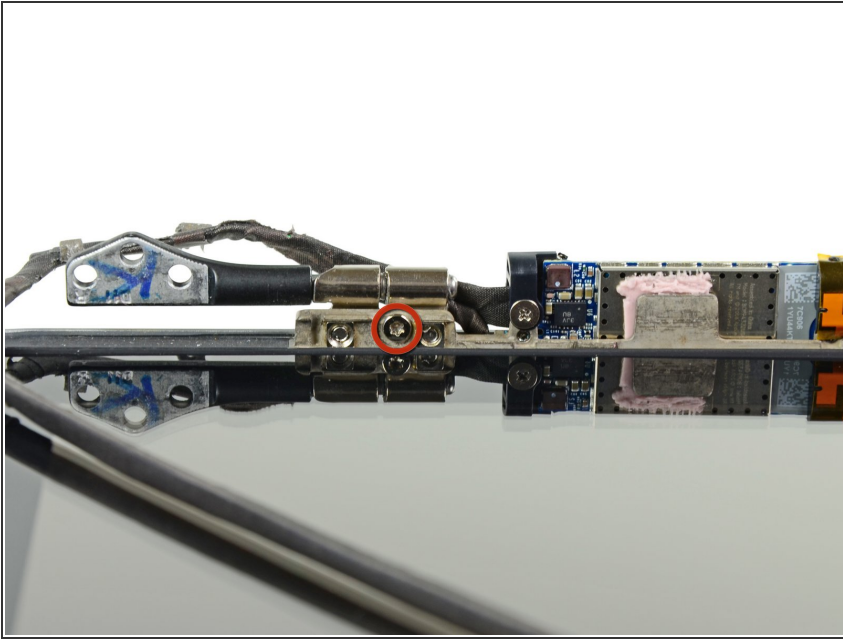
- Gently rock the clutch cover back and forth on its long axis while pulling it away from the display.
- Do this action along the length of the clutch cover until you can lift it off the framework attaching it to the display.

Step 17



- Remove the clutch cover from the display.

Step 18 — Right Clutch Hinge



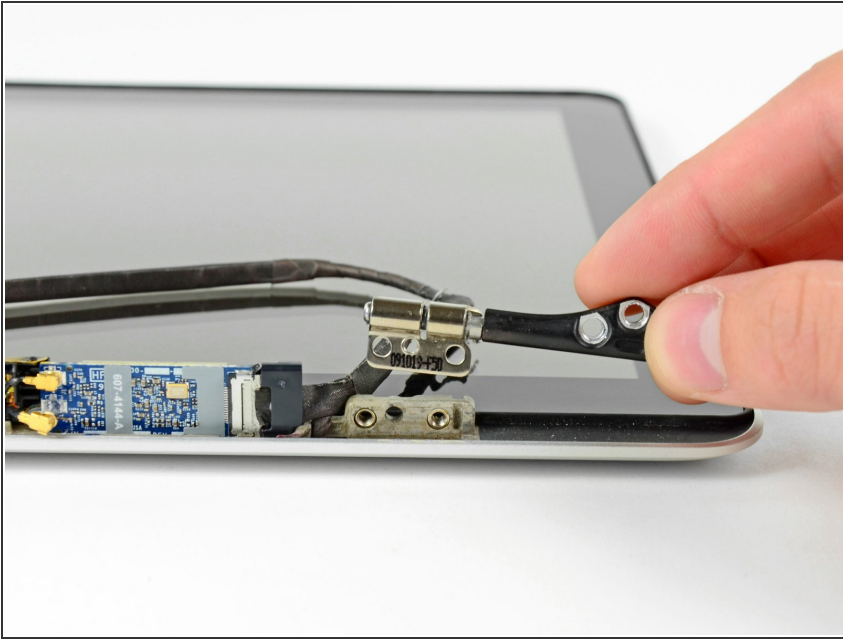
- Remove the single 5.2 mm T6 Torx screw securing the right clutch hinge nearest the display glass.

Step 19



- Remove the two remaining 5.2 mm T6 Torx screws securing the right clutch hinge to the display.

Step 20



- Remove the right clutch hinge.

To reassemble your device, follow these instructions in reverse order.