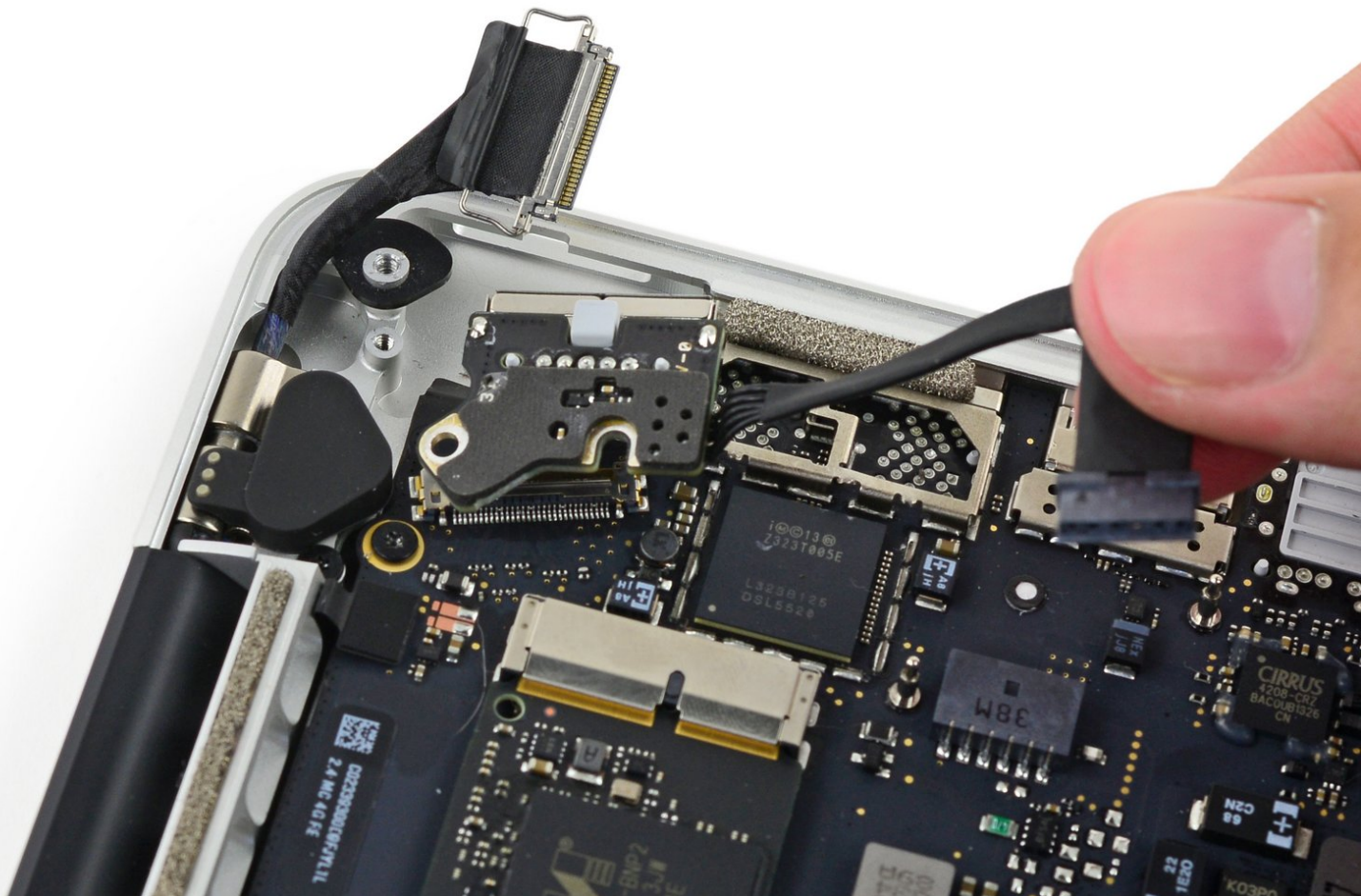




MacBook Pro 13" Retina Display Early 2015 MagSafe DC-In Board Replacement

Replace the MagSafe DC-In Board in your MacBook Pro 13" Retina Display Early 2015.

Written By: Andrew Optimus Goldheart



INTRODUCTION

Use this guide to replace a faulty MagSafe DC-In board.

TOOLS:

- [P5 Pentalobe Screwdriver Retina MacBook Pro and Air](#) (1)
- [Spudger](#) (1)
- [T5 Torx Screwdriver](#) (1)

PARTS:

- [MacBook Pro 13" Retina \(Late 2013/Early 2015\) MagSafe 2 DC-In Board](#) (1)

Step 1 — Lower Case



- Remove the following ten screws securing the lower case to the upper case:
 - Two 2.3 mm Pentalobe screws
 - Eight 3.0 mm Pentalobe screws
- ☑ Throughout this repair, [keep track of each screw](#) and make sure it goes back exactly where it came from to avoid damaging your device.



Step 2



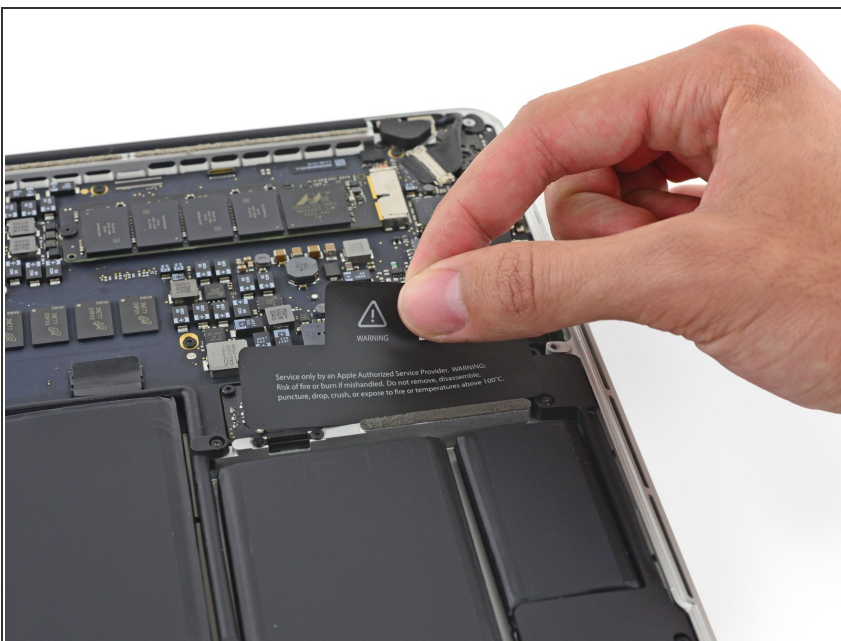
- Wedge your fingers between the upper case and the lower case.
- Gently pull the lower case away from the upper case to remove it.


Step 3



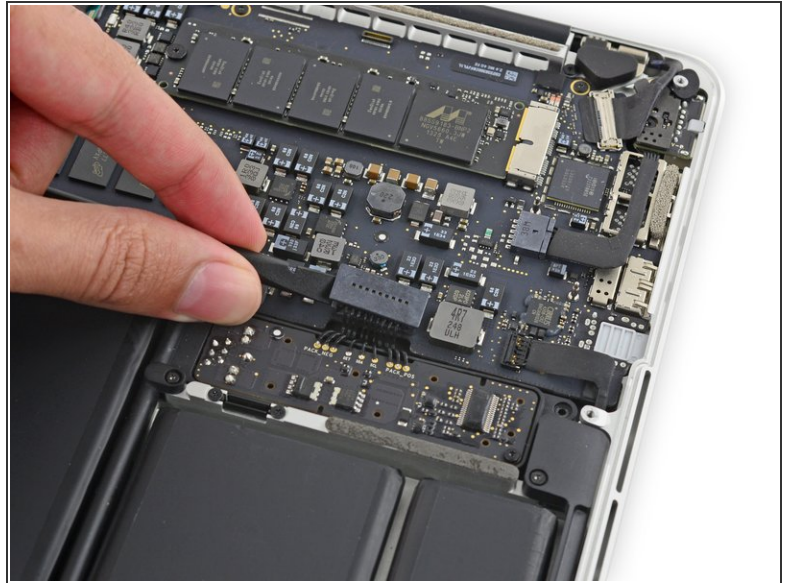
-  The lower case is connected to the upper case with two plastic clips near its center.
-  During reassembly, gently push down the center of the lower case to reattach the two plastic clips.

Step 4 — Battery Connector



-  If necessary, remove the plastic cover adhered to the battery contact board.

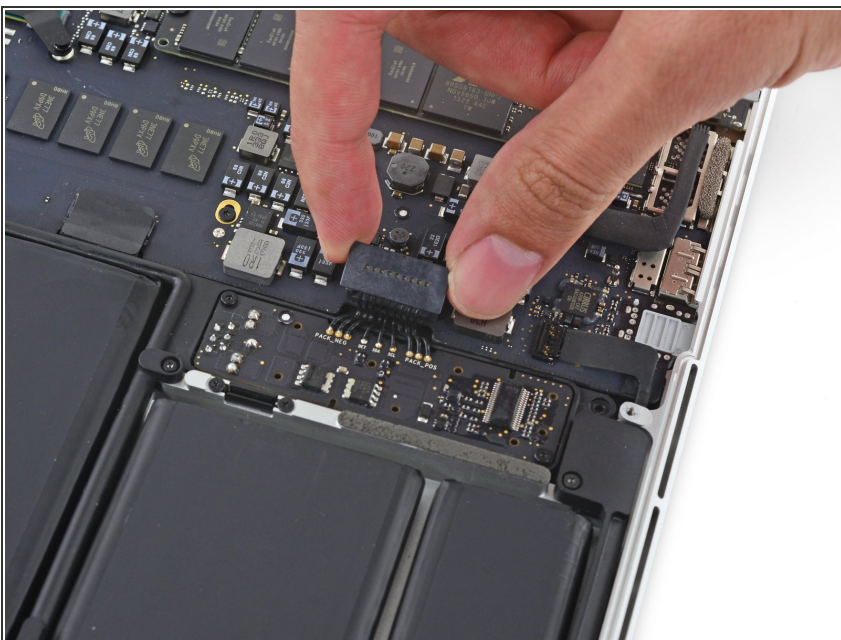
Step 5



- Use the flat end of a spudger to lift the battery connector straight up out of its socket on the logic board.

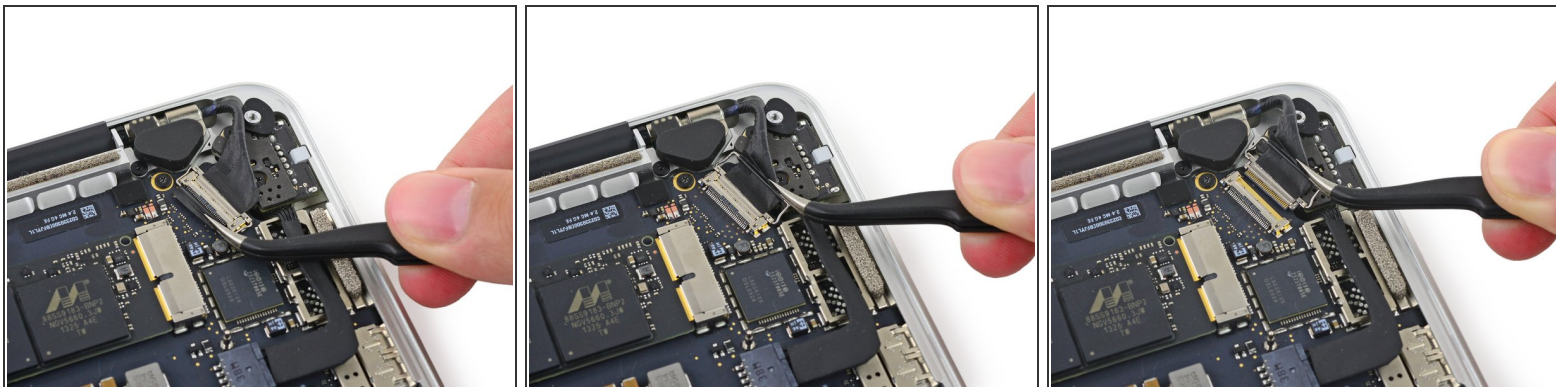
⚠ Be sure you lift up only on the connector itself, **not** the socket, or you risk permanent damage to the logic board.

Step 6



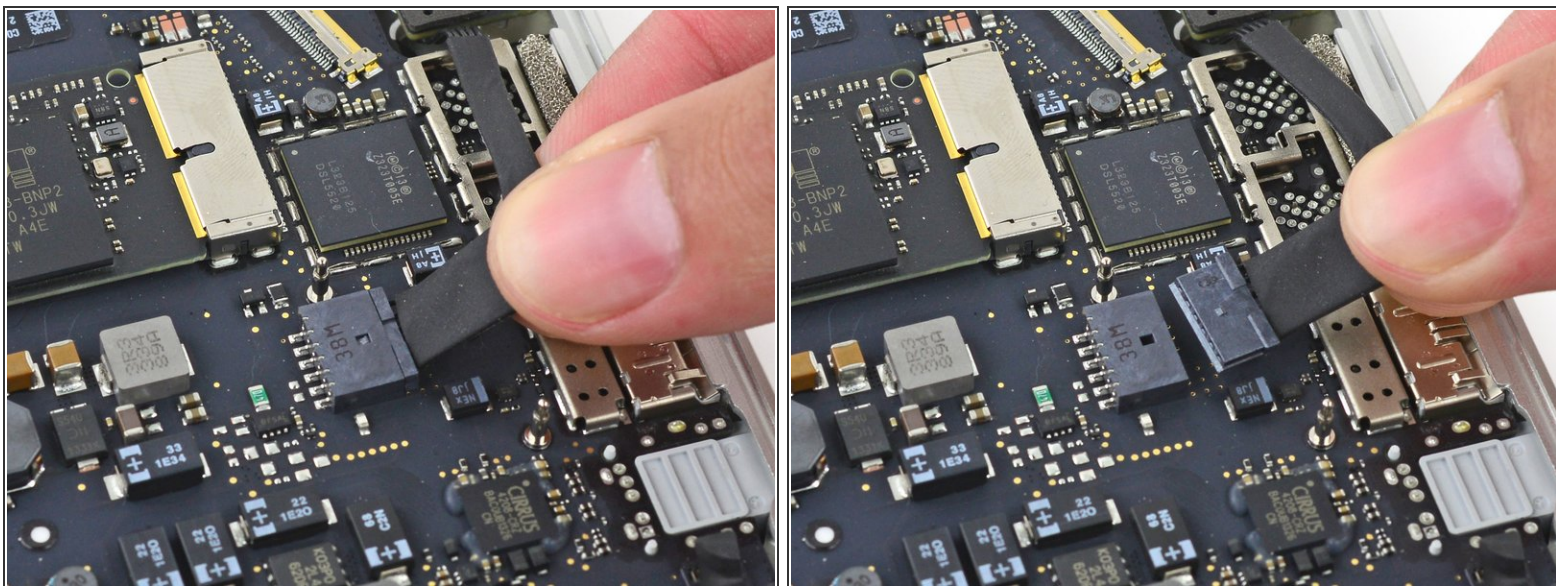
- ☑ Bend the battery connector up out of the way to prevent accidental contact with its socket during your repair.

Step 7 — MagSafe DC-In Board



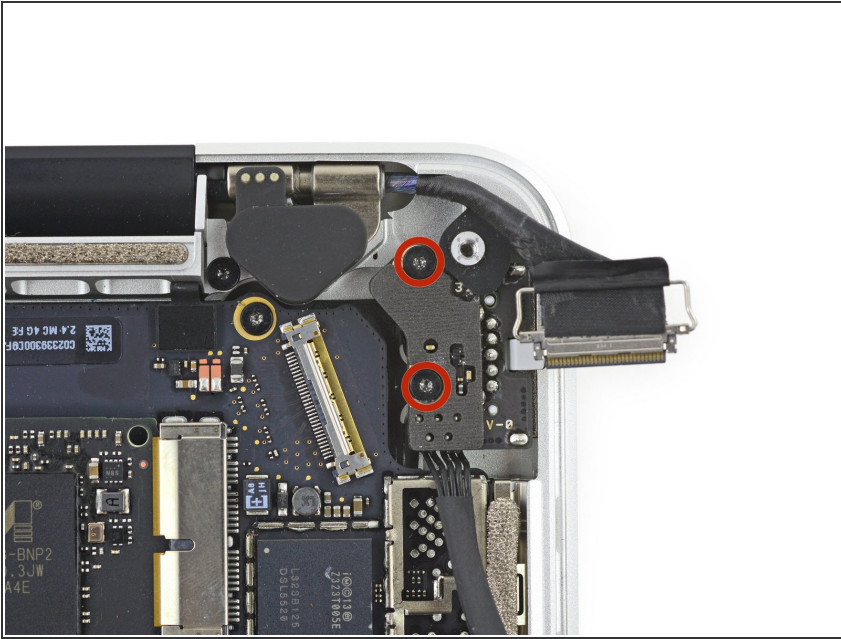
- Grab the black plastic tab to flip the display cable connector open and pull it straight out of its socket on the logic board.
- Pull in the direction of the cable, parallel to the logic board. Do not pull up.

Step 8



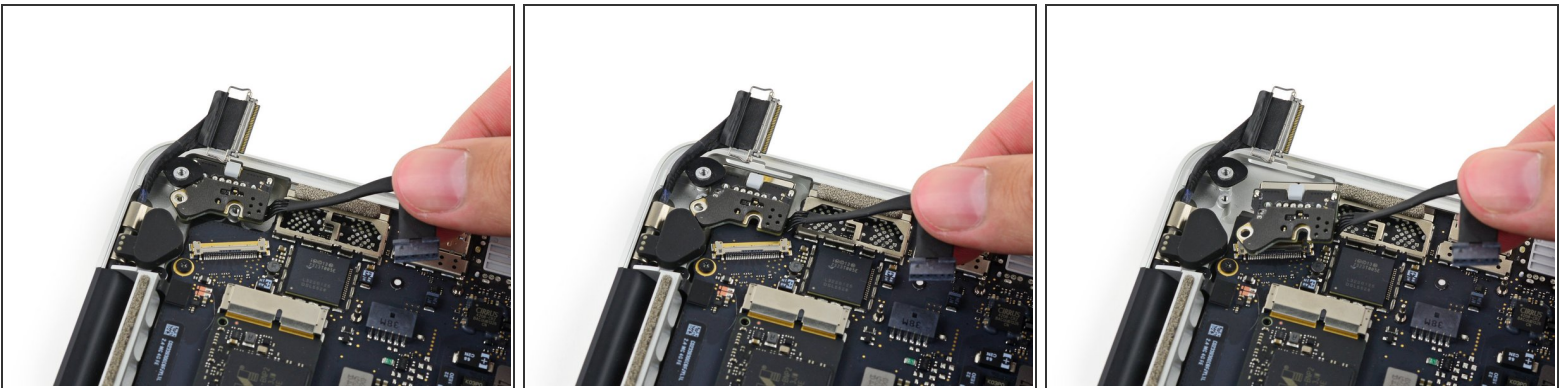
- Pull the DC-In board connector straight out of its socket on the logic board.

Step 9



- Remove the two 3.5 mm T5 Torx screws securing the MagSafe DC-In board to the upper case.
- ⓘ You may need to gently push the display cable out of the way to expose the screws.

Step 10



- Use the MagSafe DC-In board cable to pull the board out and up from the upper case to remove it.

To reassemble your device, follow these instructions in reverse order.