



MSI GE63 Raider RGB 9SF Unboxing Teardown

CPU: Intel Core™ i7-9750H Chipset: Coffee Lake RAM: SK Hynix DDR4 2666MHz 16GB Hard Drive: Samsung PCIe NVMe 256GB, Seagate 1TB HDD GPU: Geforce RTX 2070

Written By: IT FIX

A black MSI GE63 Raider RGB 9SF laptop is shown open, displaying the Windows 10 desktop. The screen features a large, stylized graphic with the text 'GE63 Raider' and 'RGB 9SF' in a metallic, 3D font, along with the MSI dragon logo and the 'msi' brand name. The laptop has a black keyboard with red accents on the WASD keys and a red trackpad. The MSI logo is visible on the bottom bezel of the screen.

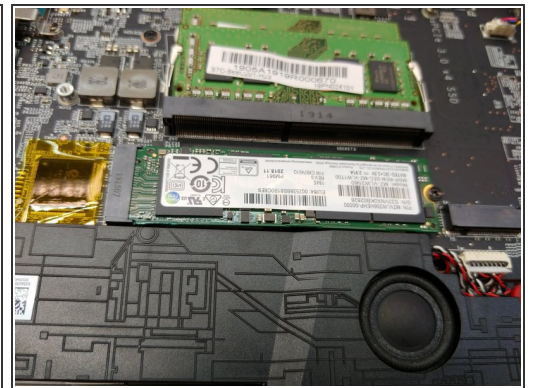
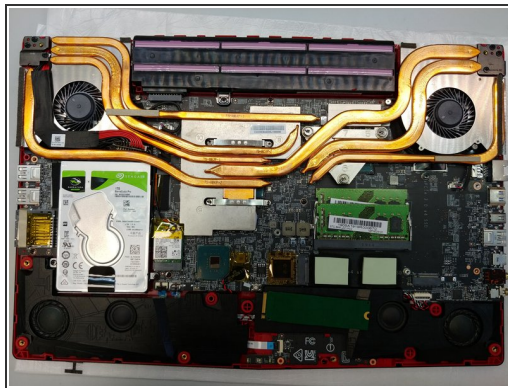
GE63 Raider
RGB 9SF  msi

Step 1 — MSI GE63 Raider RGB 9SF Unboxing Teardown



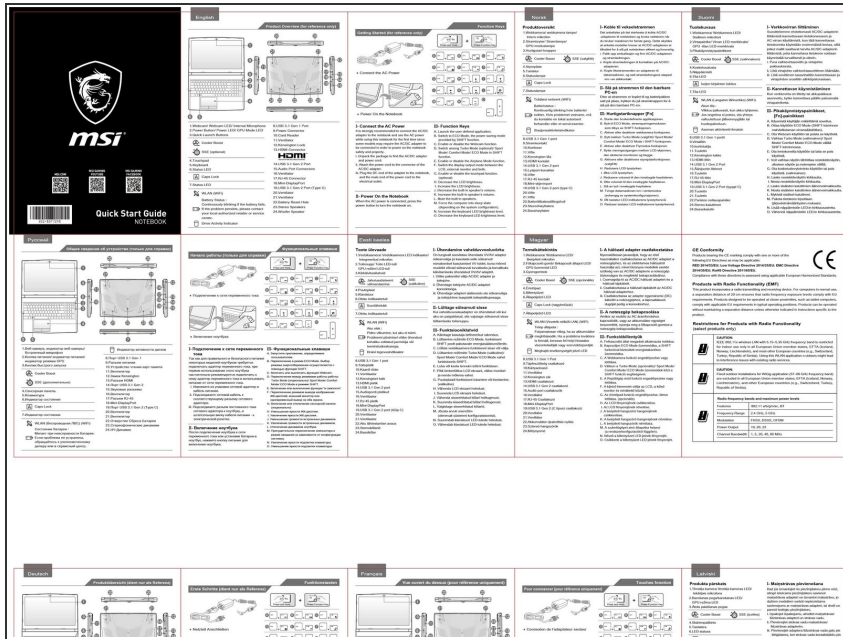
- Insert wisdom here.

Step 2



- Insert wisdom here.

Step 3



● Insert wisdom here.

To reassemble your device, follow these instructions in reverse order.