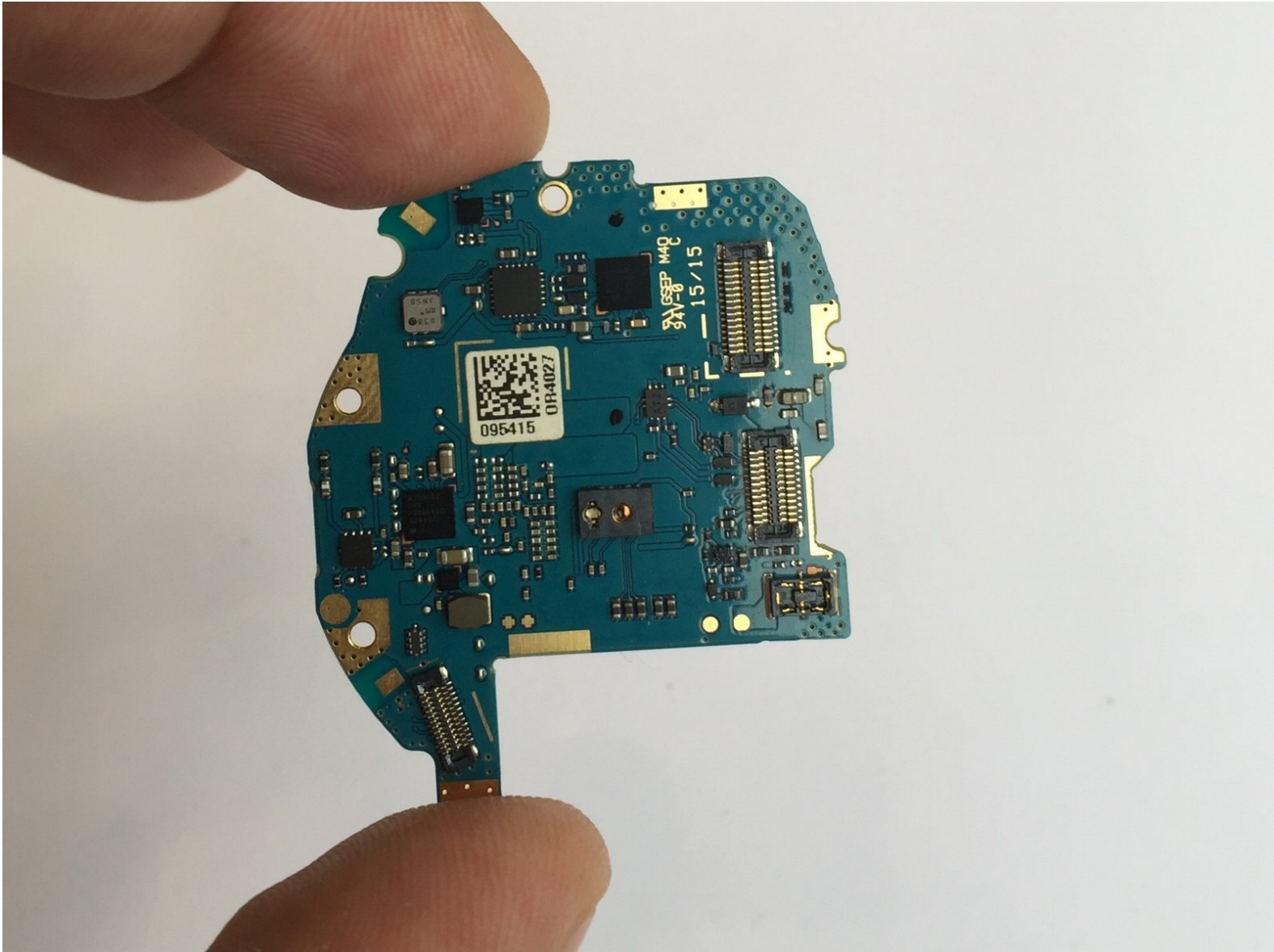




LG Watch Urbane Motherboard Replacement

Replace a faulty motherboard from your LG Watch Urbane to get it working again.

Written By: Rey Diaz



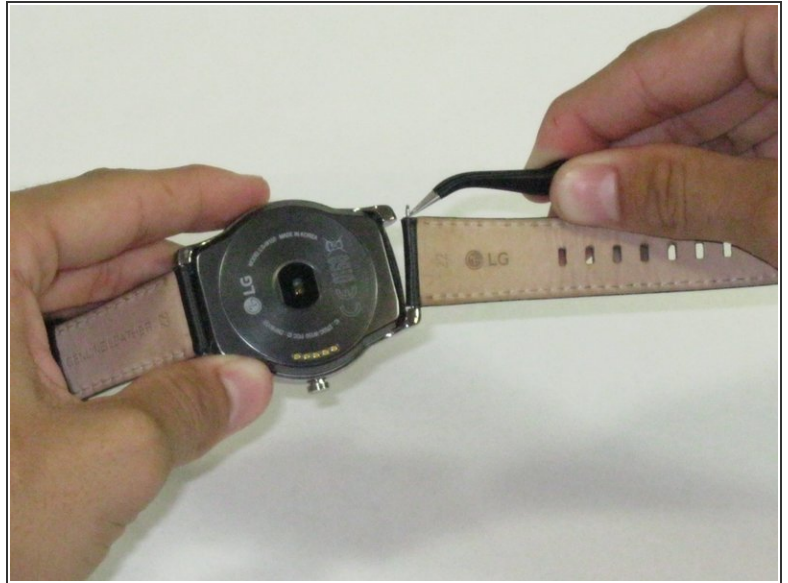
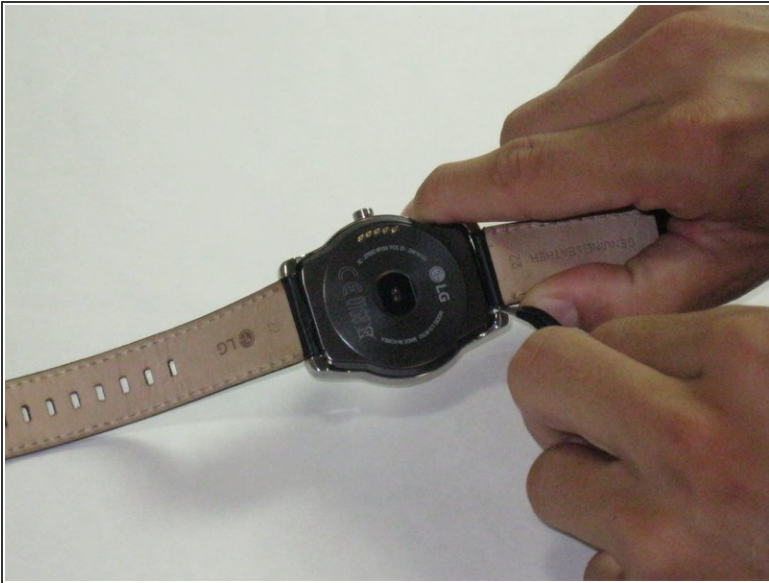
INTRODUCTION

In order to replace your motherboard you are going to need the proper tools. There are screws that need to be unscrewed and components that need to be pried open carefully. The tools needed will be plastic opening tools, PH #000 screwdriver and tweezers. With these prepared everything should be ready to start the replacement of the motherboard for the LG Watch Urbane.

TOOLS:

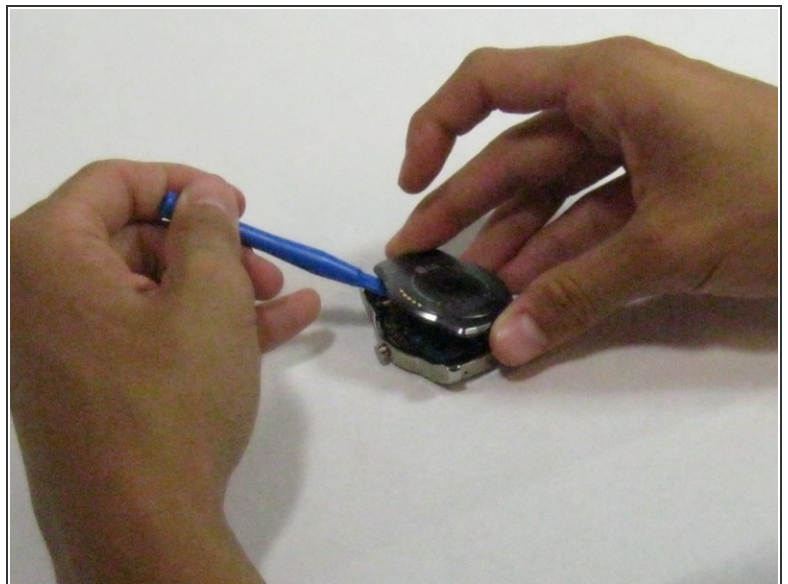
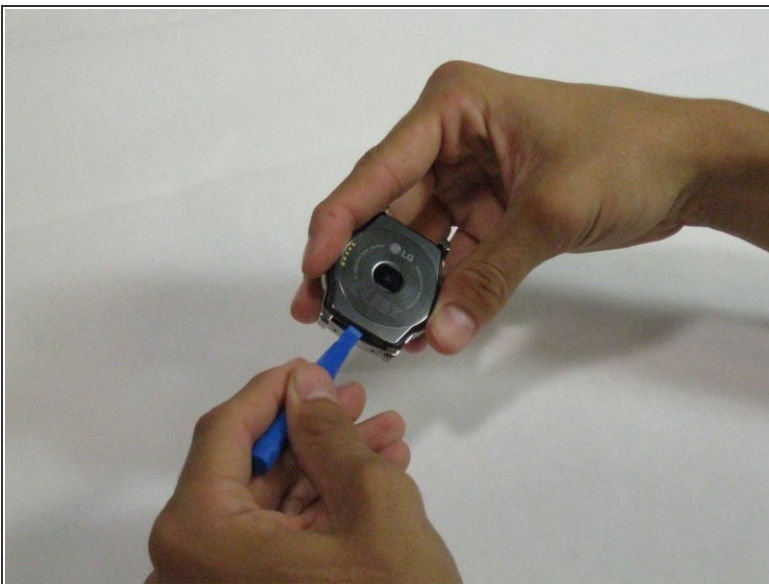
- [Tweezers](#) (1)
 - [Phillips #000 Screwdriver](#) (1)
 - [iFixit Opening Tools](#) (1)
-

Step 1 — Battery



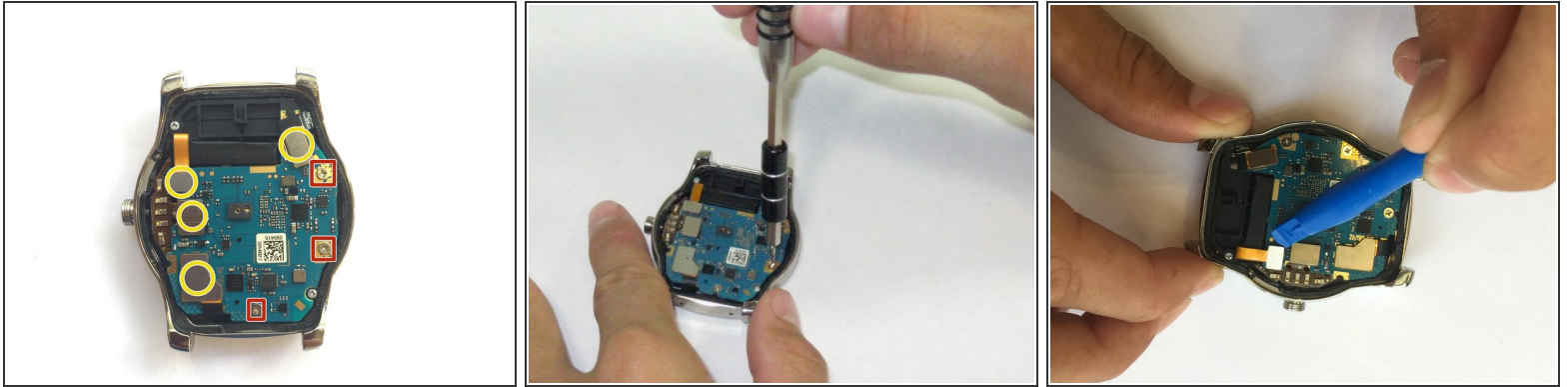
- Push on the band in order to expose the pins
- Using **tweezers**, remove the pins, one on each side, in order to only leave the face of the watch.

Step 2



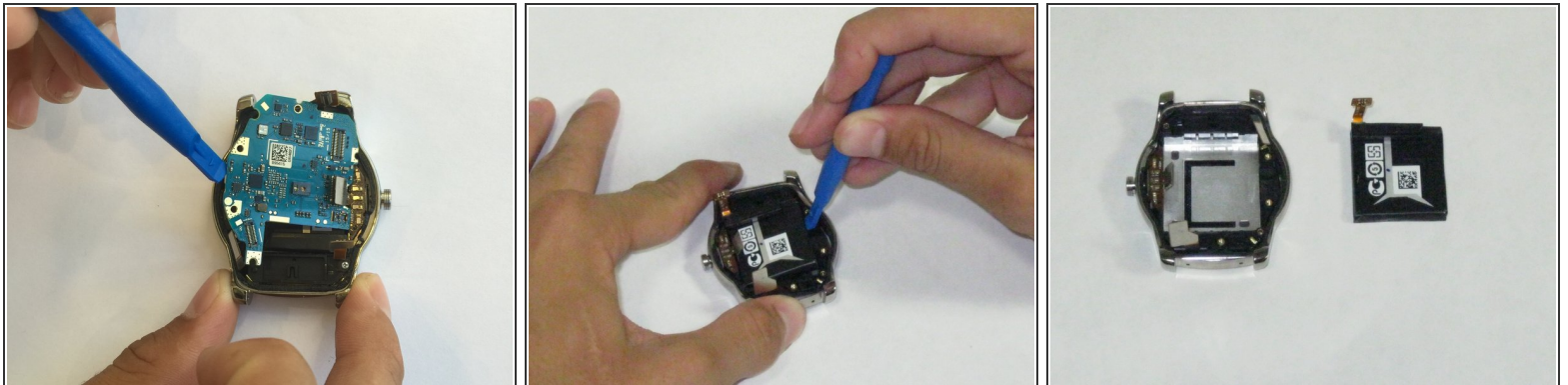
- Using plastic opening tools, carefully pry open the back cover of the the watch.
 - ⓘ Use the little hatch on the bottom portion of the watch in order to easily pry open the watch

Step 3



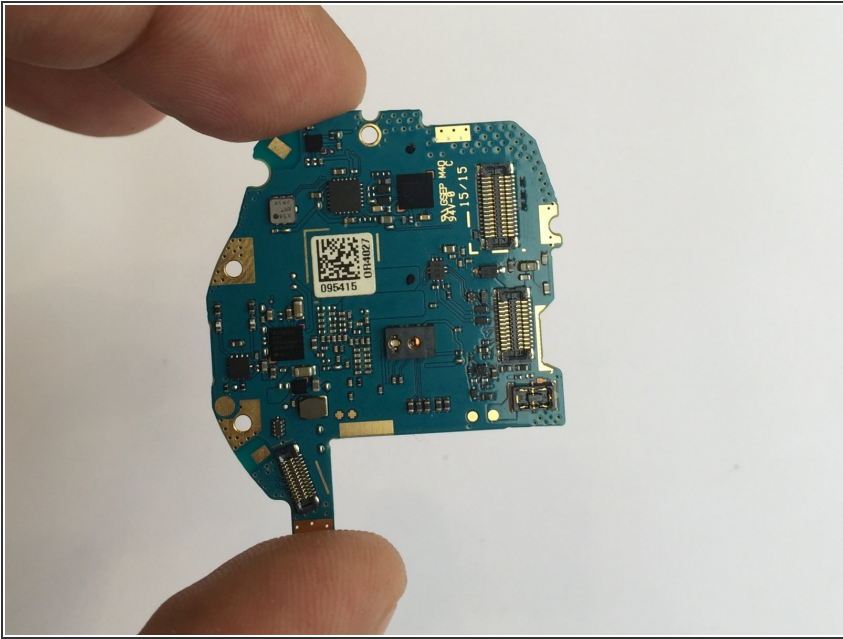
- Using a PH000 screwdriver, remove the three screws in order to release the motherboard from the watch.
- ⓘ Do not lose the three screws! Keep them somewhere you will remember! A magnetic mat can help with this. [iFixit Magnetic Mat](#)
- Using plastic opening tools, remove the four connectors attached to the motherboard

Step 4



- Using the plastic opening tools, carefully lift up the motherboard.
- **IGNORE THIS STEP IF ONLY REMOVING MOTHERBOARD:** Use the plastic opening tools to carefully remove the battery

Step 5 — Motherboard



- And now you have your motherboard

To reassemble your device, follow these instructions in reverse order.