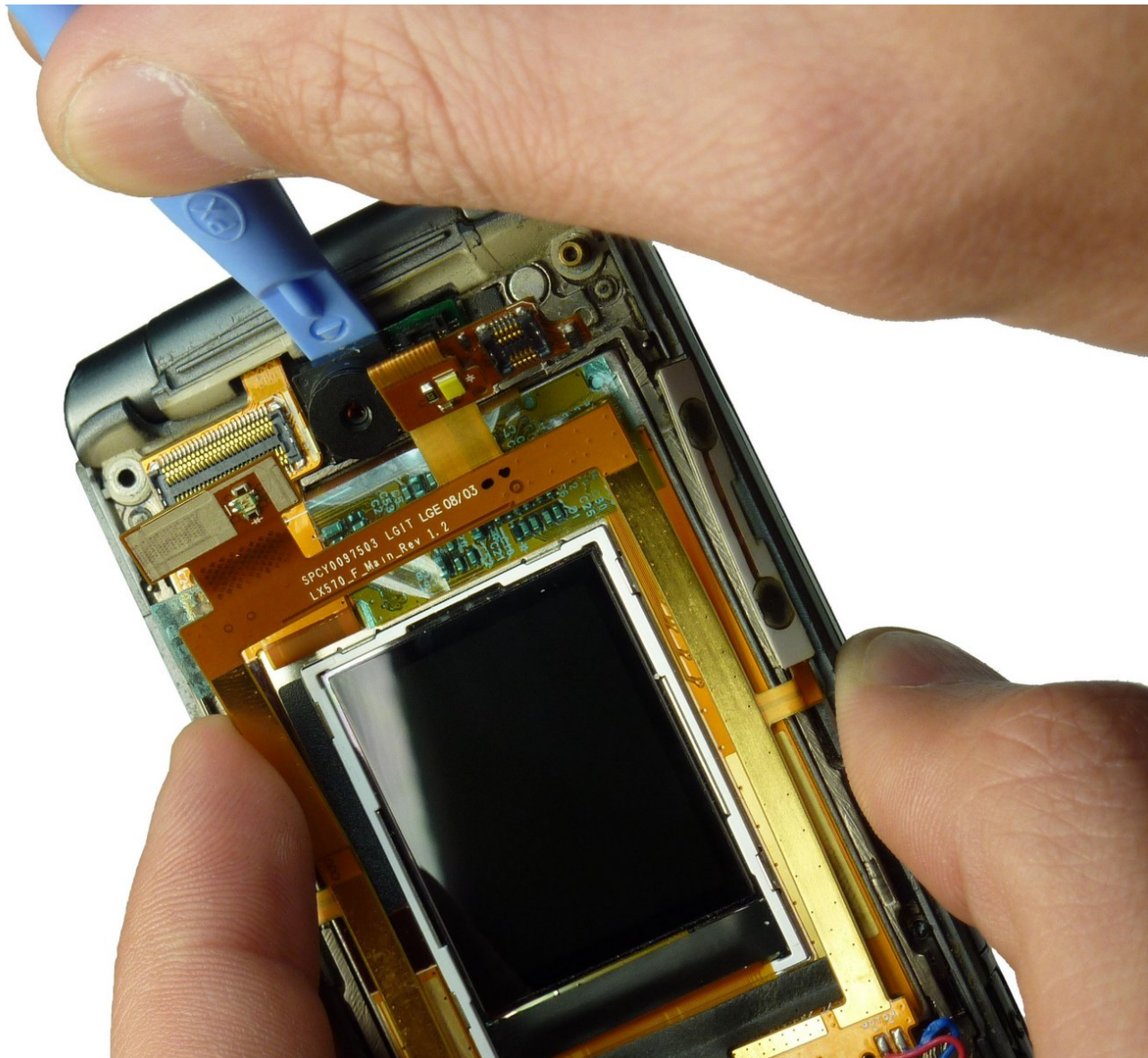




# LG Muziq LX570 Camera Replacement

Replace your LG Muziq's camera.

Written By: Braden Burk



---

## INTRODUCTION

This guide will assist you in replacing your phone's faulty camera.

---

### TOOLS:

- [Phillips #00 Screwdriver](#) (1)
  - [iFixit Opening Tools](#) (1)
-

## Step 1 — Front Case



- Use a spudger to remove the two screw covers below display.
- Use a screw driver to remove the four Phillips #00 (3.3mm) screws at corners of the display.

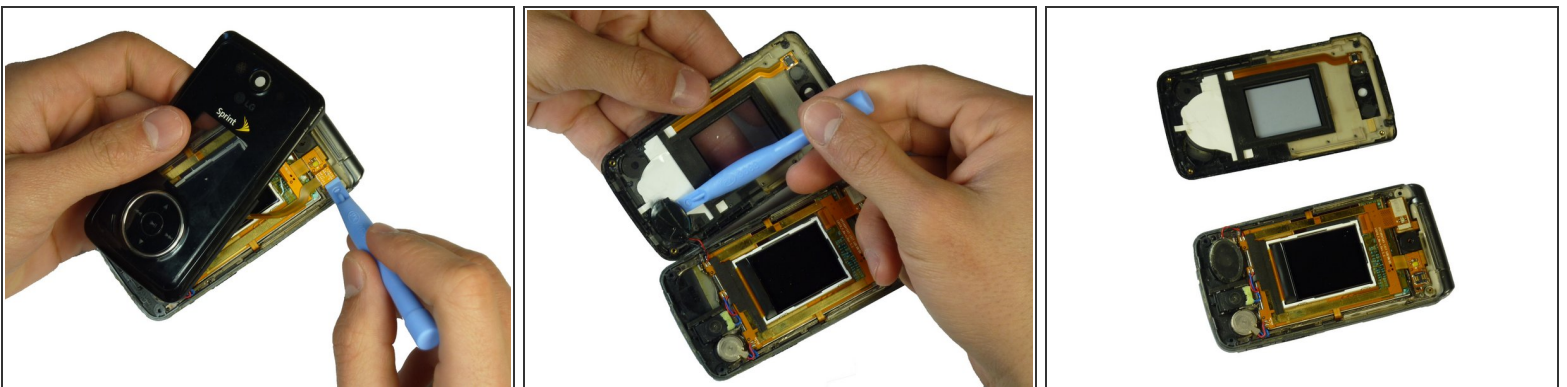
## Step 2



**⚠ Caution:** Wires and ribbon connect the front case to the main body. Exhibit care when separating front case from the main body as to not break the connections.

- **Note:** Side buttons may fall out when removing the front case. Do not misplace them.
- **Note:** Each side button will only fit in the side that it came from.
- Insert a spudger between the black and grey casings and gently spread them apart.
- Work around the device gradually, opening the gap further.

## Step 3

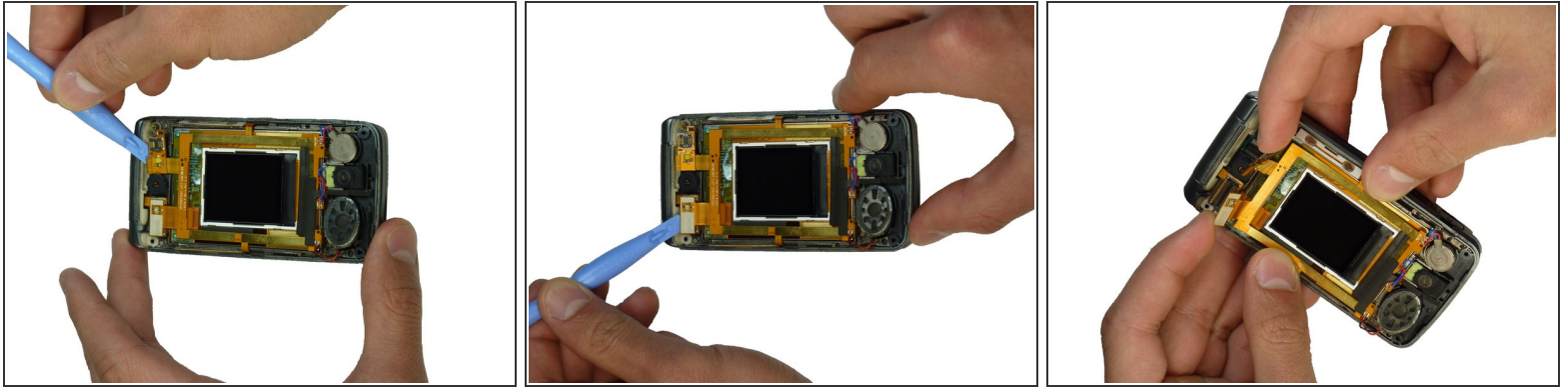


**⚠ Caution:** The wires and ribbon connector can break easily. Exhibit care when removing them.

- Use the spudger and lift upward to disconnect the ribbon from the main part of the phone.
- Carefully remove any parts stuck to the front case such as speakers.

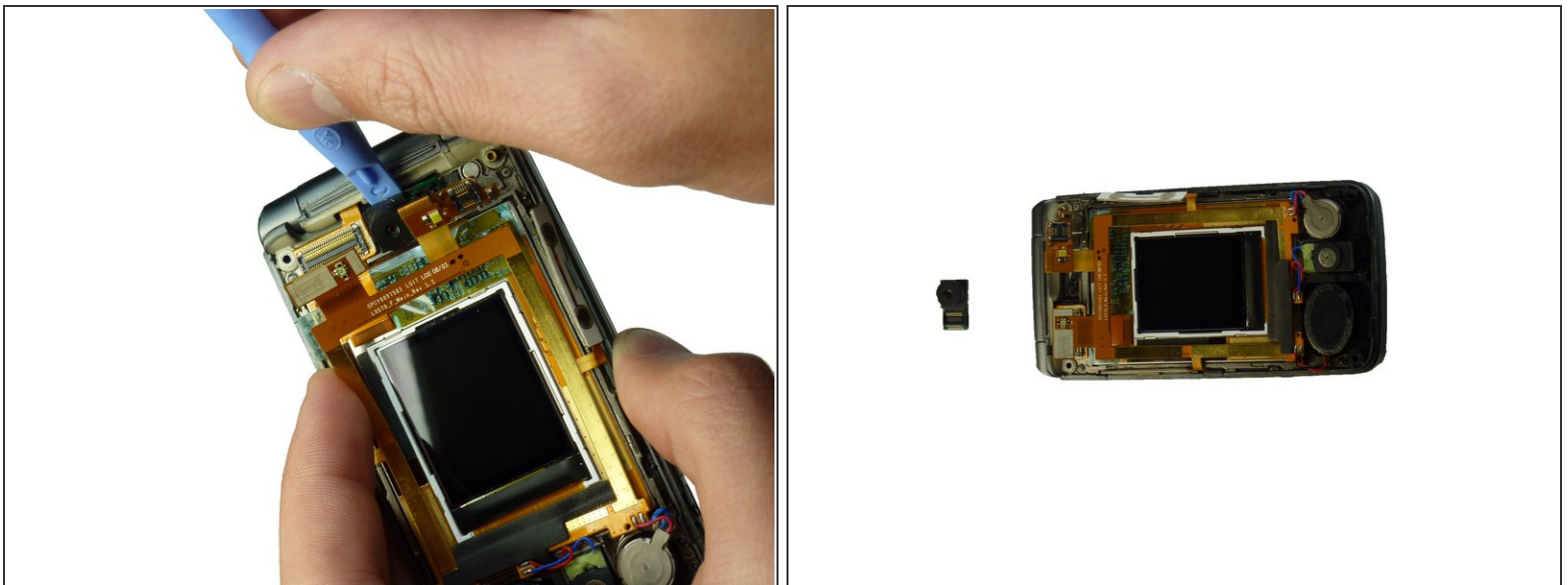


## Step 4 — Camera



- Disconnect the ribbons on both sides of the camera by prying them up with a spudger.

## Step 5



- Hold the wiring out of the way and pull up with a spudger behind the camera.
- The camera unit should come unglued and separate from the phone.

To reassemble your device, follow these instructions in reverse order.