



Intel NUC5i7RYH Disassembly

Disassembly of an Intel NUC.

Written By: Jasen Friedle



INTRODUCTION

This guide will provide information on how to disassemble an Intel NUC5i7RYH or similar.

TOOLS:

- [Phillips #1 Screwdriver](#) (1)
-

Step 1 — Lower Lid



- Place the NUC upside down and start by using a Phillips head screw driver to remove the lower screws on the lower case door.
- These screws are held in with retainers, so they won't fall out when you flip the lid.

Step 2 — Lid and HDD Bracket



- Lift the door, and keep an eye on the cables that connect to the NUC's motherboard. These cables are the power and data cables for the 2.5" hard drive bay.
- Carefully unplug the cables from the motherboard, and set the bracket aside.
- In the last photo, the slot for a blade SSD is marked. This is where you would install the blade SSD, and use a screw to hold it in place.

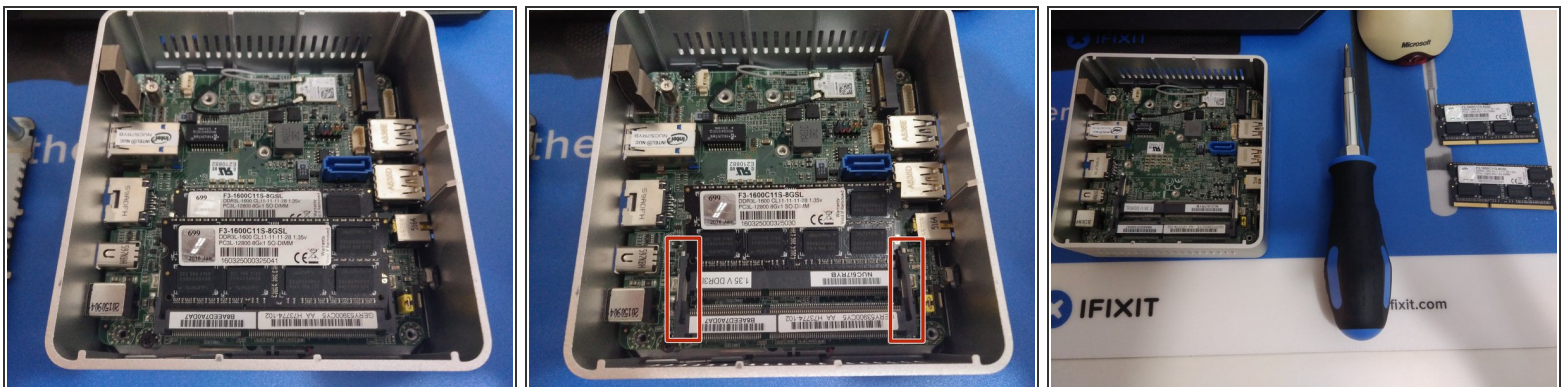
This document was generated on 2019-09-18 08:28:59 AM (MST).

Step 3 — HDD Bracket Disassembly



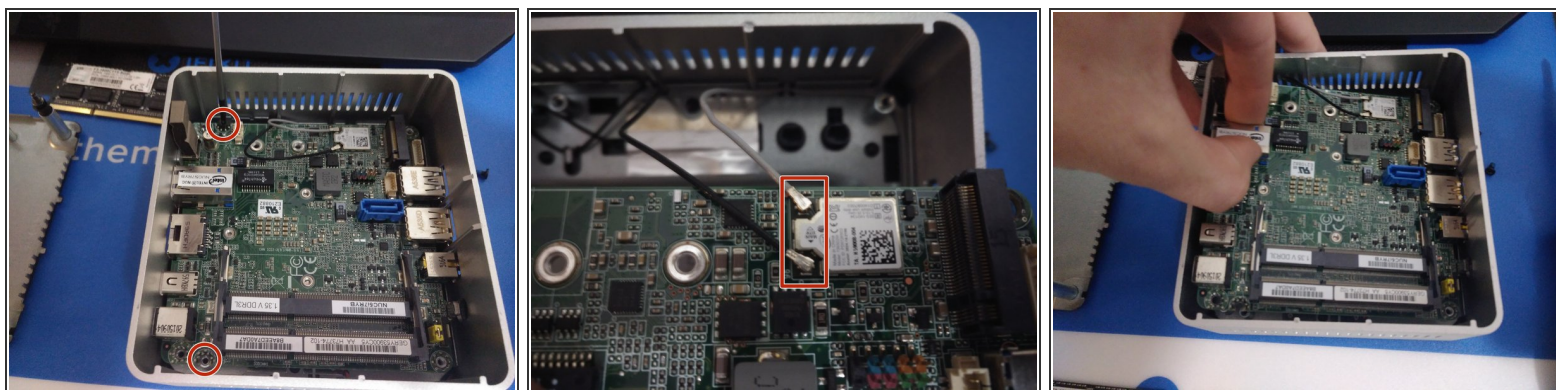
- Remove the 4 silver screws that hold the hard drive in the bracket. The metal shield with thermal pad in the red box will come off: this comes in handy if you have a blade SSD installed, as it insulates it from the metal.
- Carefully slide the 2.5" HDD or SSD out of its case.

Step 4 — RAM Removal



- Removal of RAM on these units is just like on a standard laptop: slightly bend each arm on each side of the chip, and allow it to pop up before sliding it out of the socket.
- If using two sticks of RAM, repeat this process for the lower stick underneath.

Step 5 — Motherboard Removal



- The motherboard is held in with two black Phillips head screws, located on the left hand side.
- Be sure to unplug the antenna cables from the wireless card before removing the motherboard.
- Grasp the ethernet port, and lift the board out of the case.

Step 6 — Motherboard Removal, continued.



- The motherboard should lift right out of the case.
- To remove the fan, unscrew the two Phillips head screws holding it in. It can then be unplugged from the motherboard.

Step 7 — Finish!



- This unit is relatively easy to disassemble and reassemble. Good luck!

To reassemble your device, follow these instructions in reverse order.