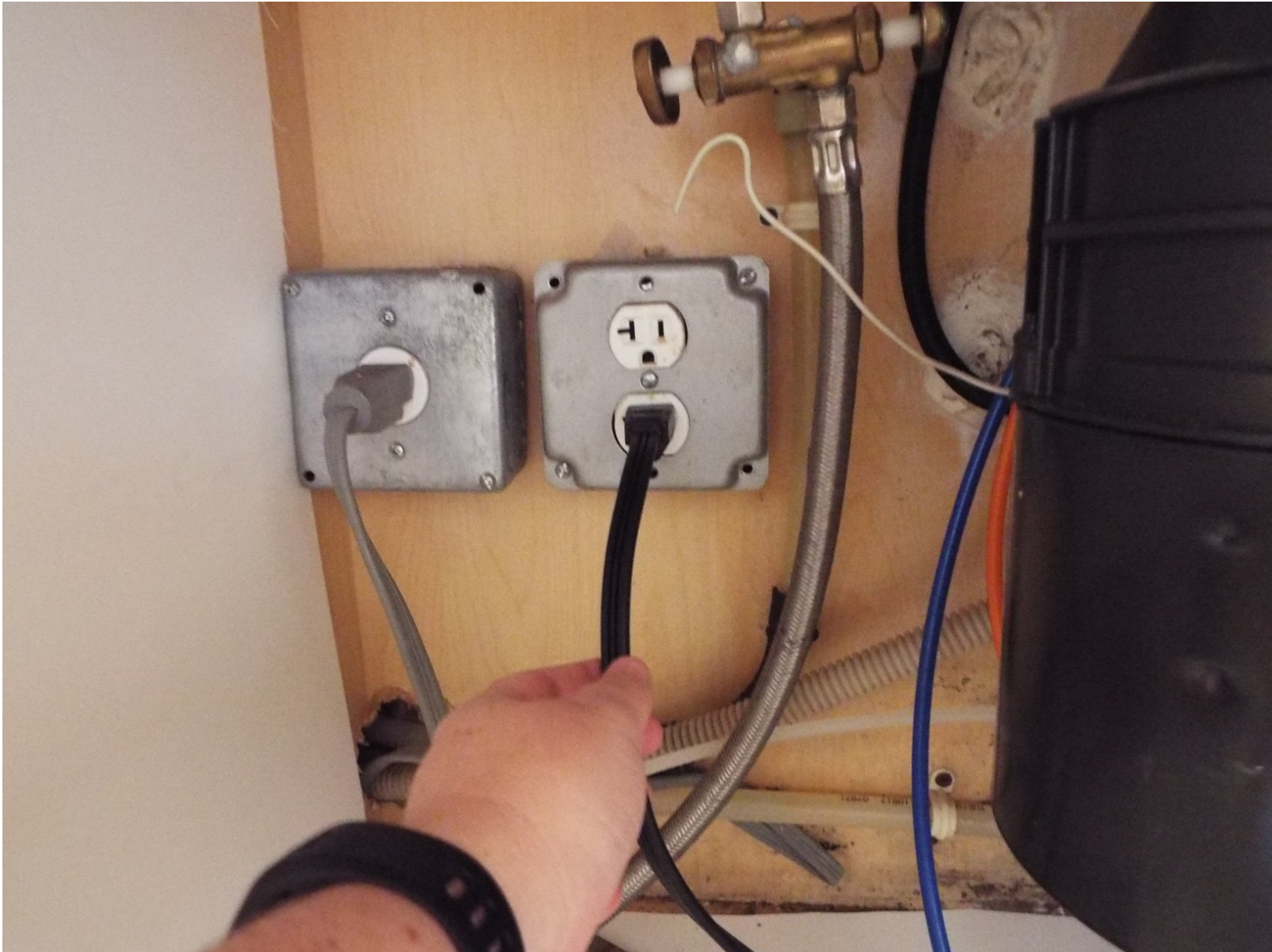




How to fix a leaking garbage disposal at flange

Fix a leaking garbage disposal by disassembly, reassembly, and Plumber's putty.

Written By: Amy Haren



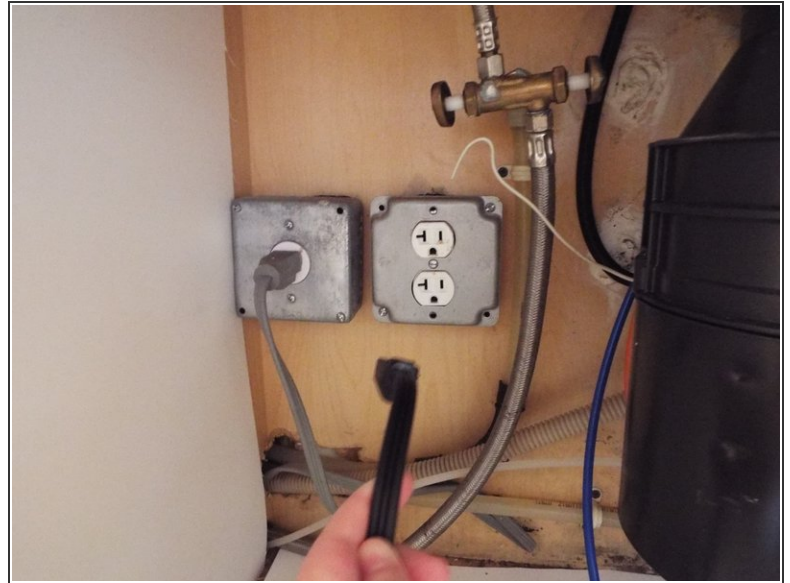
INTRODUCTION

Water damage is one of the most difficult disasters to deal with. A leaking sink can flood your cabinets, create mold and cause thousands of dollars of damage. I have prepared a relatively simple and inexpensive fix to repair a leaking garbage disposal without the hassle of calling a plumber and spending a larger amount of money. This fix requires a screw driver, a hammer or chisel and Plumber's Putty.

TOOLS:

- [Phillips #0 Screwdriver](#) (1)
 - [Plumbers putty](#) (1)
 - [6-in-1 Screwdriver](#) (1)
 - [Channellock Groove Joint Pliers](#) (1)
-

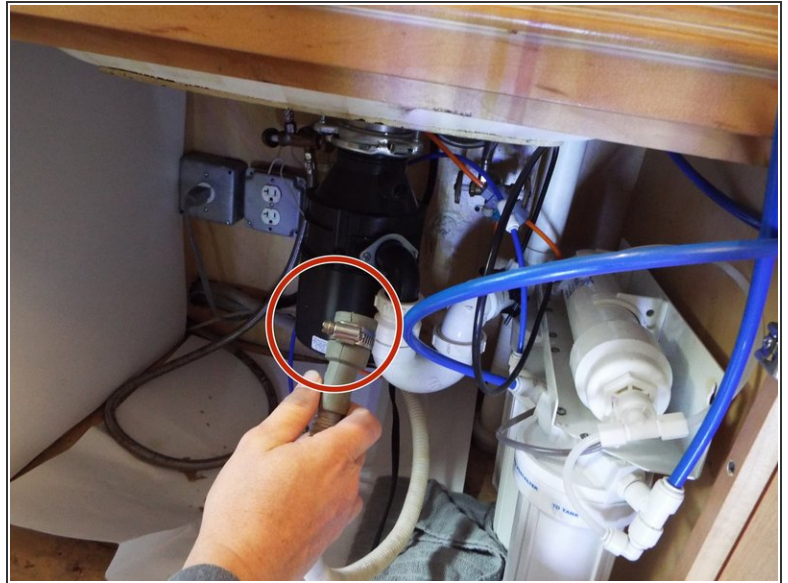
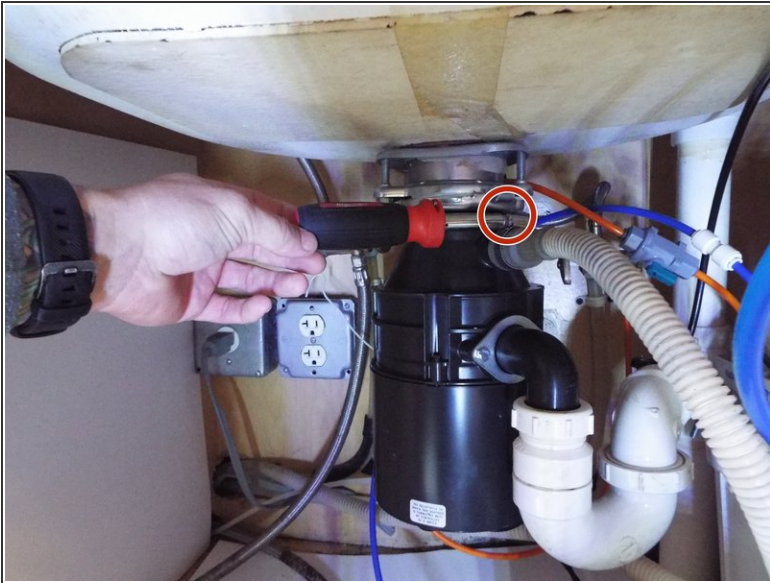
Step 1 — How to fix a leaking garbage disposal at flange



- Unplug the garbage disposal from the power source.

⚠ Be sure to place the wall plug in a dry location for the duration of the fix.

Step 2



- Loosen and disconnect the dishwasher drain hose from the garbage disposal unit.
- Do so by loosening the clamp and unscrewing the screws with a flathead screwdriver.
- Remove the screws and pull the gray tube from the disposal.

Step 3



- Remove the three screws from the flange at the top of the garbage disposal unit. These screws are at the top right above the black disposal box.
- Disconnect lock-nut at flange.
- ⓘ Adequate lighting is imperative for this step.

Step 4



- Use screwdriver to turn locking ring counter clock-wise disengaging drain hose and disposal.
- ⓘ You will be able to hear the locking ring come undone after pushing it forcefully to the left.
- Disposal will drop down. When disposal falls catch and place on bottom of sink.
- Move from underneath the sink to the top of the sink.

Step 5



- To remove flange you will push from underneath the sink with one hand and pull it out through the top of the sink with your other hand.
- Scrape off ALL excess putty from flange and sink.

Step 6



- Remove small ball of putty and roll into golf ball shape.
- Roll flat until putty becomes snakelike shape approximately 3/4 inch diameter.
- ⓘ Be sure that putty is long enough to wrap completely around flange.

Step 7



- Roll into snake-like shape until long enough to fit fully around flange.
- Wrap around flange and place flange back into sink.
- Press down hard into sink and remove any excess Plumber's Putty.

Step 8



- Reassemble flange and garbage disposal reversing steps.
- Put sink stopper in and fill up sink approximately halfway. Remove stopper and check underneath sink for leak.

To reassemble your device, follow these instructions in reverse order.