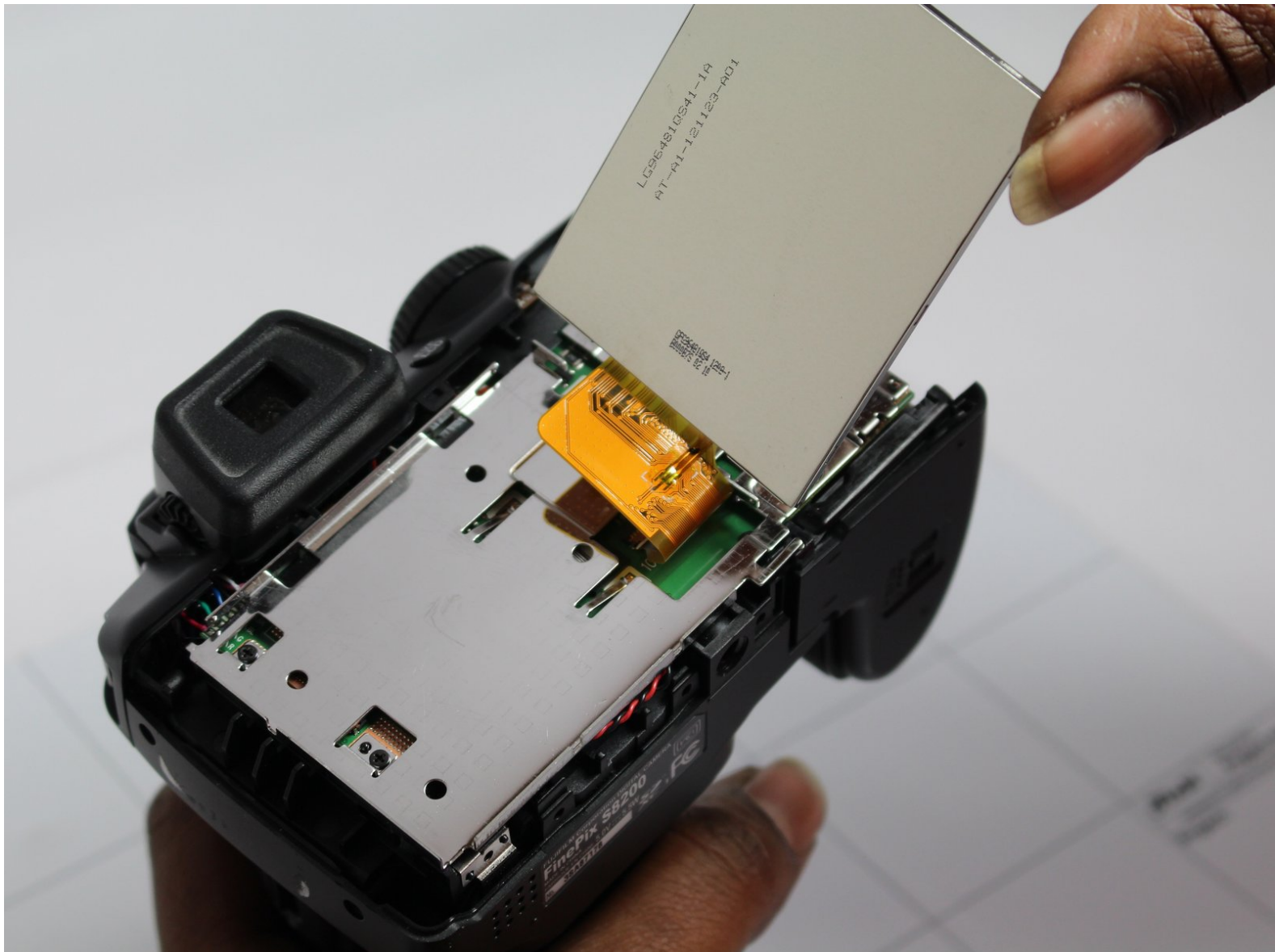




# How to check Fujifilm FinePix S8200 for loose LCD connection

This guide shows how to make sure the LCD connection is secure.

Written By: Joseph Kelley



---

## INTRODUCTION

If your LCD screen doesn't seem broken, you should check that it is properly connected to the motherboard. This is a much cheaper fix than buying a new LCD screen for the camera.

---

### TOOLS:

- [iFixit Opening Tools](#) (1)
  - [JIS #00 Screwdriver](#) (1)
-

## Step 1 — Batteries



- Turn the camera upside down so you can access the battery chamber.
- ⚠ Make sure that the camera is powered off before opening the battery chamber. Not doing so could damage your memory card.

## Step 2



- Push the battery chamber latch in the direction of the front of the camera. Keeping tension on the latch, slide the battery chamber cover toward the outside of the camera, opening the battery chamber.

### Step 3



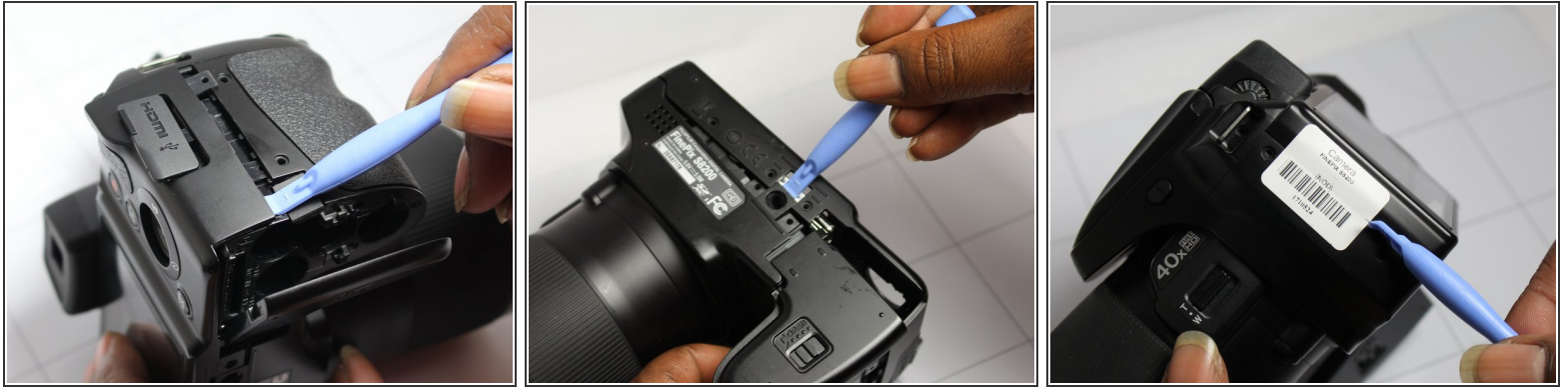
- With the battery chamber open, remove the old batteries.
- ★ When replacing the batteries, remember that the battery orientation is shown by the + and - marks. Each mark indicates which side of the battery faces up in the chamber.

### Step 4 — Rear Housing Cover



- Remove the 4mm JIS #00 screws from the sides and bottom of the camera.

## Step 5



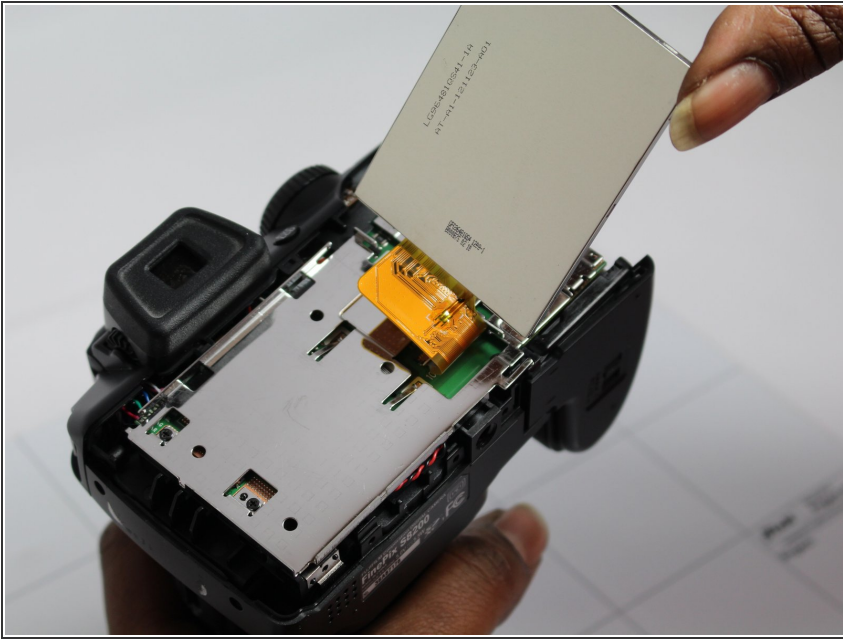
- Carefully pry away the rear housing cover with the plastic opening tool.

## Step 6



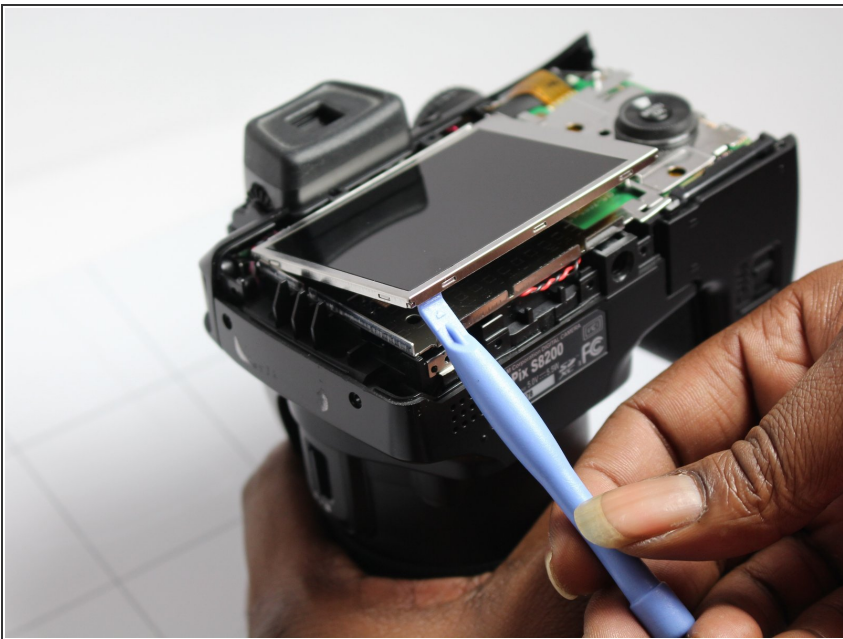
- Remove the rear housing cover by carefully pulling it away from the camera.

## Step 7 — How to check Fujifilm FinePix S8200 for loose LCD connection



- Fold back the LCD screen and check that the cable coming from the screen is securely fastened to the motherboard.

## Step 8



- Fold the LCD screen back into the proper position.

To reassemble your device, follow these instructions in reverse order.