



HP Split x2 13-g210dx Battery Replacement

How to replace the battery in an HP Split x2 13-g210dx.

Written By: Darian Devries



INTRODUCTION

If the laptop only powers on while plugged in, then the battery is defective. Use this guide to access, remove, and replace your battery. Separating the back panel from the clips on the device will require the use of force.

TOOLS:

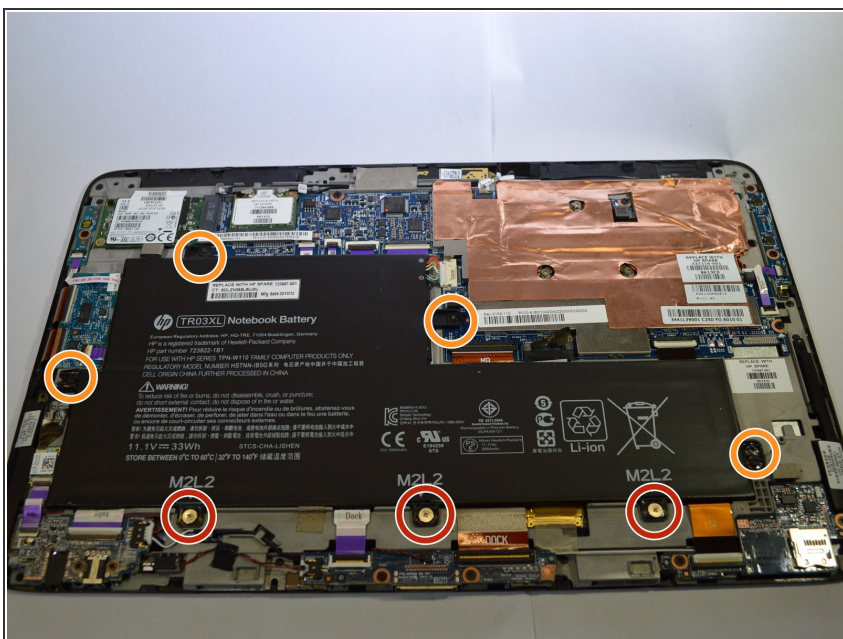
- [Phillips #0 Screwdriver](#) (1)
 - [Spudger](#) (1)
 - [Tweezers](#) (1)
-

Step 1 — Back Panel



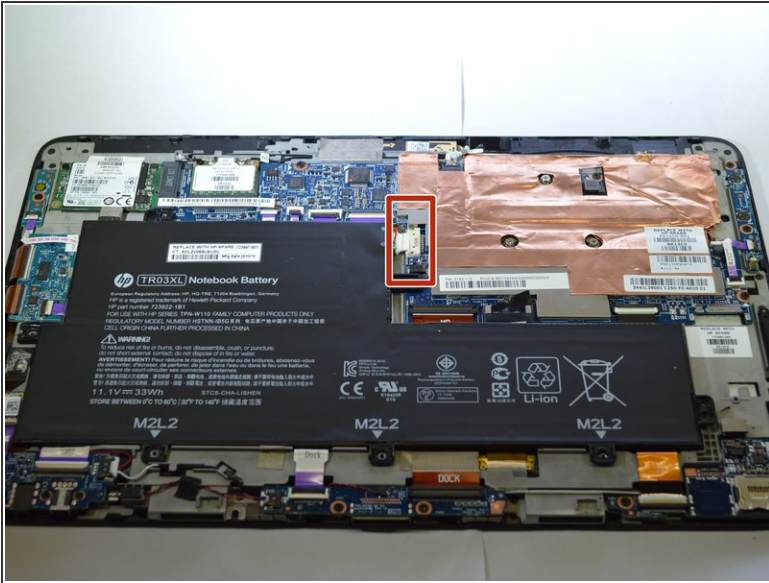
- Carefully peel off the felt cover that is found beneath the display along the bottom of the device.
- Use a spudger to gently scrape away the padding that hides the screws in each of the four locations.
- Remove the four 4-mm Phillips #0 screws.
- Run a spudger along the crease of the entire laptop and slowly pry off the back panel of the device, beginning with the bottom edge.
- ⓘ You will hear popping noises as the clips separate from each other.

Step 2 — Battery



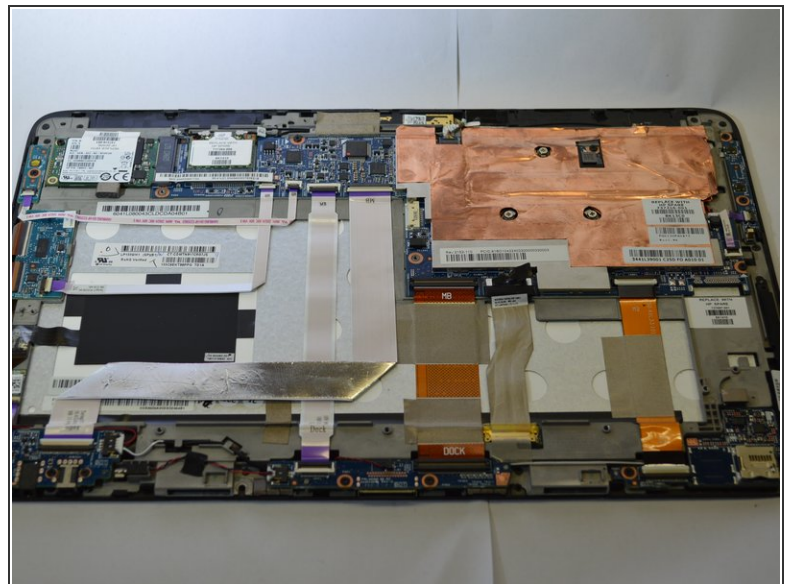
- Remove the three 6-mm Phillips #0 screws.
- Remove the four 4-mm Phillips #0 screws.

Step 3



- Remove the white connector clip from the connector port using a sturdy tweezers.

Step 4



- Lift the battery away from the device.

To reassemble your device, follow these instructions in reverse order.