



# HP Pavilion x360 m1-u001dx Battery Replacement

Replace the battery if your device will not charge or drains charge quickly.

Written By: Katie



## INTRODUCTION

If power drains quickly for your battery or your battery will not charge, you may need to replace your battery. To replace the battery, you will need to know how to use a screwdriver. Small parts (screws) may be a swallowing hazard for young children; keep all parts in a secure location.

---

### TOOLS:

- [Heavy-Duty Spudger](#) (1)
  - [Metal Spudger](#) (1)
  - [Phillips #00 Screwdriver](#) (1)
  - [iFixit Opening Tools](#) (1)
-

## Step 1 — Keyboard



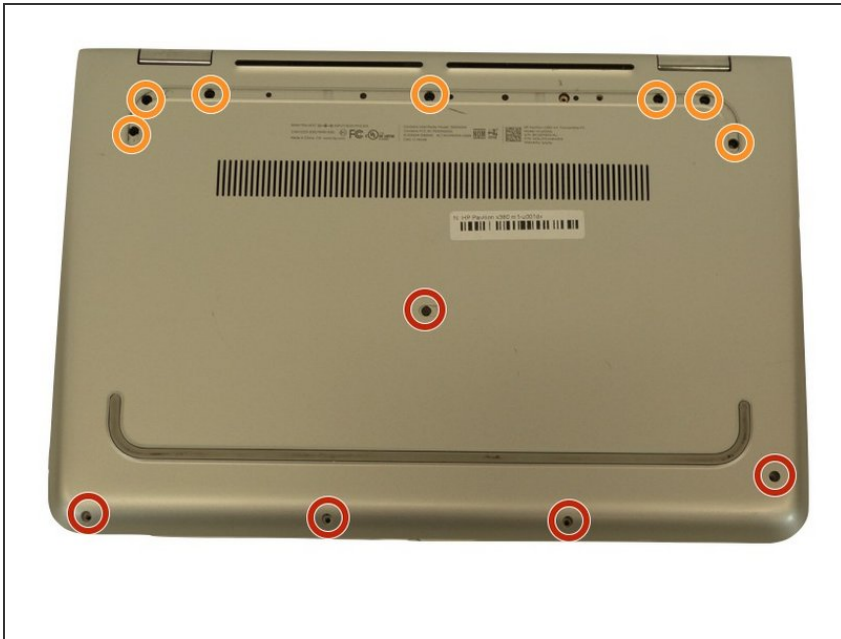
- Power off your device and disconnect all external devices connected to the laptop.
- ⚠ Working on your device while it is powered on may cause damage to the laptop or result in electric shock.

## Step 2



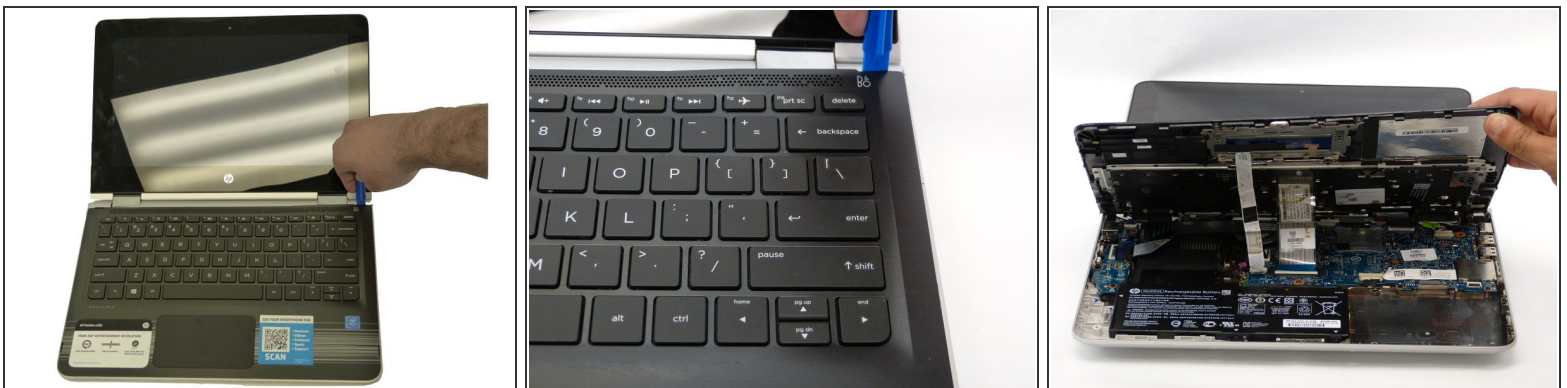
- Flip the laptop over and remove the rubber foot with a Metal Spudger.

### Step 3



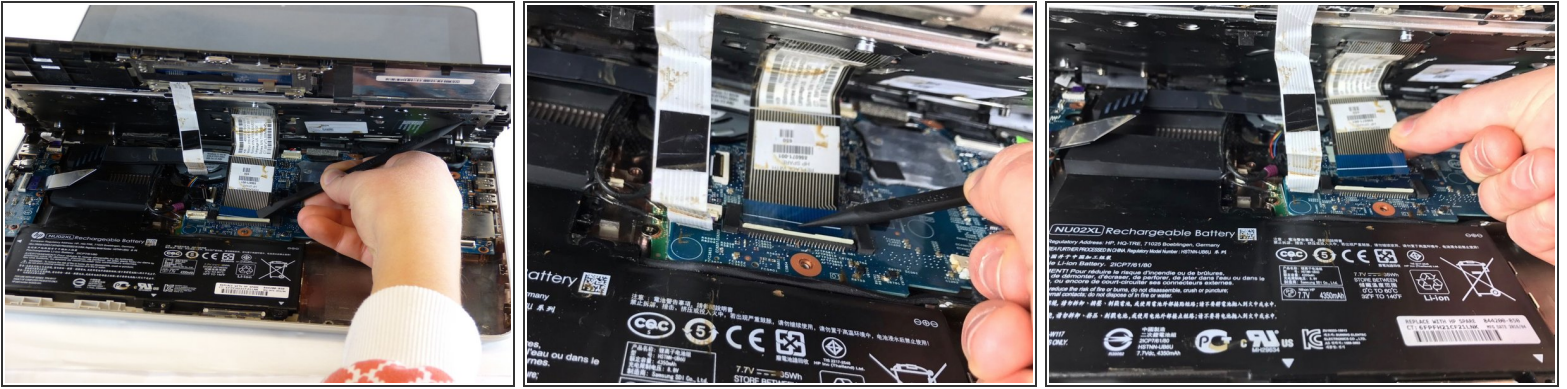
- Remove the screws from the bottom of the laptop with a Phillips 00 Screwdriver.
- 5 Phillips 2.4 x 5.7 mm screws
- 7 Phillips 2.0 x 5.0 mm screws
- ⓘ Keep the different sized screws separate for future replacement.

### Step 4



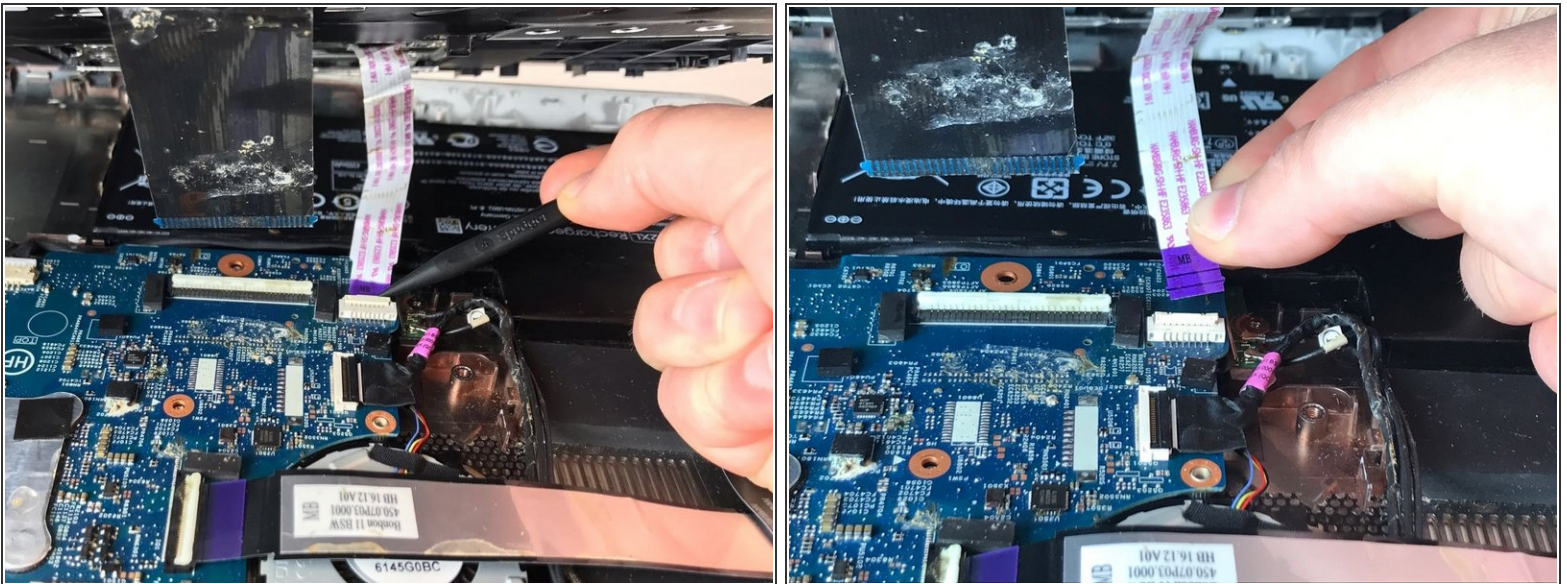
- Flip the laptop back over and open it; the keyboard should be facing upwards.
- Using the Plastic Opening Tool, separate the keyboard from the base of the laptop.
- ⚠ The keyboard is connected to the motherboard with cable ribbons, so be very gentle and careful when lifting the keyboard.

## Step 5



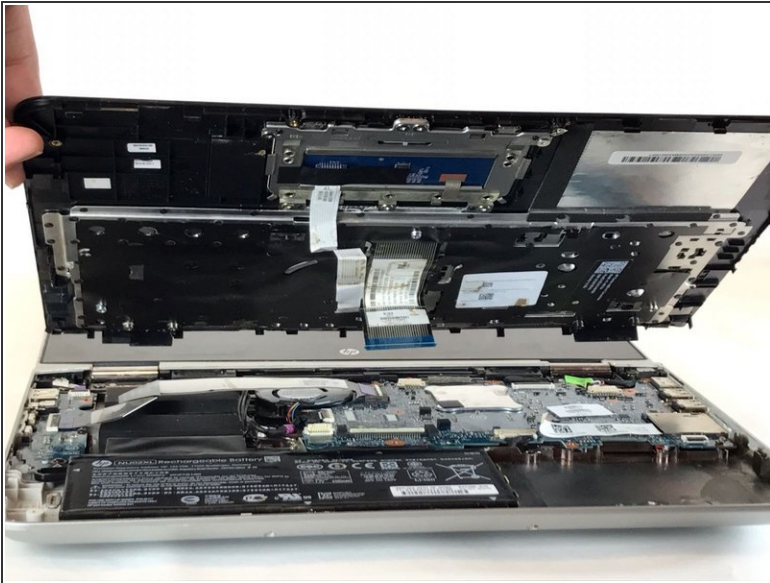
- Raising the keyboard, disconnect the first of two cable ribbons with the Heavy-Duty Spudger.
- Gently flip up the white plastic lock connecting the ribbon cable to the motherboard.
- Use the blue plastic tab on the ribbon cable to disconnect the ribbon cable from the lock.

## Step 6



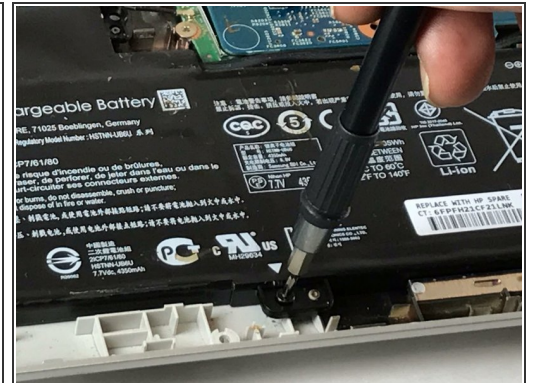
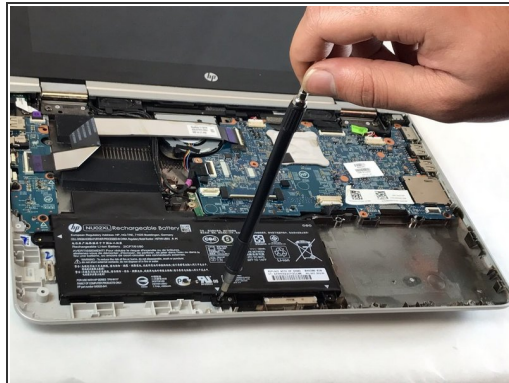
- Gently flip up the white plastic lock connecting the second ribbon cable to the motherboard with the Heavy-Duty Spudger.
- Use the blue purple tab on the ribbon cable to disconnect the ribbon cable from the lock.

## Step 7



- After the ribbon cables are disconnected, gently lift up the keyboard to disconnect it from the base of the laptop.

## Step 8 — Battery



- Remove the screws from the perimeter of the battery with a Phillips 00 Screwdriver.
- 3 Phillips 2.0 x 4.6 mm screws
- ⓘ Keep the different sized screws separate for future replacement.

## Step 9



- Holding the lower right corner, gently lift up the battery to disconnect it from the motherboard.

To reassemble your device, follow these instructions in reverse order.