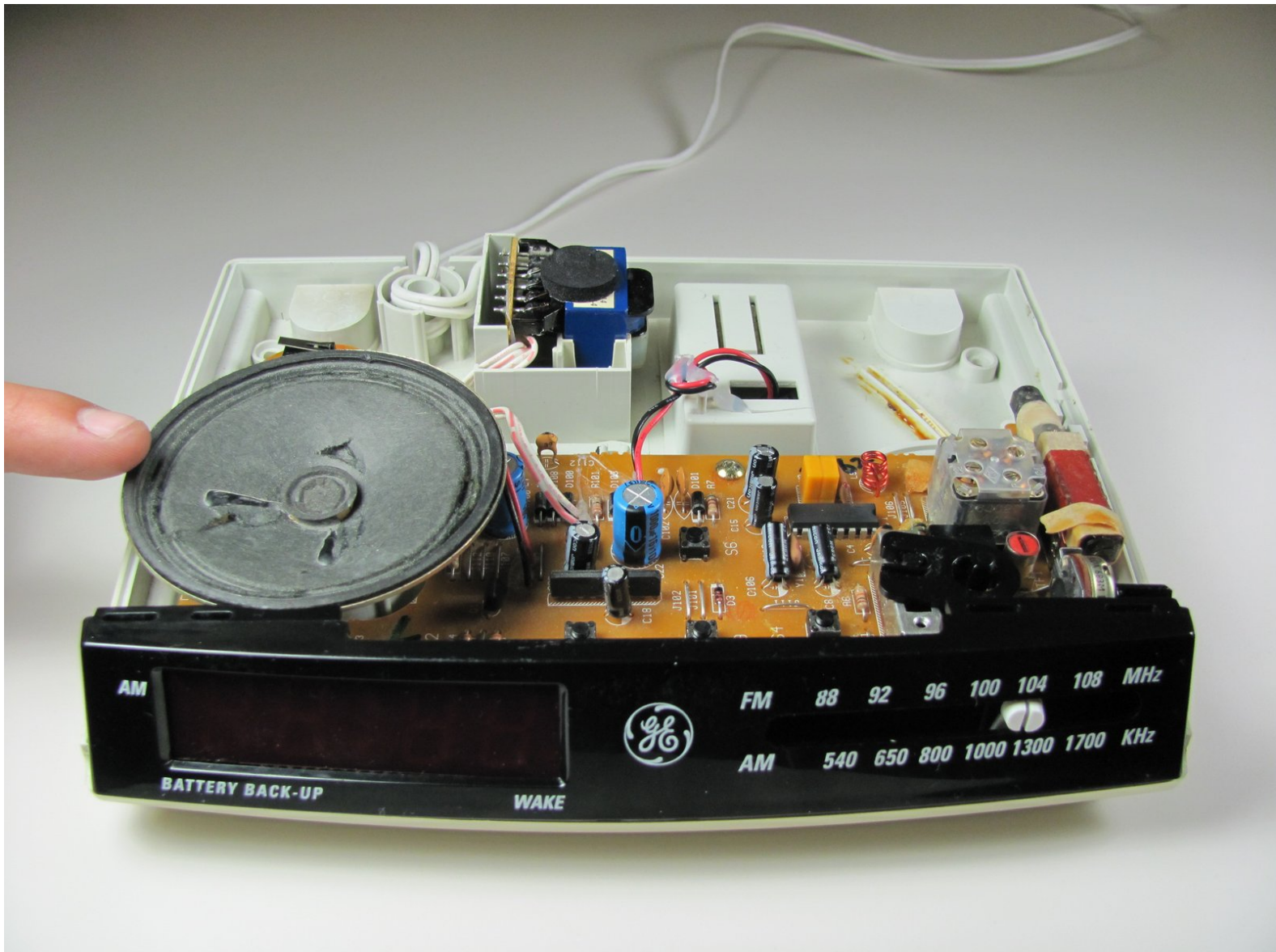




# General Electric Telephone 2-9710A Base Speaker Replacement

Replace speaker inside the base of the General Electric Telephone 2-9710A

Written By: Norberto Sanchez



---

## INTRODUCTION

This guide is to replace the speaker located inside the phone base

---

### TOOLS:

- [Wire Stripper](#) (1)
  - [Phillips #1 Screwdriver](#) (1)
  - [Flush Wire Cutters](#) (1)
  - [iFixit Opening Tools](#) (1)
  - [Soldering Iron](#) (1)
  - [Solder](#) (1)
-

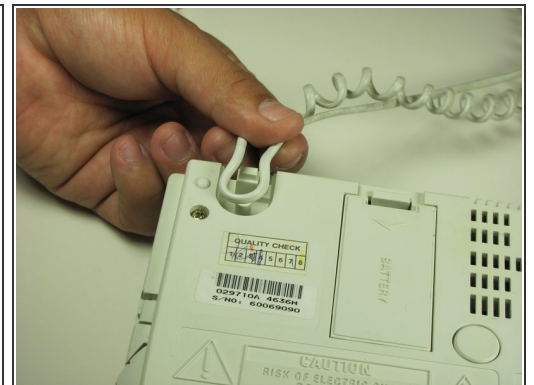
## Step 1 — Phone Cord



**!** Unplug the device before proceeding.

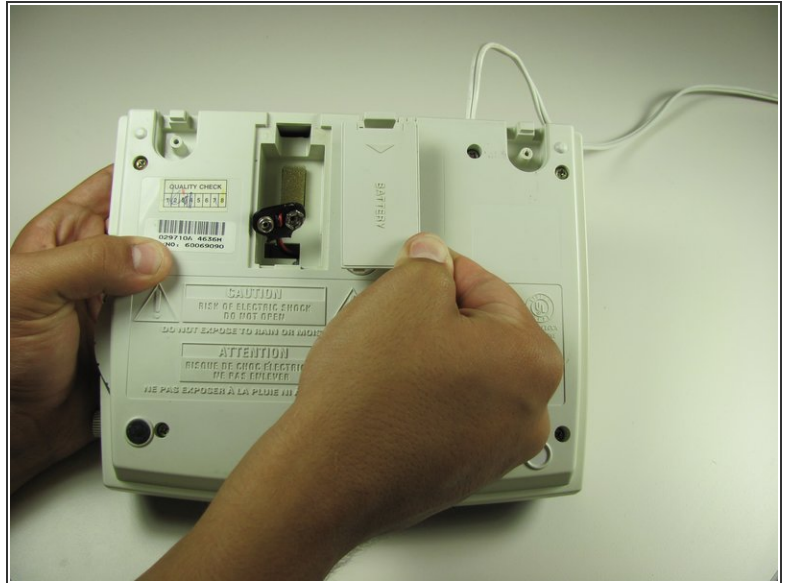
- Using a plastic opening tool, remove the phone cord from the phone jack from the base of the headset.

## Step 2



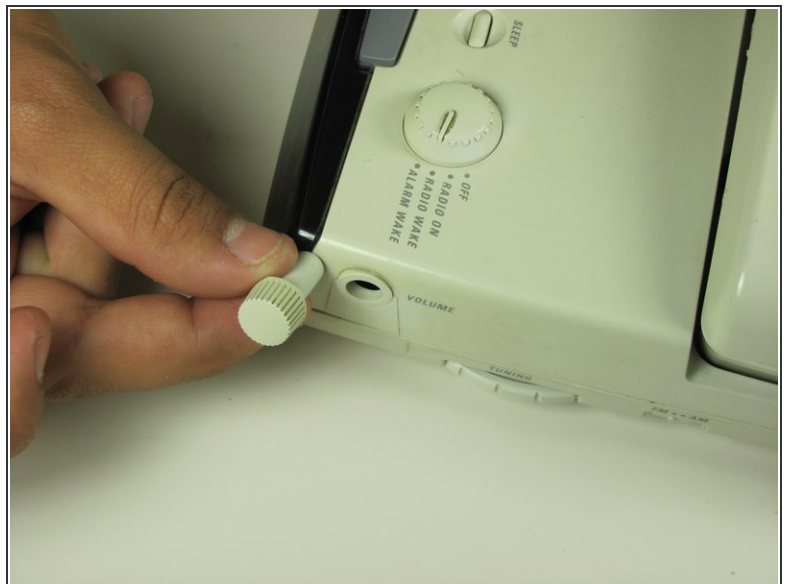
- Remove the phone cord screw cap.
  - Unscrew the 7.5mm screw.
- Remove the screw cap.
- Remove the cord from the phone base.

### Step 3 — 9V Base Battery



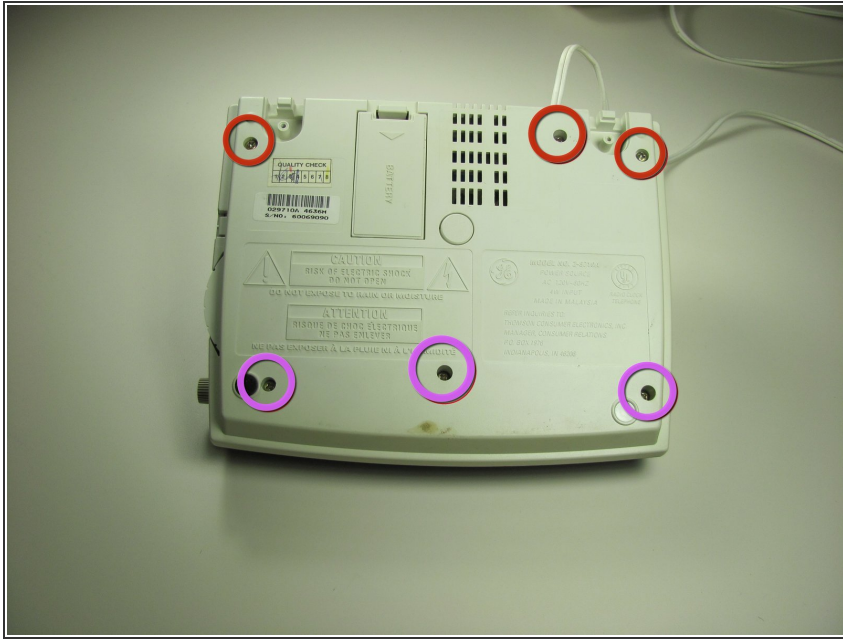
- Use finger to remove the battery cover.

### Step 4 — Base Shell



- Remove the Volume Dial by gently grasping the dial and pulling away from the base.

## Step 5



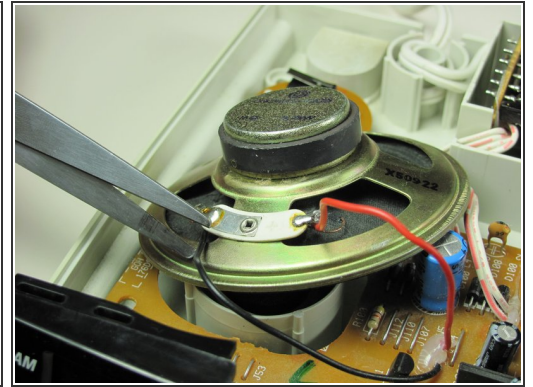
- Remove the 6 screws from the base shell.
- Remove the 3 12mm screws with the Philips head #1 screw driver.
- Remove the 3 18mm screws with the Philips head #1 screw driver.

## Step 6



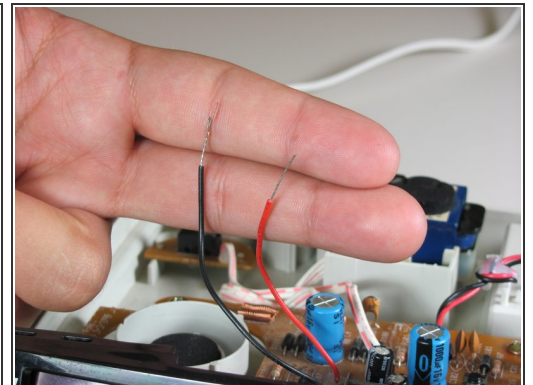
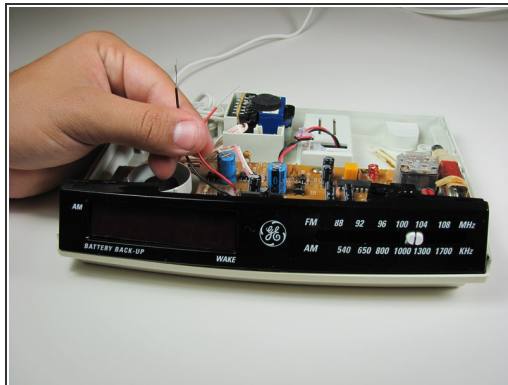
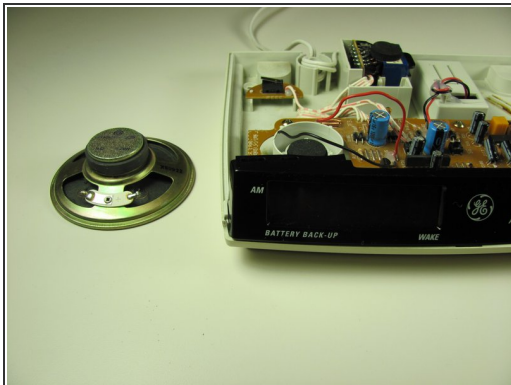
- Pry off the base shell using a Plastic Opener Tool.

## Step 7 — Base Speaker



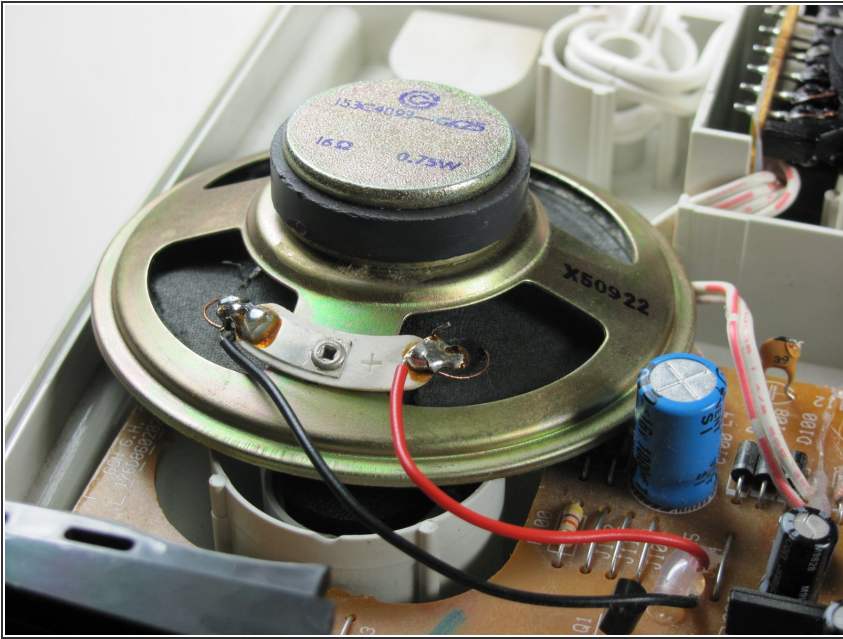
- Slightly pull out speaker.
- Cut wire as close as speaker as possible with wire cutters.
- Remove speaker.

## Step 8



- Strip the wire half an inch using wire strippers for a 24 gauge wire.

## Step 9



- Solder on the new speaker.
- Please visit [How to Solder](#) to learn more about soldering.

To reassemble your device, follow these instructions in reverse order.