



Gateway NE52214U Motherboard Replacement

This guide details how to remove the motherboard from the Gateway NE52214U.

Written By: Kelsey Rodrigues



INTRODUCTION

Is your computer experiencing significant problems with loading or booting up in general? Consider using this guide to replace the motherboard of your device. This guide will walk you through removing the motherboard, but when you remove the motherboard the fan will also be attached.

TOOLS:

- [Phillips #1 Screwdriver](#) (1)
 - [Phillips #00 Screwdriver](#) (1)
-

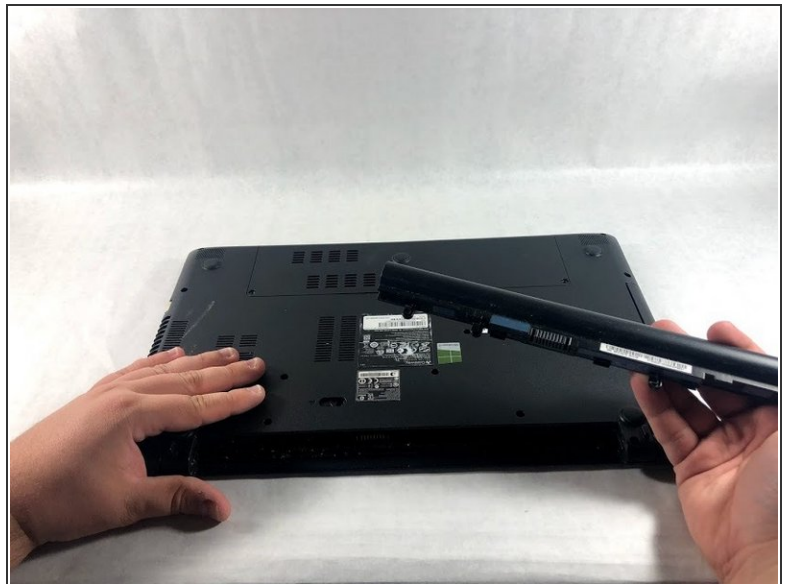
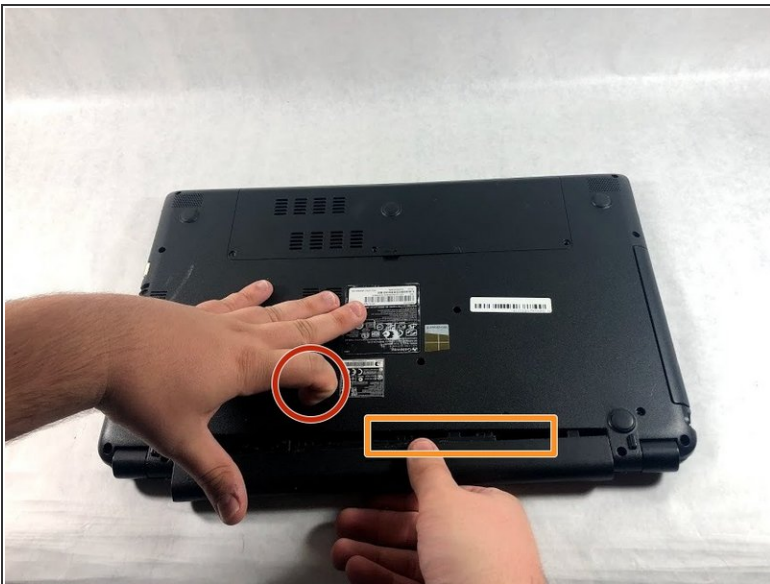
Step 1 — Battery



! Make sure to power down and turn off the laptop before proceeding with this guide.

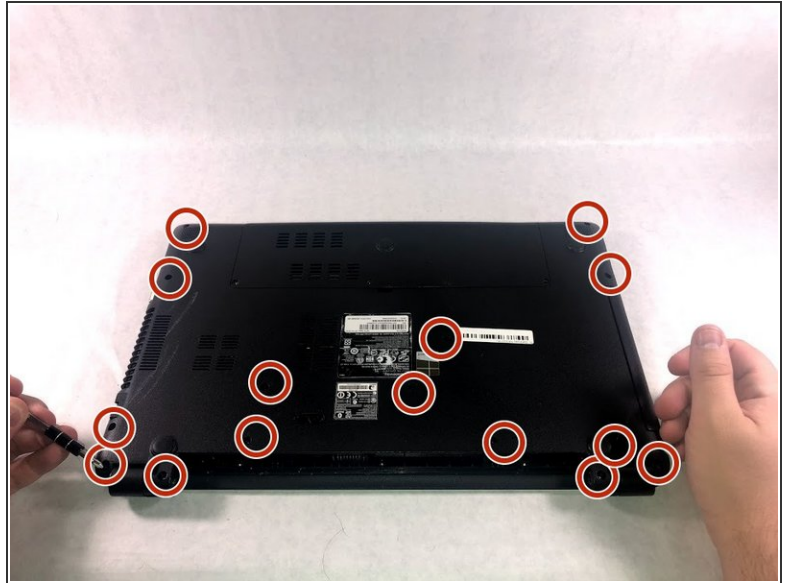
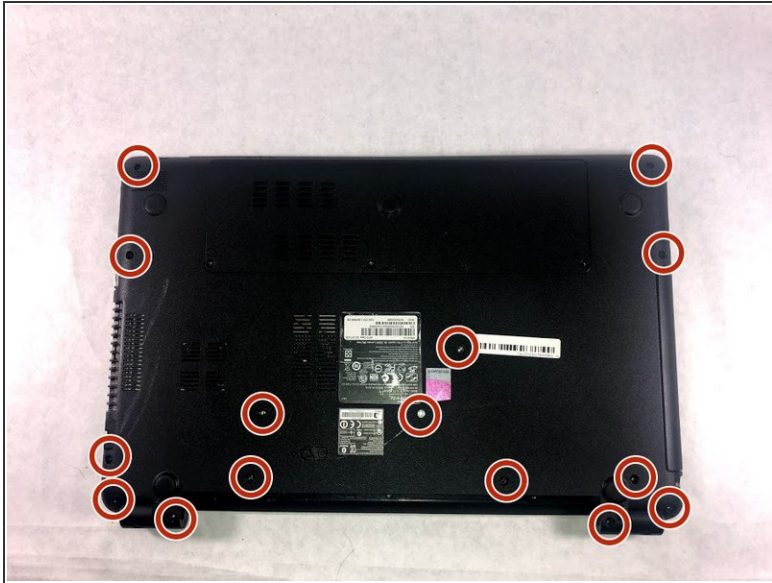
- Flip over the laptop.

Step 2



- Slide the tab to the left and hold the tab there.
- While holding down the sliding tab, remove the battery from the device.

Step 3 — Upper Case



- After removing the battery, remove 15 7mm screws using the Phillip #1 Screwdriver.

Step 4



- Flip over the laptop and open it so the screen is facing you.

Step 5



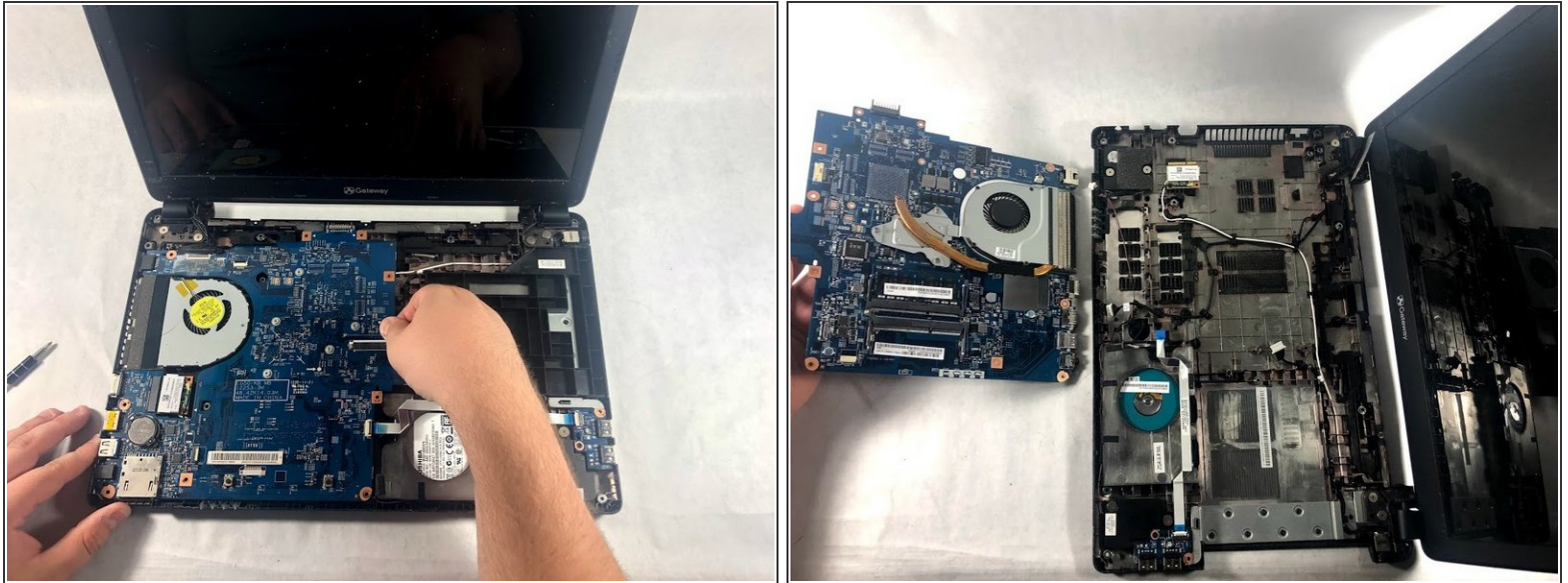
- Lift the upper case cover off of the device. Use a prying tool along the edges if necessary.

Step 6 — Motherboard



- Remove the twelve 3mm screws using the Phillips #00 screwdriver.

Step 7



- Gently lift and remove the motherboard off of device.
- ⓘ This will also remove the fan from the device but it will remain attached to the motherboard.

To reassemble your device, follow these instructions in reverse order.