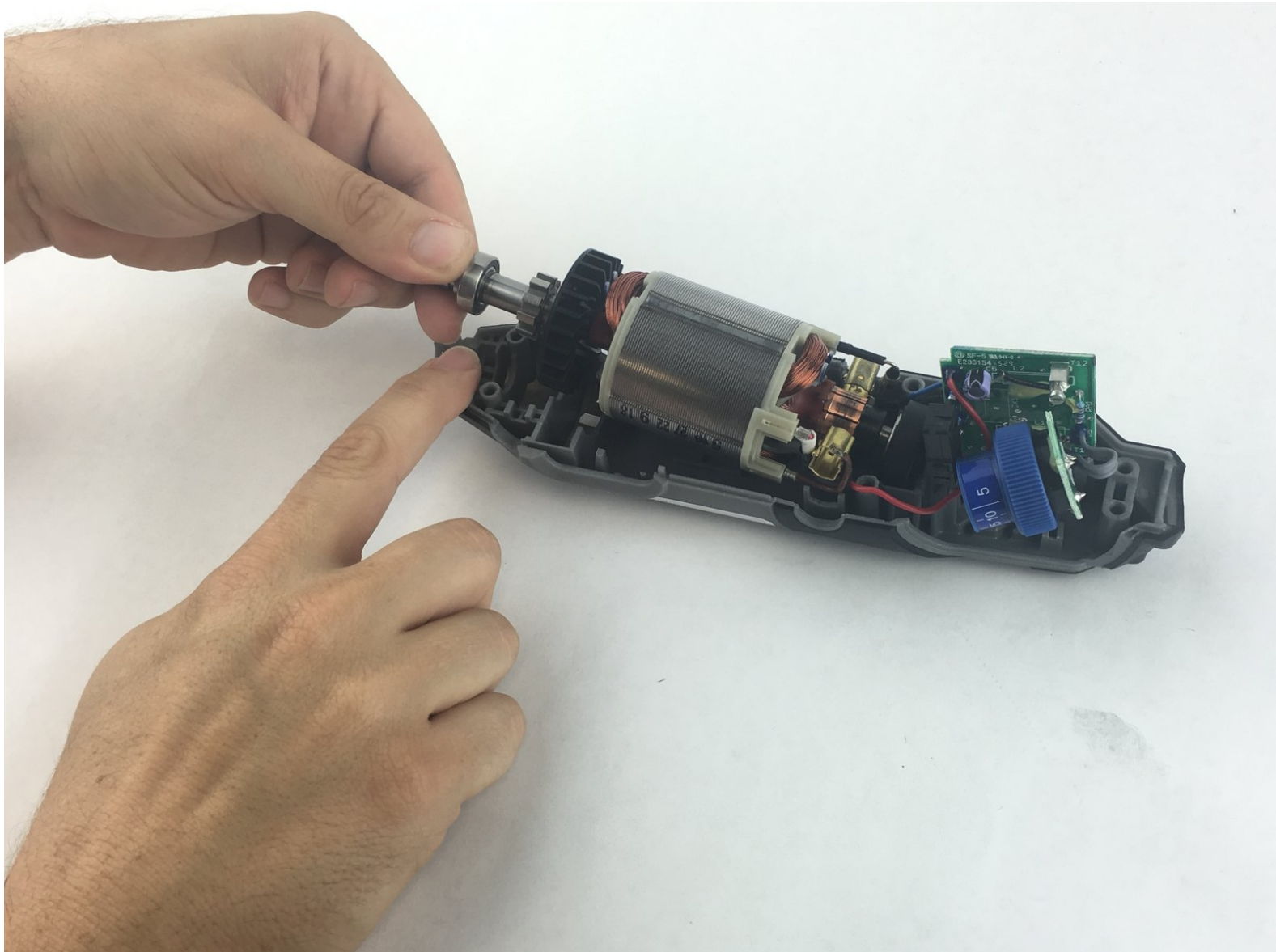




Dremel 4000 Bearing Assembly Replacement

This guide will show the replacement of the entire Bearing assembly.

Written By: Eugene



INTRODUCTION

If bearings are worn or if fan is damaged, the replacement of the entire bearing assembly is required. After opening the case, the bearing assembly can be lifted out by hand.

TOOLS:

- [Flathead 3/32" or 2.5 mm Screwdriver](#) (1)
- [iFixit Opening Tools](#) (1)
- [T15 Torx Screwdriver](#) (1)

PARTS:

- [Bearing assembly \(Armature\)](#) (1)

Step 1 — Back Case



- Start by removing the housing cap by unscrewing it.
- Next, unscrew the now exposed collet nut while holding down the shaft lock button.
- ⓘ To remove the collet nut, you may need to use the small open-end wrench provided with the Dremel.

Step 2



- Using your hands, carefully remove hanger from casing.

Step 3



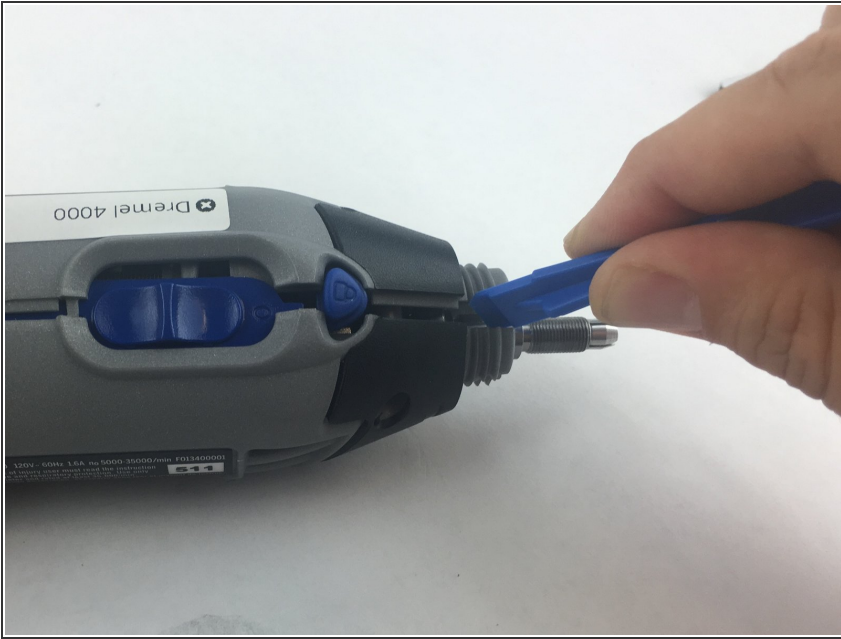
- Remove the brush caps (one on each side) by using a flathead screwdriver bit.
- ⓘ The brush caps are spring loaded.

Step 4



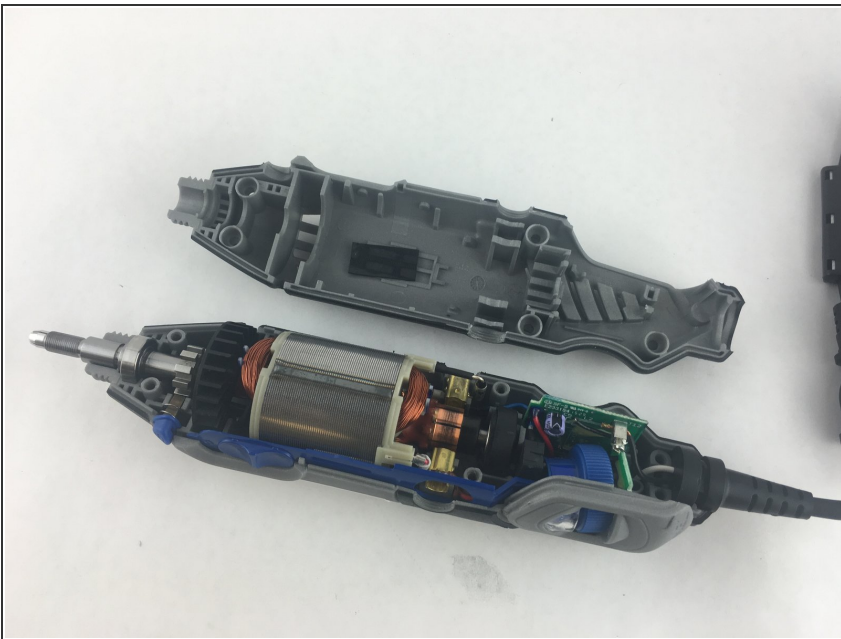
- Using the Torx 15 screwdriver tip, remove the 5 screws (12.5 mm) that hold the casing together.

Step 5



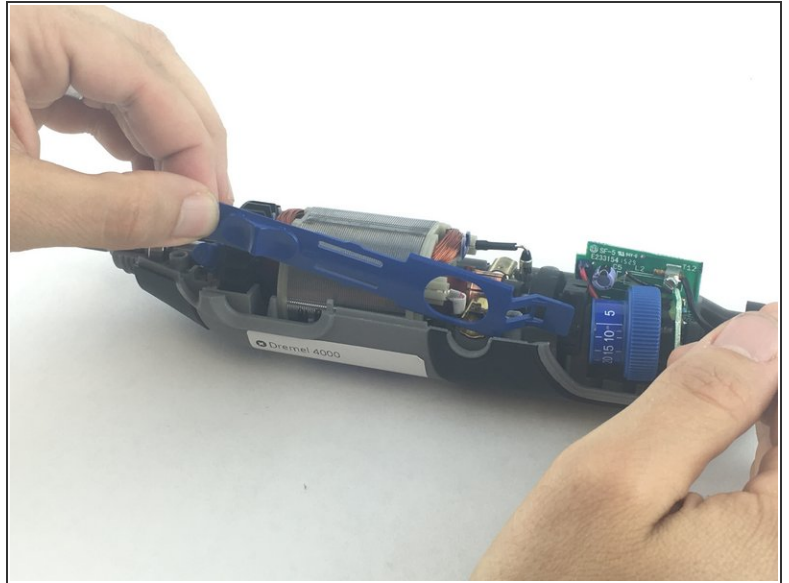
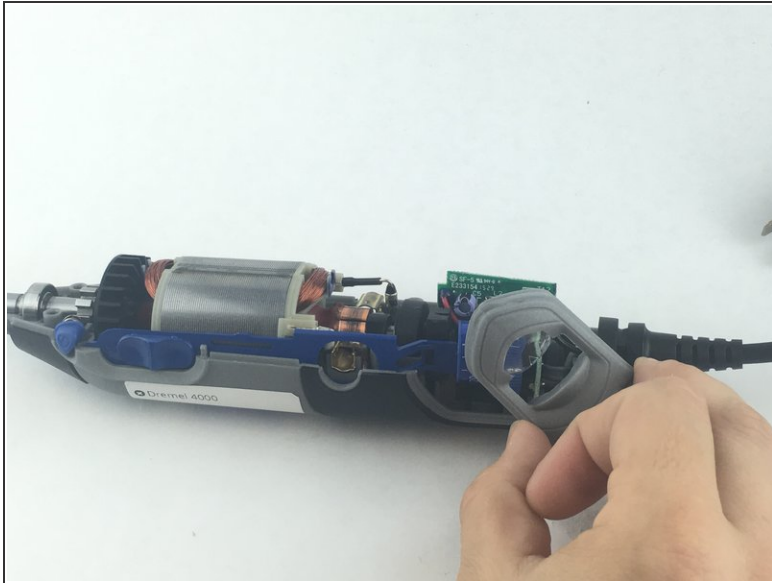
- Use a plastic opening tool to gently wedge apart the hard plastic threads.

Step 6



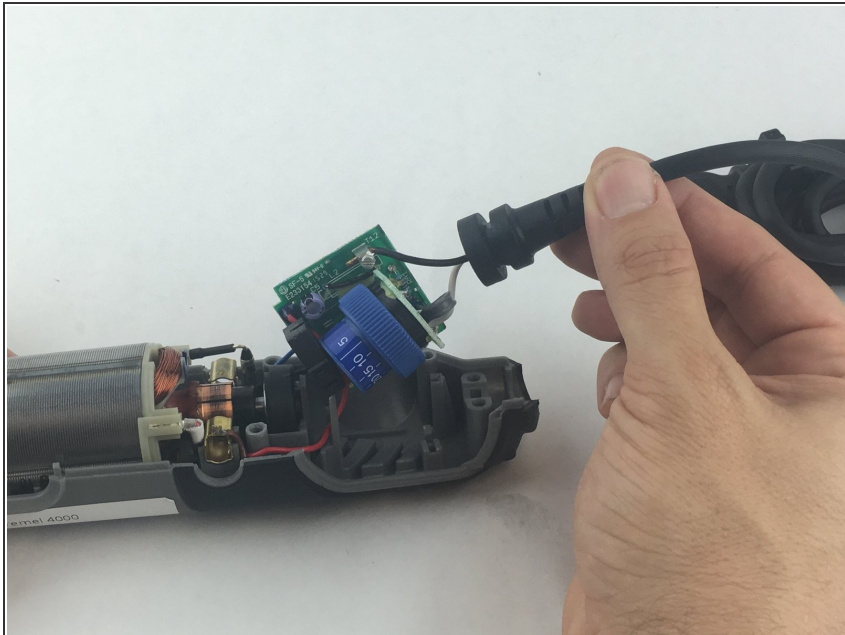
- Use your hands to carefully remove the back casing so that none of the components fall out.

Step 7 — Power Cord



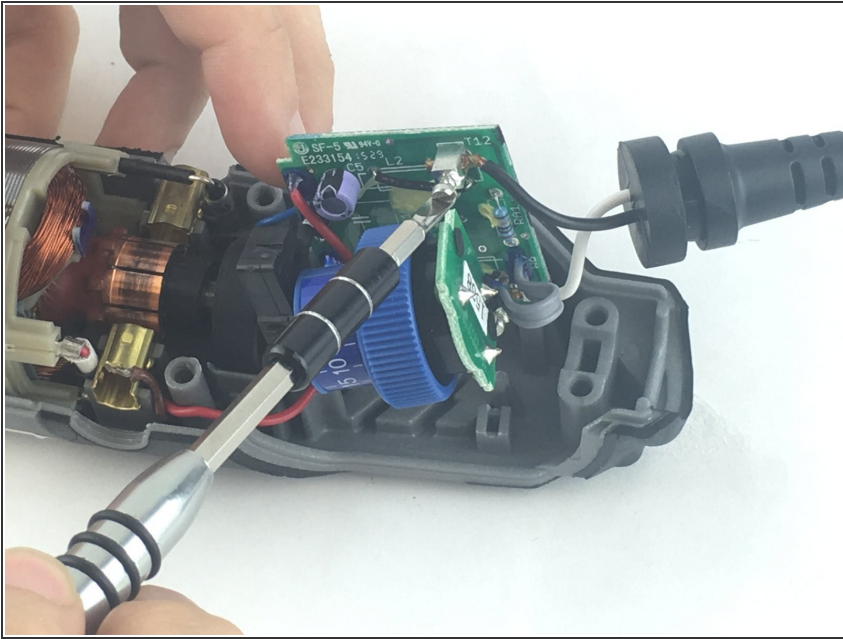
- To clear access to the electrical assembly, remove the variable speed dial cap and blue power lever, and set them aside.

Step 8



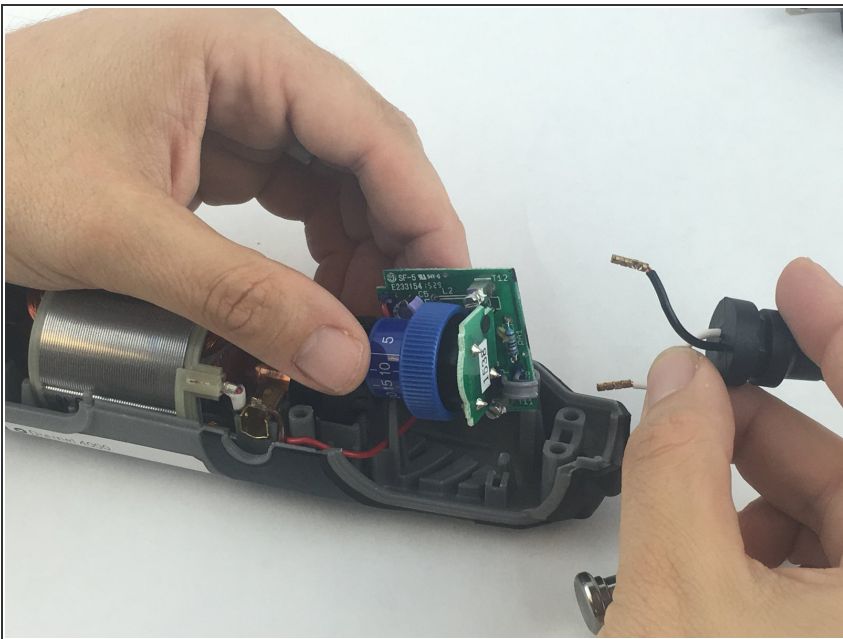
- Using your fingers, carefully pull the circuit board from the casing. This will make it easier to remove the power cord.

Step 9



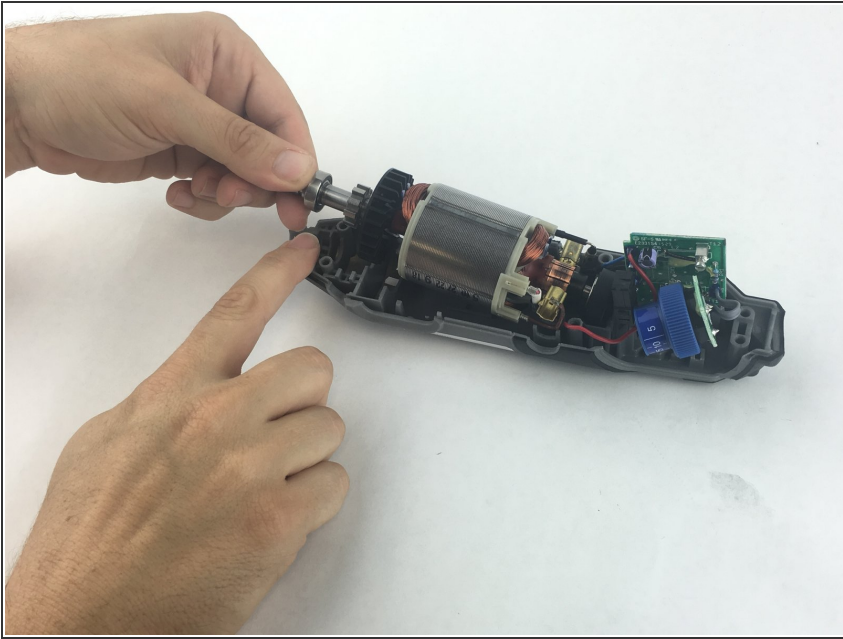
- Each wire is fed through a small opening on the circuit board and held with a flat head screw.
- Loosen the screw just enough to remove the wire by gently pulling it with your hand.

Step 10



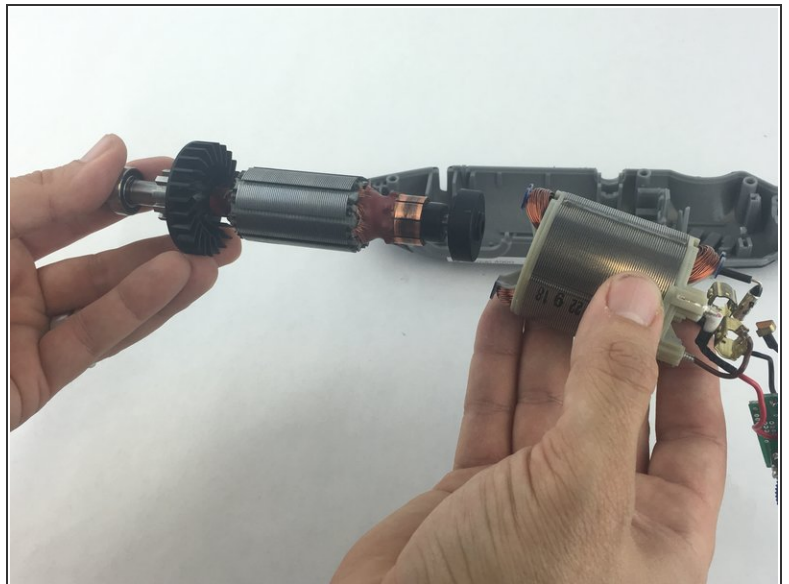
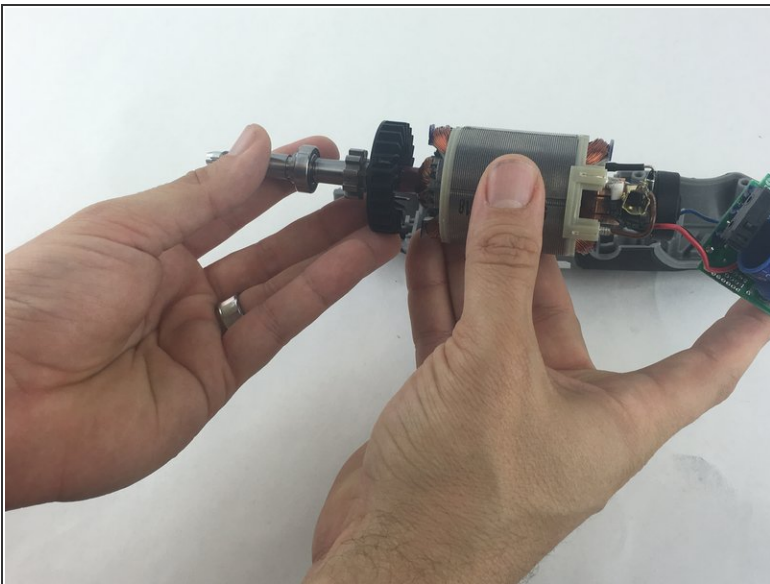
- Carefully remove both wires from circuit board with your hands.
- ⓘ Take careful note of which side has the black wire and which has the white wire.

Step 11 — Bearing Assembly



- Carefully pull up on the shaft to lift out of the casing.

Step 12



- Firmly hold the field assembly in one hand and the bearing assembly in the other.
- Carefully slide the bearing assembly out of the field assembly.

To reassemble your device, follow these instructions in reverse order.