



# Disassembling Nokia 3395 Inner Components

Written By: Nico Lee



---

## INTRODUCTION

We will now disassemble the guts of the phone, including the SIM card reader, vibrating unit, power toggle button, audio speaker, power assembly/microphone, and the battery connector.

---

### TOOLS:

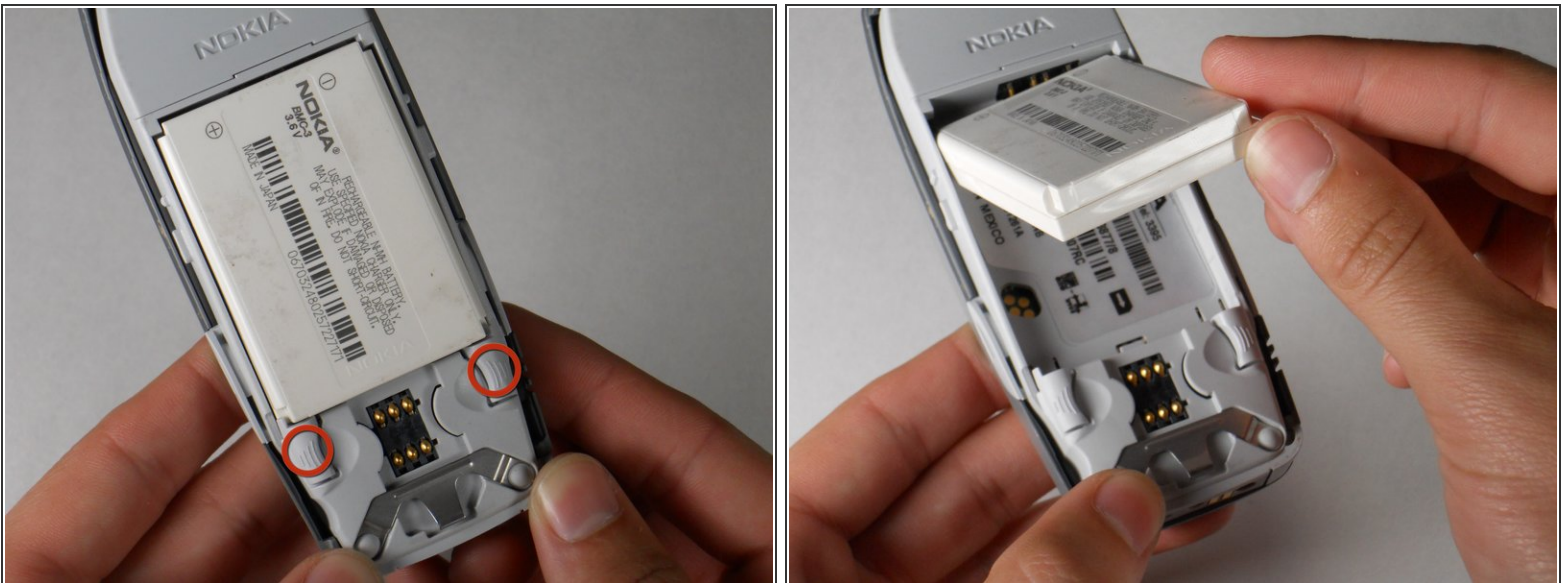
- [Spudger](#) (1)
  - [T6 Torx Screwdriver](#) (1)
-

## Step 1 — Back Case



- Hold the phone and push the white button with your thumb.
- While pressing the button, slide the back plate up (towards the top of the phone) and off the phone.

## Step 2 — Disassembling Nokia 3395 Battery



- Locate grey buttons beneath battery (shown).
- Spread buttons simultaneously away from each other and the battery will pop out.
- Remove battery from phone.

### Step 3 — Front Case



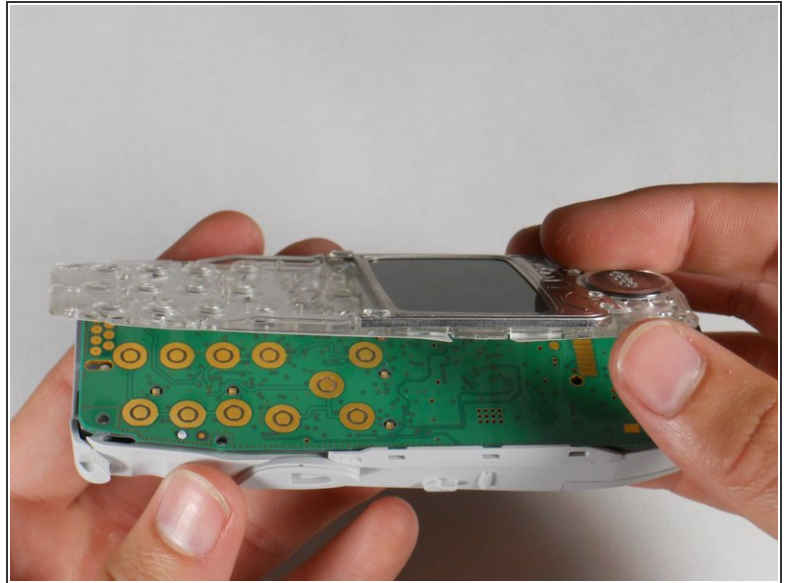
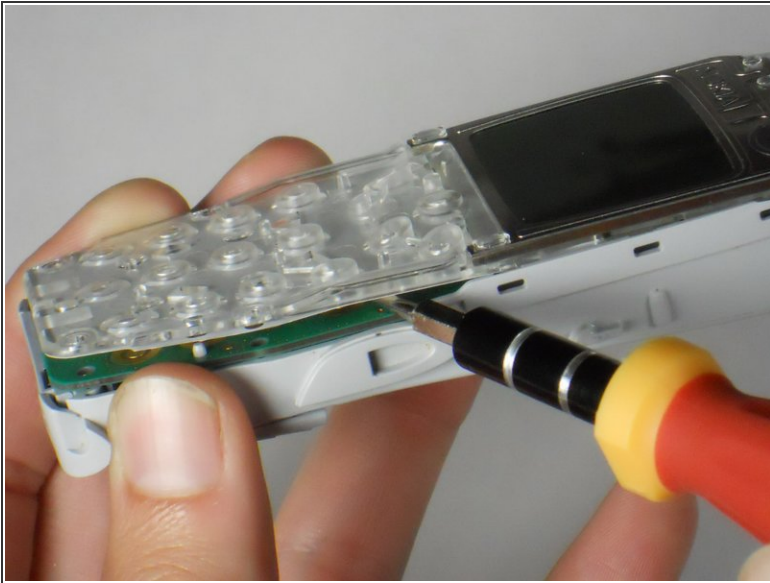
- Where shown, spread the front faceplate and push forward.
- Flip over the device, and pry the faceplate away.

### Step 4 — Screen



- Remove six T6 screws.

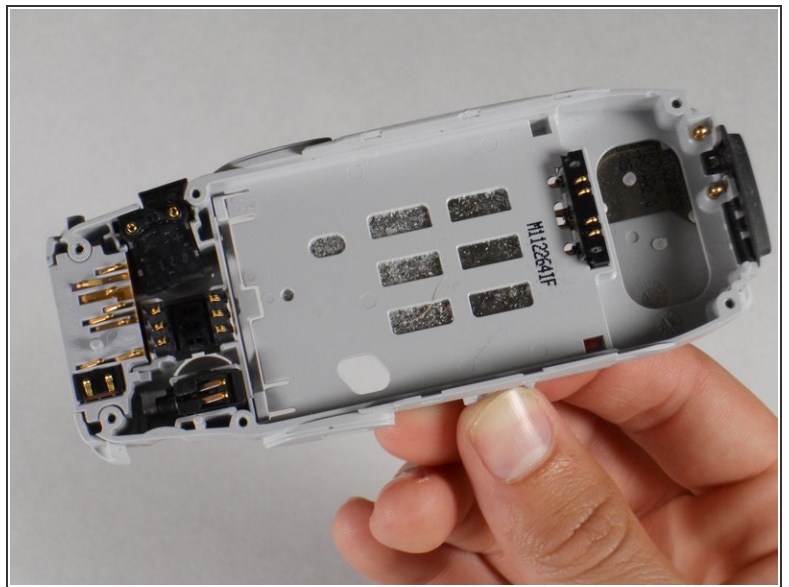
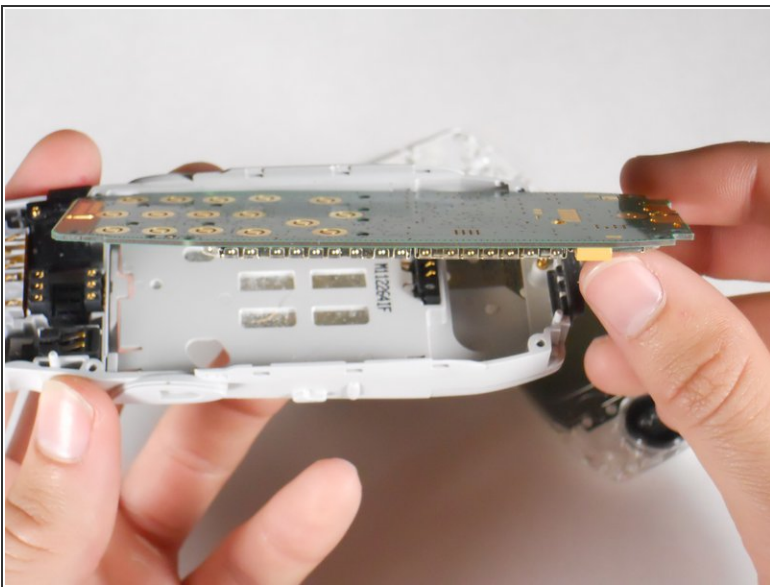
## Step 5



- Insert spudger between screen assembly and phone body.

⚠ Spread apart as shown. Avoid damaging the screen assembly by removing the screen slowly.

## Step 6 — Logic Board



- Remove logic board as shown.

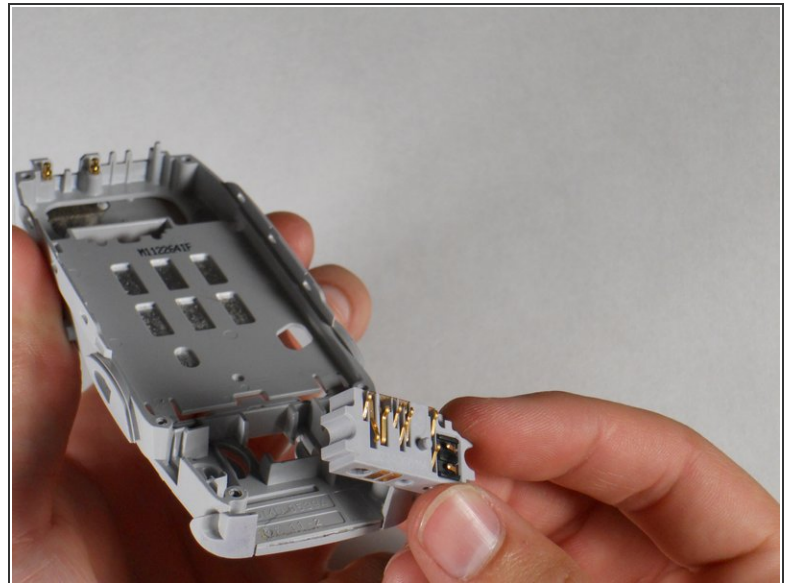
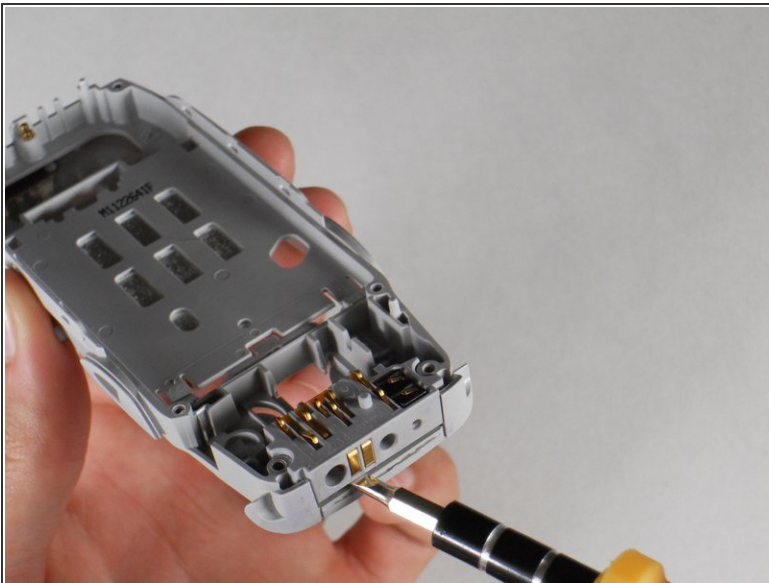
## Step 7 — Inner Components



Use the following legend to locate each component:

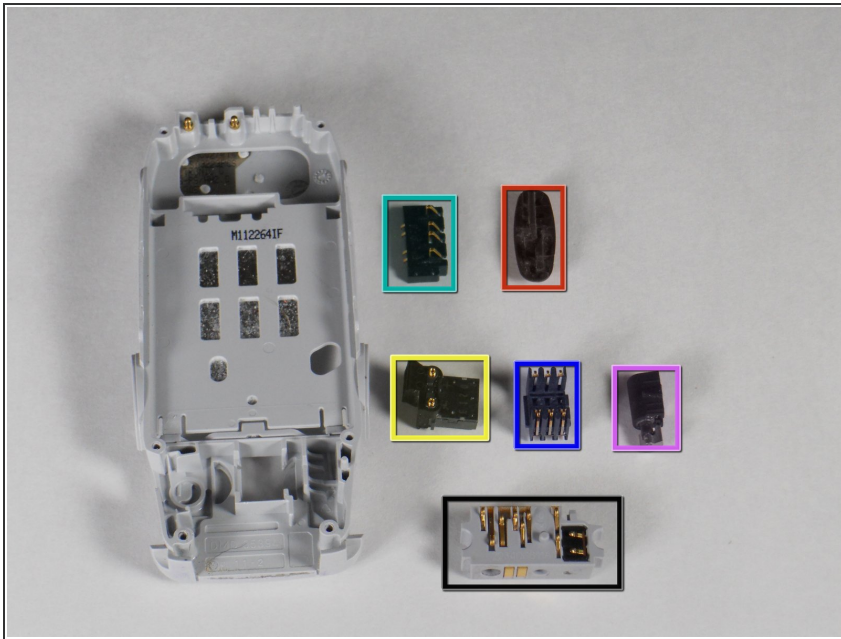
- Microphone/power assembly.
- Vibrating unit.
- SIM card reader.
- Audio speaker.
- Power toggle button.
- Battery connector.

## Step 8



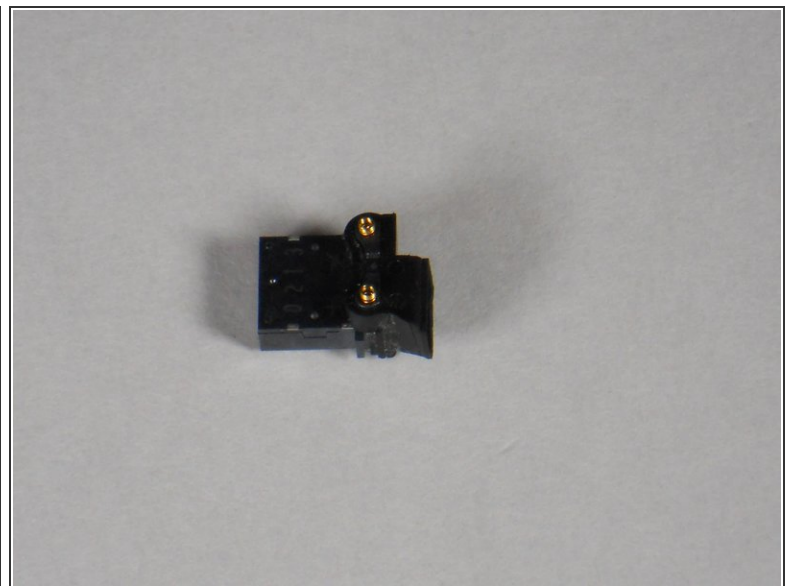
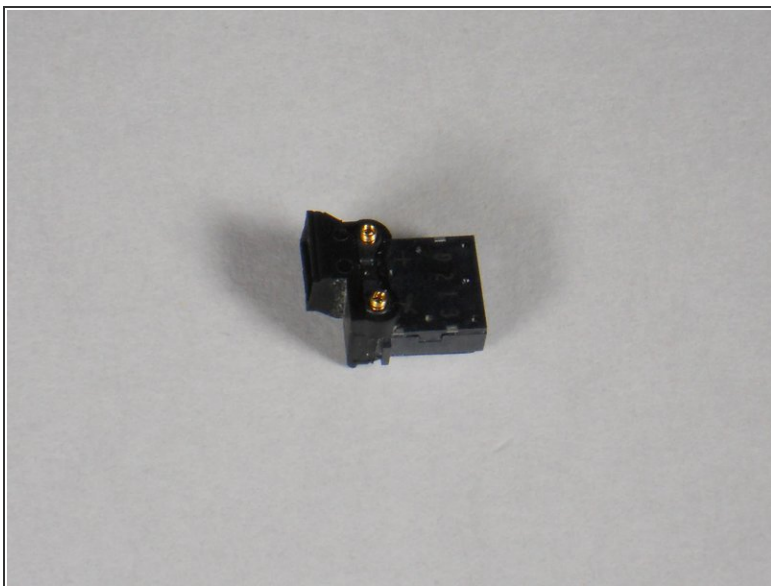
- Insert spudger between power assembly/micro-phon and phone body.
- Pry as shown and remove the power assembly/microphone.

## Step 9



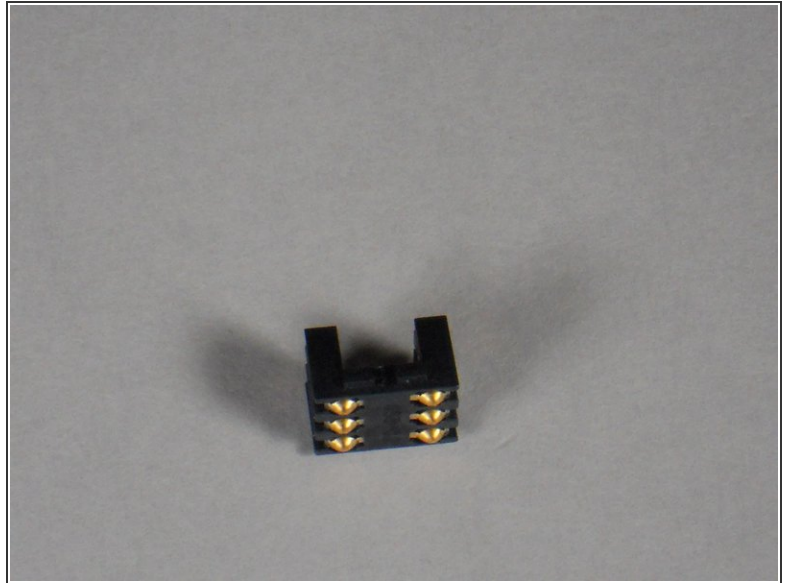
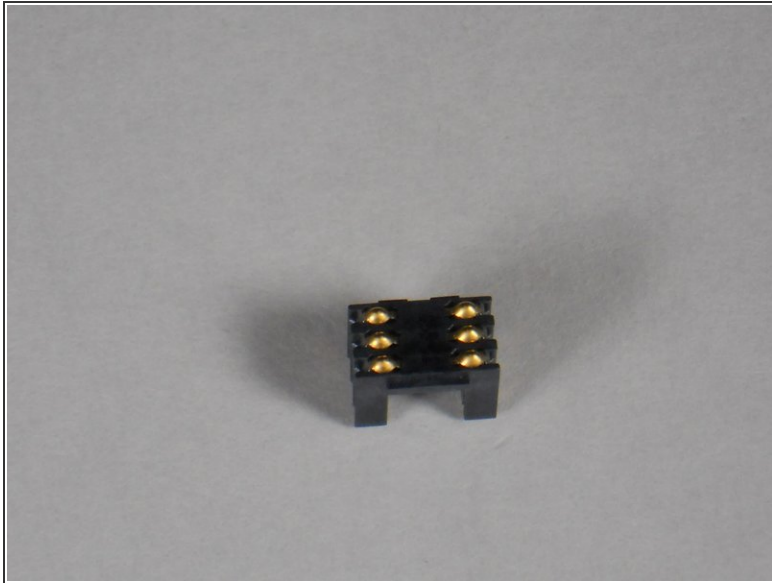
- i** Once located, the following components are easily removed by pulling them out with your hand.
- Microphone/power assembly.
  - Vibrating unit.
  - SIM card reader.
  - Audio speaker.
  - Power toggle button.
  - Battery connector.

## Step 10



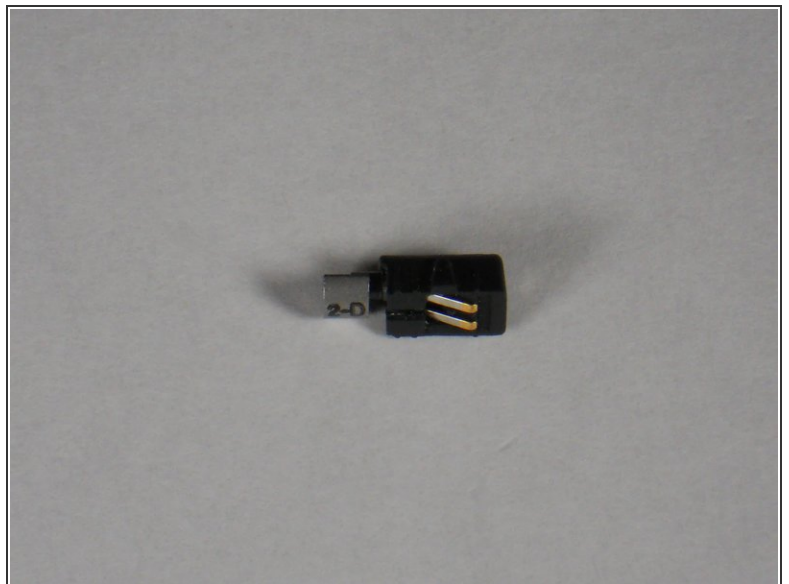
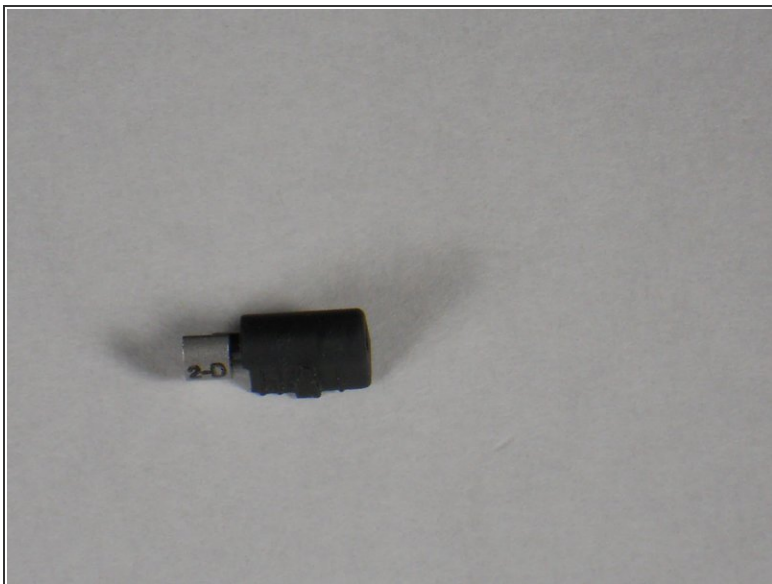
- Audio speaker.

## Step 11



- SIM card reader.

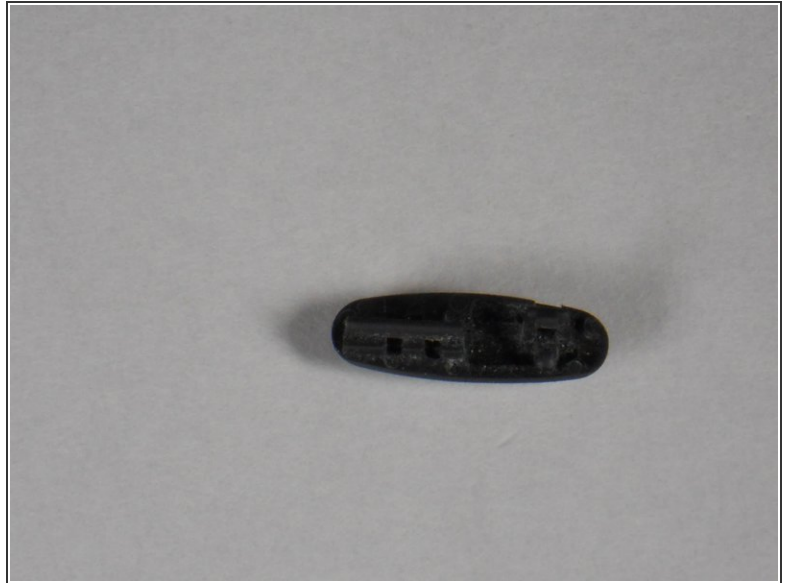
## Step 12



- Vibrating unit.

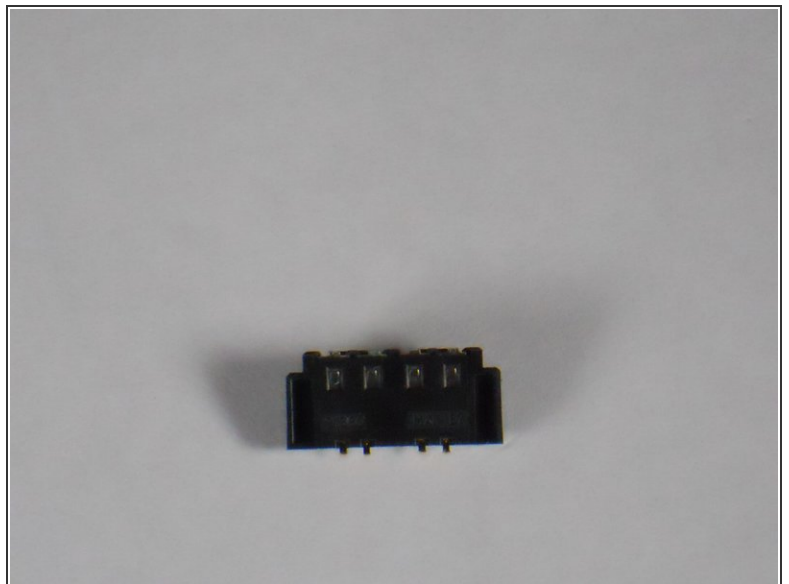
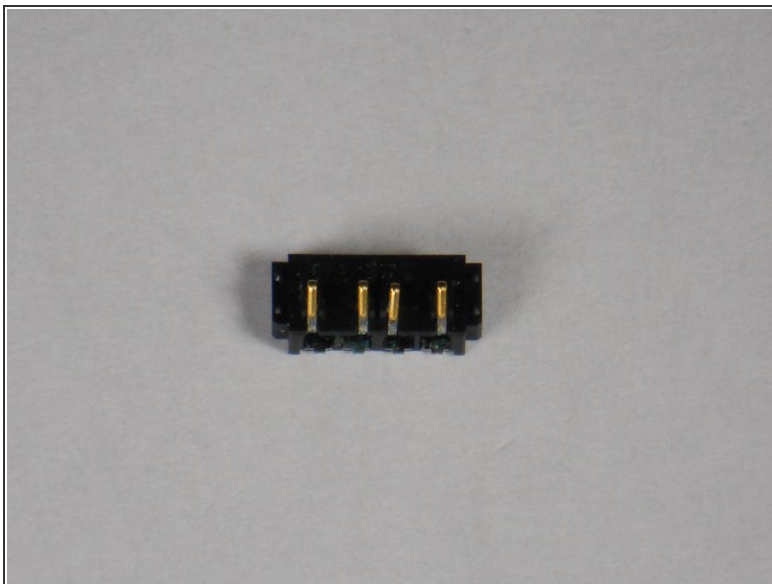


## Step 13



- Power toggle button.

## Step 14



- Battery connector.

To reassemble your device, follow these instructions in reverse order.