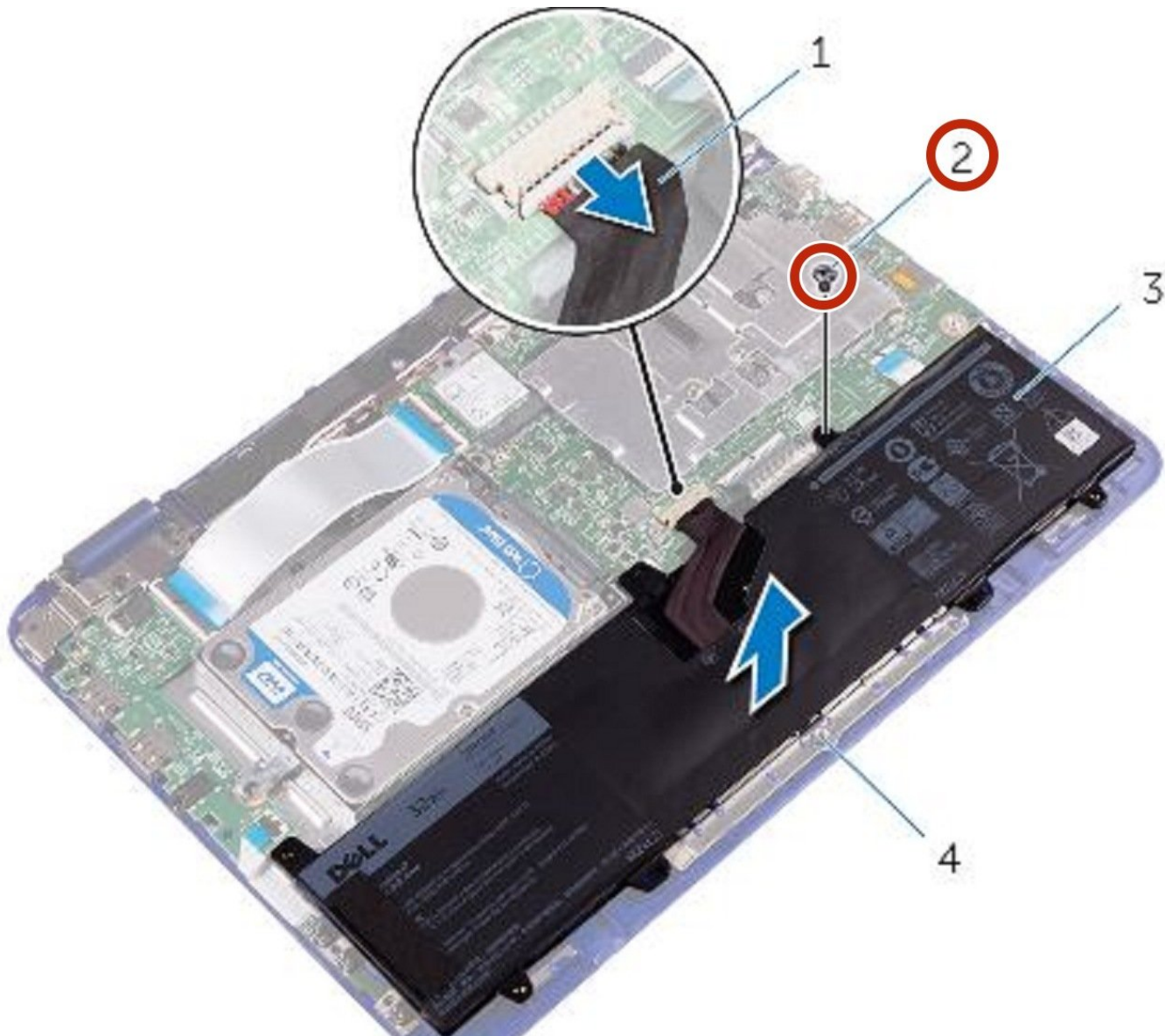




# Dell Inspiron 11 3169 Battery Replacement

Written By: Terrence15



---

## INTRODUCTION

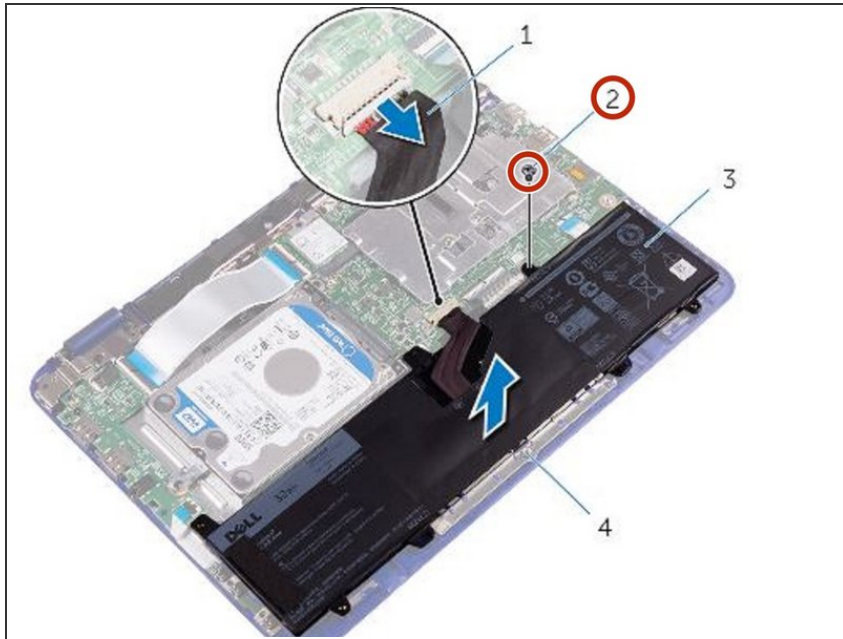
In this guide, we will show you how to remove and replace the Battery.

---

### TOOLS:

- [Phillips #0 Screwdriver](#) (1)
-

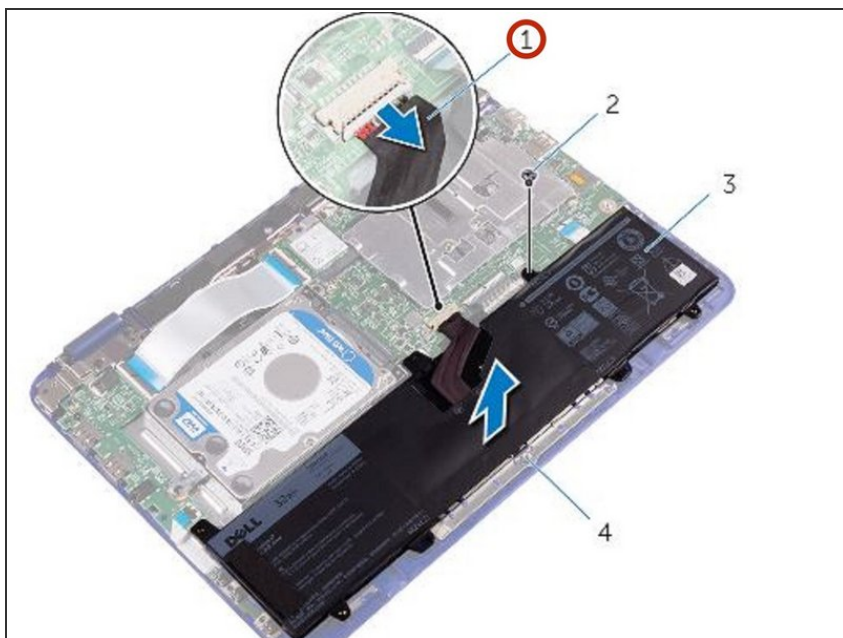
## Step 1 — Remove the Screw



**⚠ WARNING:** Before working inside your computer, read the safety information that shipped with your computer and follow the steps in [Before working inside your computer](#). After working inside your computer, follow the instructions in [After working inside your computer](#).

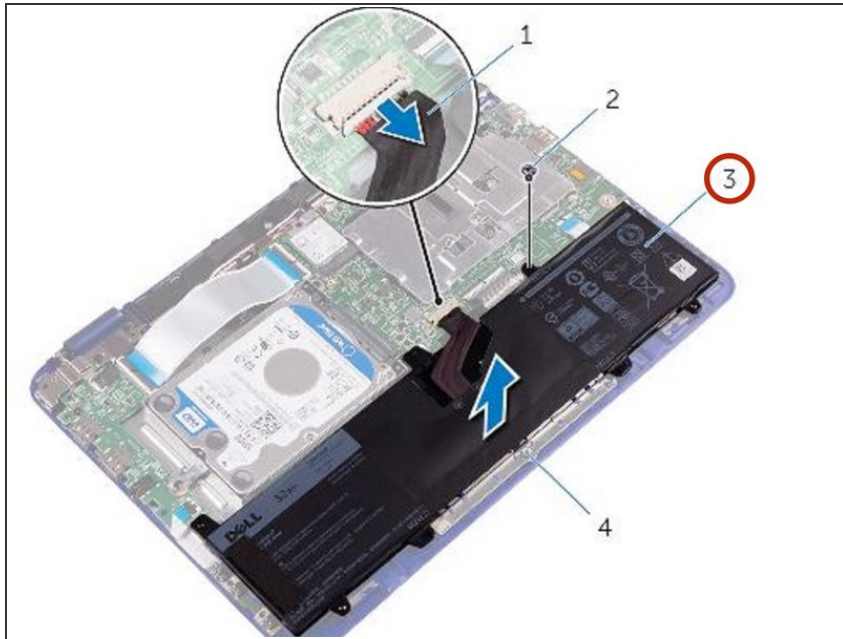
- Remove the screw that secures the battery to the palm-rest and keyboard assembly.

## Step 2 — Disconnecting the Battery Cable



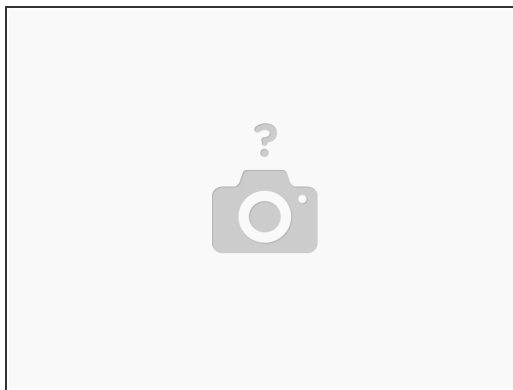
- Disconnect the battery cable from the system board.

### Step 3 — Lifting the Battery



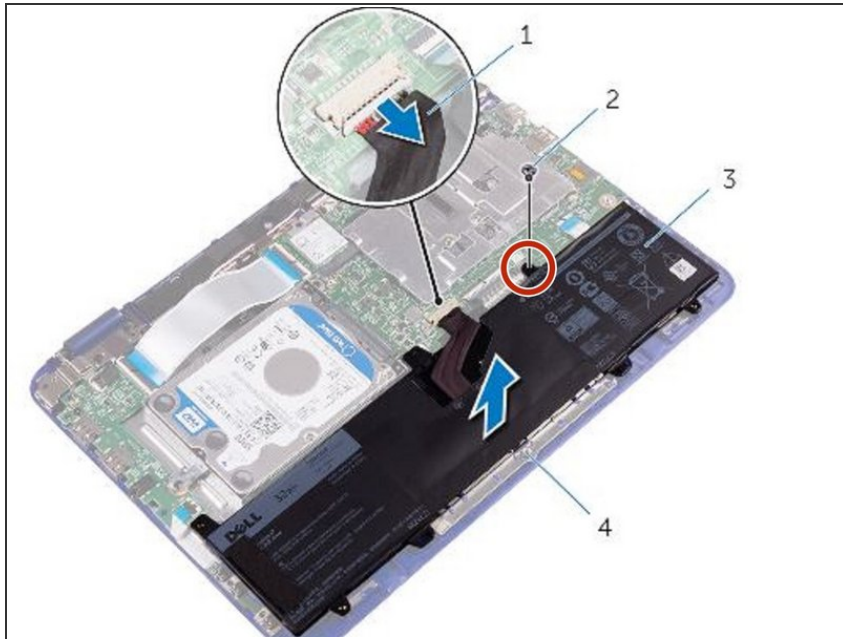
- Lift the battery off the palm-rest and keyboard assembly.

### Step 4 — Grounding the System Board



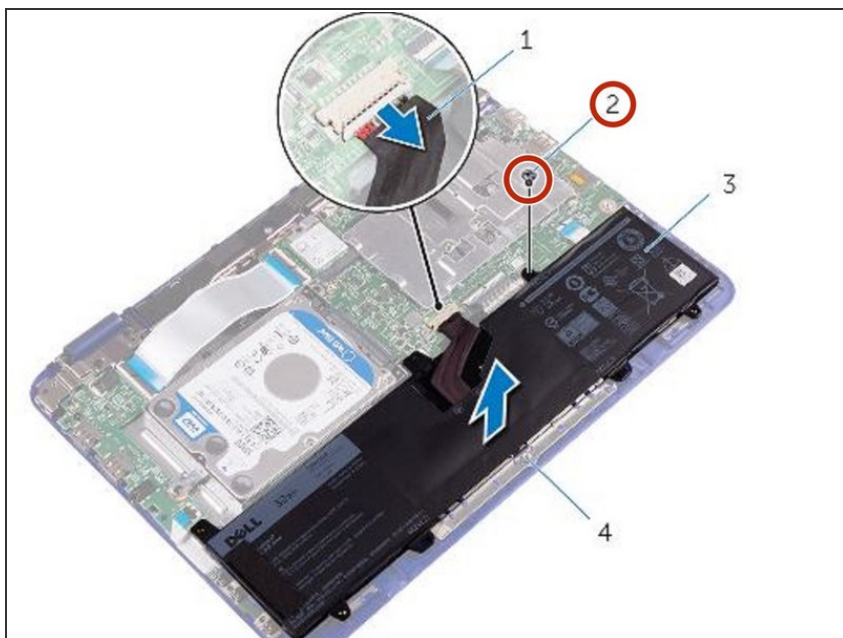
- Turn the computer over.
- Press and hold the power button for 5 seconds to ground the system board.

## Step 5 — Align the Screw Hole



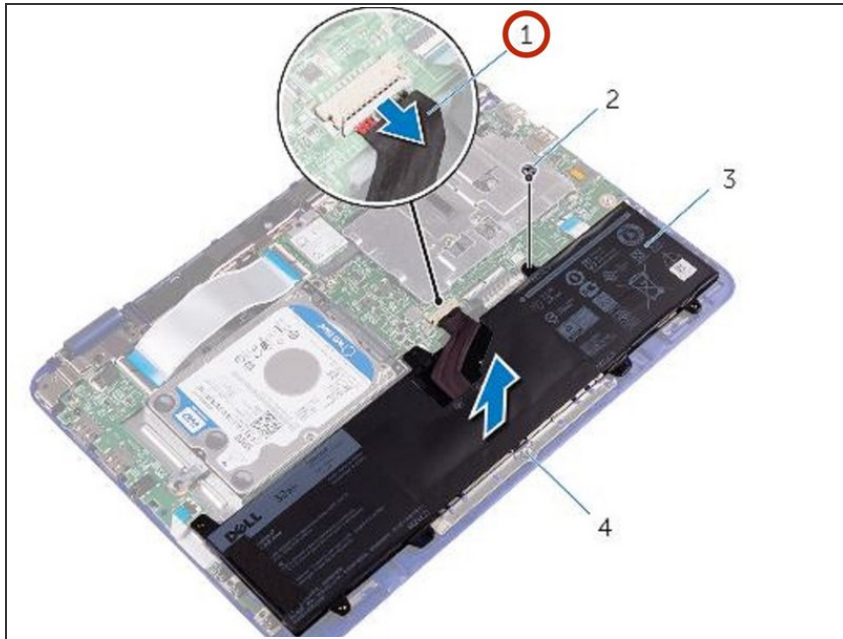
- Align the screw hole on the battery with the screw hole on the palm-rest and keyboard assembly.

## Step 6 — Replace the Screw



- Replace the screw that secures the battery to the palm-rest and keyboard assembly.

## Step 7 — Connecting the Battery Cable



- Connect the battery cable to the system board.

To reassemble your device, follow these instructions in reverse order.