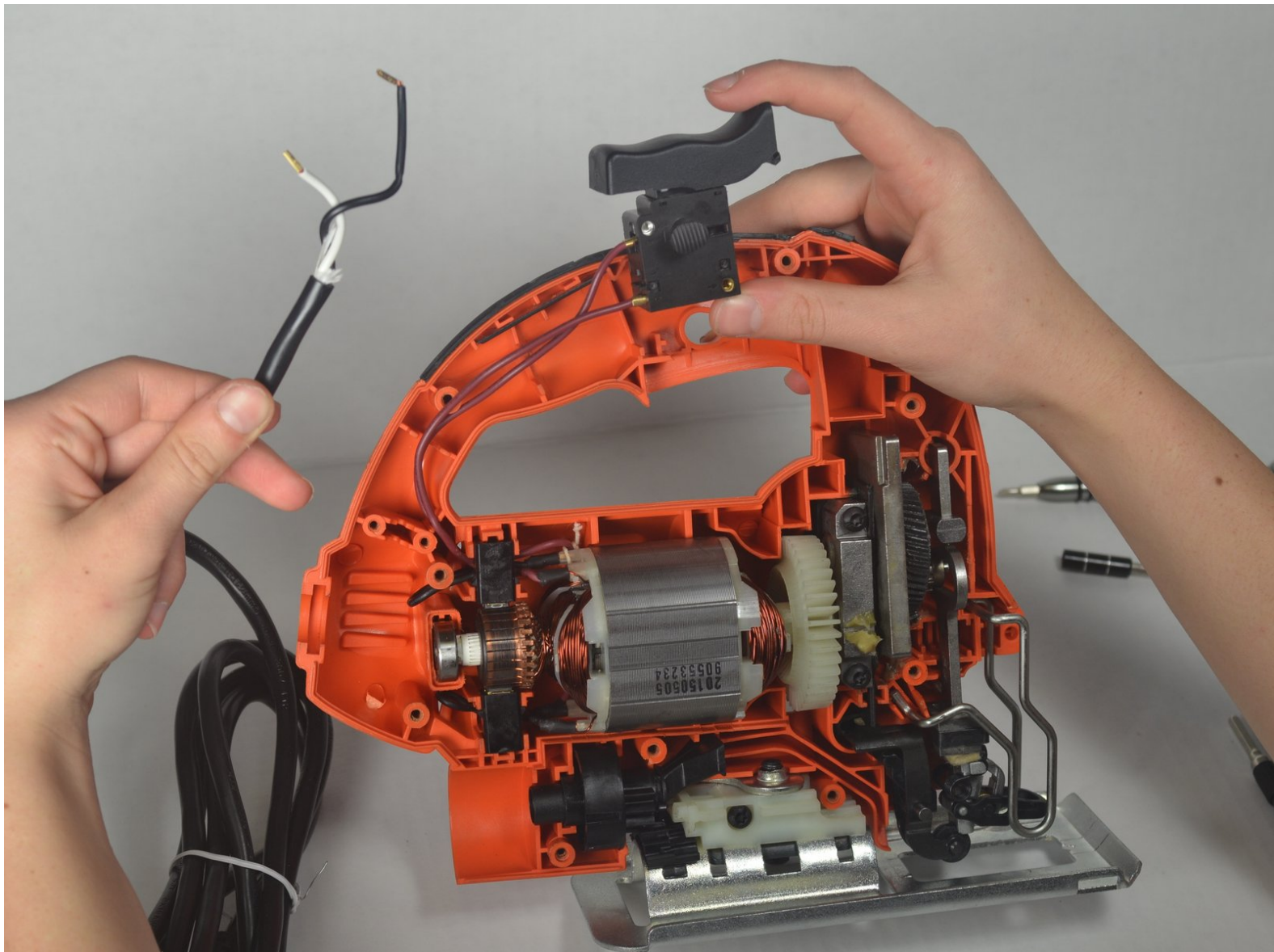




Black and Decker JS660 Power Cord Replacement

This guide will show how to replace a severed or detached cord.

Written By: matt murray



INTRODUCTION

This guide shows the owner how to replace the power cord on their jig saw if it is cut or damaged. It is a very common way to render the saw useless. luckily the fix is quite easy.

TOOLS:

- [T15 Torx Screwdriver](#) (1)
- [Phillips #2 Screwdriver](#) (1)

PARTS:

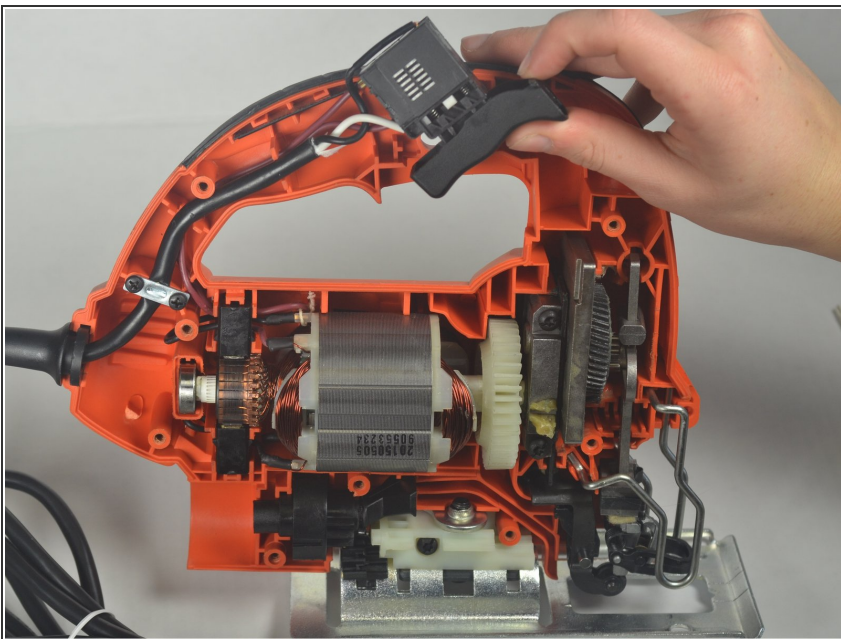
- [Cord Set](#) (1)

Step 1 — Housing Disassembly



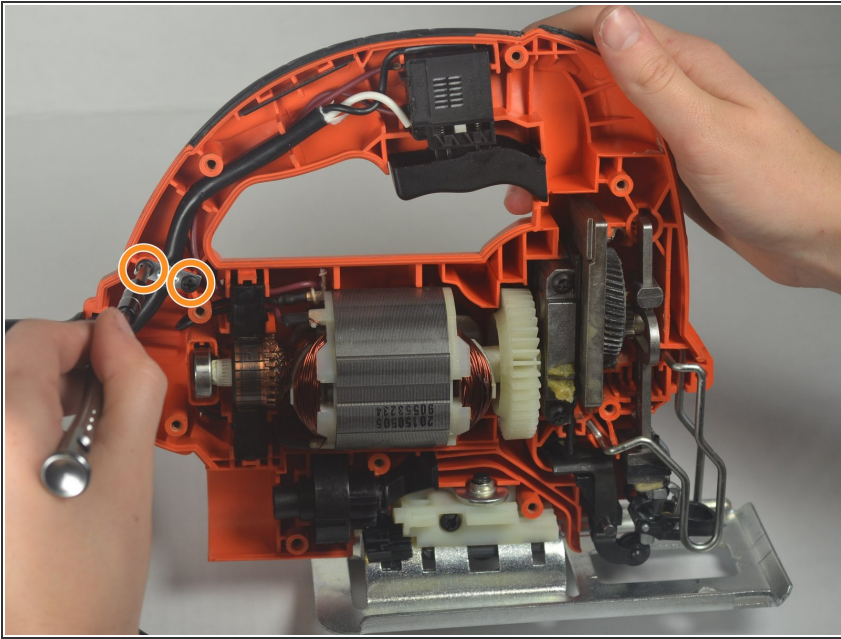
- Remove the nine torx 15.875mm screws on the front of the jigsaw using a T-15 torx screwdriver.

Step 2



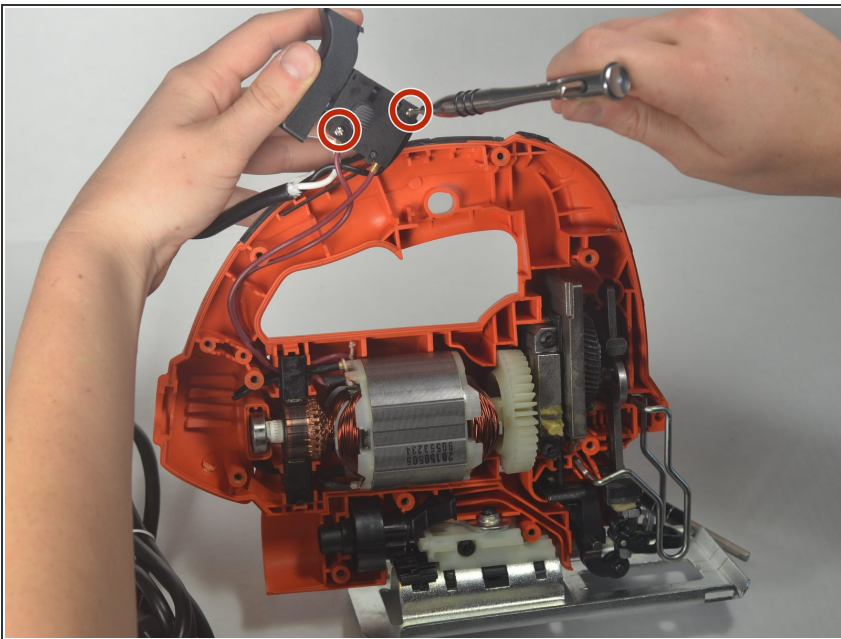
- By separating the two housing halves, carefully remove the top plate.

Step 3 — Power Cord



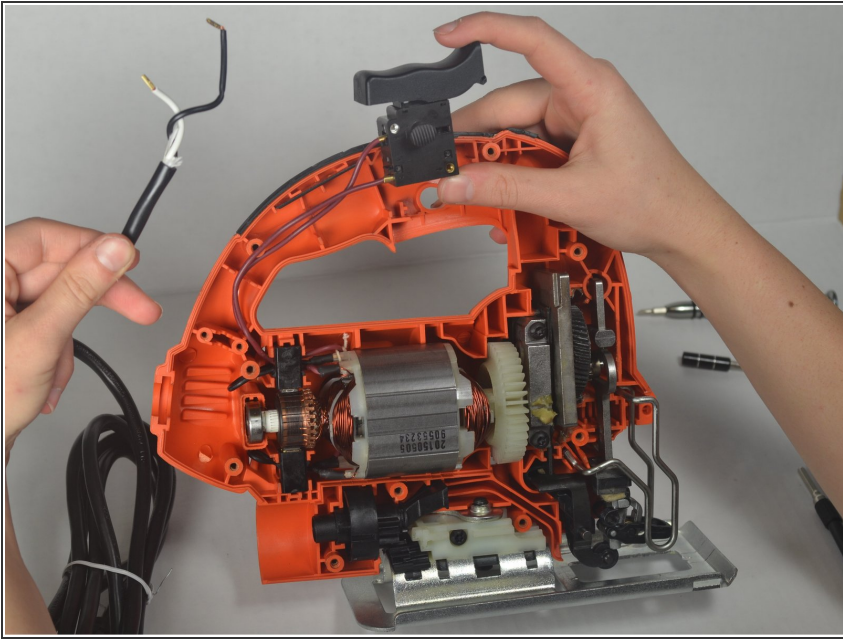
- Remove the two 12.7mm phillips head screws holding the power cord in place with a PH2 Phillips head screwdriver.

Step 4



- Remove the two 6.35mm flat head screws on the trigger with a 2.5 flat head screwdriver to disconnect the white and black cords.

Step 5



- Gently remove the black and white cord from the trigger assembly.

To reassemble your device, follow these instructions in reverse order.