



# August Smart Lock Accelerometer Replacement

The accelerometer is a key part of the August Smart Lock as it works with the motor to turn the device.

Written By: William Fink



## INTRODUCTION

The accelerometer is important to making sure the August Smart Lock can rotate with the motor. This guide will teach how to take out the accelerometer from within the device.

---

### TOOLS:

- [Tweezers](#) (1)
- [Phillips #0 Screwdriver](#) (1)

## Step 1 — Accelerometer



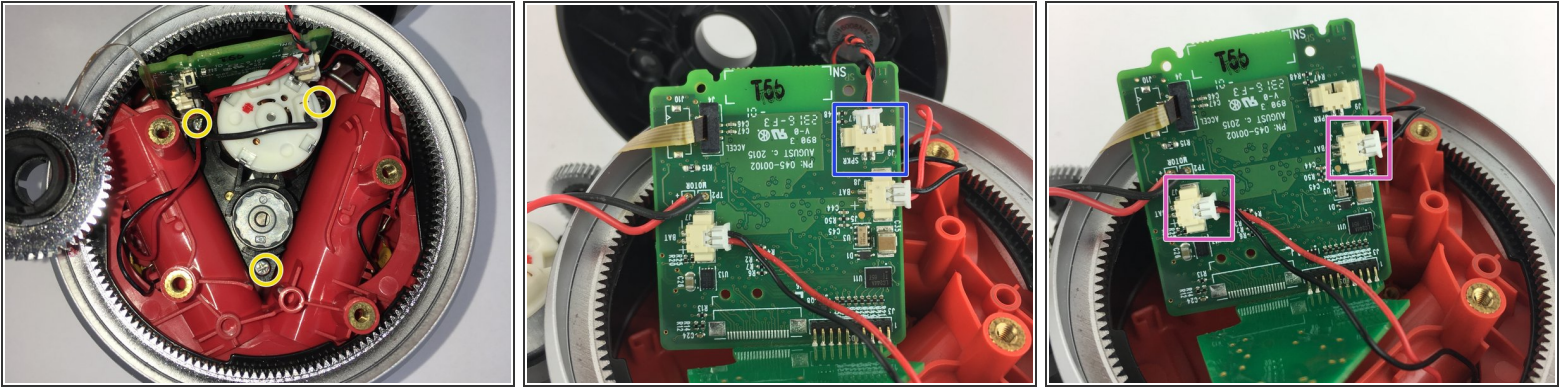
- Flip device over so the black bottom is facing you.
- Undo latches on both sides to remove the metal cover.
- Using a Phillips #0 screwdriver, remove the black screws to release the back cover.
- ⓘ To unscrew all of the screws, you will need to close the latches again.
- ⚠ When you lift off the cover, be careful not to lift too far up. The cover contains the speaker which is connected to the motherboard.

## Step 2



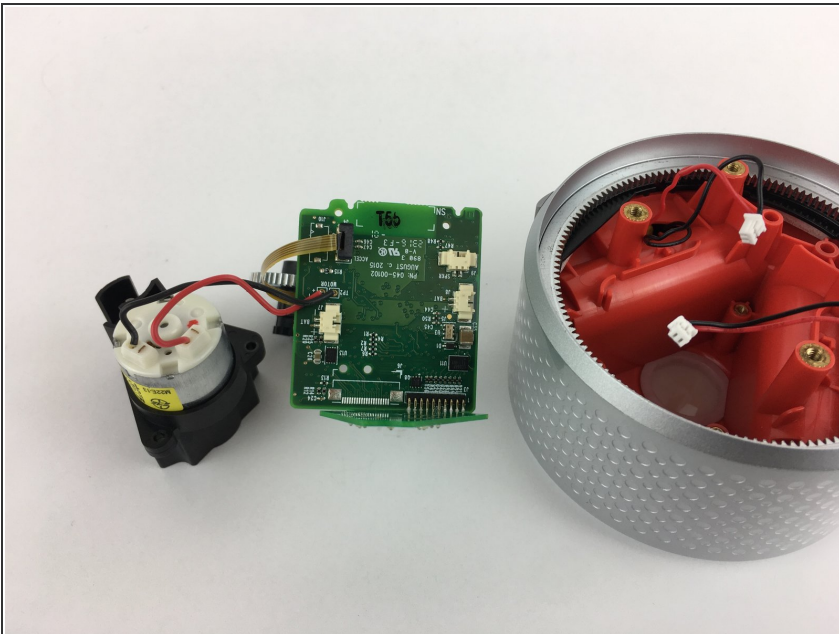
- Grab the gears and lift them up to remove from the device

### Step 3



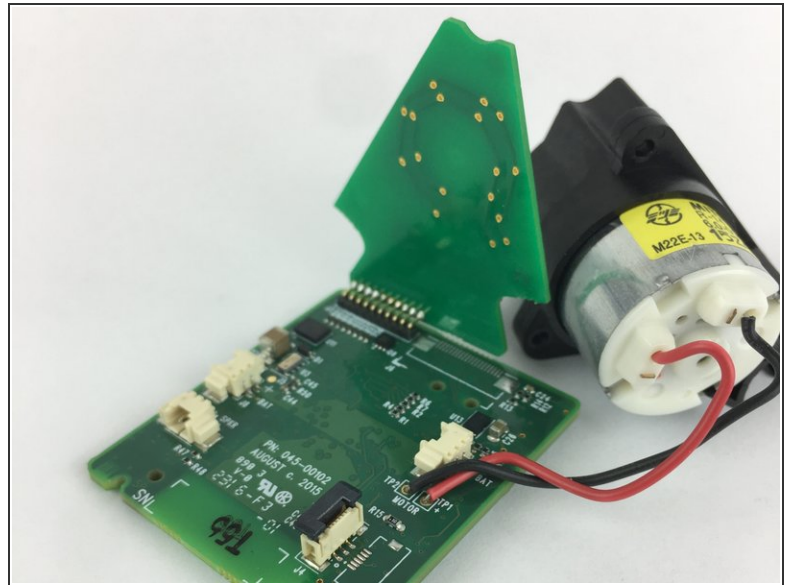
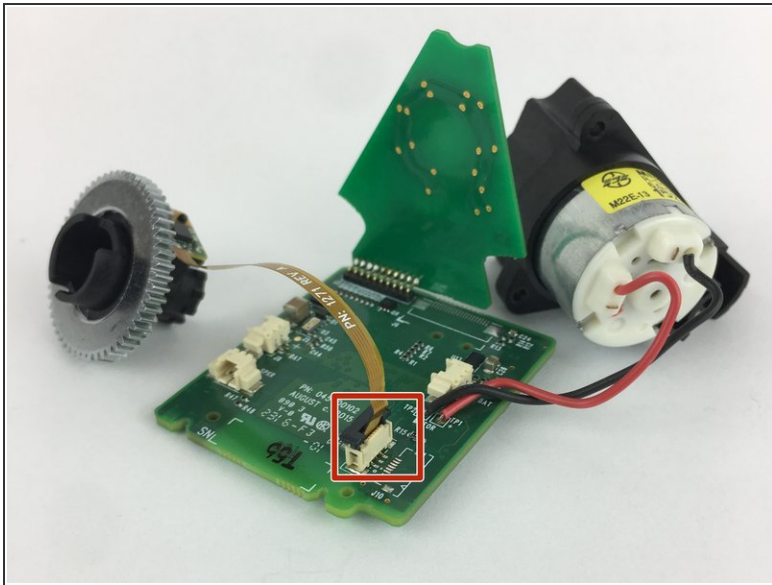
- Remove the (3) three silver screws by the motor using a Phillips #0 screwdriver.
- Disconnect the speaker plug from the motherboard
- Disconnect the battery plugs from the motherboard.

### Step 4



- Once the speaker is disconnected, remove the back cover.
- Lift up the motherboard and motor assembly out of the device.

## Step 5



- Locate the Accelerometer. It is attached to the motherboard by a ribbon.
- Lift up the black tab to remove the ribbon from the motherboard.

To reassemble your device, follow these instructions in reverse order.