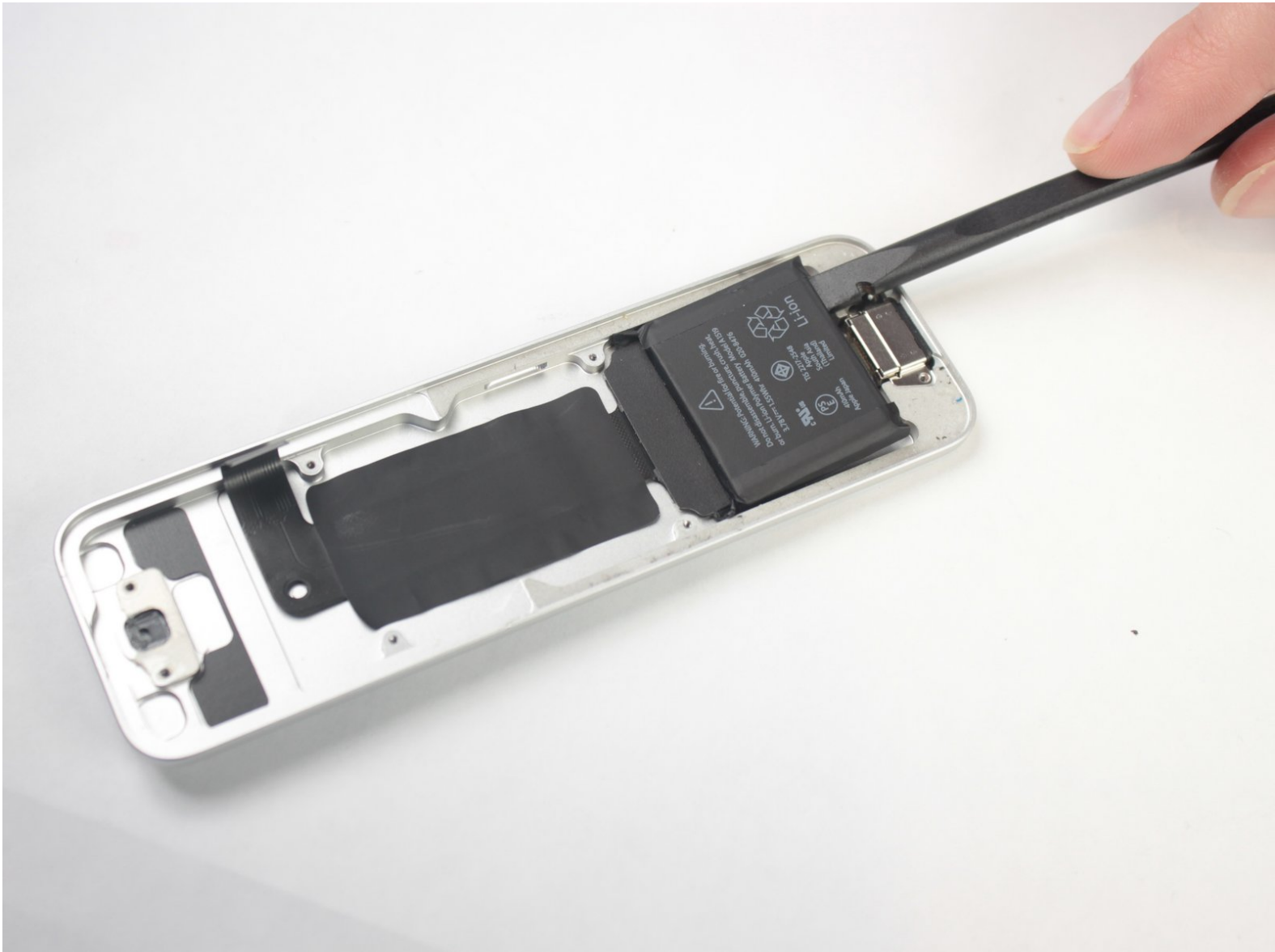




Apple TV 4K Remote Battery/Charging Port Replacement

A guide to replace the battery/charging port in an Apple TV 4K's remote.

Written By: Keenan Barber



INTRODUCTION

This guide will show you how to access the battery and charging port in your Apple TV 4K remote for replacement.

TOOLS:

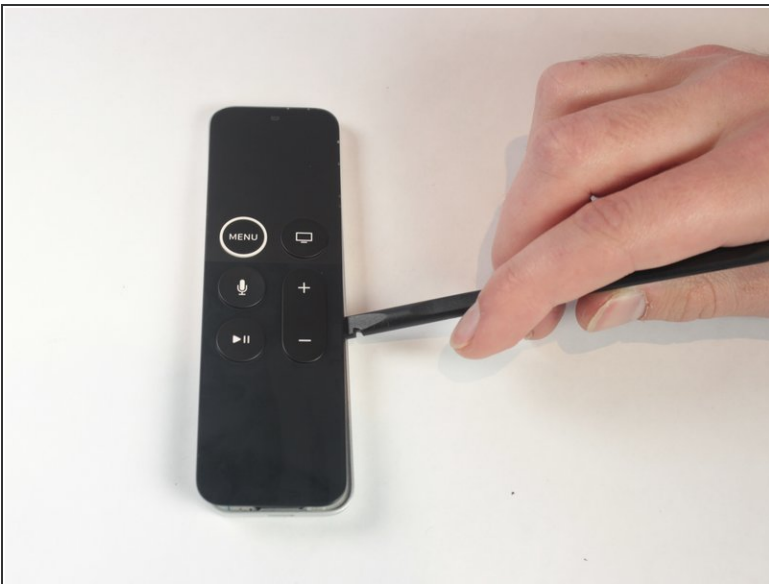
- [T3 Torx Screwdriver](#) (1)
 - [Spudger](#) (1)
 - [Tweezers](#) (1)
 - [iOpener](#) (1)
-

Step 1 — Remote Battery, Charging Port



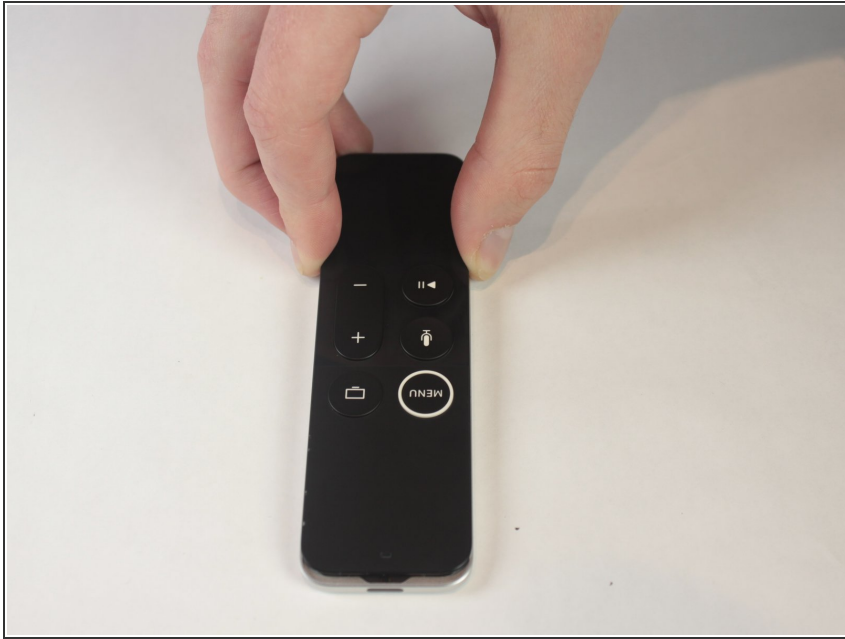
- Heat iOpener according to manufacturer's instructions.
- Place over the face of the remote to soften the adhesive under the glass.

Step 2



- Using a spudger, gently lift the face of the remote. Starting from the bottom and working your way to the top.

Step 3



- Push front face forward to disengage plastic clips at the top of the remote.

Step 4



- Unlatch the connector that binds the touch screen and logic board.

Step 5



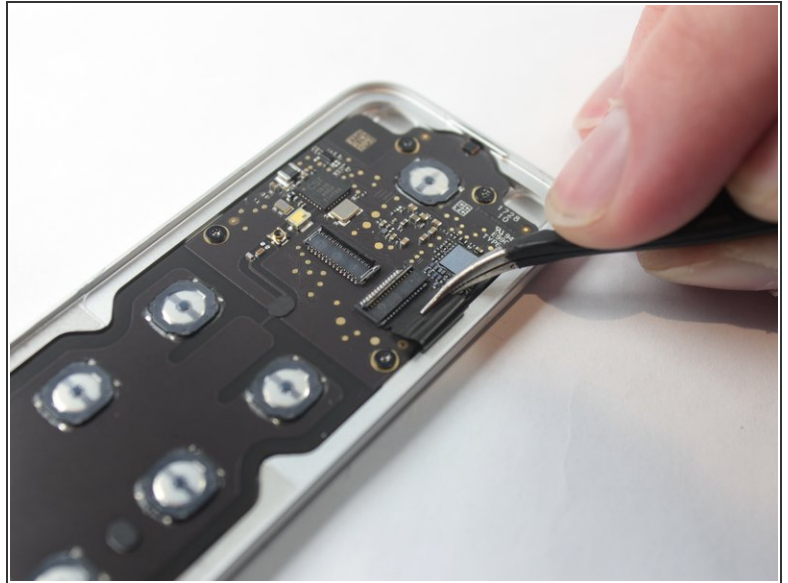
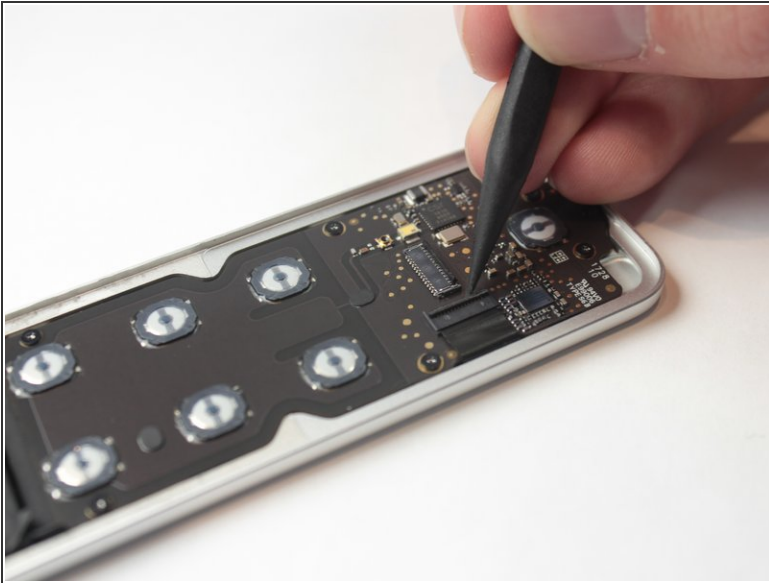
- Use tweezers to pull off the connector that binds the touch screen to the logic board.

Step 6



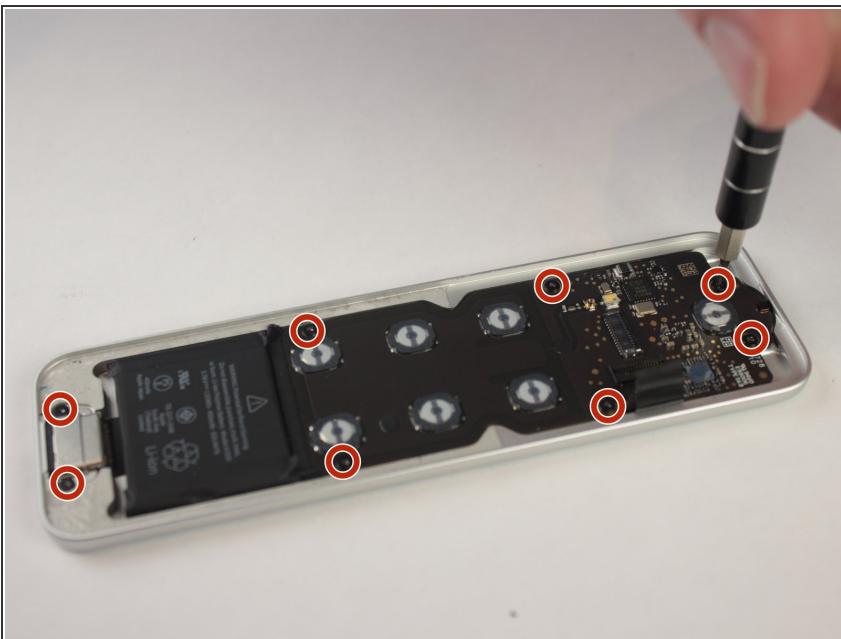
- Lift the face from the body of the remote.

Step 7



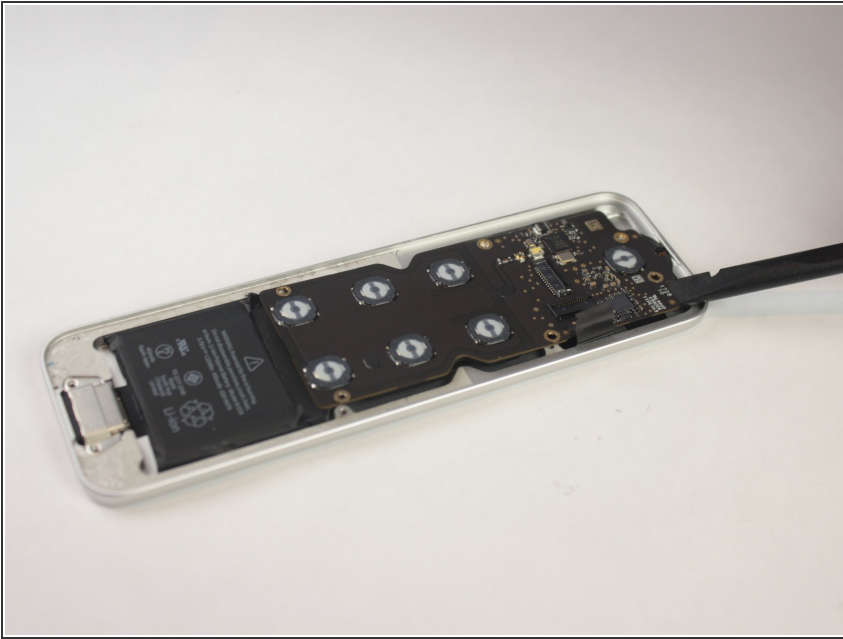
- Lift the latch holding back the connector to the battery.
- Use tweezers to disconnect the battery connector.

Step 8



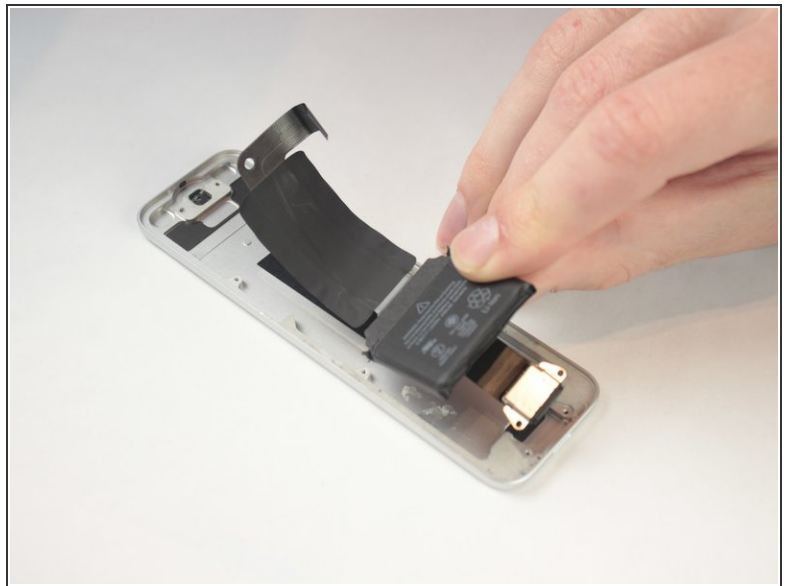
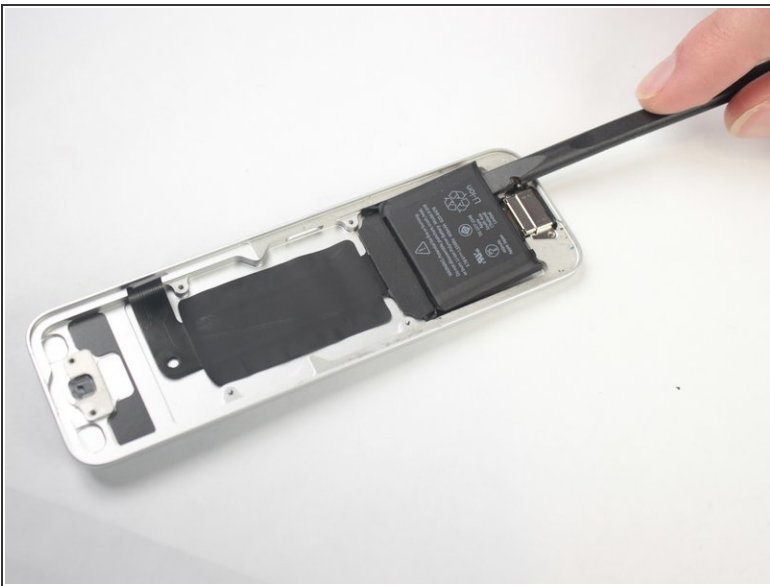
- Remove the following screws using a T3 Torx screwdriver:
 - Eight 2mm screws

Step 9



- Using a plastic spudger, gently remove the logic board from the case of the remote.

Step 10



- Gently dislodge the battery from the remote case, making sure to avoid damaging the battery itself.
- The battery should be fully removed now.

To reassemble your device, follow these instructions in reverse order.