

D-Link Quick Installation Guide

This product can be set up using any current web browser, i.e., Internet Explorer 6.x, Netscape Navigator 7.x.

DP-311P

D-Link Wireless Print Server



Before You Begin

You will need an 802.11b wirelessly enabled laptop or desktop computer and a parallel-port printer that will connect to the DP-311P.

Important: TURN OFF the power to the printer before installing the DP-311P.

Check Your Package Contents

These are the items included with your DP-311P purchase:



DP-311P Wireless Print Server



CD-ROM (containing Manual and Warranty)



5V DC 2.0A Power Adapter



Using a power supply with a different voltage rating will damage this product and void its warranty.

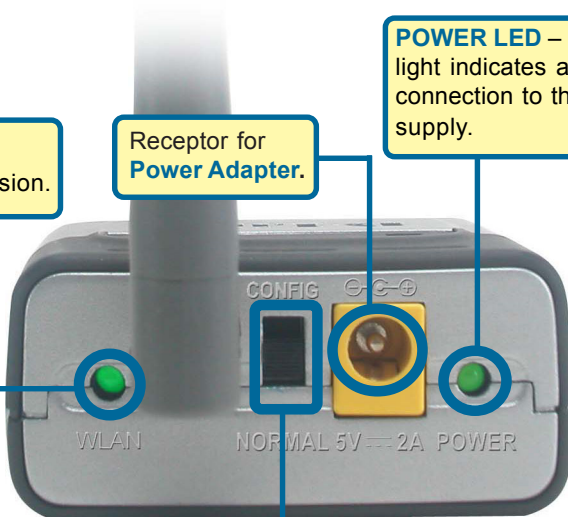
If any of the above items are missing, please contact your reseller.

Product Overview



Antenna: - Used to wirelessly connect to 802.11b compatible devices.

Parallel Port - Used to connect to the parallel port on your printer.



WLAN LED – This LED blinks during wireless data transmission.

Receptor for **Power Adapter.**

POWER LED – a solid light indicates a proper connection to the power supply.

Operation Mode Switch

This switch is used to put the DP-311P into configuration mode or normal mode.

1

Preparing your DP-311P for network printing in Windows XP

Note: Do not connect the power cord to the DP-311P until you are advised to do so.



Attach the included antenna to the rear of the DP-311P.

Make sure that the Printer is turned **OFF**.



Move switch to '**Config**' position.

Connect the DP-311P to the parallel port of the printer.

Plug one end of the power adapter into the DP-311P (in the DC Power Input port, shown in the illustration above) and the other end into your electrical outlet. The DP-311P LED's will light up to indicate that the power is connected properly.

Turn **ON** the printer.

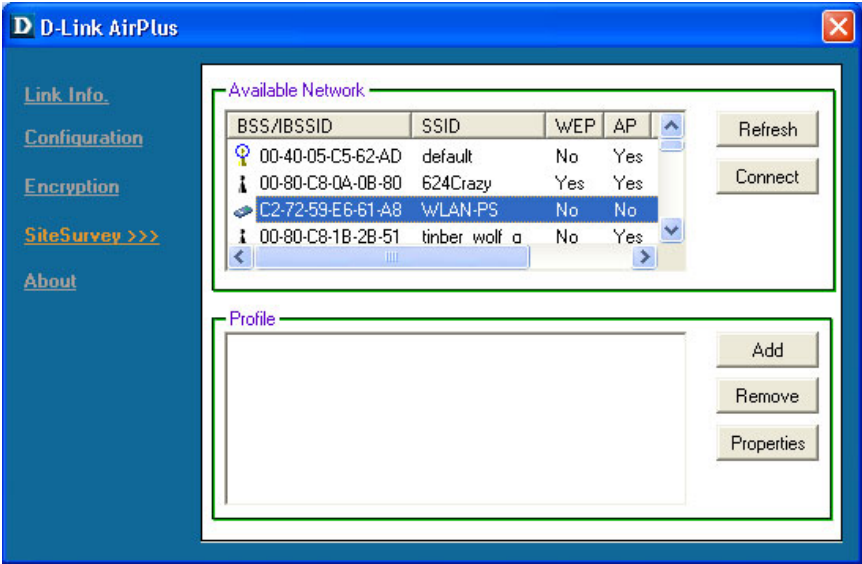
1

Preparing your DP-311P for network printing in Windows XP (cont.)

Use an 802.11b wireless client card to connect to the DP-311P wirelessly using the following settings:

SSID: WLAN-PS
Wireless Mode: Ad-Hoc
Channel: 1
WEP: Disable

For example, with D-Link's DWL-650+ AirPlus utility, you should see an Available Ad-Hoc Network by the name of **WLAN-PS**. Highlight this Network and connect to it.



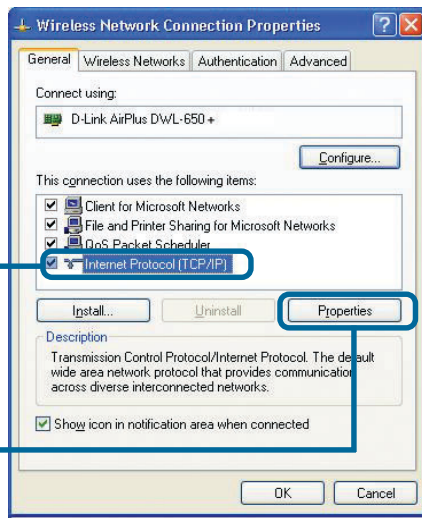
1 Preparing your DP-311P for network printing in Windows XP (cont.)

In order to configure the DP-311P, your computer must be in the same IP range as the Wireless Print Server. The following steps will walk you through setting a static IP Address in the same range as the DP-311P.

Go to **Start > right click on My Network Places > select Properties > Double-click on the Network Connection** associated with the Wireless Network Card.

Click **Internet Protocol (TCP/IP)**

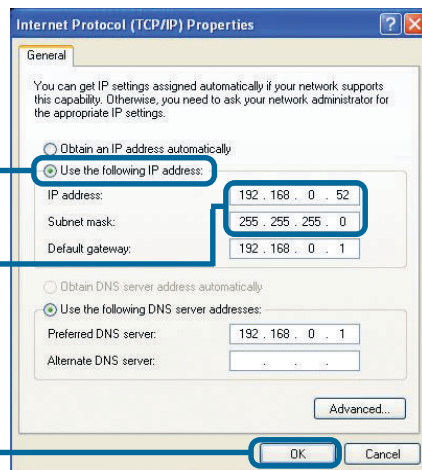
Click **Properties**



Select **Use the following IP address**

IP address: **192.168.0.52**
Subnet mask: **255.255.255.0**

Click **OK**

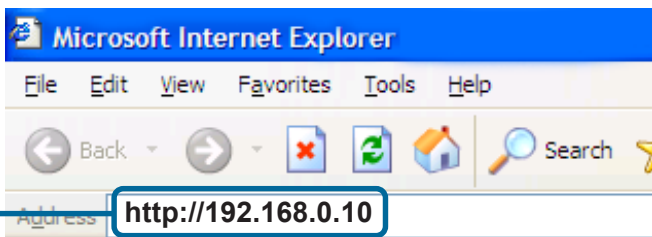


1 Preparing your DP-311P for network printing in Windows XP (cont.)

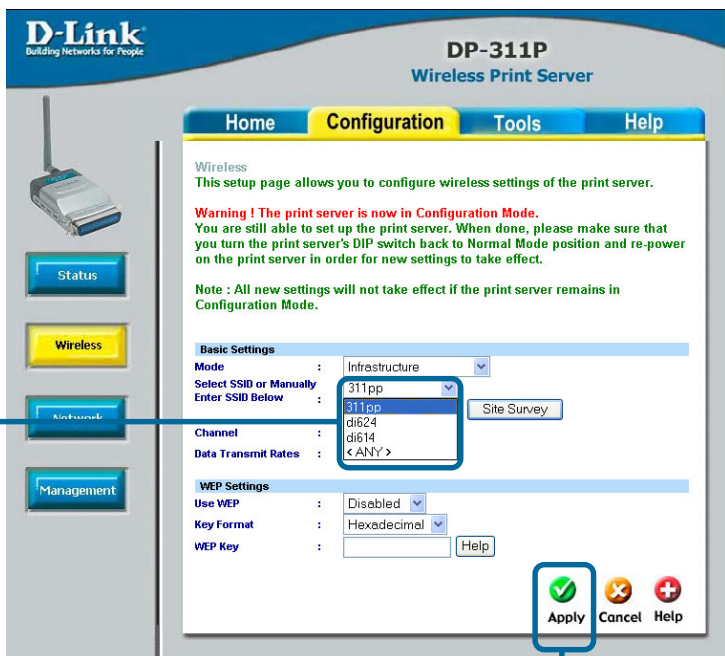
The **factory default IP address** of the DP-311P is **192.168.0.10**. In order to print to the your printer through the DP-311P, the DP-311P must have the same IP network settings as your network. By factory default, the DP-311P is configured to connect to “**ANY**” wireless access point.

Follow the steps below to associate the print server to your wireless AP or router. The SSID of your wireless AP or router should appear in the list as shown below.

Open your Web browser and type “**http://192.168.0.10**” into the URL address box. Then press the **Enter** or **Return** key.



Click on **Configuration > Wireless**.



Select **SSID**

Apply Changes

1

Preparing your DP-311P for network printing in Windows XP (cont.)

Click on **Configuration > Network**.

Configure your **IP Address** here to conform to your wireless network. It is recommended that you use a **Static IP Address**. By default, the IP Address of the DP-311P is **192.168.0.10**

D-Link
Building Networks for People

DP-311P
Wireless Print Server

Home Configuration Tools Help

Network
This setup page allows you to configure TCP/IP settings, Netware settings, and AppleTalk settings of the print server.

TCP/IP Settings

☐ Obtain TCP/IP settings automatically (use DHCP/BOOTP)

☒ Use the following TCP/IP settings

IP Address : 192.168.0.10

Subnet Mask : 255.255.255.0

Gateway's IP :

Network General Settings

Print Server Name : DEFAULT_PS_NAME

Polling Time : 3 seconds (min: 3, max: 29 seconds)

Login Password :

NetWare NDS Settings

Use NDS Mode : Disable

Name of the NDS Tree :

Name of the NDS Context :

NetWare Bindery Settings

Use Bindery Mode : Disable

Name of the File Server : File Server not found

AppleTalk Settings

AppleTalk Zone Name :

Port Name : ATALK_PS

AppleTalk Printer Configuration

Printer Type : Laser/Writer

Data Format : TBCP

Apply Cancel Help

Apply Changes

- Move the switch on the back of the DP-311P to **“Normal”** mode.
- Remove and re-insert the print servers **power plug**.
- Associate your wireless laptop or desktop computer with the same **wireless AP or router** as your print server.

2

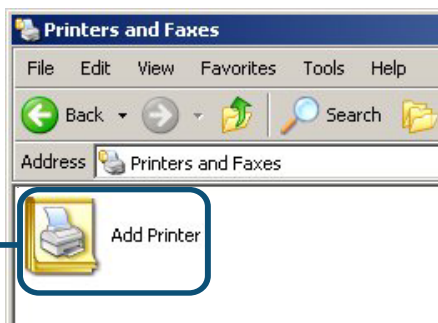
Setting up your DP-311P for network printing in Windows XP

For additional Windows operating system setup or information on the web-management interface, refer to the manual located on the CD-ROM.

For Windows XP:

Go to Start > Printers and Faxes > Add a Printer

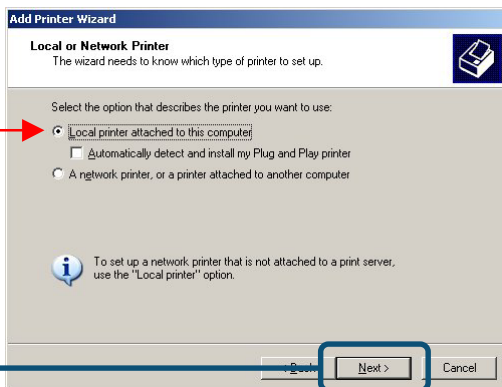
Double-click on the
“**Add Printer**” icon



2

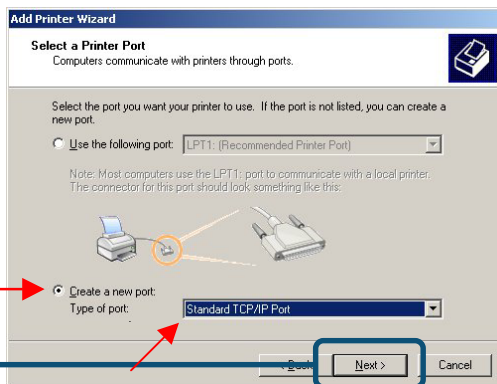
Setting up your DP-311P for network printing in Windows XP (continued)

Select **“Local Printer.”**

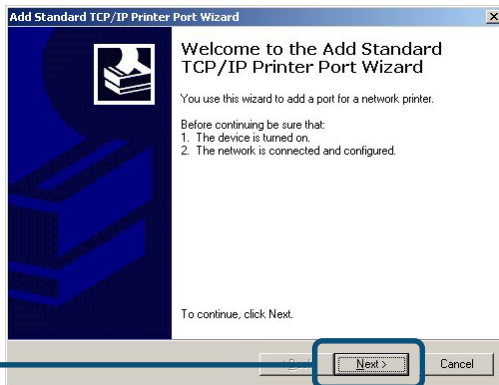


Click **Next**

Select **“Create a new port.”**
At the pull-down menu, highlight
“Standard TCP/IP Port.”



Click **Next**



Click **Next**

2

Setting up your DP-311P for network printing in Windows XP (continued)

Type in the IP address of the print server. (i.e. **192.168.0.10**)
The port name will automatically be filled in.

Click **Next**

Select “Custom.”
Then click “Settings.”

Click **Settings**

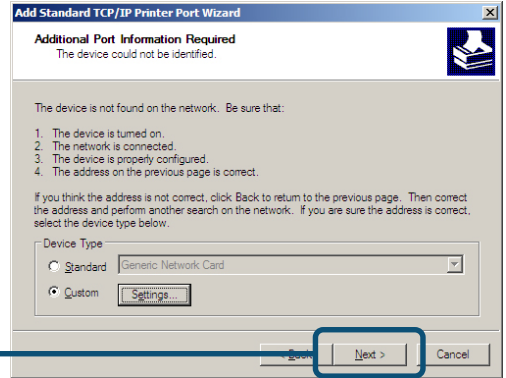
Select “**LPR**”

Enter “**lp1**” for the Queue Name.

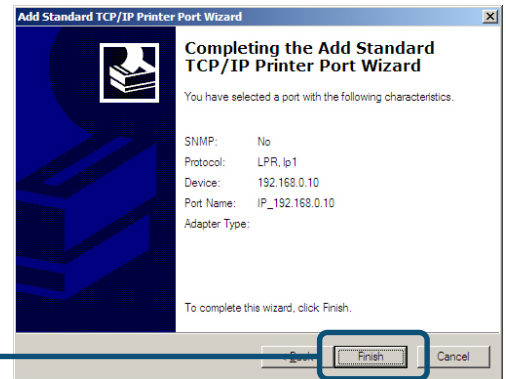
Click **OK**

2

Setting up your DP-311P for network printing in Windows XP (continued)



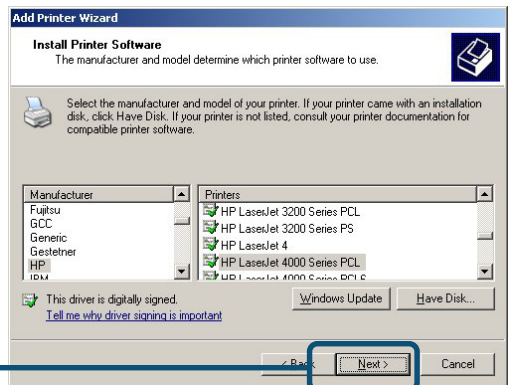
Click **Next**



Click **Finish**

In this window, scroll down to find your printer. (If it is not listed, insert the driver CD or diskette that came with your printer.)

Click on “**Have Disk.**” Then, scroll down and highlight the printer.



Click **Next**

3

Your Setup is Complete!

At this screen, you can input a name for this printer.

Click **Next**

Select “Yes” to print a test page

Click **Next**

The printer is now ready for printing with Windows XP, on your network.

Click **Finish**



Note: MacOS printing is supported for Postscript printers only.

Notes

Notes

Notes

Technical Support

You can find the most recent software and user documentation on the **D-Link** website.

D-Link provides free technical support for customers within the United States and within Canada for the duration of the warranty period on this product.

U.S. and Canadian customers can contact **D-Link** technical support through our website or by phone.

Tech Support for customers within the United States:

D-Link Technical Support over the Telephone:

(877) 453-5465

24 hours a day, seven days a week

D-Link Technical Support over the Internet:

<http://support.dlink.com>

email: support@dlink.com

Tech Support for customers within Canada:

D-Link Technical Support over the Telephone:

(800) 361-5265

Monday to Friday 8:30am to 9:00pm EST

D-Link Technical Support over the Internet:

<http://support.dlink.ca>

email: support@dlink.ca

