

1 Insert DWL-650 Driver CD

With the laptop turned **ON**, insert the driver CD for the DWL-650 Wireless PC Adapter into the CD-ROM.

The driver CD will automatically load.

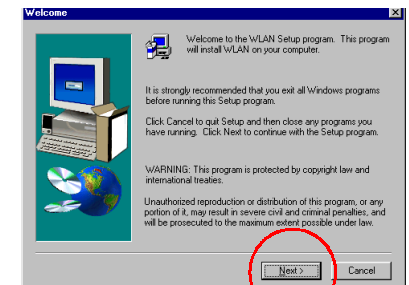
Click the **“Install Drivers”** button.



2 Installing the Drivers

The following **“Welcome”** screen will be displayed.

Click Next.

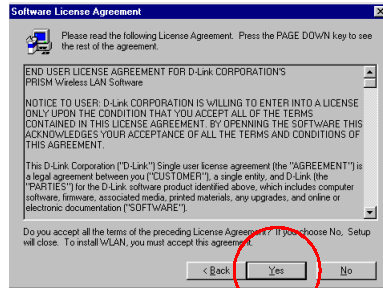


2

Installing the Drivers *continued*

Then the “**Software License Agreement**” will be displayed.

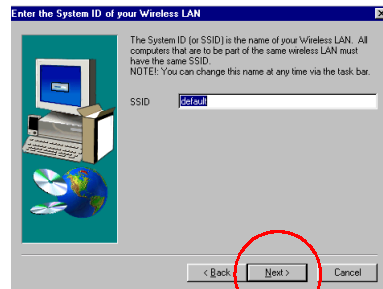
Click **Yes** to accept.



The next screen will prompt for the System ID. The word “default” will be displayed in the text box.

Type in the desired name of the System ID in the provided text box. The System ID needs to be the same for all wireless network devices.

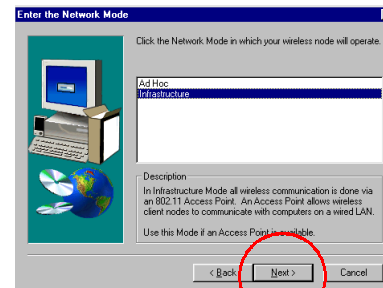
Click **Next**.



Select the **Network Mode**.

If you are connecting to an Access Point, select “**Infrastructure**”. Otherwise, if you are connecting directly to another wireless adapter without an Access Point, or Wireless Residential Gateway, then select “**Ad Hoc**”.

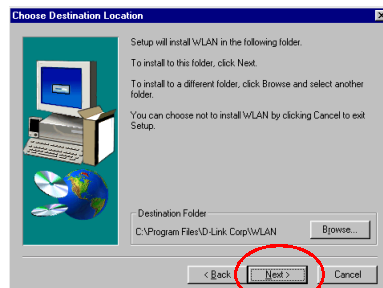
Click **Next**.



Windows will prompt for the destination folder.

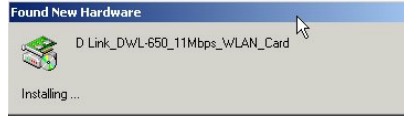
Click **Next** to accept the selected folder.

Otherwise, click **Browse** and select the desired folder.



4 Finish Installation

Windows will recognize new hardware.

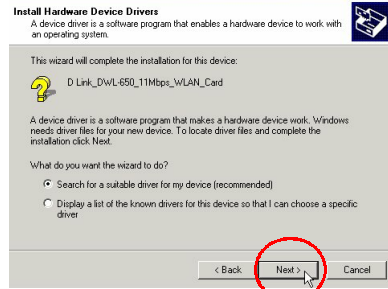


At the “Welcome” screen, **Click Next** to continue.



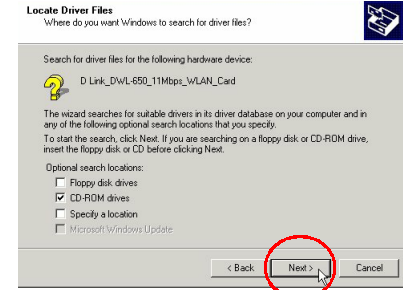
At the next screen, select “Search for a suitable driver for my device”.

Click Next to continue.



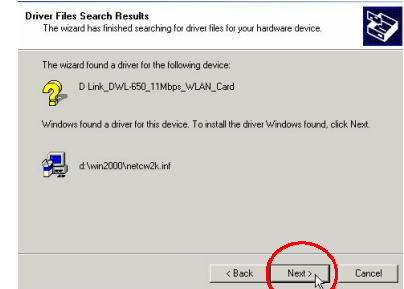
At the following window, select “CD-ROM drives”.

Click Next to continue.



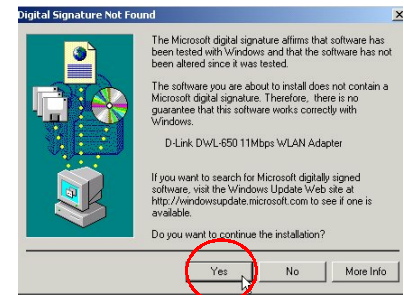
At the next window,

Click Next to continue.



The following screen will only appear at initial installation.

Click Yes to continue.



At the next window

Click Finish.
Restart the computer to complete installation.

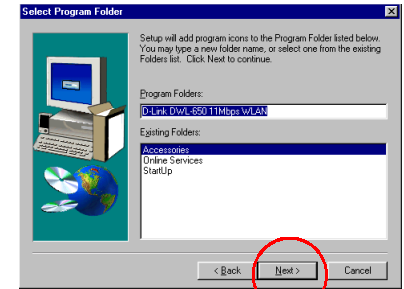
To check that the wireless adapter is working, click on the configuration utility icon in the task bar. Make sure that there is a wireless connection under the “link info tab”.



2 Installing the Drivers *continued*

The next screen will appear.

Click Next



Windows will then load the system files. After the system files are loaded, Windows will prompt to restart the computer.

Click Finish



3 Installing DWL-650 Wireless PC CARD

After the computer reboots if the following prompt appears, **Click OK** to continue.

Then insert the DWL-650 Wireless PC Adapter into an available PC slot in the laptop.

