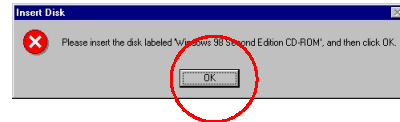


APPENDIX A Providing Windows 98 Files

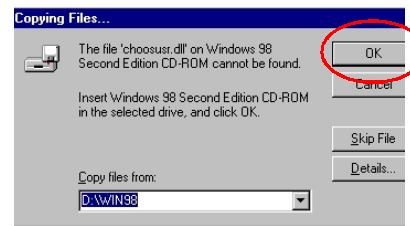
If prompted for the Windows 98 CD, insert the Windows 98 CD into the CD-ROM Drive.



Click **OK**.

Specify the correct location in the “Copy files from:” box. If the CD-ROM drive is the **D:** drive, then type **D:\Win98** in the box.

(Some computers will have the Windows 98 files available in the C:\Windows\options\cabs directory).



After typing in the location, Click **OK**.

Windows will copy the necessary system files.

APPENDIX B Providing Driver Files

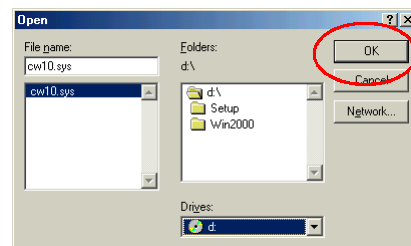
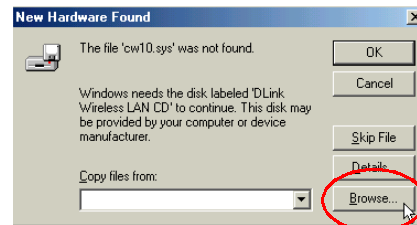
If prompted for the Driver files, insert Driver CD.

Click **Browse**.

Select the CD-ROM drive.

Click **OK**.

Windows will copy the necessary files.

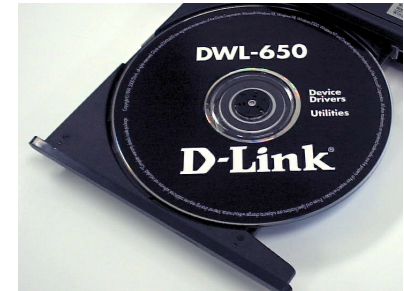


1 Insert DWL-650 Driver CD

With the laptop turned **ON**, insert the driver CD for the DWL-650 Wireless PC Adapter into the CD-ROM.

The driver CD will automatically load.

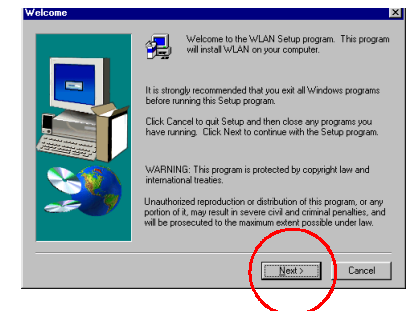
Click the “**Install Drivers**” button.



2 Installing the Drivers

The following “Welcome” screen will be displayed.

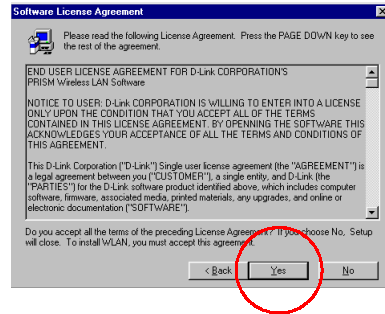
Click **Next**.



2 Installing the Drivers *continued*

Then the “**Software License Agreement**” will be displayed.

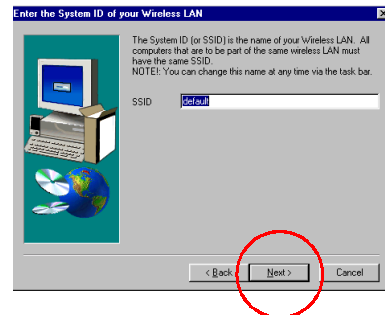
Click **Yes** to accept.



The next screen will prompt for the System ID. The word “default” will be displayed in the text box.

Type in the desired name of the System ID in the provided text box. The System ID needs to be the same for all wireless network devices.

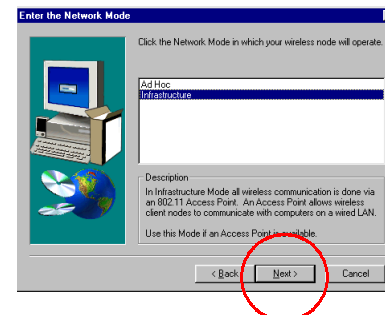
Click **Next**.



Select the **Network Mode**.

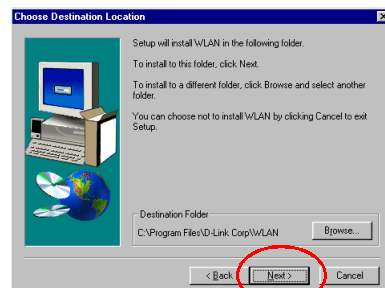
If you are connecting to an Access Point, select “**Infrastructure**”. Otherwise, if you are connecting directly to another wireless adapter without an Access Point, or Wireless Residential Gateway, then select “**Ad Hoc**”.

Click **Next**



Windows will prompt for the destination folder. Click **Next** to accept the selected folder.

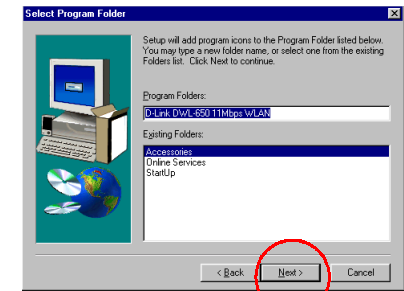
Otherwise, click **Browse** and select the desired folder.



2 Installing the Drivers *continued*

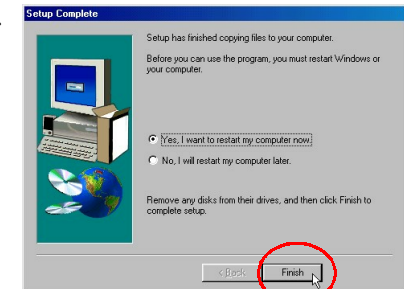
The next screen will appear.

Click **Next**.



Windows will then load the system files. After the system files are loaded, Windows will prompt to restart the computer.

Click **Finish**.



3 Installing DWL-650 Wireless PC CARD

If the following prompt appears, after the computer is restarted, Click **OK** to continue.



Then insert the DWL-650 Wireless PC Adapter into an available PC slot in the laptop.



4 Finish Installation

Windows will recognize the DWL-650 Wireless PC Adapter. If prompted, **RESTART** the computer. (Some computers will prompt for Windows 98 files and Driver files, if so, please refer to Appendices A & B.) Click **Yes** to finish the driver installation.

To check that the wireless adapter is working, click on the configuration utility icon in the task bar. Make sure that there is a wireless connection under the “link info tab”.

