



Quick Install Guide
For Windows XP, 2000, ME, 98SE

DGE-530T with SNMP Agent

Package Contents:

- D-Link DGE-530T with SNMP Agent
- Printed Quick Installation Guide
- CD with Manual and Drivers

If any of the contents are missing, please contact the reseller.

This installation guide will instruct you on how to monitor your workstation from another with the SNMP Agent feature on the DGE-530T.



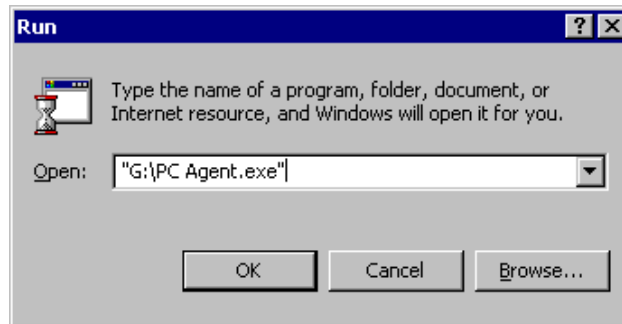
Install the DGE-530T driver

Make sure to configure the IP address, subnet mask, and default gateway.

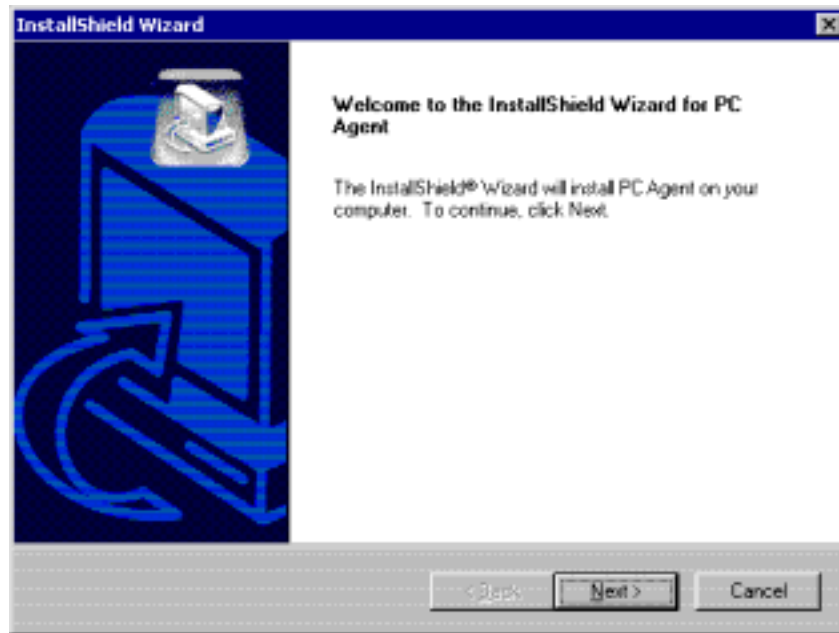


Install onto the CD drive the SNMP Agent software

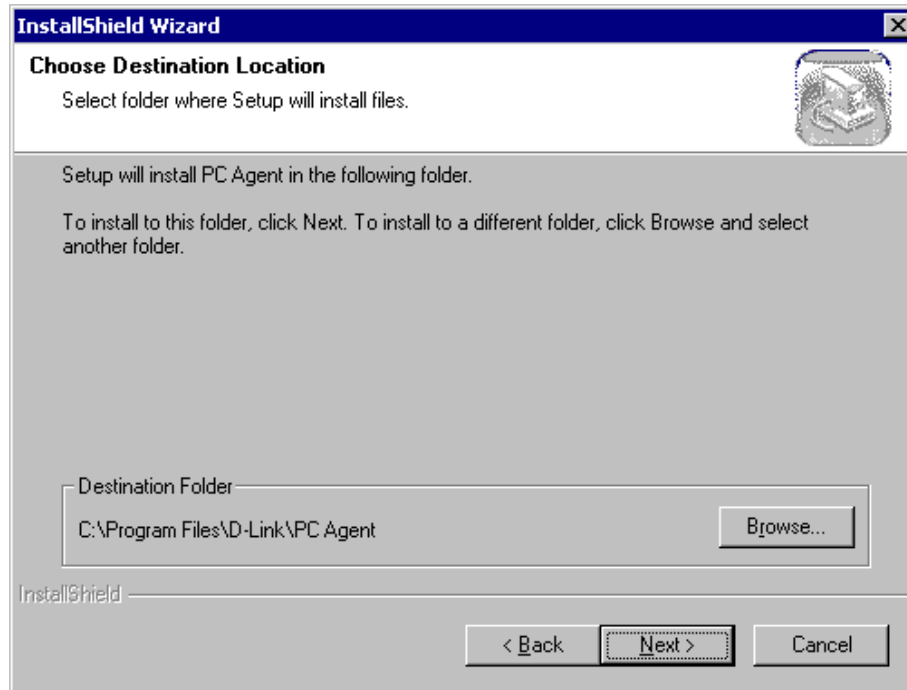
For example, type G:\PC_Agent.exe



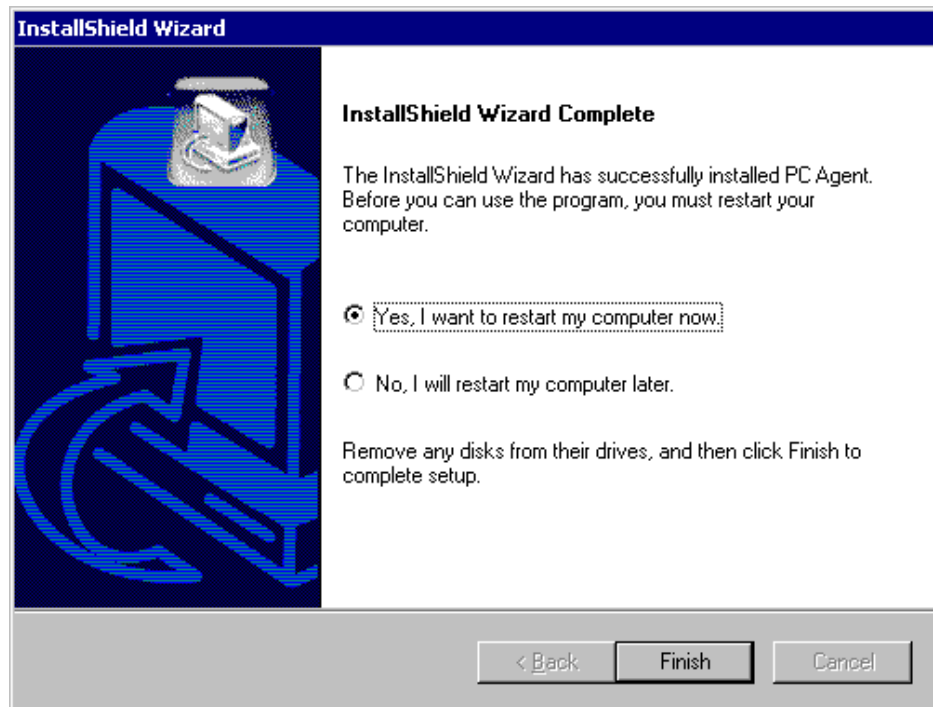
After you click **OK**, the InstallShield Wizard page will appear:



Click **Next** and the following **Choose Destination Location** page will appear: Click **Browse** to select another folder to install PC Agent. Otherwise click **Next** to select the default folder C:\Program Files\D-Link\PC Agent.



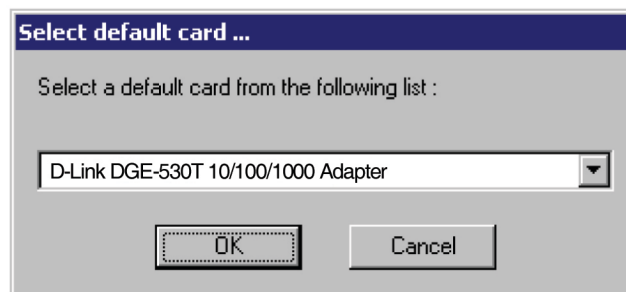
The **Install Shield Wizard** will come to completion. Click **Finish** to restart the computer.



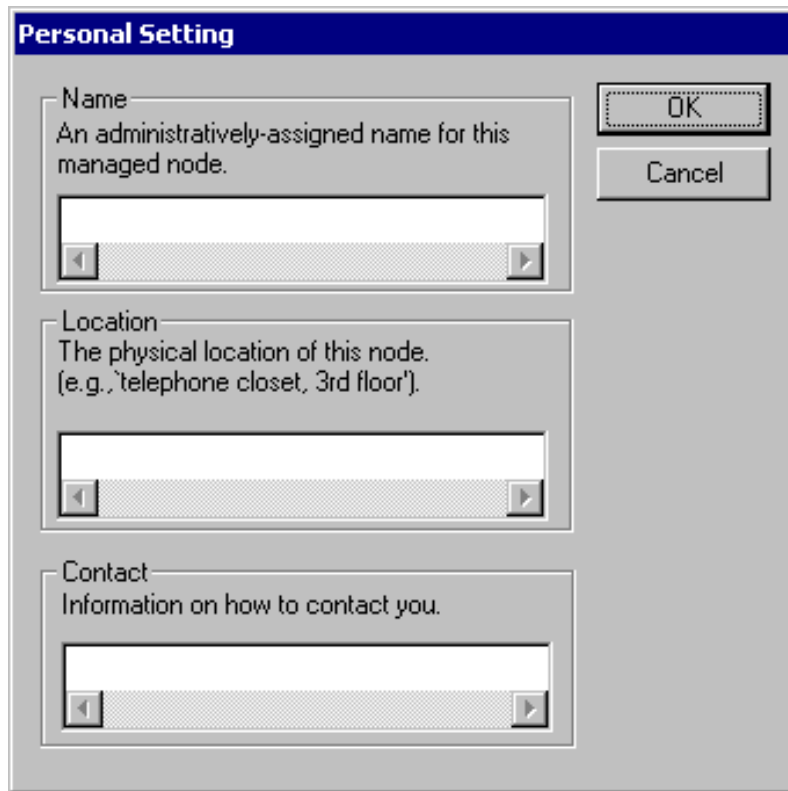
Go to **Start→Programs→D-Link PC Agent→D-Link PC Agent**



Windows will prompt you to select a default card:



You may also enter **Personal Settings** (Name, Location, Contact):



The image shows a 'Personal Setting' dialog box with a blue title bar. It contains three input fields, each with a description and a scrollable text area. The first field is for 'Name' (An administratively-assigned name for this managed node.), the second for 'Location' (The physical location of this node. (e.g., 'telephone closet, 3rd floor').), and the third for 'Contact' (Information on how to contact you.). To the right of the fields are 'OK' and 'Cancel' buttons.

Personal Setting

Name
An administratively-assigned name for this managed node.

Location
The physical location of this node.
(e.g., 'telephone closet, 3rd floor').

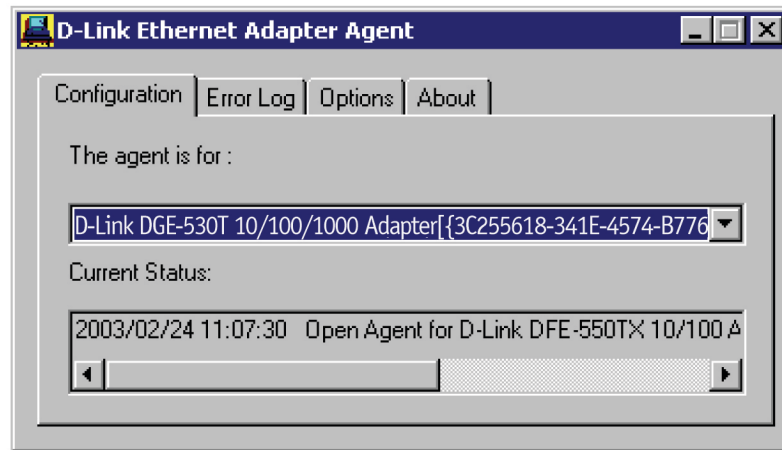
Contact
Information on how to contact you.

OK
Cancel

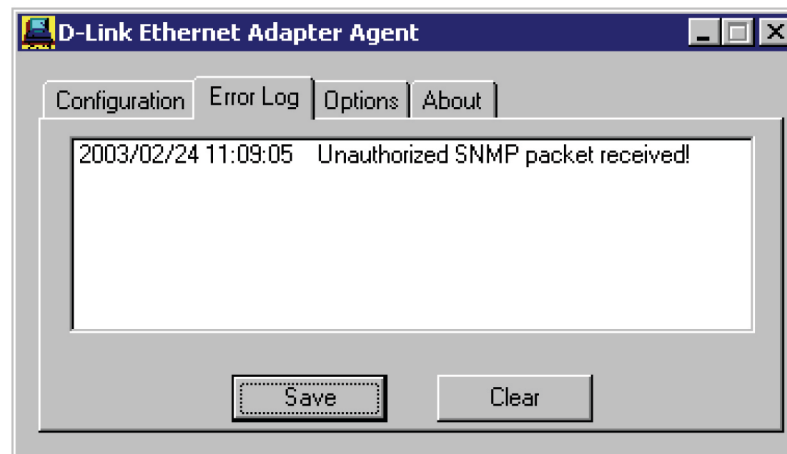
After you enter personal settings and click **OK**, the **D-Link PC Agent** becomes an icon in the taskbar.



Double-click the **D-Link PC Agent** icon to bring up the **D-Link Ethernet Adapter Agent**:



The **Configuration** tab allows you to pick which card the agent is for.

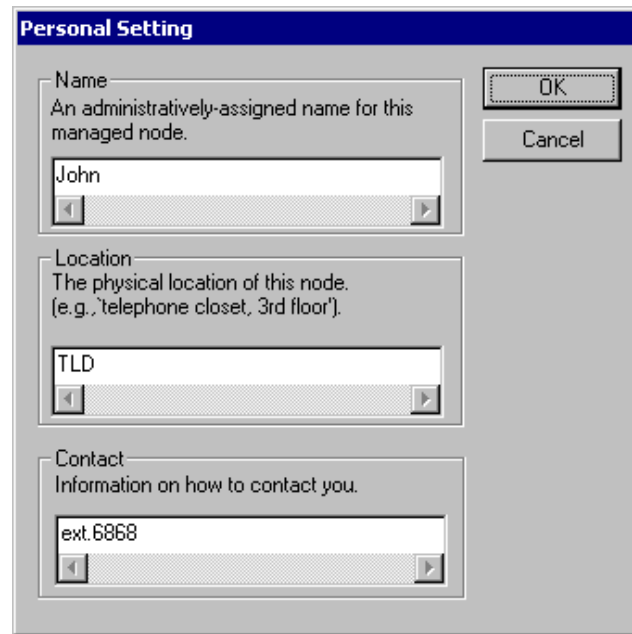


The **Error Log** tab lists error messages. You may save them by clicking **Save** or eliminate them by clicking **Clear**.



Under **Options** check “Auto launch when Windows start up” so that the D-Link Ethernet Adapter Agent will automatically appear when Windows starts up.

Click **Personal** to enter settings for name, location, and contact as in Step 3.



Personal Setting

Name
An administratively-assigned name for this managed node.

John

Location
The physical location of this node.
(e.g., 'telephone closet, 3rd floor').


TLD

Contact
Information on how to contact you.

ext.6868

OK Cancel

Click **Password** to set the password to desired from default password of “private.”



Password Setting

Enter new administratively-assigned password:

Enter new password again:

OK Cancel

5

Now you can use any MIB browser, for example the D-Link MIB compiler, to view information on the workstation with the DGE-530T card SNMP Agent feature.

The D-Link Network Adapter SNMP Agent supports the following functions of the `dlk_pc.mib`:

| Function | Description |
|-------------------------|--|
| hrSystemUptime | The amount of time since this host was last initialized. |
| hrSystemDate | The host's notion of the local date and time of day. |
| hrSystemTimeZone | The current local time zone, expressed in hours west of Greenwich. If unknown, the value -1 shall be returned. hrSystemInitialLoad Device This index of the |

| | |
|------------------------------|---|
| | hrDeviceEntry pertaining to the device that this host is configured to load its initial operating system configuration from. |
| hrSystemInitialLoadParameter | This object contains the parameter (e.g. a pathname) supplied to the load device when requesting the initial operating system configuration from that device. |
| hrSystemNumUsers | The number of distinct users currently using CPU or memory resources on this host. |
| hrSystemProcesses | The number of process contexts currently loaded or running on this system. |
| hrSystemMaxProcesses | The maximum number of process contexts this system can support. If there |

| | |
|-----------------------|---|
| | is no fixed maximum, the value should be zero. |
| hrSystemAddress | The IP address of the interface. |
| hrSystemNetMask | The IP net mask for this interface. |
| hrSystemDefaultRouter | The default gateway for this IP interface. |
| hrSystemMacAddr | The MAC address of this IP interface. For interfaces that do not have such an address (e.g., a serial line), this object should contain an octet string of zero length. |
| hrMemorySize | The amount of physical main memory contained by the host. |
| hrStorageTable | The (conceptual) table of logical storage areas on the host. |
| hrStorageIndex | A unique value for each logical storage area contained by |

| | |
|------------------------------------|--|
| | the host. |
| hrStorageDescr | A description of the type and instance of the storage described by this entry. |
| hrStorageSize | The size of the storage represented by this entry, in units of Mega bytes. |
| hrStorageUsed | The amount of the storage represented by this entry that is allocated, in units of Mega bytes. |
| hrStorageAllocationFailures | The number of requests for storage represented by this entry that could not be honored due to not enough storage. |
| hrDeviceIndex | A unique value for each devices contained by the host. The value for each device must remain constant at least from one re-initialization of the |

| | |
|----------------|--|
| | agent to the next re-initialization. |
| hrDeviceDescr | A textual description of this device, including the device's manufacturer. |
| hrDeviceStatus | The current operational state of the device described by this row of the table. A value 1 indicates that the current state of the device is unknown. 2 indicates that the device is up and running and that no unusual error conditions are known. A warning state 3, indicates that agent has been informed of an unusual error condition by the operational software (e.g., a disk device driver) but that the |

| | |
|-----------------------|--|
| | device is still 'operational'. An example would be high number of soft errors on a disk. A value of testing (4), indicates that the device is not available for use because it is in the testing state. The down (5) state is used only when the agent has been informed that the device is not available for any use. |
| hrDeviceErrors | The number of errors detected on this device. |

In addition, the D-Link Network Adapter SNMP Agent supports an RFC 1213-Mib (DLK).mib and a Transmission.mib.