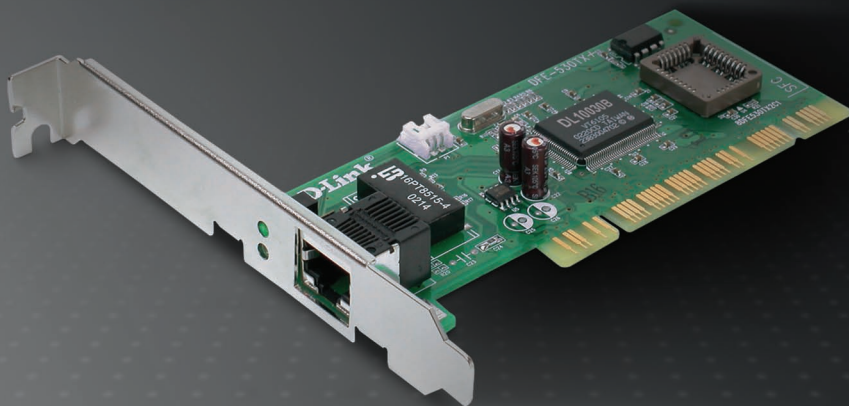


QUICK INSTALL GUIDE

DFE-530TX+

VERSION 6.1



D-Link®

WIRED

System Requirements

- A computer with an available PCI slot
- Windows® 2000, XP, Vista™, Linux 2.2.x and above, Netware 5.x/6.x, or Mac OS 10.2.x
- 300MHz processor and at least 64MB of RAM
- 32MB free hard drive space
- CD-ROM Drive

Package Contents



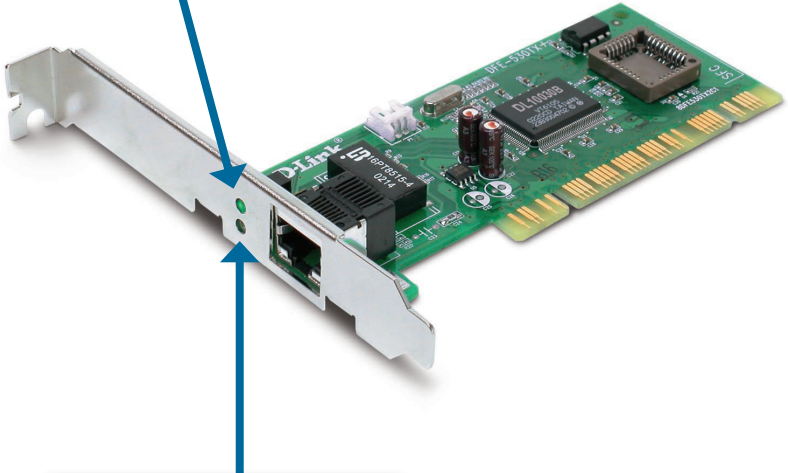
- D-Link DFE-530TX+ Ethernet Desktop Adapter
- Manual and Software on CD
- WOL Cable
- Standard and Low Profile Brackets
- Quick Install Guide

If any of the above items are missing, please contact your reseller.

Hardware Overview

Activity

A blinking light indicates data is being transmitted.



Link

A steady light indicates a connection to a network.

Installation

Warning: Do NOT install the DFE-530TX+ PCI Fast Ethernet Adapter into your computer before installing the driver software from the D-Link CD.

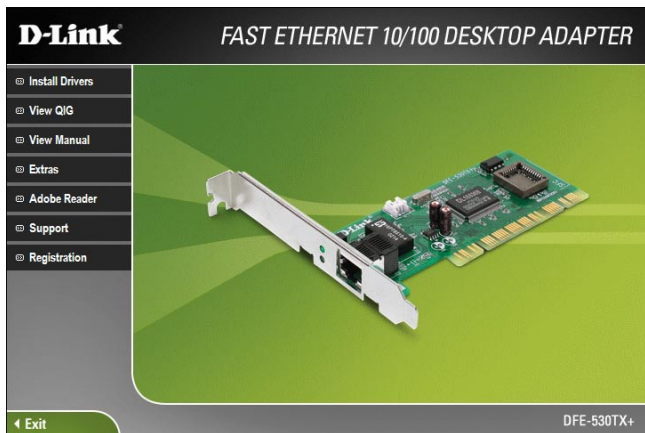
Turn on your computer and Insert the D-Link DFE-530TX+ Driver CD in the CD-ROM drive. The step-by-step instructions that follow are shown in Windows® XP. The steps and screens are similar for the other Windows operating systems.

If the CD Autorun function does not automatically start on your computer, go to **Start > Run**. In the Run command box type "**D:\DFE530TX+.exe**" (where **D:** represents the drive letter of your CD-ROM drive).

Drivers for non-Windows® operating systems are located on the D-Link CD.

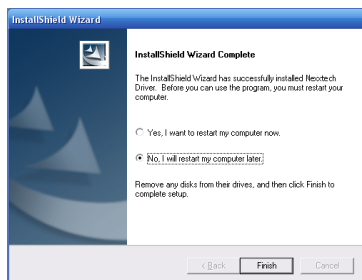
Software Installation

When the autorun screen appears, click **Install Drivers**.



When setup is complete, select **No** **I will restart my computer later** and click **Finish**.

Shut down your computer. Go to **Start > Shut Down > select Shut Down** from the drop-down menu. Click **OK**.



Once your computer is turned off, remove the power cable from the computer. Open the case and insert the D-Link adapter into an available PCI slot.

If you are familiar with Wake-On-LAN, attach the cable to your motherboard and the adapter. If you are not using the WOL feature, do not attach the cable.

Note: Write down the serial number and hardware revision (e.g. A1) before installing the adapter. If you contact technical support, you will need this information.

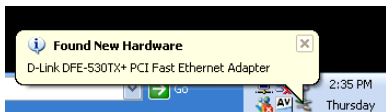
Replace the case, plug in the power cable, and power on your computer.



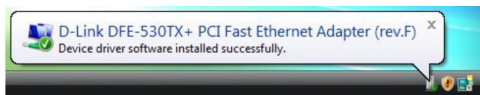
Once you boot your computer, Windows® will automatically install the drivers.

Windows 2000 users: If you receive the **Found New Hardware Wizard**, please refer to page 10 of the manual to finish your installation.

Windows XP users: You will receive a bubble stating that Windows found the DFE-530TX+ adapter.



Windows Vista™ users: You will receive a bubble stating that Windows has installed the device driver.



You may now verify your installation.

Verify Installation

To verify that the drivers are installed, you may view Device Manager. To view the device manager, please follow the steps below:

Step 1:

Windows® 2000: Click on **Start > Settings > Control Panel**

Windows XP: Click on **Start > Control Panel**

Windows Vista™: Click on **Start > Control Panel**

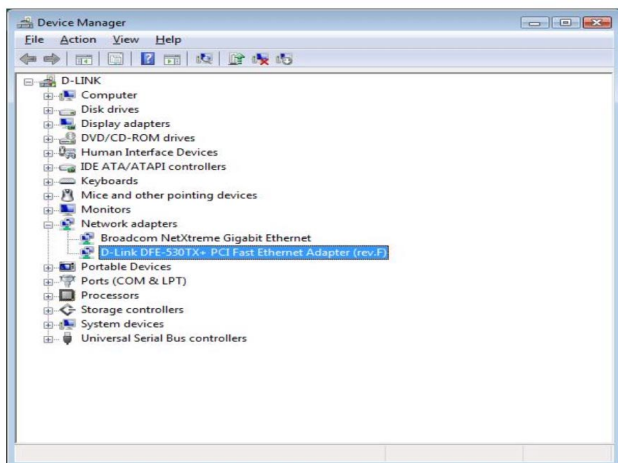
Step 2:

Windows 2000/XP: Click on the **System** icon. Click the **Hardware** tab and then click **Device Manager**.

Windows Vista: Click on the **System and Maintenance** icon and then click on **Device Manager**.

Step 3:

Scroll down and click the plus (+) sign next to **Network Adapters**. The **D-Link DFE-530TX+ PCI Fast Ethernet Adapter (rev.F)** will be listed.



Configure your Adapter

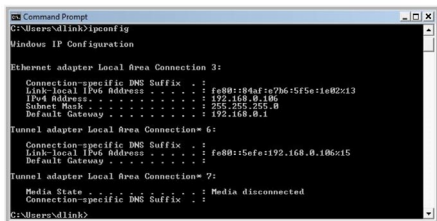
After you install your new D-Link adapter, by default, the TCP/IP settings should be set to obtain an IP address from a DHCP server (i.e. router) automatically. To verify your IP address, please follow the steps below.

Windows® 2000/XP: Click on **Start > Run**. In the run box type **cmd** and click **OK**.

Windows Vista™: Click on **Start > All Programs > Accessories > Command Prompt**.

At the prompt, type **ipconfig** and press **Enter**.

This will display the IP address, subnet mask, and the default gateway of your adapter.



```
C:\Users\dlink>ipconfig

Windows IP Configuration

Ethernet adapter Local Area Connection 3:

    Connection-specific DNS Suffix  . : 
    Link-local IPv6 Address . . . . . : fe80::84af:a7b6:5f5e:1e82::13
    IPv4 Address. . . . . : 192.168.0.106
    Subnet Mask . . . . . : 255.255.255.0
    Default Gateway . . . . . : 192.168.0.1

Tunnel adapter Local Area Connection* 6:

    Connection-specific DNS Suffix  . : 
    Link-local IPv6 Address . . . . . : fe80::5efe:192.168.0.106::15
    Default Gateway . . . . . : 

Tunnel adapter Local Area Connection* 7:

    Media State . . . . . : Media disconnected
    Connection-specific DNS Suffix  . : 

C:\Users\dlink>
```

If the address is 0.0.0.0, check your adapter installation, security settings, and the settings on your router. Some firewall software programs may block a DHCP request on newly installed adapters.

If you are connecting to a wireless network at a hotspot (e.g. hotel, coffee shop, airport), please contact an employee or administrator to verify their wireless network settings.

For more information on setting your IP address, please refer to the manual.

If you are not using a DHCP capable gateway/router, or you need to assign a static IP address, please follow the steps below.

Step 1:

Windows® 2000: Click on **Start > Settings > Control Panel > Network Connections**

Windows XP: Click on **Start > Control Panel > Network Connections**

Windows Vista™: Click on **Start > Control Panel > Network and Internet > Network and Sharing Center > Manage network connections**

Step 2:

Right-click on the **Local Area Connection**, which represents your D-Link network adapter, and select **Properties**.

Step 3:

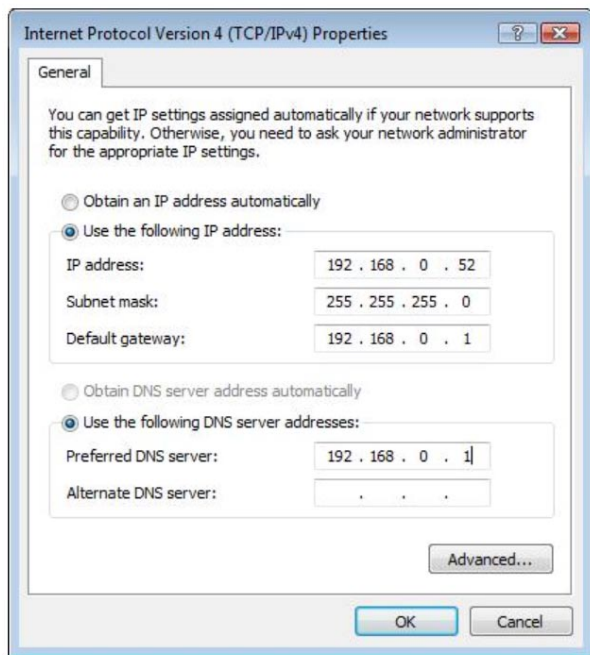
Highlight **Internet Protocol (TCP/IP)** and click **Properties**.

Step 4:

Click **Use the following IP address** and enter an IP address that is on the same subnet as your network or the LAN IP address on your router.

Example: If the router's LAN IP address is 192.168.0.1, make your IP address 192.168.0.X where X is a number between 2 and 99. Make sure that the number you choose is not in use on the network. Set Default Gateway the same as the LAN IP address of your router (192.168.0.1).

Set Primary DNS the same as the LAN IP address of your router (192.168.0.1). The Secondary DNS is not needed or you may enter a DNS server from your ISP.



Step 5:

Click **OK** twice to save your settings.

Notes

Technical Support

D-Link's website contains the latest user documentation and software updates for D-Link products.

U.S. and Canadian customers can contact D-Link Technical Support through our website or by phone.

United States

Telephone

(877) 453-5465

World Wide Web

<http://support.dlink.com>

Canada

Telephone

(800) 361-5265

World Wide Web

<http://support.dlink.com>



Version 6.1

Revised August 13, 2007

Copyright ©2005-2007 D-Link Corporation/D-Link Systems, Inc. All rights reserved. D-Link, the D-Link logo are registered trademarks of D-Link Corporation or its subsidiaries in the United States and other countries. Other trademarks are the property of their respective owners.