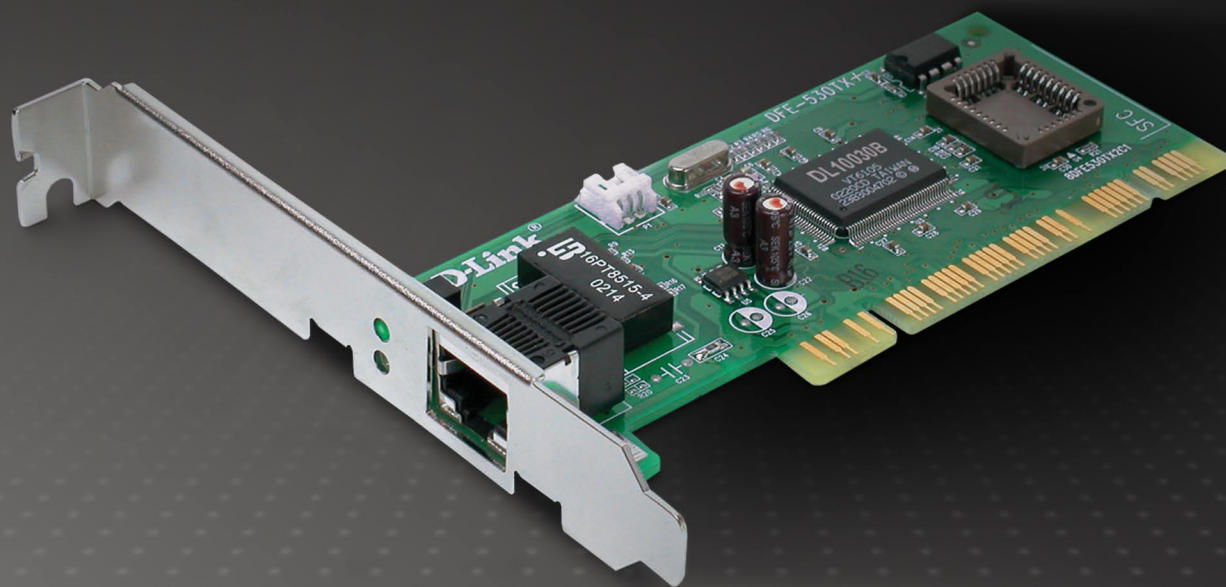


# USER MANUAL

DFE-530TX+

VERSION 6.1

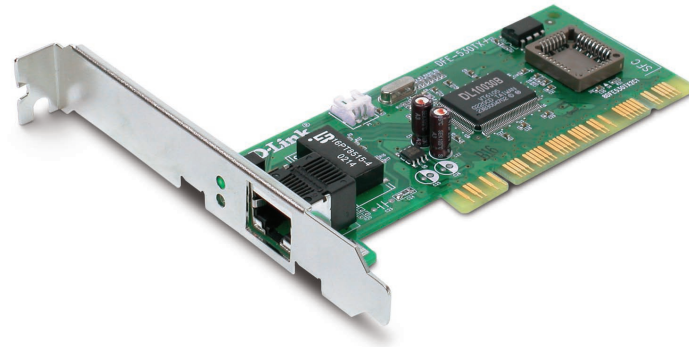


# Table of Contents

<b>Product Overview .....</b>	<b>3</b>	<b>Technical Specifications.....</b>	<b>23</b>
Package Contents.....	3	<b>Contacting Technical Support.....</b>	<b>24</b>
System Requirements .....	3	<b>Warranty .....</b>	<b>25</b>
Introduction .....	4	<b>Registration.....</b>	<b>30</b>
Features.....	5		
Hardware Overview .....	6		
LEDs .....	6		
<b>Installation.....</b>	<b>7</b>		
Software Installation .....	7		
Verify Installation.....	12		
Connecting the WOL Cable .....	13		
Flow Control.....	14		
<b>Troubleshooting.....</b>	<b>15</b>		
<b>Technology Basics .....</b>	<b>18</b>		
About Fast Ethernet.....	18		
About Auto-Negotiation.....	19		
About PCI Bus .....	20		
<b>Networking Basics .....</b>	<b>21</b>		
Check your IP address .....	21		
Statically Assign an IP address .....	22		

# Package Contents

- D-Link DFE-530TX+ PCI Network Adapter
- WOL Cable
- Standard and Low Profile Brackets
- Manual and Warranty on CD
- Quick Install Guide



# System Requirements

- A computer with an available PCI slot
- Windows® 2000/XP/Vista™, Linux 2.2.x and above, Netware 5.x/6.x, or Mac OS 10.2.x
- 300MHz processor and at least 64MB of RAM
- 32MB free hard drive space
- CD-ROM Drive

# Introduction

The D-Link DFE-530TX+ is a 10/100Mbps Fast Ethernet 32-bit PCI Adapter for desktops, workstations, and servers. The DFE-530TX+ supports a wide range of operating systems including Macintosh and Windows®.

With support for IEEE802.3 and IEEE 802.3u standards, the DFE-530TX+ supports 10BASE-T and 100BASE-TX networks. The DFE-530TX+ utilizes auto-negotiation to automatically adjust to the highest supported transfer rates up of to 200Mbps in full duplex mode.

D-Link's DFE-530TX+ also supports optional advanced networking support features like Wake-On-LAN and Boot ROM. Computers and operating systems that support the Advanced Configuration and Power Interface (ACPI) can remotely wake your PC from anywhere on the network with Wake-On-LAN. With the addition of an optional Boot ROM with PXE support, the DFE-530TX+ can support network booting of supported operating systems.

# Features

- **Wake-On-LAN Management Support** - Wake-On LAN (WOL) is an ACPI function allowing a powered down (sleeping) computer to be powered ON from a remote station. To use the WOL feature, the NIC must be WOL capable and the motherboard of the PC must be ACPI compliant. While powered-down computers Sleep, WOL enabled NICs monitor LAN traffic for valid Wake-up frames. When one is received, the NIC will immediately wake-up and send a signal to the motherboard to power ON the computer.
- PCI Local Bus Adapter 2.1/2.2 Support.
- Plug and Play Installation.
- User-friendly configuration.
- Supports 20/200Mbps in Full Duplex Mode.
- Supports 10/100Mbps in Half Duplex Mode.
- Supports PCI 2.1/2.2 ACPI Power Management Wake-On-LAN (Magic Packet, LinkChg and Microsoft wake-up frame).
- Compliant to PC 99 Standard.
- Independent 2Kb receive and transmit FIFOs.

# Hardware Overview

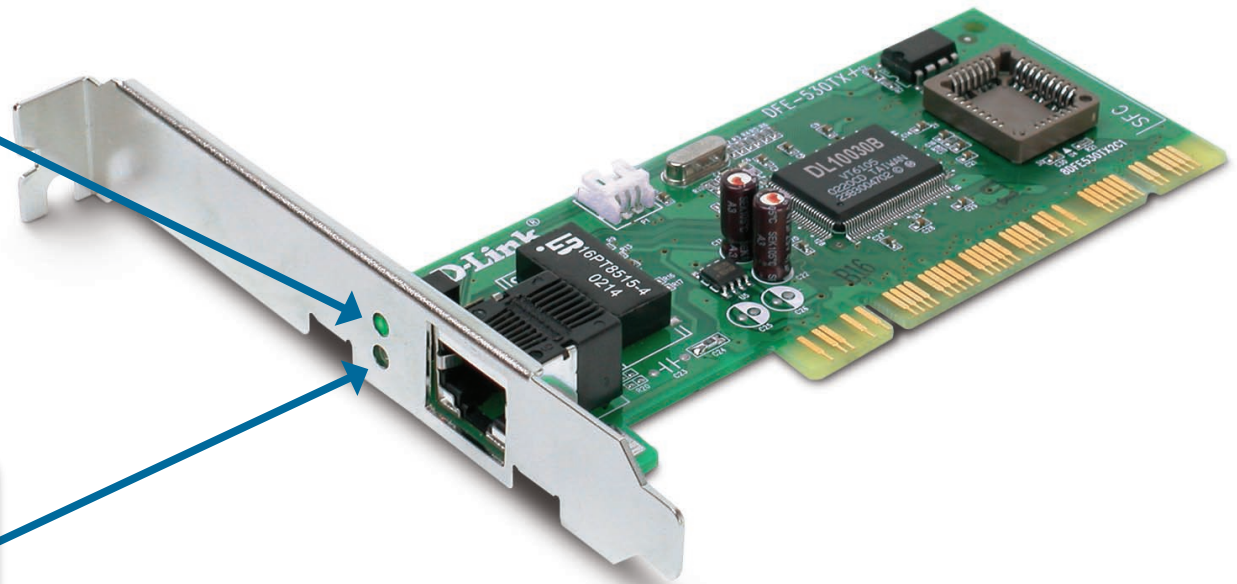
## LEDs

### Activity

A blinking light indicates data is being transmitted.

### Link

A steady light indicates a connection to a network.



# Installation

**Warning: Do NOT install the DFE-530TX+ PCI Fast Ethernet Adapter into your computer before installing the driver software from the D-Link CD.**

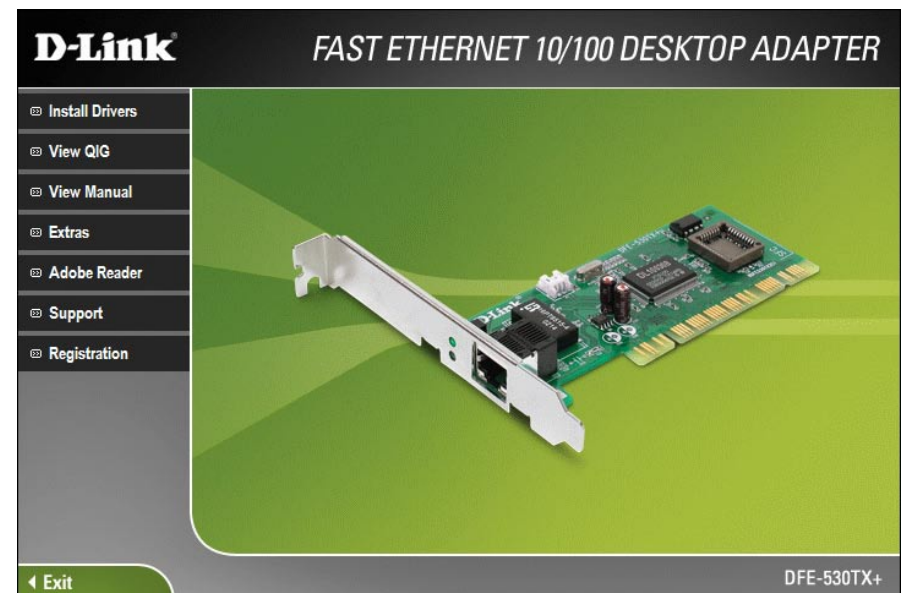
Turn on the computer and Insert the D-Link DFE-530TX+ Driver CD in the CD-ROM drive. The step-by-step instructions that follow are shown in Windows® XP. The steps and screens are similar for the other Windows operating systems.

If the CD Autorun function does not automatically start on your computer, go to **Start > Run**. In the run command box type “**D:\DFE530TX+.exe**” (where **D:** represents the drive letter of your CD-ROM drive).

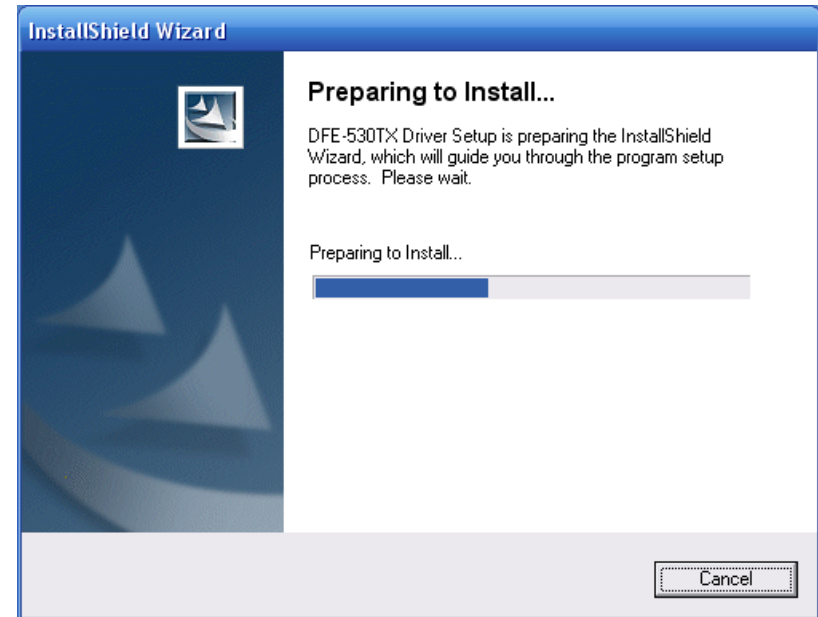
Drivers for non-Windows® operating systems are located on the D-Link CD.

## Software Installation

When the autorun screen appears, click **Install Drivers**.

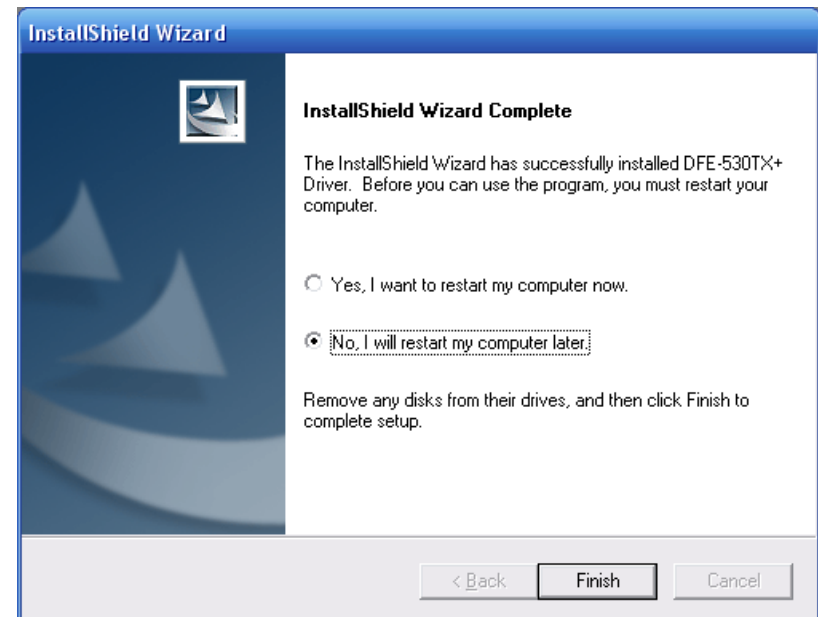


The ***InstallShield Wizard*** window will appear.



When setup is complete, select **No I will restart my computer later** and click **Finish**.

Shut down your computer. Go to **Start > Shut Down > select Shut Down** from the drop-down menu. Click **OK**.





Once your computer is turned off, remove the power cable from the computer. Open the case and insert the D-Link adapter into an available PCI slot.

If you are familiar with Wake-On-LAN, attach the cable to your motherboard and the adapter. If you are not using the WOL feature, do not attach the cable.

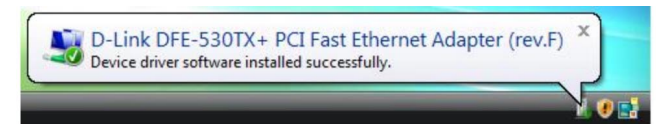
**Note:** Write down the serial number and hardware revision (e.g. A1) before installing the adapter. If you contact technical support, you will need this information.

Replace the case, plug in the power cable, and power on your computer.

Once you boot your computer, Windows® will automatically install the drivers.



**Windows Vista™ users:** You will receive a bubble stating that Windows has installed the device driver.



**Windows XP users:** You will receive a bubble stating that Windows found the DFE-530TX+ adapter.



**Windows 2000 users:** If you receive the **Found New Hardware Wizard**, please refer to the next page to finish your installation.

Skip to page 12 to verify your installation. You may now attach an Ethernet cable to the adapter and connect to your network.

If you receive a **Found New Hardware Wizard**, follow the steps below:

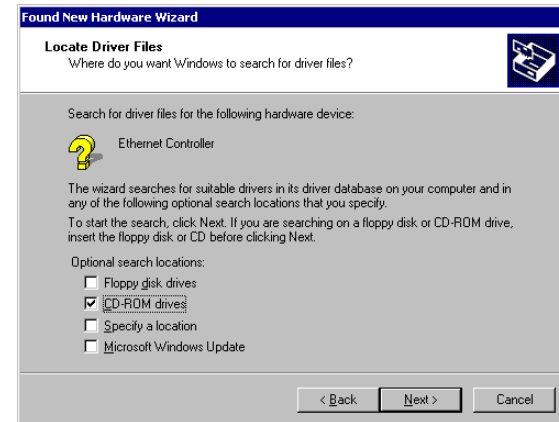
Click **Next** to continue.



Select **Search for a suitable driver for my device (recommended)** and click **Next**.



Select **CD-ROM Drives** and click **Next**. Make sure the D-Link CD is in your CD drive.



Click **Next** to continue.



Click **Finish**.



# Verify Installation

To verify that the drivers are installed, you may view Device Manager. To view the device manager, please follow the steps below:

## Step 1:

Windows® 2000: Click on **Start > Settings > Control Panel**

Windows XP: Click on **Start > Control Panel**

Windows Vista™: Click on **Start > Control Panel**

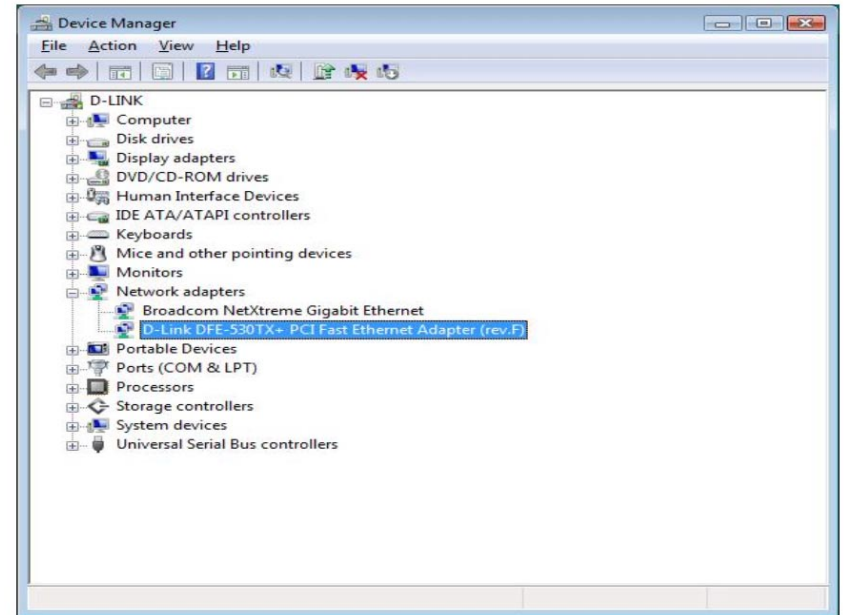
## Step 2:

Windows 2000/XP: Click on the **System** icon. Click the **Hardware** tab and then click **Device Manager**.

Windows Vista: Click on the **System and Maintenance** icon and then click on **Device Manager**.

## Step 3:

Scroll down and click the plus (+) sign next to **Network Adapters**. The D-Link DFE-530TX+ PCI Fast Ethernet Adapter (rev.F) will be listed.



# Connecting the WOL Cable

**NOTE:** If your system's motherboard WOL Connector does not fit the WOL Cable or does not have 3 pins, do not attempt to force a connection or alter the components to fit. Doing so could permanently damage your computer.

The WOL function is system dependent, in addition to the following instructions, you may need to download WOL software from INTEL or another manufacturer's website.

Please consult your computer's manual for specific BIOS settings.

The WOL Cable is an interconnect cable with standard 3-pin connectors on each end. Please follow the procedures listed below to ensure proper installation of the WOL cable.

1. Connect either end connector of the WOL Cable to the NIC WOL Connector. Both ends of the WOL Cable are identical, so either end may be used.
2. Examine the PC motherboard and/or refer to the manual for the motherboard to locate the corresponding WOL Connector on the motherboard. The actual location is system dependent, but the motherboard may have a label beside the WOL Connector. After you have located the WOL connector on the motherboard, connect the cable.
3. Power-ON the PC and press "Delete" or "F1" when prompted to enter the PCI/ISA BIOS CMOS Setup. Enable the WOL function or the power-ON function of the PC. The name of this function is system dependent, but may be located in a category heading titled something like Power Management. Refer to your computer's manual for more information regarding the CMOS Setup Utility and BIOS settings.

# Flow Control

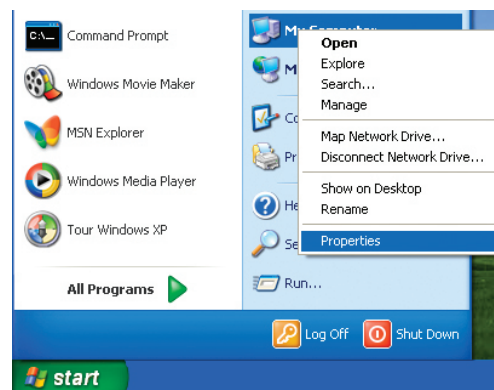
The DFE-530TX+ implements IEEE 802.3x compliant flow control for full-duplex, which provides traffic management functions for full-duplex operation. Flow control allows for enhanced full-duplex operation with switches. When operating at full-duplex (requiring a direct connection to a switch) and the switch's data buffer is about to overflow, a Pause frame will be transmitted to the DFE-530TX+. The ensuing idle time keeps the buffer from overflowing and prevents data from being lost. This enhancement can improve network throughput, avoid collisions and prevent lost data, helping the network achieve optimal performance.

# Troubleshooting

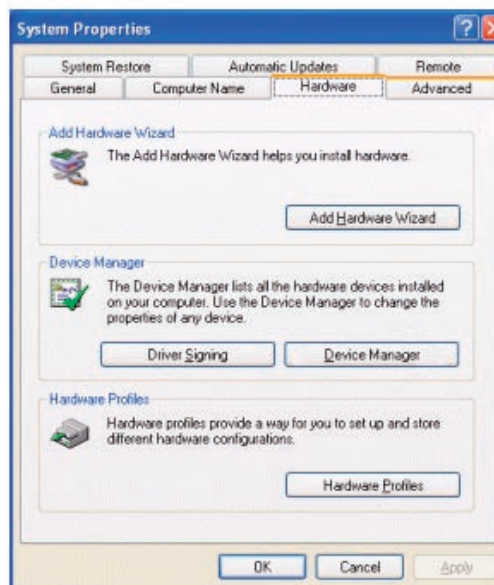
This chapter provides solutions to problems that can occur during the installation and operation of the DFE-530TX+. Read the following descriptions if you are having problems. The examples below are illustrated in Windows® XP. If you have a different operating system, the screenshots on your computer will look similar to the following examples.

## 1. How do I know if my adapter is installed properly?

Go to **Start > My Computer > Properties**.



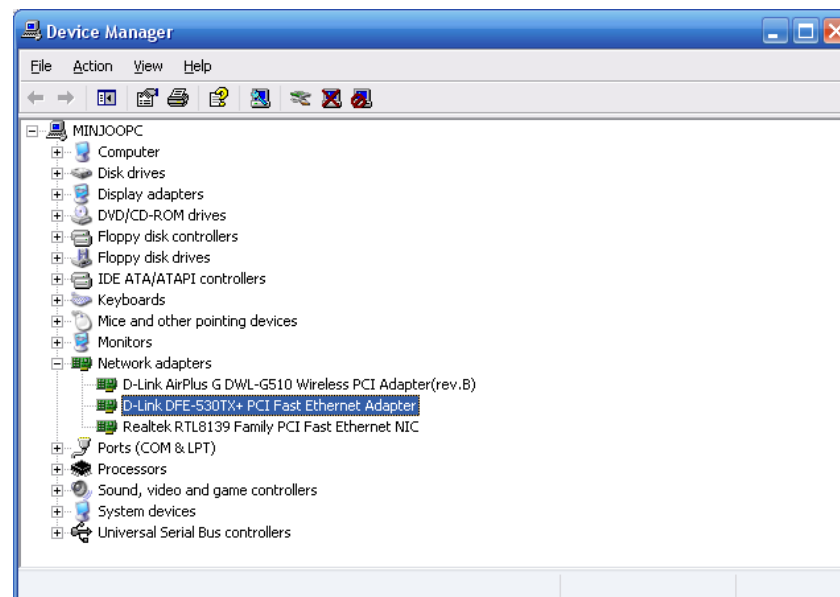
Select the **Hardware Tab**.



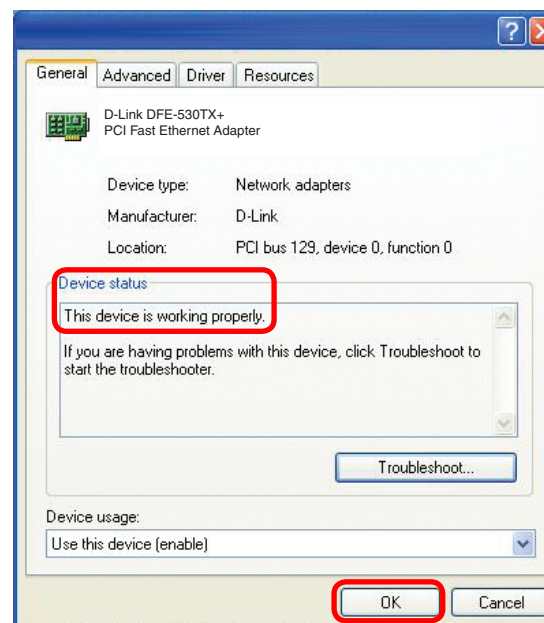
Click the + sign next to **Network Adapters**.

Right-click on **D-Link DFE-530TX+ PCI Fast Ethernet Adapter**.

Select **Properties** to check that the drivers are installed properly.



Look under **Device Status** to check that the device is working properly. Click **OK** to continue.





## **2. The computer does not recognize the DFE-530TX+ PCI Adapter.**

Make sure that the DFE-530TX+ PCI Adapter is properly seated in the computer's Cardbus slot. If Windows® does not detect the hardware upon insertion of the adapter, make sure to completely remove drivers that were previously loaded.

## **3. What is the 3 wire cable included with my Ethernet adapter?**

The cable included with your NIC is a WOL or Wake On LAN cable. Wake on LAN is an optional feature of the card and is not required for the NIC to function properly. Some new motherboards do not need the WOL cable for Wake on LAN to work. The support is built into the PCI slot, and in this case the customer will have to reference the motherboard manual or manufacturer's website for setup information.

Both ends of the three wire cable are not the same. The connector with the large key way will connect to the motherboard, and the smaller connector will connect to the NIC. To use this optional feature you will need to have additional software installed on your computer such as Magic Packet.

## **4. What is Wake On Lan (WOL)?**

Wake On LAN provides remote wake-up technology which enables systems to be remotely powered "on" for off hours tasks. A result of the Intel-IBM Advanced Manageability Alliance and part of the Wired for Management Baseline Specification, this technology helps save time on automated software installations, upgrades, disk backups and virus scans. Wake on LAN technology resides in a managed network adapter and on the system motherboard.

## **5. Why does my computer work incorrectly after I plugged in the WOL cable?**

D-Link manufactures only three network cards that can support the Wake On Lan function. Each card has its own WOL cable. Do not swap cables from one card to another card. This can cause a blank screen, and your PC will not work.

# Technology Basics

## About Fast Ethernet

Fast Ethernet is a network technology specified by IEEE Standard 802.3u. It extends the traditional 10Mbps Ethernet technology to achieve 100Mbps transmission and reception, while retaining the same CSMA/CD Ethernet protocol. Thus, while Fast Ethernet provides a tenfold increase in network capacity, it is wholly compatible with traditional 10Mbps Ethernet network facilities. This compatibility is the key to easy and efficient upgrades to 100Mbps in your network areas needing greater bandwidth. Upgrading selected areas to Fast Ethernet does not require hardware or software changes in network areas where traditional 10Mbps Ethernet is providing good service. For upgrading, Fast Ethernet is the clear choice in terms of cost-effectiveness, as well as convenience and smoothness in transition.

Category 5 cabling is required for 100Base-TX Fast Ethernet in order to provide full duplex operation. Full duplex 100Base-TX operation allows simultaneous transmission and reception, both at 100Mbps, thus providing service potentially equal to 200Mbps full-duplex service.

To provide compatibility in traditional 10Mbps Ethernet environments (where, for example, DFE-530TX+ adapters are installed anticipating upgrade of supporting switch equipment to Fast Ethernet), the DFE-530TX+ also supports traditional 10Mbps Ethernet operation, in full-duplex as well as half-duplex modes. Selection of the best operation mode in any given installation is automatically governed by auto-negotiation.

## About Auto-Negotiation

You have probably had the experience of making a dialup connection through a modem, and have heard the sound exchange between your modem and the modem at the other end of the telephone line. As unpleasant as those few seconds of noise may be, they do let you know that your modem and the remote modem are on the job, preparing for your intended communication with the remote computer.

When the two modems have tested the phone-line quality and settled on the combination of shared options and parameters which will provide the best data communication over the connecting phone line, then you are given the “connect” message which signals the end of the intermodem negotiation and the beginning of your intended communication with the remote computer.

Auto-negotiation between devices within an Ethernet Local Area Network (LAN) is similar in concept, but much briefer. The two devices involved in the auto-negotiation will be the DFE-530TX+ Adapter serving your station (installed in your computer), and the switch through which it is connected to the LAN. The options to be negotiated between the DFE-530TX+ and its supporting switch includes Ethernet type (100BASE-TX Fast Ethernet or 10BASE-T Ethernet) and duplex mode (half-duplex, being one-way-at-a-time, or full-duplex, being simultaneous transmit-and receive.)

Startup communication between the two devices occurs when both devices are powered up. Once the cable connection and the Network Operating System software is satisfied, the preparatory process of auto-negotiation between the DFE-530TX+ and its supporting switch proceeds automatically. If the switch has auto-negotiation functionality, it and the DFE-530TX+ exchange a series of messages, each device signals its capabilities and listens for corresponding information about the other. The auto-negotiation process requires only a few milliseconds, and the two devices select the best communication parameters supported by both.

If the switch does not support auto-negotiation, the (single capability) message will be recognized by the DFE-530TX+ auto-negotiation facility, which will switch to those settings of its own capabilities, which match that of the switch. Auto-negotiation reoccurs any time the linkage is restored, making the line ready again for optimal data communications.

## About PCI Bus

Your DFE-530TX+ Adapter delivers outstanding performance by fully exploiting the advance features of your computer's PCI bus. DFE-530TX+ Adapters utilize the Bus Master Mode of the PCI bus, allowing direct transfers of Ethernet packet content between computer memory and the adapter's controller, thus minimizing network demands on the CPU. The adapter's controller function provides the additional benefit of reduced command processing overhead.

The working relationship between a DFE-530TX+ adapter and main memory working in Bus Master mode is powered by the Bridge/Memory Controller of the PCI bus. This reduces the CPU role in network operations, thus freeing the CPU to service other tasks, with resulting improvement in overall computing (multitasking) performance. At the same time, it produces superior network throughput by reducing latency (waiting for CPU service) during transmissions and receptions.

# Networking Basics

## Check your IP address

After you install your new D-Link adapter, by default, the TCP/IP settings should be set to obtain an IP address from a DHCP server (i.e. router) automatically. To verify your IP address, please follow the steps below.

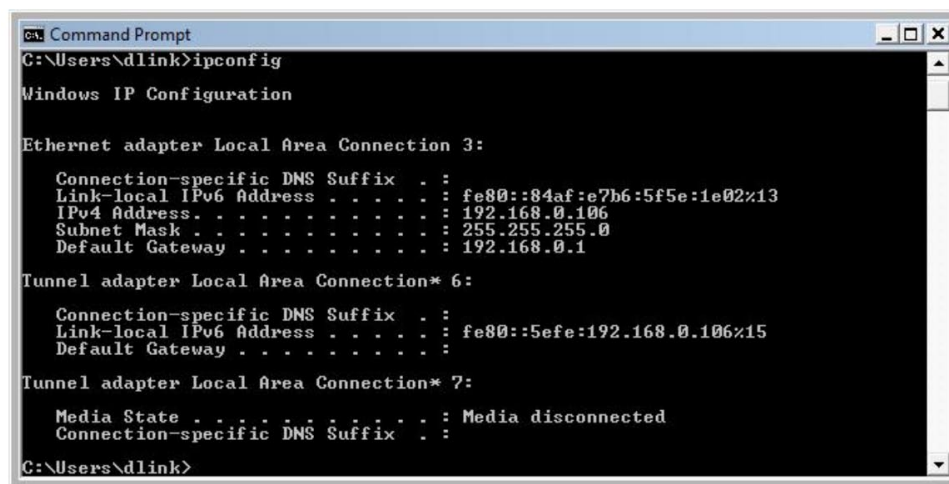
Windows® 2000/XP: Click on **Start > Run**. In the run box type **cmd** and click **OK**.

Windows Vista™: Click on **Start > All Programs > Accessories > Command Prompt**.

At the prompt, type **ipconfig** and press **Enter**.

This will display the IP address, subnet mask, and the default gateway of your adapter.

If the address is 0.0.0.0, check your adapter installation, security settings, and the settings on your router. Some firewall software programs may block a DHCP request on newly installed adapters.



```
Command Prompt
C:\Users\dlink>ipconfig

Windows IP Configuration

Ethernet adapter Local Area Connection 3:

    Connection-specific DNS Suffix  . : 
    Link-local IPv6 Address . . . . . : fe80::84af:e7b6:5f5e:1e02%13
    IPv4 Address. . . . . : 192.168.0.106
    Subnet Mask . . . . . : 255.255.255.0
    Default Gateway . . . . . : 192.168.0.1

Tunnel adapter Local Area Connection* 6:

    Connection-specific DNS Suffix  . : 
    Link-local IPv6 Address . . . . . : fe80::5efe:192.168.0.106%15
    Default Gateway . . . . . : 

Tunnel adapter Local Area Connection* 7:

    Media State . . . . . : Media disconnected
    Connection-specific DNS Suffix  . : 

C:\Users\dlink>
```

## Statically Assign an IP address

If you are not using a DHCP capable gateway/router, or you need to assign a static IP address, please follow the steps below.

### Step 1:

Windows® 2000: Click on **Start > Settings > Control Panel > Network Connections**

Windows XP: Click on **Start > Control Panel > Network Connections**

Windows Vista™: Click on **Start > Control Panel > Network and Internet > Network and Sharing Center > Manage network connections**

### Step 2:

Right-click on the **Local Area Connection**, which represents your D-Link network adapter, and select **Properties**.

### Step 3:

Highlight **Internet Protocol (TCP/IP)** and click **Properties**.

### Step 4:

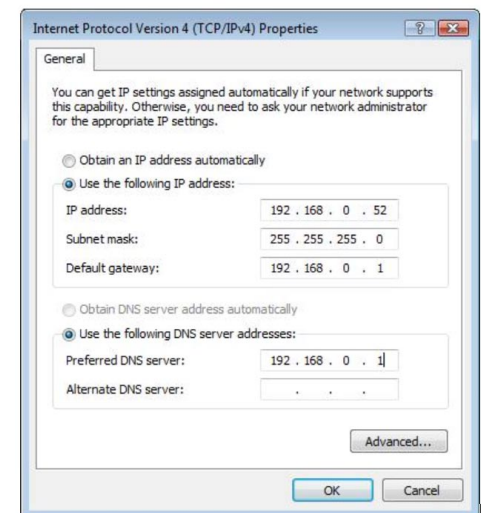
Click **Use the following IP address** and enter an IP address that is on the same subnet as your network or the LAN IP address on your router.

Example: If the router's LAN IP address is 192.168.0.1, make your IP address 192.168.0.X where X is a number between 2 and 99. Make sure that the number you choose is not in use on the network. Set Default Gateway the same as the LAN IP address of your router (192.168.0.1).

Set Primary DNS the same as the LAN IP address of your router (192.168.0.1). The Secondary DNS is not needed or you may enter a DNS server from your ISP.

### Step 5:

Click **OK** twice to save your settings.



# Technical Specifications

**Standards**

- IEEE 802.3 10Base-T Ethernet
- IEEE 802.3u 100Base-TX Fast Ethernet
- ANSI/IEEE 802.3 NWay Auto-Negotiation
- IEEE 802.3x Full Duplex Flow Control Support

**Network Media**

- Ethernet: UTP Cat3, 4, 5 EIA/TIA-568 100-ohm screened twisted-pair (STP)
- Fast Ethernet: UTP Cat5, EIA/TIA-568 100-ohm screened twisted-pair (STP)

**Diagnostic LEDs**

- Link: LED indicator lit when there is an active Ethernet link
- Activity: LED indicators blink whenever there is a reception or transmission of a frame

**Protocol**

- CSMA/CD

**Operating Temperature**

Operating: -10° to 55°C  
Storage: -10° to 70°C

**Humidity**

Operating: 10% to 90% RH NC  
Storage: 5% to 90% RH NC

**Compliances**

CE Class B, FCC Class B, VCCI-B

**Warranty**

1 Year

# Contacting Technical Support

D-Link provides free technical support for customers within the United States and within Canada for the duration of the warranty period on this product. U.S. and Canadian customers can contact D-Link technical support through our web site or by phone.

Before you contact technical support, please have the following ready:

- Model number of the product (e.g. DFE-530TX+)
- Hardware Revision (located on the label on the adapter (e.g. rev A1))
- Serial Number (s/n number located on the label on the adapter).

You can find software updates and user documentation on the D-Link website as well as frequently asked questions and answers to technical issues.

## For customers within the United States:

**Phone Support:**  
(877) 453-5465

**Internet Support:**  
<http://support.dlink.com>

## For customers within Canada:

**Phone Support:**  
(800) 361-5265

**Internet Support:**  
<http://support.dlink.com>



# Warranty

Subject to the terms and conditions set forth herein, D-Link Systems, Inc. (“D-Link”) provides this Limited Warranty:

- Only to the person or entity that originally purchased the product from D-Link or its authorized reseller or distributor, and
- Only for products purchased and delivered within the fifty states of the United States, the District of Columbia, U.S. Possessions or Protectorates, U.S. Military Installations, or addresses with an APO or FPO.

## **Limited Warranty:**

D-Link warrants that the hardware portion of the D-Link product described below (“Hardware”) will be free from material defects in workmanship and materials under normal use from the date of original retail purchase of the product, for the period set forth below (“Warranty Period”), except as otherwise stated herein.

- Hardware: one (1) year

The customer’s sole and exclusive remedy and the entire liability of D-Link and its suppliers under this Limited Warranty will be, at D-Link’s option, to repair or replace the defective Hardware during the Warranty Period at no charge to the original owner or to refund the actual purchase price paid. Any repair or replacement will be rendered by D-Link at an Authorized D-Link Service Office. The replacement hardware need not be new or have an identical make, model or part. D-Link may, at its option, replace the defective Hardware or any part thereof with any reconditioned product that D-Link reasonably determines is substantially equivalent (or superior) in all material respects to the defective Hardware. Repaired or replacement hardware will be warranted for the remainder of the original Warranty Period or ninety (90) days, whichever is longer, and is subject to the same limitations and exclusions. If a material defect is incapable of correction, or if D-Link determines that it is not practical to repair or replace the defective Hardware, the actual price paid by the original purchaser for the defective Hardware will be refunded by D-Link upon return to D-Link of the defective Hardware. All Hardware or part thereof that is replaced by D-Link, or for which the purchase price is refunded, shall become the property of D-Link upon replacement or refund.

### **Limited Software Warranty:**

D-Link warrants that the software portion of the product (“Software”) will substantially conform to D-Link’s then current functional specifications for the Software, as set forth in the applicable documentation, from the date of original retail purchase of the Software for a period of ninety (90) days (“Software Warranty Period”), provided that the Software is properly installed on approved hardware and operated as contemplated in its documentation. D-Link further warrants that, during the Software Warranty Period, the magnetic media on which D-Link delivers the Software will be free of physical defects. The customer’s sole and exclusive remedy and the entire liability of D-Link and its suppliers under this Limited Warranty will be, at D-Link’s option, to replace the non-conforming Software (or defective media) with software that substantially conforms to D-Link’s functional specifications for the Software or to refund the portion of the actual purchase price paid that is attributable to the Software. Except as otherwise agreed by DLink in writing, the replacement Software is provided only to the original licensee, and is subject to the terms and conditions of the license granted by D-Link for the Software. Replacement Software will be warranted for the remainder of the original Warranty Period and is subject to the same limitations and exclusions. If a material non-conformance is incapable of correction, or if D-Link determines in its sole discretion that it is not practical to replace the non-conforming Software, the price paid by the original licensee for the non-conforming Software will be refunded by D-Link; provided that the non-conforming Software (and all copies thereof) is first returned to D-Link. The license granted respecting any Software for which a refund is given automatically terminates.

### **Non-Applicability of Warranty:**

The Limited Warranty provided hereunder for Hardware and Software portions of D-Link’s products will not be applied to and does not cover any refurbished product and any product purchased through the inventory clearance or liquidation sale or other sales in which D-Link, the sellers, or the liquidators expressly disclaim their warranty obligation pertaining to the product and in that case, the product is being sold “As-Is” without any warranty whatsoever including, without limitation, the Limited Warranty as described herein, notwithstanding anything stated herein to the contrary.

### **Submitting A Claim:**

The customer shall return the product to the original purchase point based on its return policy. In case the return policy period has expired and the product is within warranty, the customer shall submit a claim to D-Link as outlined below:

- The customer must submit with the product as part of the claim a written description of the Hardware defect or Software nonconformance in sufficient detail to allow DLink to confirm the same, along with proof of purchase of the product (such as a copy of the dated purchase invoice for the product) if the product is not registered.
- The customer must obtain a Case ID Number from D-Link Technical Support at 1-877-453-5465, who will attempt to assist the customer in resolving any suspected defects with the product. If the product is considered defective, the customer must obtain a Return Material Authorization (“RMA”) number by completing the RMA form and entering the assigned Case ID Number at <https://rma.dlink.com/>.

- After an RMA number is issued, the defective product must be packaged securely in the original or other suitable shipping package to ensure that it will not be damaged in transit, and the RMA number must be prominently marked on the outside of the package. Do not include any manuals or accessories in the shipping package. DLink will only replace the defective portion of the product and will not ship back any accessories.
- The customer is responsible for all in-bound shipping charges to D-Link. No Cash on Delivery (“COD”) is allowed. Products sent COD will either be rejected by D-Link or become the property of D-Link. Products shall be fully insured by the customer and shipped to D-Link Systems, Inc., 17595 Mt. Herrmann, Fountain Valley, CA 92708. D-Link will not be held responsible for any packages that are lost in transit to D-Link. The repaired or replaced packages will be shipped to the customer via UPS Ground or any common carrier selected by D-Link. Return shipping charges shall be prepaid by D-Link if you use an address in the United States, otherwise we will ship the product to you freight collect. Expedited shipping is available upon request and provided shipping charges are prepaid by the customer. D-Link may reject or return any product that is not packaged and shipped in strict compliance with the foregoing requirements, or for which an RMA number is not visible from the outside of the package. The product owner agrees to pay D-Link’s reasonable handling and return shipping charges for any product that is not packaged and shipped in accordance with the foregoing requirements, or that is determined by D-Link not to be defective or non-conforming.

### **What Is Not Covered:**

The Limited Warranty provided herein by D-Link does not cover:

Products that, in D-Link’s judgment, have been subjected to abuse, accident, alteration, modification, tampering, negligence, misuse, faulty installation, lack of reasonable care, repair or service in any way that is not contemplated in the documentation for the product, or if the model or serial number has been altered, tampered with, defaced or removed; Initial installation, installation and removal of the product for repair, and shipping costs; Operational adjustments covered in the operating manual for the product, and normal maintenance; Damage that occurs in shipment, due to act of God, failures due to power surge, and cosmetic damage; Any hardware, software, firmware or other products or services provided by anyone other than D-Link; and Products that have been purchased from inventory clearance or liquidation sales or other sales in which D-Link, the sellers, or the liquidators expressly disclaim their warranty obligation pertaining to the product.

While necessary maintenance or repairs on your Product can be performed by any company, we recommend that you use only an Authorized D-Link Service Office. Improper or incorrectly performed maintenance or repair voids this Limited Warranty.

### **Disclaimer of Other Warranties:**

EXCEPT FOR THE LIMITED WARRANTY SPECIFIED HEREIN, THE PRODUCT IS PROVIDED “AS-IS” WITHOUT ANY WARRANTY OF ANY KIND WHATSOEVER INCLUDING, WITHOUT LIMITATION, ANY WARRANTY OF MERCHANTABILITY, FITNESS FOR A PARTICULAR PURPOSE AND NONINFRINGEMENT.

IF ANY IMPLIED WARRANTY CANNOT BE DISCLAIMED IN ANY TERRITORY WHERE A PRODUCT IS SOLD, THE DURATION OF SUCH IMPLIED WARRANTY SHALL BE LIMITED TO THE DURATION OF THE APPLICABLE WARRANTY PERIOD SET FORTH ABOVE. EXCEPT AS EXPRESSLY COVERED UNDER THE LIMITED WARRANTY PROVIDED HEREIN, THE ENTIRE RISK AS TO THE QUALITY, SELECTION AND PERFORMANCE OF THE PRODUCT IS WITH THE PURCHASER OF THE PRODUCT.

**Limitation of Liability:**

TO THE MAXIMUM EXTENT PERMITTED BY LAW, D-LINK IS NOT LIABLE UNDER ANY CONTRACT, NEGLIGENCE, STRICT LIABILITY OR OTHER LEGAL OR EQUITABLE THEORY FOR ANY LOSS OF USE OF THE PRODUCT, INCONVENIENCE OR DAMAGES OF ANY CHARACTER, WHETHER DIRECT, SPECIAL, INCIDENTAL OR CONSEQUENTIAL (INCLUDING, BUT NOT LIMITED TO, DAMAGES FOR LOSS OF GOODWILL, LOSS OF REVENUE OR PROFIT, WORK STOPPAGE, COMPUTER FAILURE OR MALFUNCTION, FAILURE OF OTHER EQUIPMENT OR COMPUTER PROGRAMS TO WHICH D-LINK'S PRODUCT IS CONNECTED WITH, LOSS OF INFORMATION OR DATA CONTAINED IN, STORED ON, OR INTEGRATED WITH ANY PRODUCT RETURNED TO D-LINK FOR WARRANTY SERVICE) RESULTING FROM THE USE OF THE PRODUCT, RELATING TO WARRANTY SERVICE, OR ARISING OUT OF ANY BREACH OF THIS LIMITED WARRANTY, EVEN IF D-LINK HAS BEEN ADVISED OF THE POSSIBILITY OF SUCH DAMAGES. THE SOLE REMEDY FOR A BREACH OF THE FOREGOING LIMITED WARRANTY IS REPAIR, REPLACEMENT OR REFUND OF THE DEFECTIVE OR NONCONFORMING PRODUCT. THE MAXIMUM LIABILITY OF D-LINK UNDER THIS WARRANTY IS LIMITED TO THE PURCHASE PRICE OF THE PRODUCT COVERED BY THE WARRANTY. THE FOREGOING EXPRESS WRITTEN WARRANTIES AND REMEDIES ARE EXCLUSIVE AND ARE IN LIEU OF ANY OTHER WARRANTIES OR REMEDIES, EXPRESS, IMPLIED OR STATUTORY.

**Governing Law:**

This Limited Warranty shall be governed by the laws of the State of California. Some states do not allow exclusion or limitation of incidental or consequential damages, or limitations on how long an implied warranty lasts, so the foregoing limitations and exclusions may not apply. This Limited Warranty provides specific legal rights and you may also have other rights which vary from state to state.

**Trademarks:**

D-Link is a registered trademark of D-Link Systems, Inc. Other trademarks or registered trademarks are the property of their respective owners.

**Copyright Statement:**

No part of this publication or documentation accompanying this product may be reproduced in any form or by any means or used to make any derivative such as translation, transformation, or adaptation without permission from D-Link Corporation/D-Link Systems, Inc., as stipulated by the United States Copyright Act of 1976 and any amendments thereto. Contents are subject to change without prior notice.

Copyright 2005-2007 by D-Link Corporation/D-Link Systems, Inc. All rights reserved.

**CE Mark Warning:**

This is a Class B product. In a domestic environment, this product may cause radio interference, in which case the user may be required to take adequate measures.

**FCC Statement:**

This equipment has been tested and found to comply with the limits for a Class B digital device, pursuant to part 15 of the FCC Rules. These limits are designed to provide reasonable protection against harmful interference in a residential installation. This equipment generates, uses, and can radiate radio frequency energy and, if not installed and used in accordance with the instructions, may cause harmful interference to radio communication. However, there is no guarantee that interference will not occur in a particular installation. If this equipment does cause harmful interference to radio or television reception, which can be determined by turning the equipment off and on, the user is encouraged to try to correct the interference by one or more of the following measures:

- Reorient or relocate the receiving antenna.
- Increase the separation between the equipment and receiver.
- Connect the equipment into an outlet on a circuit different from that to which the receiver is connected.
- Consult the dealer or an experienced radio/TV technician for help.

For detailed warranty information applicable to products purchased outside the United States, please contact the corresponding local D-Link office.

# Registration



Product registration is entirely voluntary and failure to complete or return this form will not diminish your warranty rights.

Version 6.1  
August 14, 2007