



# Install Guide

Version 1.0

DUB-CR200

## USB 2.0 Hub with Card Reader

# System Requirements

Minimum System Requirements:

- Available USB Port
- CD-ROM Drive
- Windows® XP/2000/Me or Mac® OS 9 and X

## Package Contents



**DUB-CR200**  
**USB 2.0 Hub with Card Reader**



**CD-ROM**  
**with Manual**



**USB 2.0 Cable**



**Power Adapter**

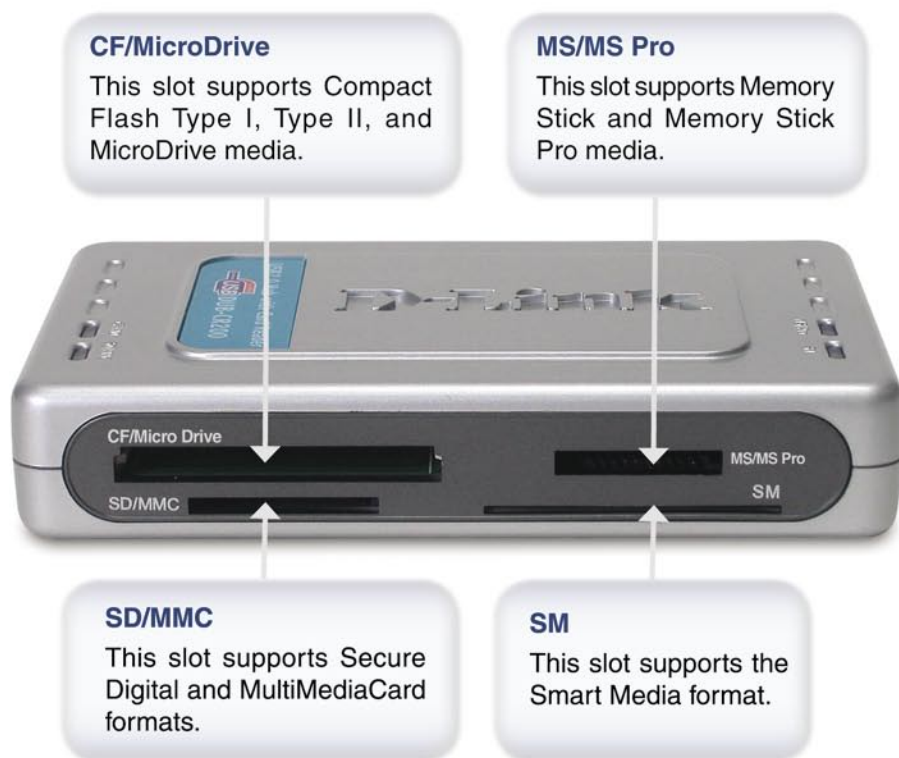


Using a power supply with a different voltage rating will damage this product and void the warranty.

*If any of the above items are missing, please contact your reseller.*

# Hardware Overview

## Front Panel



## Rear Panel

### USB LEDs

These LED's light to indicate a device is plugged into the port.

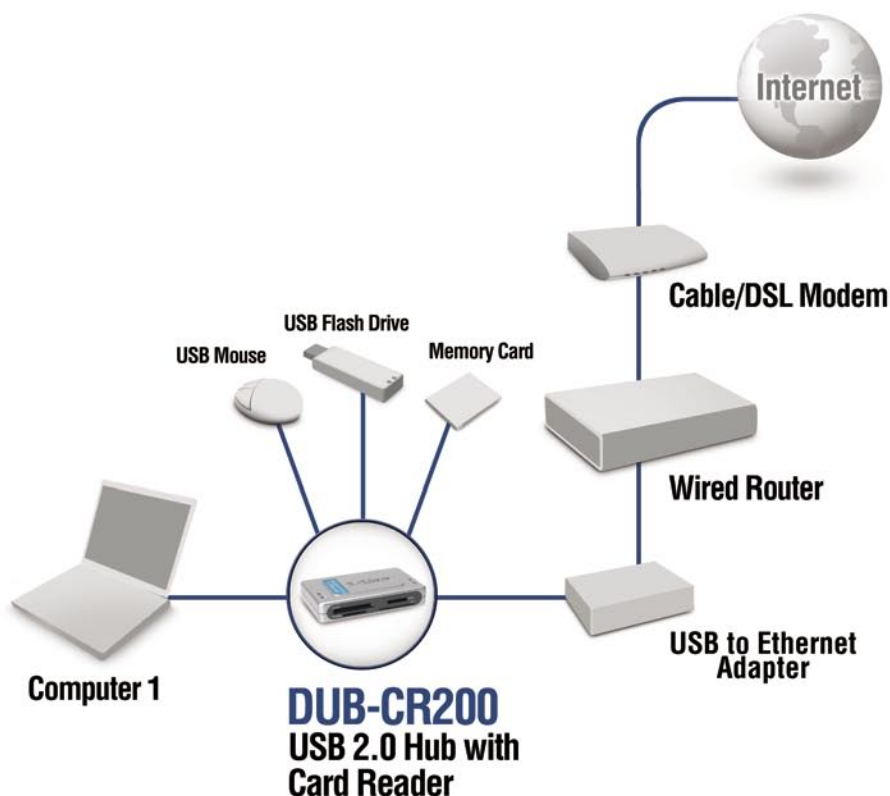


### USB 2.0 Ports

Use these ports to connect USB 2.0 devices. USB 1.1 devices may also be connected but will be limited to USB 1.1 speed.

# Installation Overview

Once you've completed your DUB-CR200 installation, your network should appear similar to the diagram below.



# Installing the Hardware

1



Plug the AC adapter into the receptor located on the side panel of the DUB-CR200.

2



Plug the other end of the AC adapter into a power strip or wall outlet.

**3**

Plug the USB Type B connector (the smaller connector) into the USB port located on the side panel of the DUB-CR200.

**4**

Plug the USB Type A connector into an available USB port on your computer.

**Hardware installation is complete!**

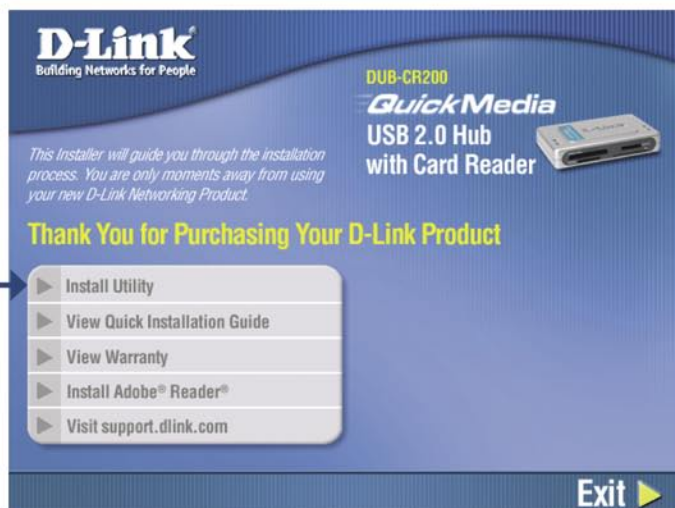


# Installing D-Link® Utility Software

**MAC USERS:** Please see **Using the DUB-CR200 on a Mac** on page 11.

**WINDOWS USERS:** The DUB-CR200 will function without the Utility Software. The Utility software installs icons that will help you access your media easier. This software is **OPTIONAL** and not required to use your DUB-CR200.

1



Click Install Utility

Turn on your computer and insert the **D-Link® DUB-CR200 CD-ROM** into the CD-ROM drive.

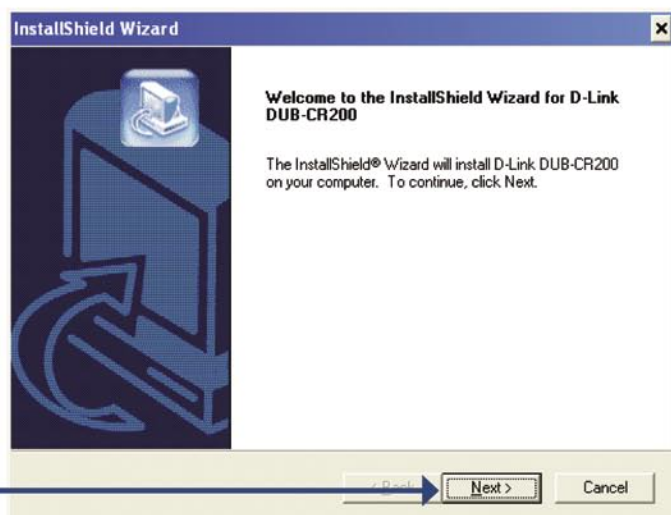
2



Click OK



3



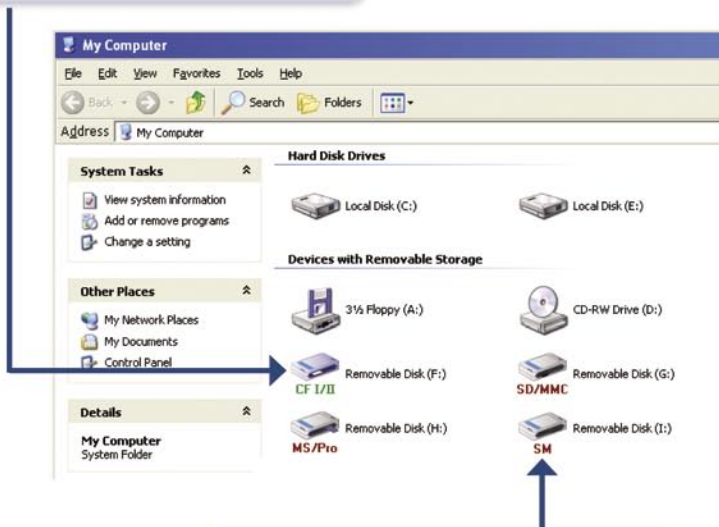
4



# Accessing the Media in Windows®

Your media is accessible via the **My Computer** window. All four ports will appear with a drive letter assignment just as your hard drive(s), CD-ROM drive, and floppy disk drives appear. If you've installed the D-Link® Utility software, the icons will display the media types accessible from each of the DUB-CR200 drives.

The icon changes color and the text becomes green when a drive is accessible.



When the drive does not contain media the icon will look like this.

To access the drives, simply double-click on the appropriate drive. Copying files to and from the drive is a simple drag and drop operation.

**Important!** Before removing media from the DUB-CR200, be sure to right click on the appropriate drive letter and select Eject. Failure to do so may result in a loss of data.

**CF I/II**

Used to read/write to CompactFlash Type I, Type II, and MicroDrive formats.

**MS/Pro**

Used to read/write to MemoryStick and Memory Stick Pro formats.

**SD/MMC**

Used to read/write to Secure Digital and MultiMediaCard formats.

**SM**

Used to read/write to Smart Media format.

## Using the DUB-CR200 on a Mac

To use the DUB-CR200 on the Mac, simply plug the DUB-CR200 to an available USB port. No software installation is required. A volume will appear on your desktop. To access the data, simply double-click on the appropriate volume. Copying files to and from a volume is a simple drag and drop operation. To eject the volume, drag the volume to the Trash can on your dock.

**Important!** Before removing media from the DUB-CR200, be sure to drag the volume to the Trash can. Failure to do so may result in a loss of data.



# Technical Support

D-Link's website contains the latest user documentation and software updates for D-Link products.

D-Link provides free technical support for customers within the United States and Canada for the duration of the product's warranty period.

U.S. and Canadian customers can contact D-Link Technical Support through our website or by phone.

## United States

### Telephone

(877) 453-5465

Twenty four hours a day, seven days a week.

### World Wide Web

<http://support.dlink.com>

### E-mail

[support@dlink.com](mailto:support@dlink.com)

## Canada

### Telephone

(800) 361-5265

Monday through Friday, 7:30am to 12:00am EST.

### World Wide Web

<http://support.dlink.ca>

### E-mail

[support@dlink.ca](mailto:support@dlink.ca)



Version 1.0

Revised 11/05/04