

# D-Link Quick Installation Guide

This product can be configured using Internet Explorer 5.x or above;  
Netscape 6.2.x or above;  
Apple Safari; Linux Nautilus.



**DSM-602H**  
**DSM-604H**  
Digital Media Storage

## Before You Begin

You must have at least the following for configuration:

1. A DHCP server assigning IP addresses during the initial setup process.
2. A computer with Windows XP, 2000, ME, 98se, Apple MAC OSX, or Linux based operating system with an installed Ethernet adapter.
3. Activating UPnP in Windows XP and ME is optional, but is highly recommended for ease of use.

## Check Your Package Contents



**DSM-602H 20GB Digital Media Storage  
or  
DSM-604H 40GB Digital Media Storage**



**CD-ROM (Containing Manual and Warranty)**



**Ethernet (CAT5 UTP/Straight-Through) Cable**



**Stacking and Vertical Stands**



**5V DC Power Adapter**

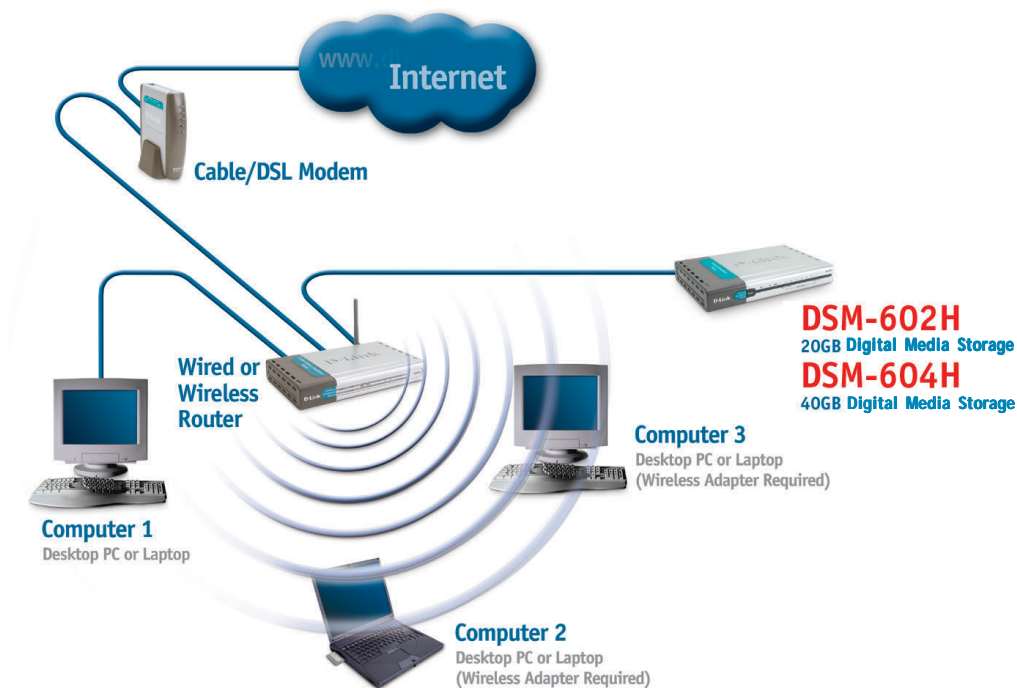


Using a power supply with a different voltage rating will damage and void the warranty of this product.

If any of the above items are missing, please contact your reseller.

# 1 DSM-602H/604H Overview

When you have completed the steps in this Quick Installation Guide, your connected network may look similar to this:



# 2

## Hardware Overview

### Power

Indicates when the DSM-602H/604H is powered on.

### HDD

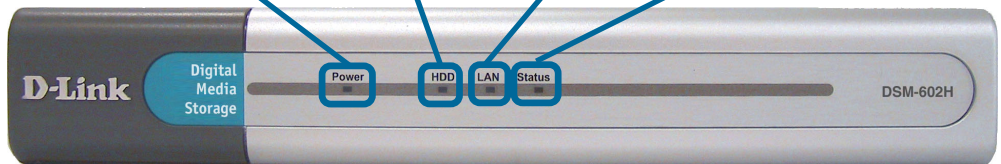
Indicates when there is activity on the hard disk drive.

### LAN

Displays activity on the Local Area Network.

### Status

Status light blinks steadily to indicate proper functionality.

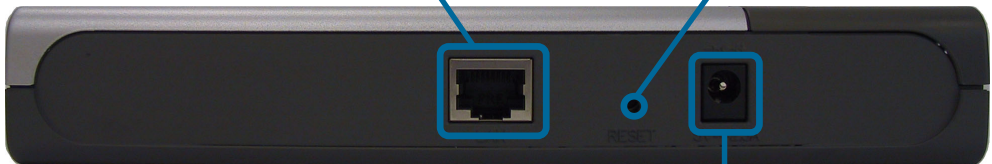


### LAN Port

This allows you to connect the DSM-602H/604H to your Ethernet network. This LAN port also supports Auto MDI/MDI-X.

### Reset Button

Pressing this button restores the DSM-602H/604H to its original factory default settings.



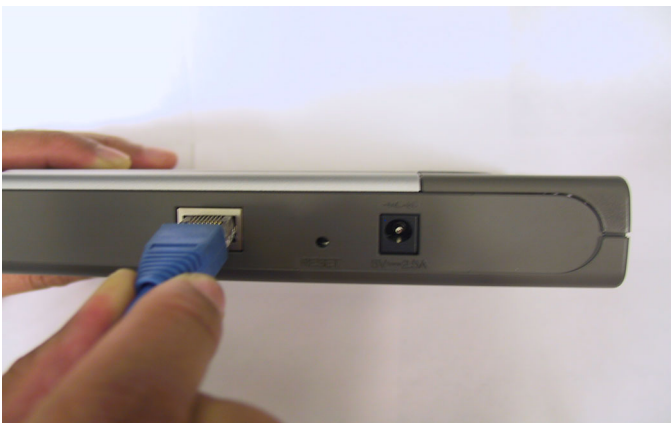
Connector for  
Power Adapter.

# 3 Hardware Installation

- A.** First, connect the power adapter to the connector on the back panel of the DSM-602H/604H. Then plug the other end of the power adapter into a wall outlet or power strip. The Power LED will be on to indicate proper operation.



- B.** Connect an Ethernet cable to the Ethernet jack located on the back of the DSM-602H/604H.



- C.** After the Ethernet cable is securely connected, connect the other end of the Ethernet cable to your network router or switch.



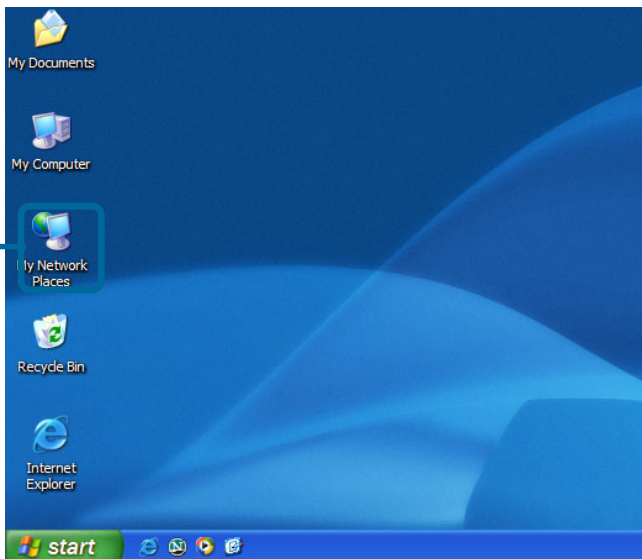
# 4

## Access the DSM-602H/604H in Windows ME or XP

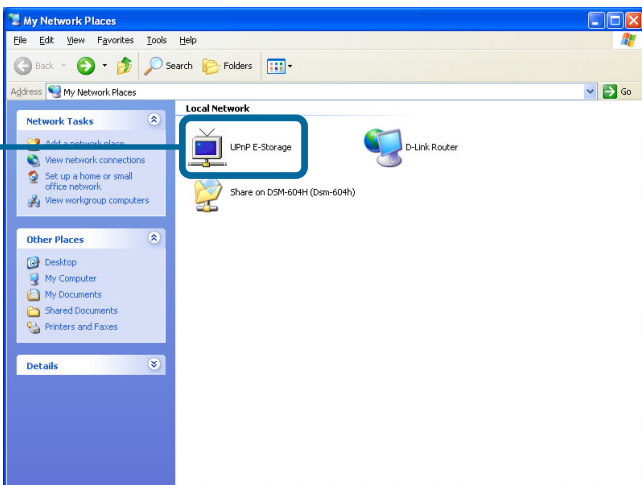


For Windows ME or XP users, it is recommended to activate UPnP for ease of use. To learn how to activate UPnP, please refer to page 20 of the manual.

Double Click **My Network Places** on the Windows Desktop.



Once connected, the DSM-602H/604H will appear on the **My Network Places** screen as **UPnP E-Storage** if UPnP is activated in your Windows ME or XP.

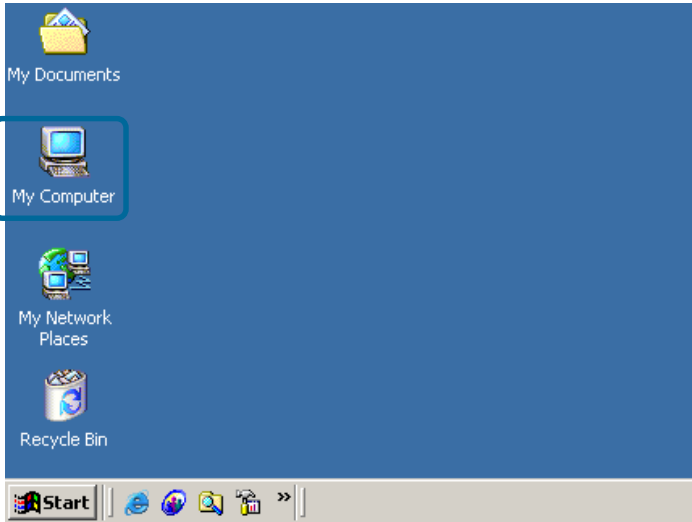


**Your setup in Windows XP or ME is now complete!**

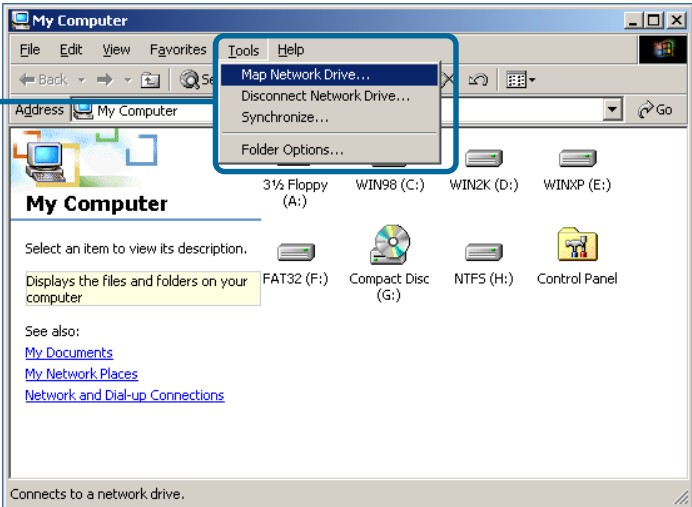
# 5

## Access the DSM-602H/604H in Windows 98 or 2000

Double Click **My Computer** on the Windows Desktop.



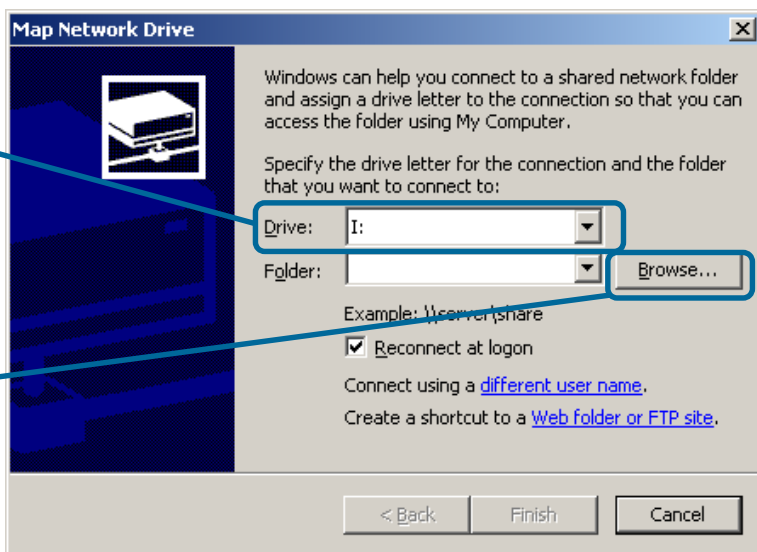
Under **Tools**, select **Map Network Device**.



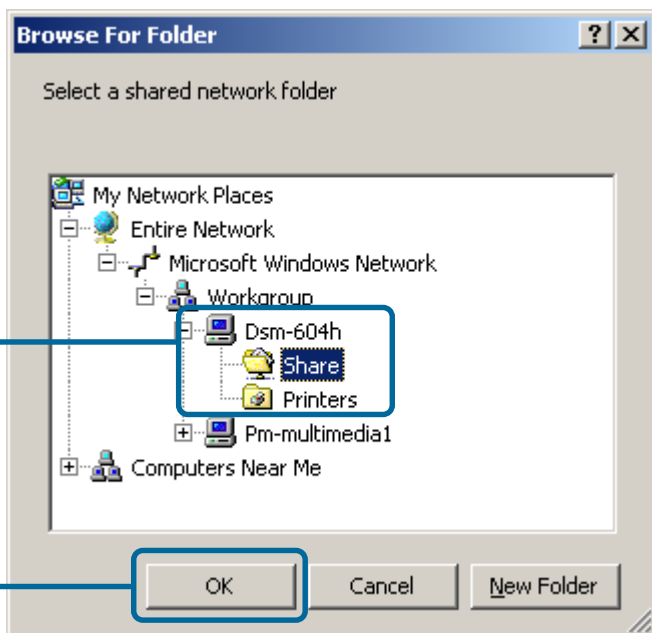
# 5 Access the DSM-602H/604H in Windows 98 or 2000 (continued)

Select the drive name you wish to map your DSM-602H/604H to.

Select **Browse** to connect your DSM-602H/604H from the network.



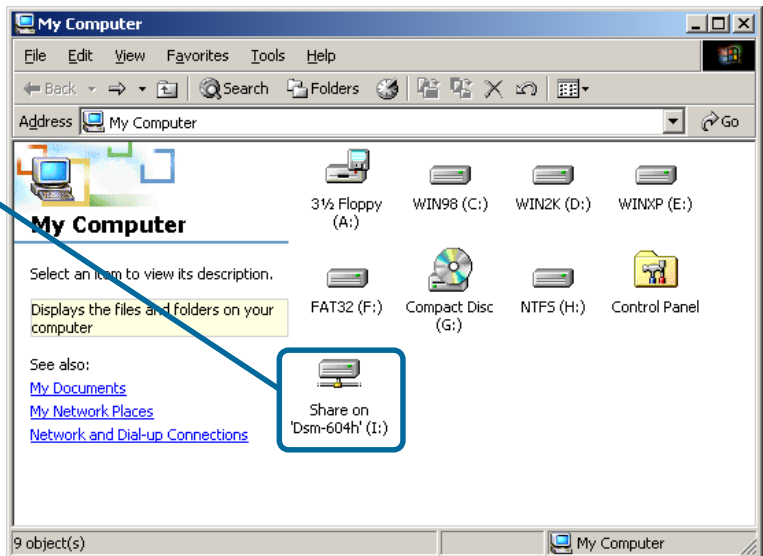
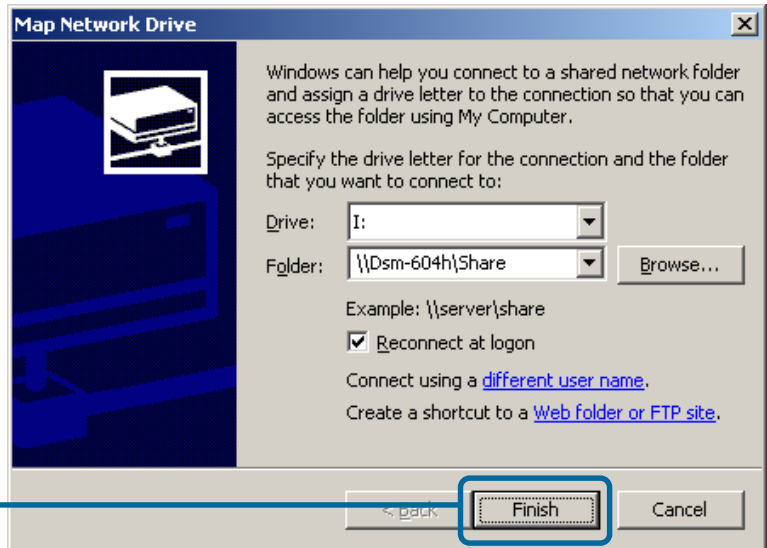
Select your DSM-602H/604H share folder.



Click **OK**.

# 5

## Access the DSM-602H/604H in Windows 98 or 2000 (continued)

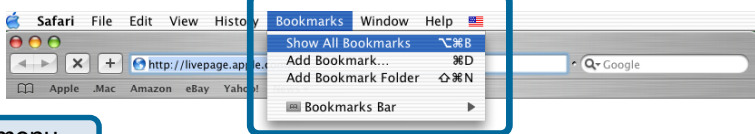


**Your setup in Windows 98 or 2000 is now complete!**

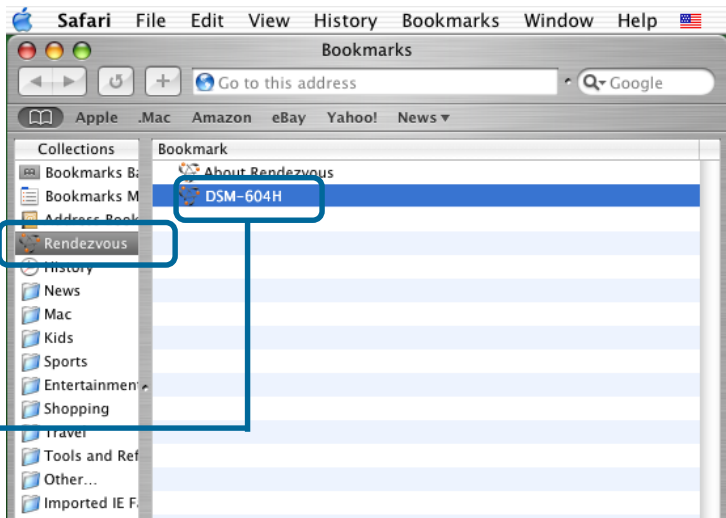
# 6

## Access the DSM-602H/604H in Macintosh OSX

Click **Safari**

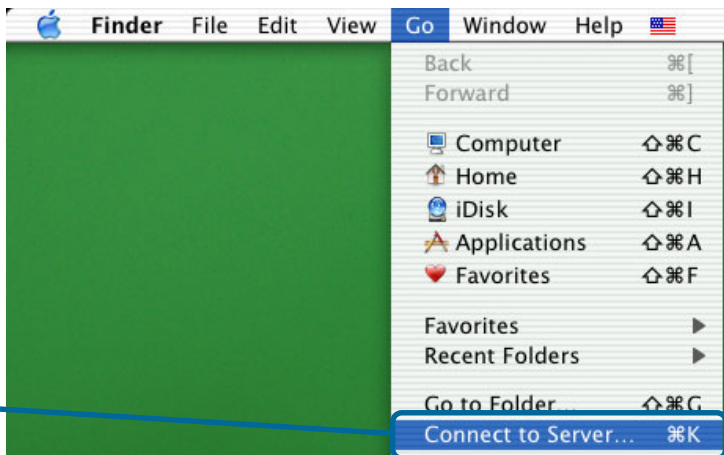


Under the Bookmarks menu, select **Show All Bookmarks**



Select **Rendezvous** from the left window pane.

Then on the right window pane highlight **DSM-602H/604H**.

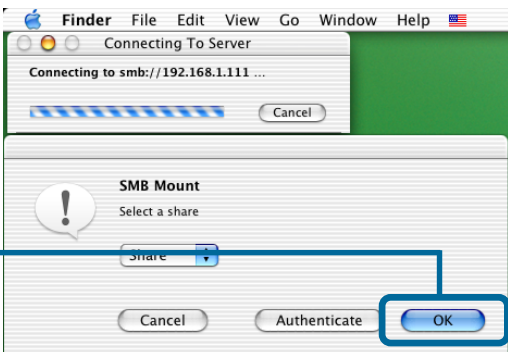
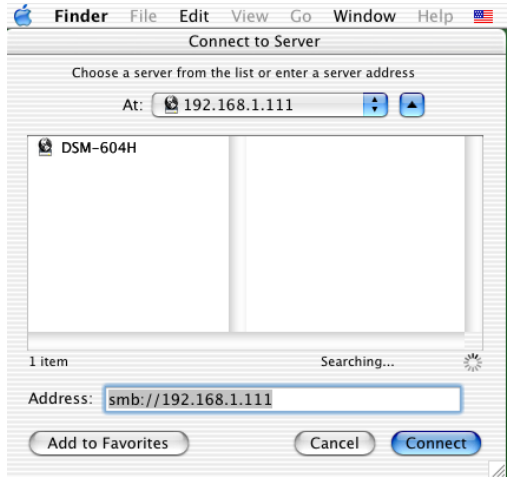


Under **Finder**, select the **Go** menu. Select **Connect to Server**.

# 6

## Access the DSM-602H/604H in Macintosh OSX (continued)

Once Safari loads, the DSM-602H/604H will automatically be found.



Once found, highlight the **DSM-602H/604H** in the left pane window .

Click **Connect**

Click **OK**

# 6

## Access the DSM-602H/604H in Macintosh OSX (continued)



By default, there is no password.

Click **OK**



The **DSM-602H/604H** will appear on your desktop. **Double-click** on the shared drive to access your Digital Media Storage!

**Your setup in MAC OSX is now complete!**

## Technical Support

You can find the most recent software and user documentation on the **D-Link** website.

**D-Link** provides free technical support for customers within the United States and within Canada for the duration of the warranty period on this product.

U.S. and Canadian customers can contact **D-Link** technical support through our website or by phone.

### Tech Support for customers within the United States:

***D-Link Technical Support over the Telephone:***

(877) 453-5465

24 hours a day, seven days a week

***D-Link Technical Support over the Internet:***

<http://support.dlink.com>

email: [support@dlink.com](mailto:support@dlink.com)

### Tech Support for customers within Canada:

***D-Link Technical Support over the Telephone:***

(800) 361-5265

Monday to Friday 8:30am to 9:00pm EST

***D-Link Technical Support over the Internet:***

<http://support.dlink.ca>

email: [support@dlink.ca](mailto:support@dlink.ca)

