

Welcome to a whole new world of digital entertainment! The following steps will help you connect the D-Link DPG-1200 to your router for configuration, then to your home network. Once the PC-on-TV device has been set up, your digital media can be streamed to your TV.



QUICK SETUP GUIDE



INSTALLATION

1 REMOVE CONTENTS FROM THE BOX



* Ethernet cable is required for initial setup and for a wired connection. If you are using a wireless connection, you will not need this cable.

2 WELCOME

Thank you for purchasing this D-Link product. We hope you enjoy your DPG-1200 Media Player. Please insert the supplied CD into your CD-ROM drive and click **Install PC-on-TV**. You will be prompted to view an optional installation video.

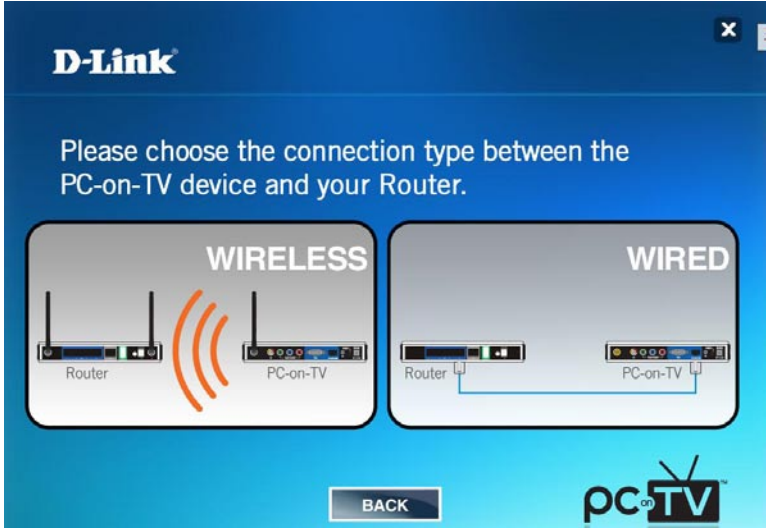
Read and agree to the **End User Agreement** to continue. The software will be installed on your computer. Once the installation is complete, the setup wizard will begin.

This installation wizard will guide you through the setup and installation of your Media Player device. Press **Next** to continue.



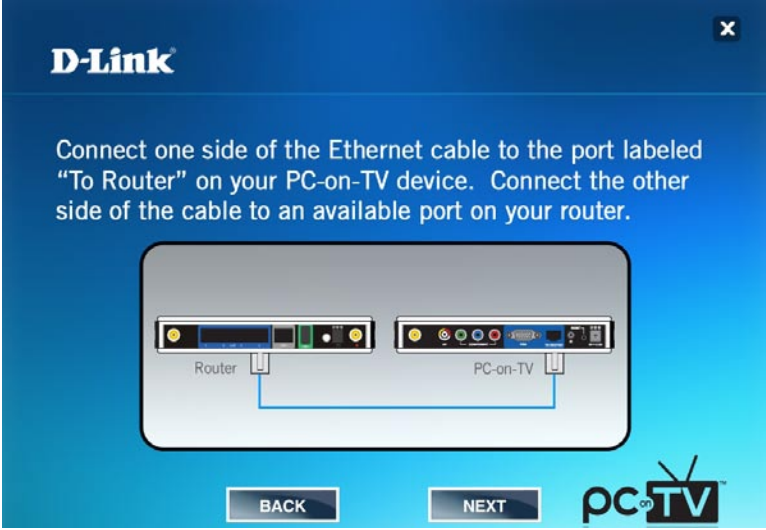
3 SELECT CONNECTION TYPE

Select if you want to connect to the device wirelessly or wired via Ethernet cable. **Note:** If you selected **Wired**, skip to **step 10**.



4 CONNECT TO YOUR NETWORK

Connect the media player to your router with the supplied Ethernet cable, and verify that the computer running the Installation Wizard is connected to the same network. This is a temporary connection for first time device setup only.



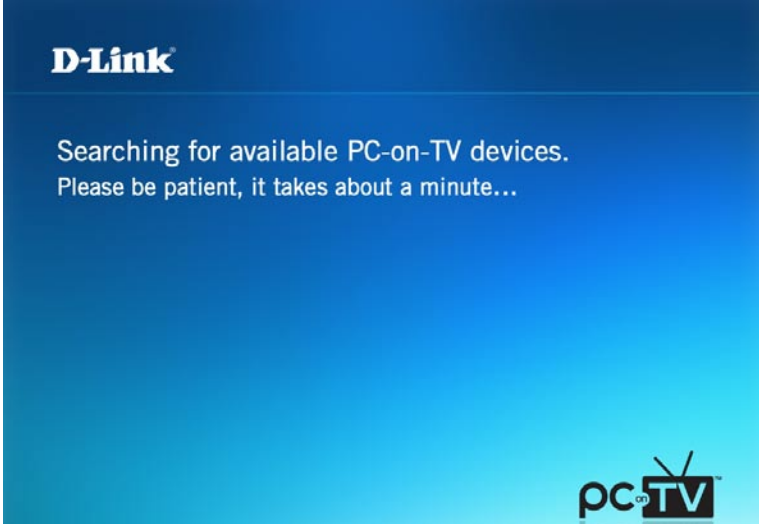
5 PLUG IN THE POWER ADAPTER

Plug the power adapter into the media player and then connect to a power outlet.



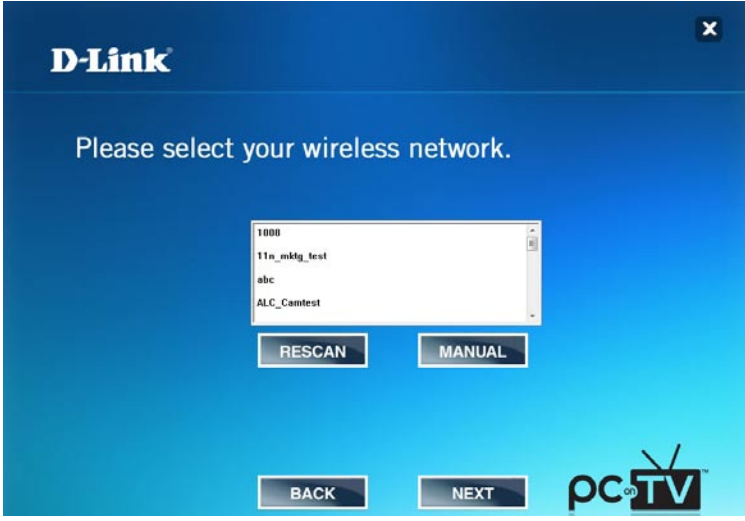
6 DETECTING DEVICES

The software will search for available PC-on-TV devices. Please allow up to 2 minutes. Depending on the number of devices found, the following screen will appear.



7 SELECT YOUR WIRELESS NETWORK

If you selected Wireless, the device will search for available wireless networks. Select the wireless network you would like to connect to.



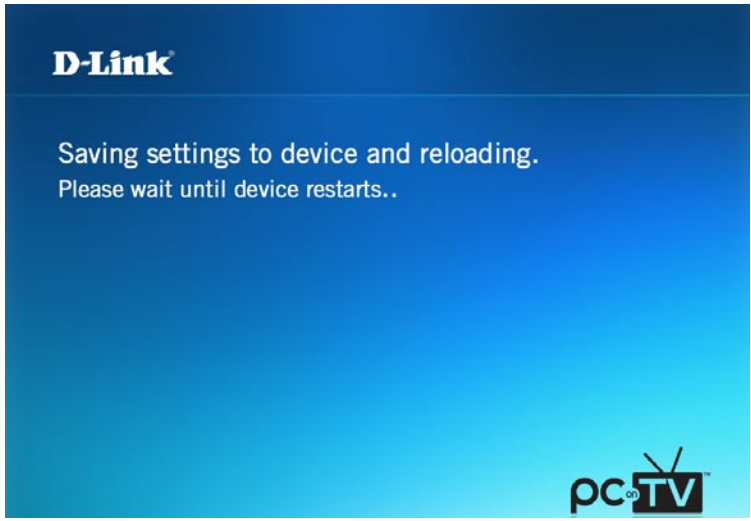
8 ENTER NETWORK PASSWORD

Enter the wireless network password and select Next.



9 REBOOT DEVICE

The unit will now reboot and attempt to connect to your network. This may take about a minute.



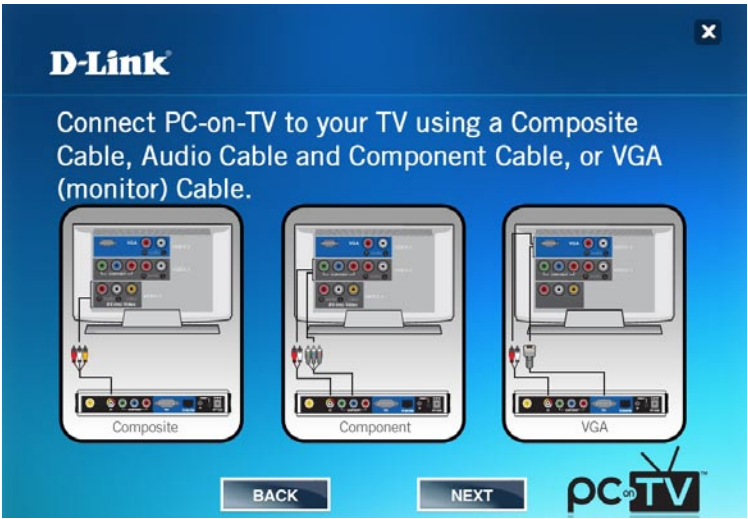
10 CONNECT UNIT TO YOUR TV

Disconnect the PC-on-TV device from your router and place it near your TV.



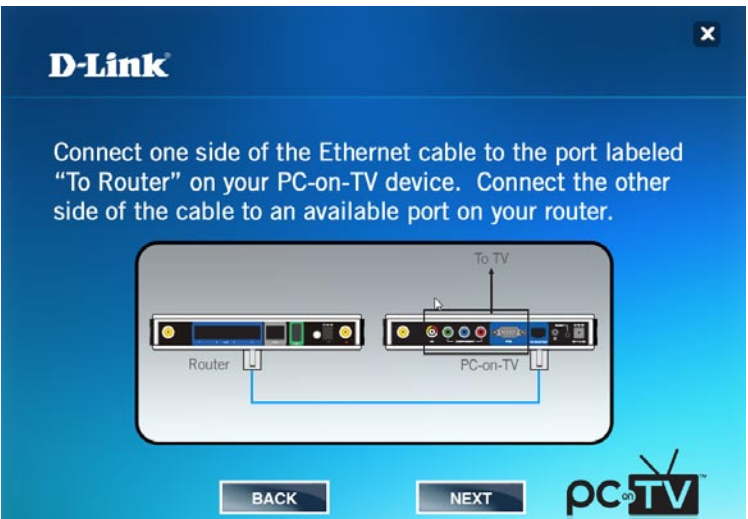
11 CONNECT AUDIO/VIDEO CABLE TO TV

Select one of the 3 connection methods shown below. Click **Next** once you connect the PC-on-TV to your TV.



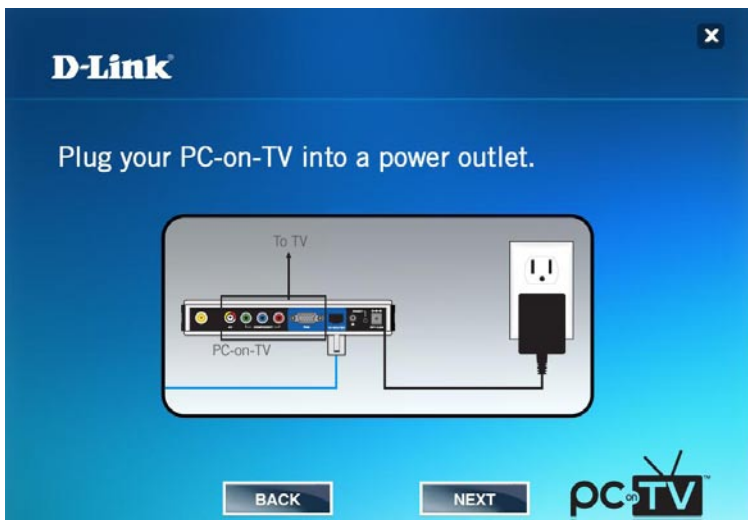
12 CONNECT ETHERNET CABLE

If you are using an Ethernet (wired) connection, attach the Ethernet cable from your router or switch to the PC-on-TV device.



13 CONNECT POWER ADAPTER

Connect the power adapter to the PC-on-TV device and then the other end into a power outlet.



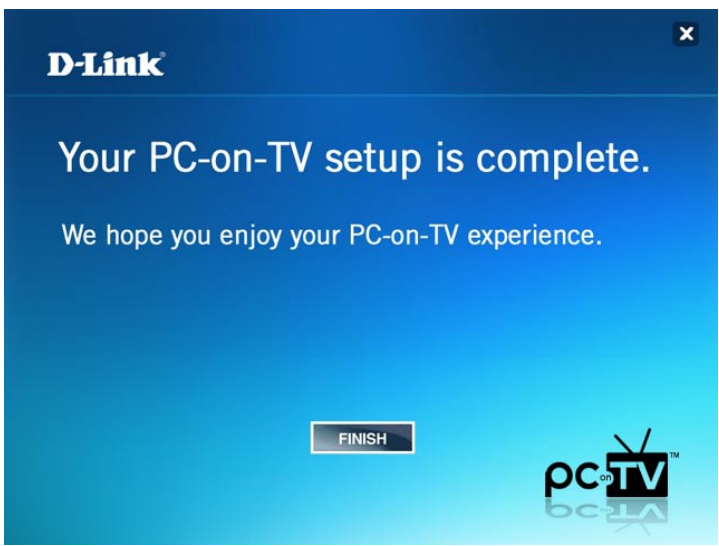
14 SELECT THE TV INPUT SOURCE

From your TV, select the correct input source. Please refer to your TV's user manual for more information.



15 SETUP IS COMPLETE!

Click **Finish** to complete your setup.



16 PC-on-TV SOFTWARE



- **PC-on-TV** - Scans for PC-on-TV devices on the local area network (LAN).
- **Signal** - Displays the wireless signal strength (for wireless connection only).
- **Video** - Click to change to video mode. Use for video streaming content.
- **Photo** - Click to change to photo mode. This is a higher resolution mode which is recommended for photos and slideshows.
- **Hide Screen** - Click to stop projecting the computer images on your TV. This will make the TV screen black and will allow you to use your computer without it showing on your TV.
- **Down Arrow** - Click the blue box with the down arrow to display the advanced configuration options.

REMOTE CONTROL OVERVIEW

Below is the layout of the remote control for the PC-on-TV unit. Make sure you point the remote control at the DPG-1200, not your TV.

- Power Button** - Press to turn on/off the PC-on-TV device.
- Settings Button** - Press to bring up the settings screen.
- Desktop Button** - Press to minimize all open windows.
- Screen Saver Button** - Press to launch your screen saver.
- Number Buttons** - Use to enter numbers.
- Hot Keys** - Press to launch preset URLs.
- Trackball** - Use to control the mouse cursor.



- B Button** - Same as the Back button on your web browser.
- F Button** - Same as the Forward button on your web browser.
- L Button** - Same as your left mouse button.
- Home Button** - Press to launch the PC-on-TV home page.
- R Button** - Same as your right mouse button.
- Navigation Keys** - Same as your keyboard cursor keys. Press Video/Photo button to switch modes.
- Player Buttons** - These buttons can be used with some 3rd party applications.

SUPPORT

U.S. and Canadian customers can contact D-Link® Technical Support through our website or by phone.

United States
Telephone 877-453-5465
Web <http://support.dlink.com>

Canada
Telephone 800-361-5265
Web <http://support.dlink.com>