



# Install Guide

Version 1.0

DCS-G900

## Wireless G Internet Camera

# System Requirements

- Computer with Windows® XP or 2000
- PC with 1.3GHz or above; at least 128MB RAM
- Internet Explorer 6.0 or Netscape Navigator™ 7.0 and above
- Existing 10/100 Ethernet-based network or 802.11g/b wireless network

## Package Contents



**D-Link DCS-G900  
Wireless G Internet Camera**



**5V 2.5A Power Supply**



**Cat 5 Ethernet Cable**



**Manual and Software on CD**



**Camera Stand**



**Antenna**

**Note:** Using a power supply with a different voltage will cause damage and void the warranty for this product.

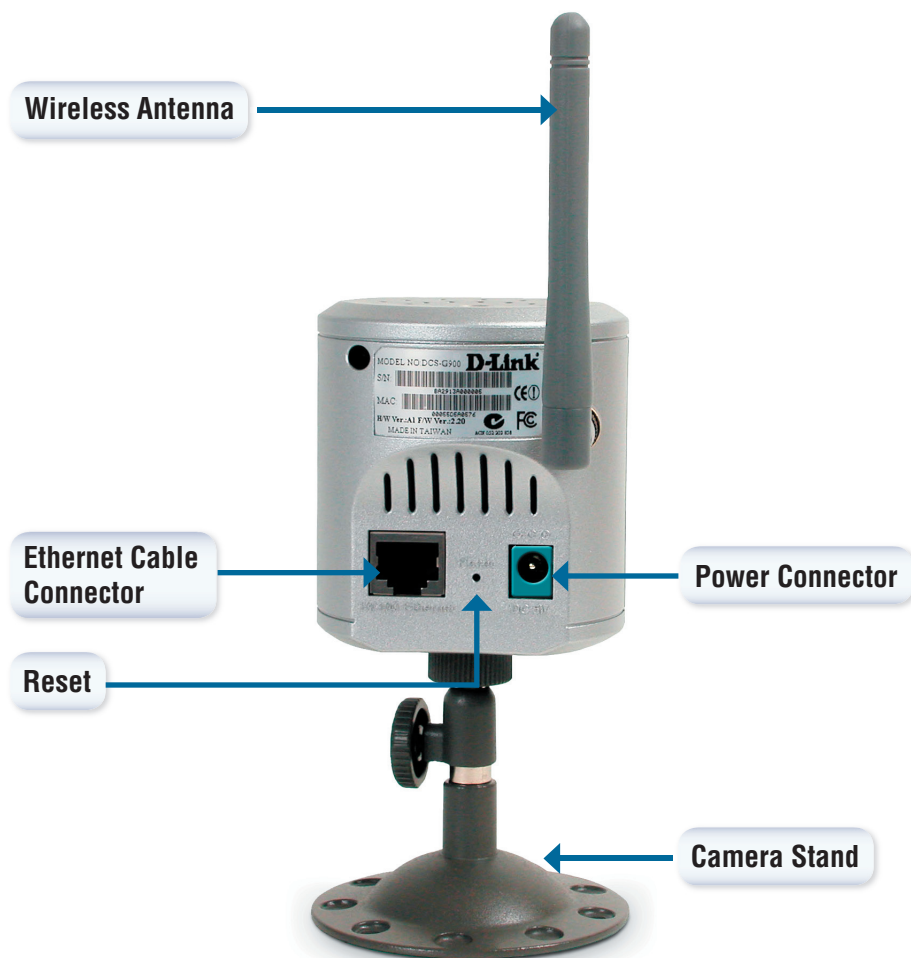
*If any of the above items are missing, please contact your reseller.*

# Hardware Overview

## Front

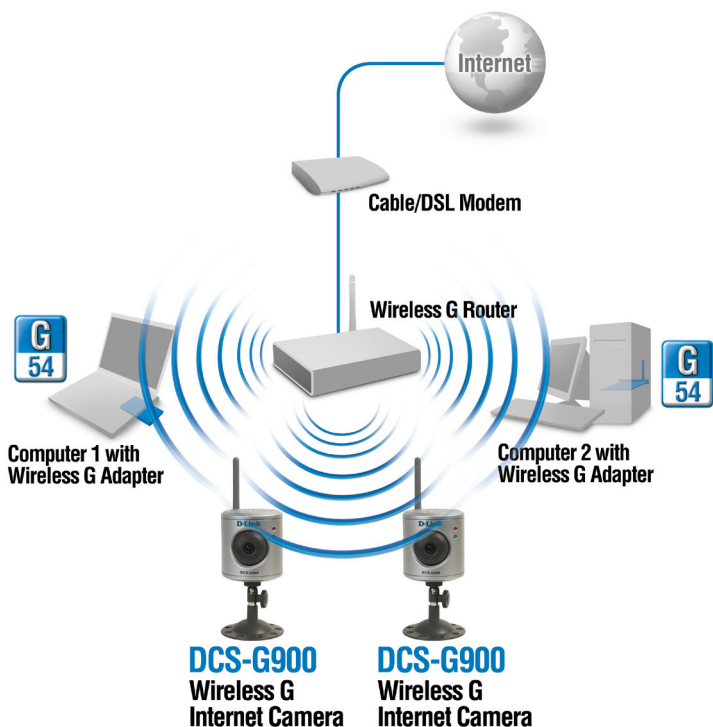


## Rear



# Installation Overview

Once you've completed your DCS-G900 installation, your network may appear similar to the diagram below.



# Hardware Installation

## Attach the Antenna

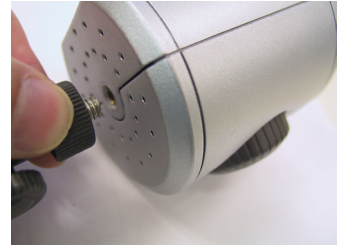
Locate the antenna included with your DCS-G900 and attach it to the antenna connector located on the back of the DCS-G900.

**Note:** *It is required that an Ethernet cable is used during initial setup. Once your wireless configuration is set, you may disconnect the Ethernet cable and begin communicating wirelessly with your DCS-G900.*



## Attach the Swivel Stand

Locate the stand mount on the bottom panel of the DCS-G900 and screw on the swivel stand to the base of the DCS-G900.



## Connect the Ethernet Cable

Connect the included Ethernet cable to the network cable connector located on the back panel of the DCS-G900 and attach it to the network. Network connectivity is confirmed when the green LED Indicator on the DCS-G900, located below the Power LED, is illuminated.



## Attach the External Power Supply

Attach the external power supply to the DC power input connector located on the rear panel of the DCS-G900 and connect it to your local power supply.

**Note:** *Power source is confirmed when the red LED Power Indicator located to the right of the lens on the DCS-G900 is illuminated.*

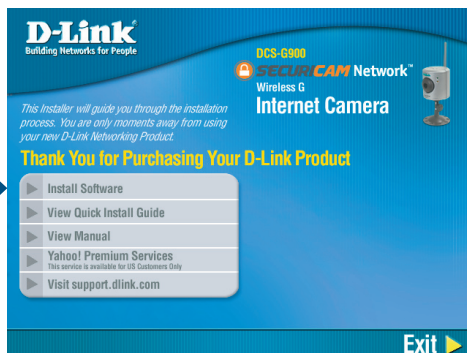


# Configuration

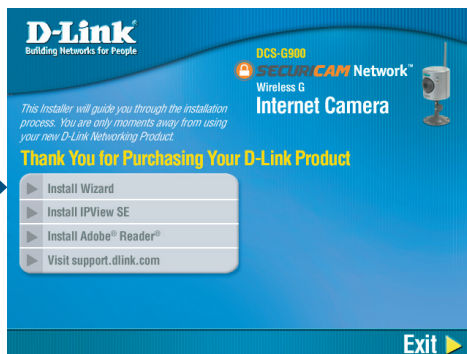
You are now ready to run the Setup Wizard, which will guide you quickly through the installation process.

Insert the **D-Link DCS-G900** Driver CD into your CD-ROM drive.

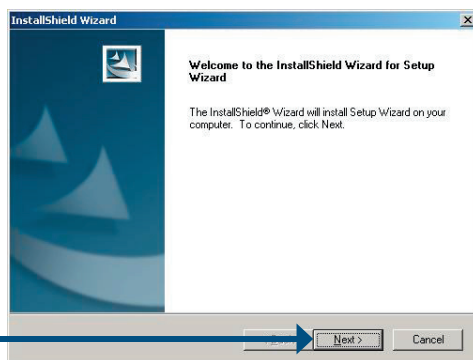
Click **Install Software**

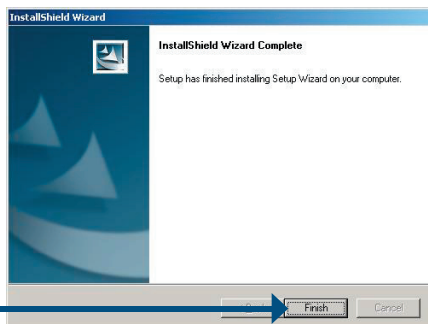
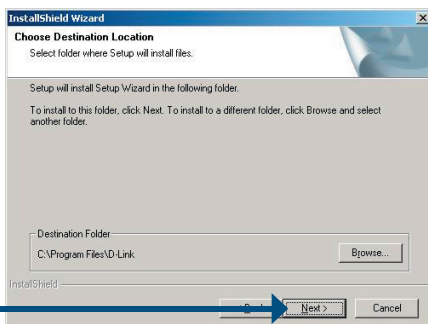
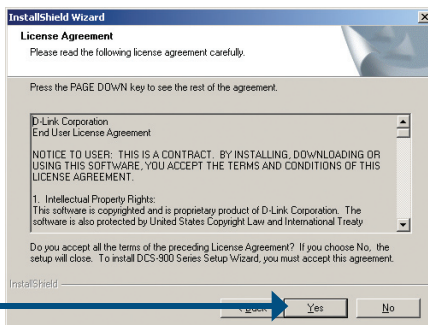


Click **Install Wizard**



Click **Next**



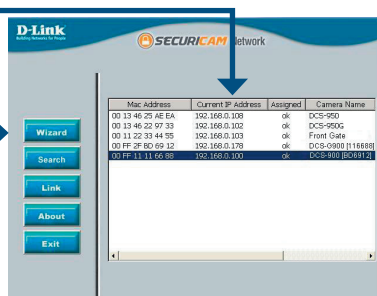




To run the Setup Wizard, click on: **Start >Programs >D-Link Setup Wizard.**

Your camera's IP Address will be displayed here along with its corresponding MAC Address.

Click **Wizard**

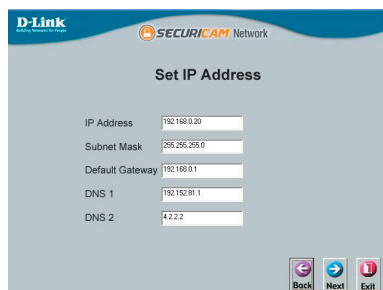


You must change the **Admin ID** and **Password** immediately to protect your camera against unauthorized access. By default, the Admin ID and Password are blank. To change the Admin ID and Password, select both **Change** boxes and enter a **New ID** and **New Password**.



Click **Next**

Enter an **IP Address** and **Subnet Mask** for your camera if you want to change the current settings. Enter your **Gateway** and **DNS** settings. These settings must correspond with your network settings for you to access the camera. If you are unsure of what these settings should be, check with your network administrator.



Click **Next**

The **Connection Mode** depends on how your camera is connected to your network. Click **Infrastructure** for use with a router or **Adhoc** for a peer-to-peer connection. The **Network Name (SSID)**, **Wireless Channel**, **Security Mode**, and **Authentication** must correspond with your wireless network settings for the camera to work.

Click **Next**

Enter the **Encryption Mode**, **Key Format**, and **Encryption Keys** for your wireless network.

Click **Next**

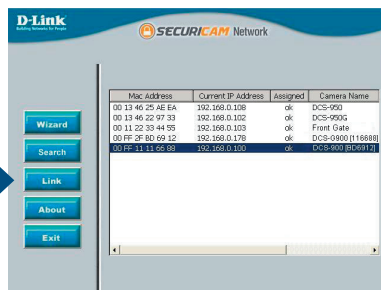
If you need to make any changes, click **Back** to modify your settings. Otherwise, click **Restart** to save and apply your settings.

Click **Restart**

**Your setup is now complete!**

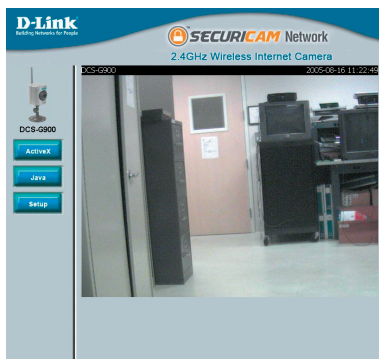
Click **Link** to launch your web browser and view your images.

Click **Link**



The Home screen of your camera can be accessed from the Setup Wizard using the **Link** button. You can also use your favorite Web browser, type “http://**address**” in the address box where **address** is the IP address that you assigned to the DCS-G900 from the previous section. Press **Enter**.

Click **ActiveX** or **Java** to view your video images.



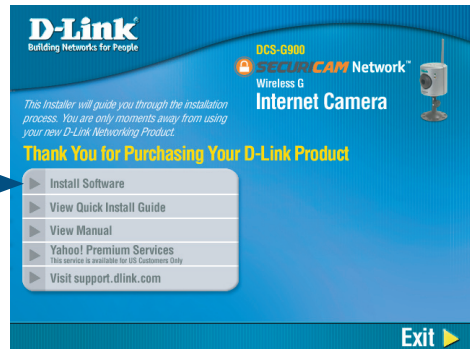
- Make sure that you have the latest version of Java installed on your computer to ensure proper operation when viewing the video in Java mode. Java can be downloaded for free from Sun's web site. (<http://www.java.com>)
- When you connect to the home page, you will be prompted to download ActiveX. If you want to use ActiveX to view your video images instead of Java, then you must download ActiveX.
- Please refer to the Manual located on the CD-ROM for additional information regarding all features and instructions related to the DCS-G900.

# IPView SE Application Installation

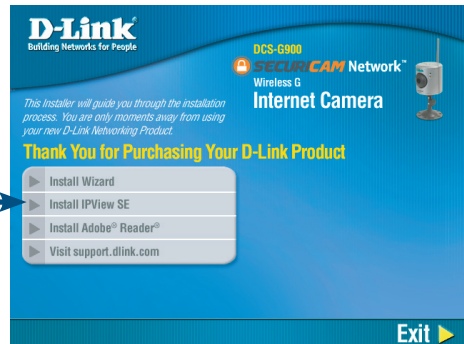
IPView SE software is included for administrators to manage up to 4 DCS-G900s remotely. Administrators can also record to hard drive and configure advanced settings for the DCS-G900. IPView SE is a complete software management tool for the DCS-G900 and includes all configurable settings available in the web configuration utility.

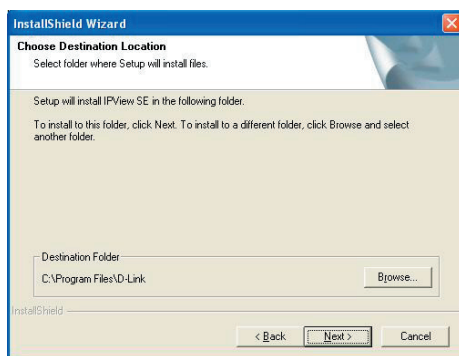
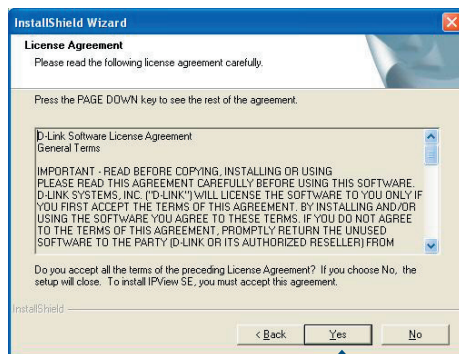
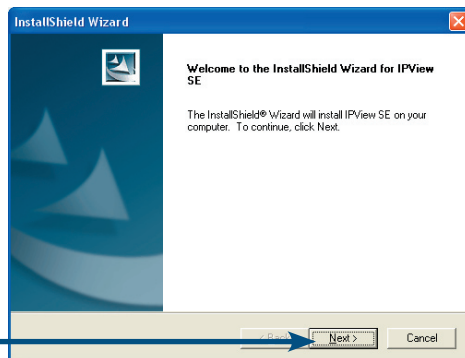
Insert the CD-ROM into the CD-ROM drive. A menu screen will appear as shown below.

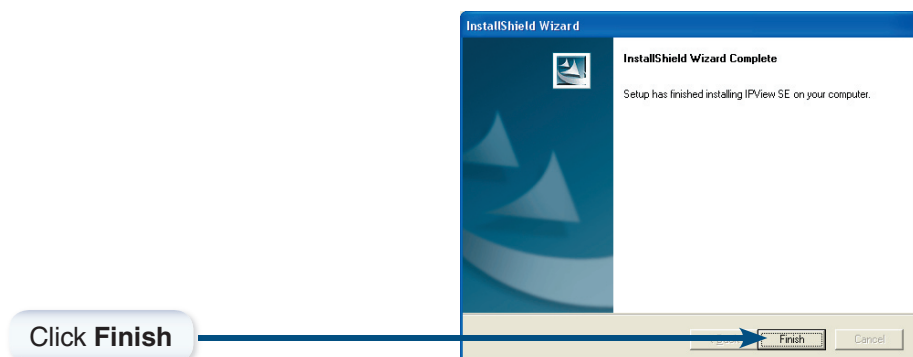
Click Install Software



Click Install IPView SE



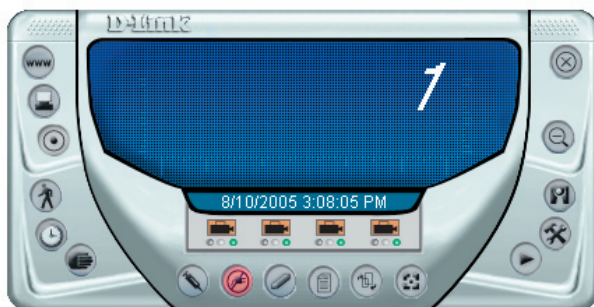





After successfully installing the IPView SE, the application program for the DCS-G900 is automatically installed to \Programs\IPView SE Directory.

To start IPView SE, click on Windows® Start > Programs > IPView SE > IPView SE.

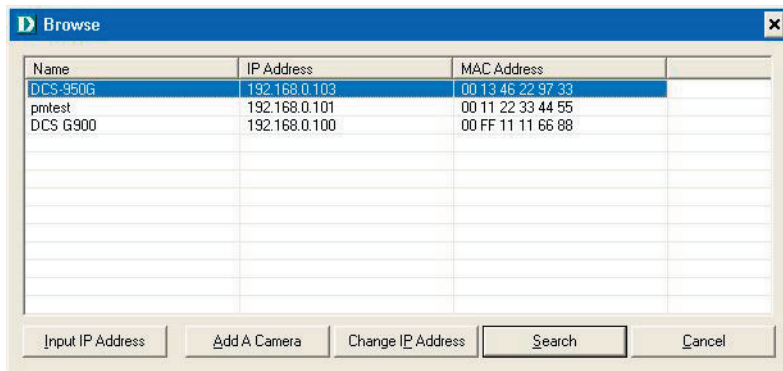
Once the IPView SE application control panel is executed, the interface will appear:



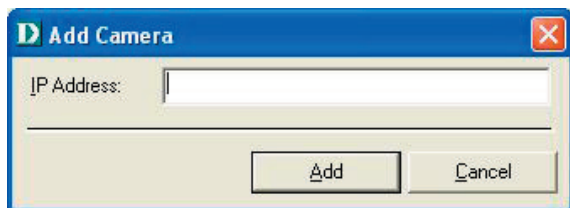
# Add a New Camera

To add a new camera select the **Camera** button  from the IPView SE. Make sure that the green lights are on when clicking the camera button.

A green light under the camera button means that there is already a camera connected.



Select the camera you would like to connect to and click **Add A Camera**. If the camera is not listed in this list, click the **Input IP Address** button. Enter the IP Address of the camera in the specified field and click **Add**. If the IP Address is entered incorrectly or if you have a bad network connection, a dialog box will appear to notify you of the error. To add cameras in IPView SE, check that you have your network configured correctly. To add a remote camera, you need to have Internet access.



If you are unsure of the IP Address of the camera, you can click on **Search** to search for all available cameras that are installed on your local area network.

**Note:** Only cameras on your local area network can be located using **Search** in IPView SE. If you want to add a camera via the Internet, you must enter in a public IP Address. Please note that if your camera is behind a router, you will need to enter your router's WAN IP followed by a colon, then the port number that is assigned to your camera. As in example 10.10.10.80:800, where 10.10.10.80 is your router's WAN IP and :800 is the port that your camera is using.

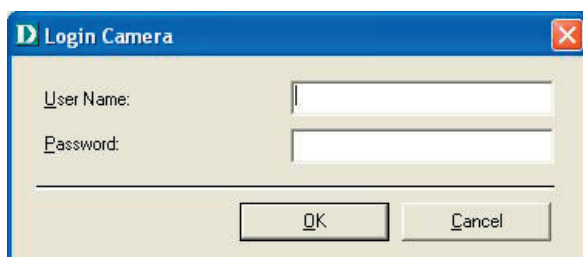
Highlight the camera you wish to add and click on **Add**. The camera will automatically be added into the IPView SE list view. If you add the same camera more than once you will receive the following message (see below).





If the **Login Camera** dialog box appears, enter the correct **User Name** and **Password**. Click **OK**. The camera will be added into IPView SE. If the **User Name** and **Password** are entered incorrectly, the camera will not be added into IPView SE.


The Login Camera dialog box will appear only if you have already set the **Username** and **Password** during the Web Configuration setting.



Once you login, the following screen will appear.



# How to Format the Camera View

Select the **Combine** button  on the IPView SE and you should see all four cameras combined (see image below).



A maximum of 4 cameras can be viewed simultaneously with IPView SE.



Select any of the four cameras from the View Mode. If a green light is next to the camera button, then this indicates that a camera is connected to the IPView SE control panel.

Please refer to the Manual located on the CD-ROM for additional information regarding IPView SE.

# Notes

# Technical Support

D-Link's website contains the latest user documentation and software updates for D-Link products.

D-Link provides free technical support for customers within the United States and Canada for the duration of the product's warranty period.

U.S. and Canadian customers can contact D-Link Technical Support through our website or by phone.

## United States

### Telephone

(877) 453-5465

Twenty four hours a day, seven days a week.

### World Wide Web

<http://support.dlink.com>

### E-mail

[support@dlink.com](mailto:support@dlink.com)

## Canada

### Telephone

(800) 361-5265

Monday through Friday, 7:30am to 9:00pm EST.

### World Wide Web

<http://support.dlink.ca>

### E-mail

[support@dlink.ca](mailto:support@dlink.ca)



Version 1.0

Revised 10/21/2005

©2005 D-Link Corporation/D-Link Systems, Inc. All rights reserved. D-Link and the D-Link logo are registered trademarks of D-Link Corporation or its subsidiaries in the United States and other countries. Other trademarks are the property of their respective owners. All references to speed are for comparison purposes only. Maximum wireless signal rate derived from IEEE Standard 802.11g specifications. Actual data throughput will vary. Network conditions and environmental factors, including volume of network traffic, building materials and construction, and network overhead, lower actual data throughput rate. Environmental factors may adversely affect wireless signal range. Product specifications, size, and shape are subject to change without notice, and actual product appearance may differ from that depicted herein. Visit [www.dlink.com](http://www.dlink.com) for more details.

DCS-G900 10212005