

DCS-3411/DCS-3430

Version 1.00

Fixed Day & Night Network Camera
(DCS-3411)

Wireless N Fixed Day & Night Network Camera
(DCS-3430)

Quick Install Guide

System Requirements

- InWindows® XP or Windows Vista®
- At least 256MB of memory (512MB recommended)
- An available Ethernet connection
- Wireless 802.11n network (for DCS-3430 only)
- Internet Explorer 6.x or higher Internet Web Browser
- VGA card resolution: 800x600 or above
- CPU: 1.7GHz or above processor (2.8GHz plus processor with 512MB memory and a 32MB video card is required for multiple camera viewing and recording using the D-ViewCam software)

Package Contents



DCS-3411/3430
Fixed Day & Night Network Camera



2 Antennas
(DCS-3430 only)



Camera Mounting Bracket



CD-ROM with Manual and
Setup Wizard



CAT5 Ethernet Cable



12V Power Adapter

If any of the above items are missing, please contact your reseller.

Hardware Overview

Connections

DC Power Connector

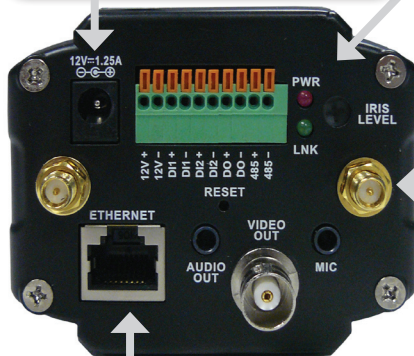
The DC power input connector is located on the DCS-3411/3430 Network Camera's back panel and is labeled 12V DC with a single socket to supply power to the Network Camera.

Power LED

The power LED is on the back of the camera. As soon as the power adapter is connected to the camera, the LED will turn red.

Antenna Connectors (DCS-3430)

Connects to the wireless antennas.



Ethernet Cable Connector (PoE)

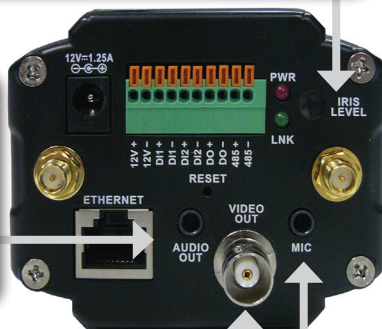
The Network Camera's back panel features an RJ-45 connector for connections to 10Base-T Ethernet cabling or 100Base-TX Fast Ethernet cabling. This network port supports the NWay protocol, allowing the Network Camera to automatically detect or negotiate the transmission speed of the network. The Ethernet port can also be used to power the camera using a PoE switch (DCS-3411 only).

Iris Level

Used only when the DC-Iris lens is connected to the camera. When adjusting the Iris level, you can determine the brightness of the video images.

Audio Out Connector

The DCS-3411/3430 provides an Audio Out connector to be used for 2-way audio. Speakers (not included) may be connected to the camera to provide audio for 2-way communication.



BNC

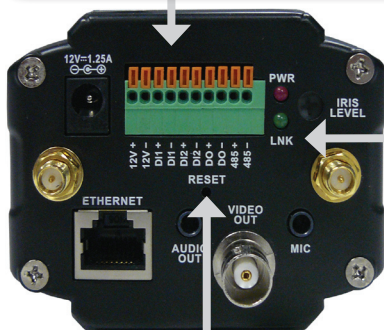
The BNC connector is used for professional video connections. It benefits users who integrate digital IP camera into traditional system (CCTV) for both analog and digital video streaming purpose.

Microphone Connector

The DCS-3411/3430 Day & Night Network Camera has an internal microphone built-in. However, you have the option of using an external microphone by plugging it into the microphone connector.

I/O Connector

The DCS-3411/3430 provides a terminal block with three pairs of connectors situated on the back panel. Two pairs are for input and the other is for output. The I/O connectors provide the physical interface to send and receive digital signals to and from a variety of external devices.



Link LED

Once a connection has been established via Ethernet port, the LINK LED will turn solid green. If traffic is passing to the camera, the LINK LED will blink. If no ethernet connection is detected, the LINK LED will not light up.

Reset Button

Reset will be initiated when the reset button is pressed once and held until the Power LED flashes through its cycle twice.



DC-Iris Connector

The Camera supports additional DC-Iris lens, and provides the power and control signal required for adjusting the lens through this DC-Iris connector (4-pin). You can attach any standard DC-Iris lens (optional) for a specific purpose, such as outdoor applications.

Hardware Installation

Attach the Antennas (DCS-3430 only)

Locate the antennas included with your DCS-3430, and attach them to the antenna connectors located on the back of the DCS-3430.



*Maximum wireless signal rate derived from IEEE Standard 802.11g and draft 802.11n specifications. Actual data throughput will vary. Network conditions and environmental factors, including volume of network traffic, building materials and construction, and network overhead, lower actual data throughput rate. Environmental factors will adversely affect wireless signal range.

Connect the Ethernet Cable

Connect an Ethernet cable to the network cable connector located on the Network Camera's back panel and attach it to the network.



Connect Using Power-Over-Ethernet (DCS-3411 only)

Once you connect an Ethernet cable to your PoE switch or adapter, the Power LED on the DCS-3411 will turn green to indicate a proper connection and power to the unit.

Attach the External Power Supply

If you are not using Power-over-Ethernet, attach the external power supply to the DC power input connector located on the Network Camera's back panel (labeled DC 12V) and connect it to an AC power outlet.

Note: When you have a proper connection, the LED will turn red. The light may cycle on and off and your computer may show an intermittent loss of connectivity, this is normal until you have configured your Network Camera.



Software Installation

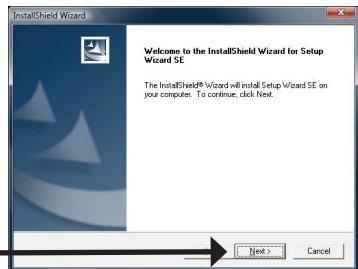
Insert the DCS-3411/3430 CD into the CD-ROM drive. If the CD Autorun function does not automatically start on your computer, click **Start > Run**. In the Run command box type “**D:\DCS-3411_3430.exe**”, where D: represents the drive letter of your CD-ROM. If it does start, proceed to the next screen.

Click **Setup Wizard**



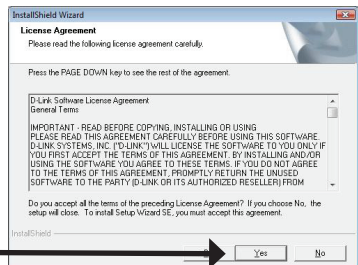
Click **Next** to continue.

Click **Next**



Click **Yes** to accept the License Agreement.

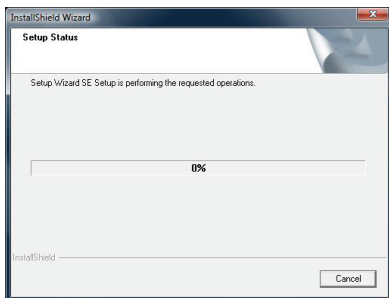
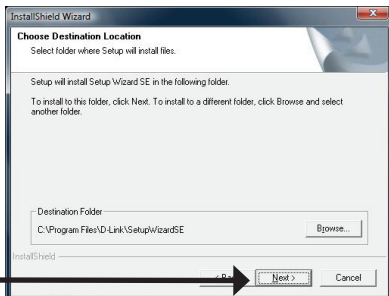
Click **Yes**



To start the installation, click **Next**.

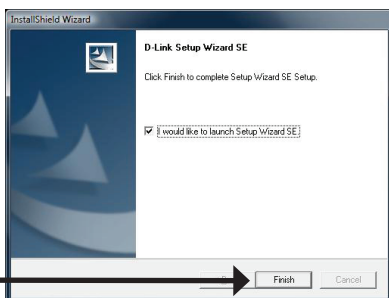
Note: The installation may take several minutes to complete.

Click **Next**



Click **Finish** to complete the installation.

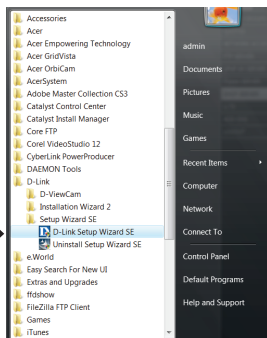
Click **Finish**



Configuring Your Camera with the Setup Wizard

Click on the **D-Link Setup Wizard SE** icon that was created in your Windows Start menu.

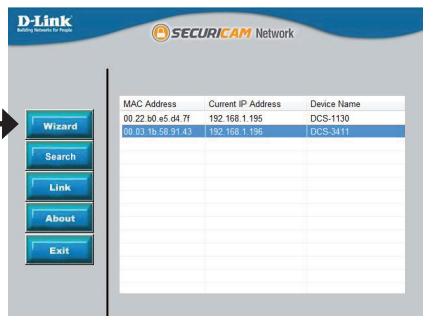
Click **D-Link Setup Wizard SE**



The Setup Wizard will appear and show the MAC address of the DCS-3411/3430 and an IP Address (which may or may not be correct depending on what you have your DCS-3411/3430 connected to). If you have a DHCP server on your network, there will be a valid IP Address displayed here.

Note: A DHCP server is a device that supplies the same IP address.

Click the **Wizard** button



Configuration

Enter the admin ID and password.

Note: The default Admin ID is **admin** with the password left blank.



D-Link
Building Networks for People

SECURICAM Network

Set up an Admin ID and Password to secure your camera.
Click Next to continue.

Admin ID: Password:

☐ Change

New ID: New Password:

Reconfirm: Reconfirm:

Back Next Exit

Click **Next**

Select DHCP if you want to obtain a new IP address every time the camera boots up.



D-Link
Building Networks for People

SECURICAM Network

Set IP Address

☒ DHCP

☐ Static IP

IP Address:

Subnet Mask:

Default Gateway:


Primary DNS:

Secondary DNS:

Back Next Exit

Click **Next**

Select static IP to use the same IP address at each boot up.



D-Link
Building Networks for People

SECURICAM Network

Set IP Address

☐ DHCP

☒ Static IP

IP Address:

Subnet Mask:

Default Gateway:

Primary DNS:

Secondary DNS:

Back Next Exit

Click **Next**

D-Link
Building Networks for People

SECURICAM Network

Admin ID:

Password:

IP Address:

Subnet Mask:

Default Gateway:

Primary DNS:

Secondary DNS:

Now you have configured all settings. Please click button 'Restart' to commit the settings to the Internet camera and reboot it. Or, you can click button 'Back' to change the settings again.

[Back](#) [Restart](#)

Click **Restart**

Viewing Your Network Camera

Click the button labeled **Link** to access the web configuration. The Setup Wizard will automatically open your web browser to the IP address of the DCS-3411/3430, in this example it is: <http://192.198.0.185>. Your DCS-3411/3430 may have a different IP Address.

D-Link
Building Networks for People

SECURICAM Network

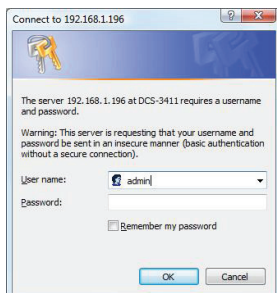
[Wizard](#)
[Search](#)
[Link](#)
[About](#)
[Exit](#)

MAC Address	Current IP Address	Device Name
00 03 1b 58 91 43	192.168.1.196	DCS-3411
00 22 b0 e5 d4 7f	192.168.1.195	DCS-1130

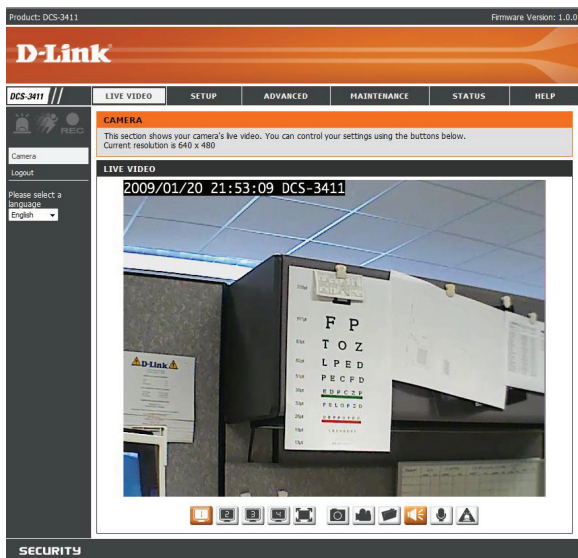
Click **Link**

Configuration

Enter **admin** as the default username and leave the password blank. Click **Log In** to continue.



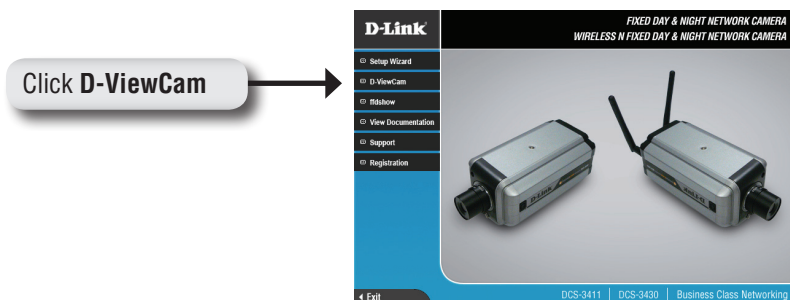
This section shows your camera's live video. You can select your video profile and other options; such as Snapshot, Recording, etc. For more information on using the web configuration, please refer to the user manual.



D-ViewCam Installation

D-ViewCam software is included for the administrator to manage up to 32 D-Link IP cameras remotely. The administrator can also record the video to hard drive and configure advanced settings. D-ViewCam is a complete management tool and includes all configurative settings.

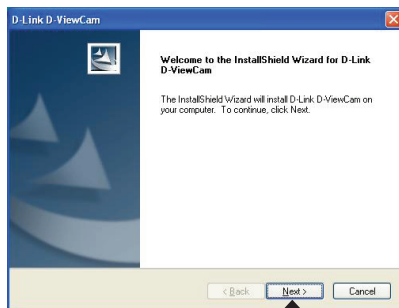
Insert the CD-ROM into the CD-ROM drive. A menu screen will appear as shown below.



D-ViewCam provides English, Traditional Chinese and Simplified Chinese setup language versions. Select a language version and click **OK** to continue.

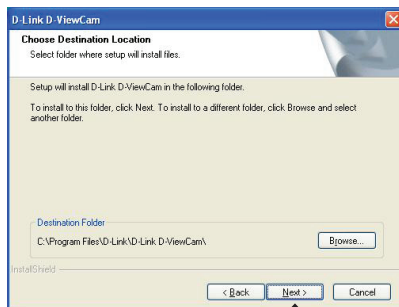


Click **Next** to continue.



Click **Next**

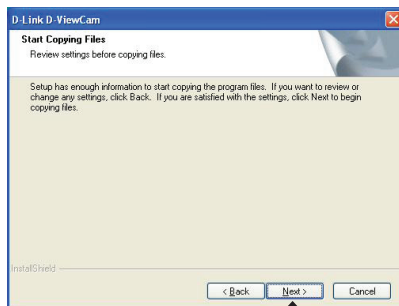
Click **Browse** if you would like to choose a specific folder for the installation, otherwise click **Next** to continue.



Click **Next**

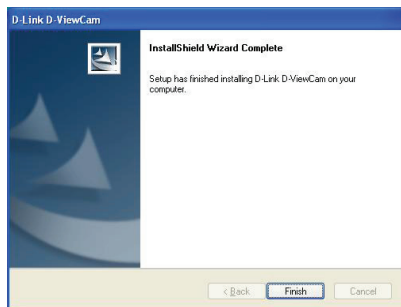
Click **Next** to start the installation.

Note: The D-ViewCam installation process may take several minutes to complete.



Click **Next**

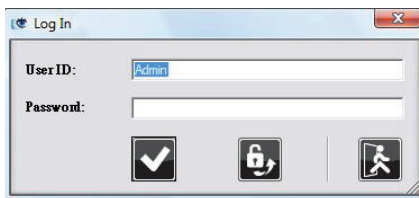
Click **Finish** to complete the installation.



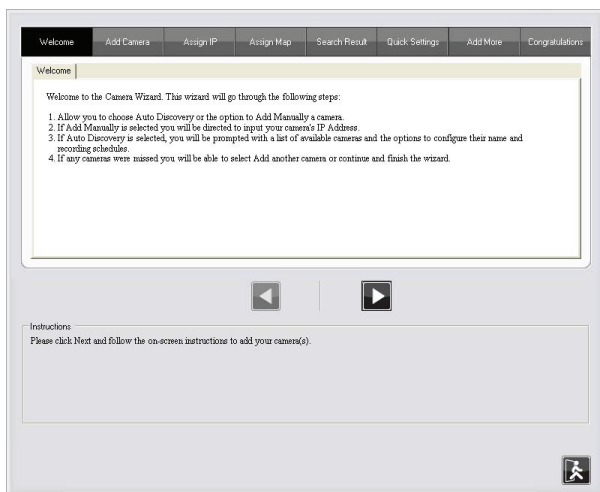
Add a Camera

To start D-ViewCam, click on Windows® Start > All Programs > D-Link > D-Link D-ViewCam.

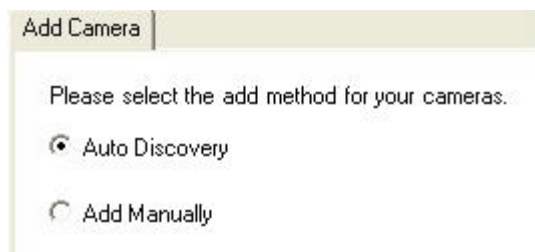
Use **Admin** as the default user name and leave the password blank. Click the **(Check ✓ Box)** to continue.



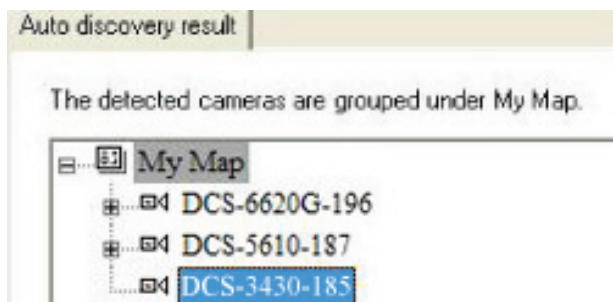
The D-ViewCam screen will appear as shown below. Click **(Next) ►** to begin the Add Camera wizard.



Choose either to add camera(s) by automatically searching for camera(s) or to add camera(s) manually.



If you choose **Auto Discovery**, the system will search all available cameras that are located in the same subnet within the same LAN. The system will place all found cameras under the default map called My Map. Click **Next** to continue.

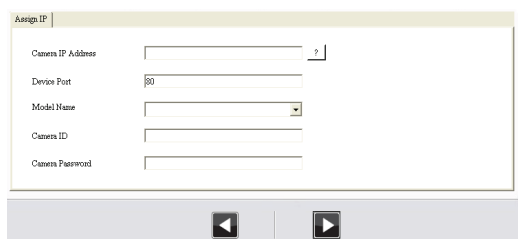


If you choose **Add Manually**, enter the IP address or domain name, http port, model name, camera ID and password.

Click the “?” button to auto detect the camera’s model name, then the model name will appear in the **Model Name** box.

Add a Camera

Click **Next** to continue.

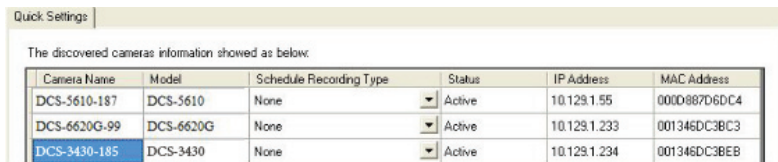


The 'Assign IP' window contains the following fields:

- Camera IP Address: A text input field with a question mark icon to its right.
- Device Port: A text input field containing the value '80'.
- Model Name: A dropdown menu.
- Camera ID: A text input field.
- Camera Password: A text input field.

At the bottom of the window are two navigation buttons: a left-pointing arrow and a right-pointing arrow.

The system shows the detected IP Camera(s) information and user can set the schedule recording type.



The 'Quick Settings' window displays the following table:

The discovered cameras information showed as below:

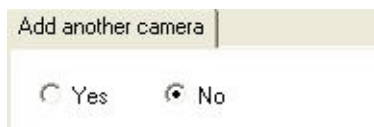
Camera Name	Model	Schedule Recording Type	Status	IP Address	MAC Address
DCS-5610-187	DCS-5610	None	Active	10.129.1.55	000D887D6DC4
DCS-6620G-99	DCS-6620G	None	Active	10.129.1.233	001346DC3BC3
DCS-3430-185	DCS-3430	None	Active	10.129.1.234	001346DC3BEB

User can modify the schedule recording type:

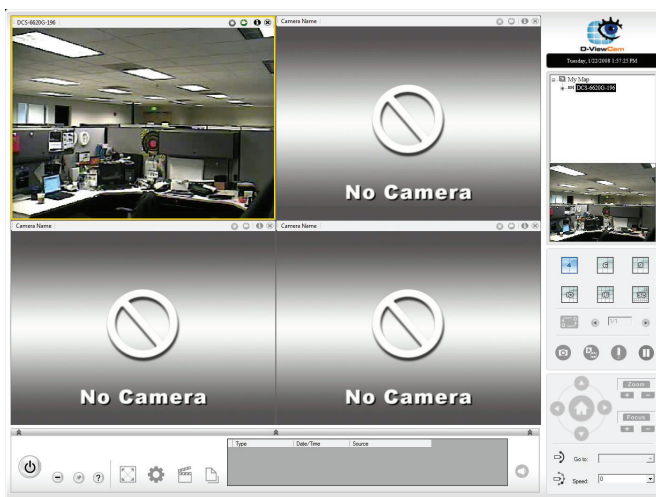
- **24/7 Continuous Recording:** Continuously record 24 hours a day, 7 days a week.
- **24/7 Motion Detection Recording:** Continuously monitor, but ONLY record when motion is detected.
- **Office Hours Only:** Continuously monitor during office hours (08:00 AM to 06:00 PM), and ONLY record when motion is detected.
- **Non-Office Hours Only:** Continuously monitor during non-office hours (06:00 PM to 08:00 AM), and ONLY record when motion is detected.

Note: Except 24/7 Continuous Recording, the other schedule recording type can be activated ONLY when image motion detection window is created. Please refer to the users manual for more information.

Select **Yes** to add another camera, or select **No** to continue.



Note: After you have finished adding your camera(s), click **Close** to view your camera(s).



Your D-ViewCam Installation is Complete!

Notes

Notes

Technical Support

D-Link's website contains the latest user documentation and software updates for D-Link products.

U.S. and Canadian customers can contact D-Link Technical Support through our website or by phone.

United States

Telephone

(877) 354-6555

World Wide Web

<http://support.dlink.com>

Canada

Telephone

(877) 354-6560

World Wide Web

<http://support.dlink.com>



Version 1.0
June 01, 2009
6CS3411Q..01G

Copyright ©2009 D-Link Corporation/D-Link Systems, Inc. All rights reserved. D-Link and the D-Link logo are registered trademarks of D-Link Corporation or its subsidiaries in the United States and other countries. Other trademarks are the property of their respective owners. Maximum wireless signal rate derived from IEEE Standard 802.11g and draft 802.11n specifications. Actual data throughput will vary. Network conditions and environmental factors, including volume of network traffic, building materials and construction, and network overhead, lower actual data throughput rate. Environmental factors will adversely affect wireless signal range. Product specifications, size and shape are subject to change without notice, and actual product appearance may differ from that depicted on the packaging. Visit www.dlink.com for more details.