

# MEDIABRIDGE SETUP GUIDE

## THERE ARE THREE OPTIONS TO CHOOSE FROM WHEN SETTING UP YOUR NEW MEDIABRIDGE.

### OPTION 1: REQUIRES A ROUTER THAT SUPPORTS "PUSH BUTTON" WPS™

Many routers today support what's called "Push Button" WPS (Wi-Fi Protected Setup). This option requires your router to have WPS "Push Button" support.

### OPTION 2: REQUIRES MICROSOFT WINDOWS VISTA™

Windows Vista™ includes a simplified process for connecting network devices which uses a PIN code that is provided by the MediaBridge. Setup is done through the Network Settings inside of Windows Vista.

### OPTION 3: STANDARD SETUP FOR ALL OTHER USERS

This is the standard setup for users that do not have routers that support WPS and for users running an operating system other than Windows Vista. Setup is done through a Web interface.

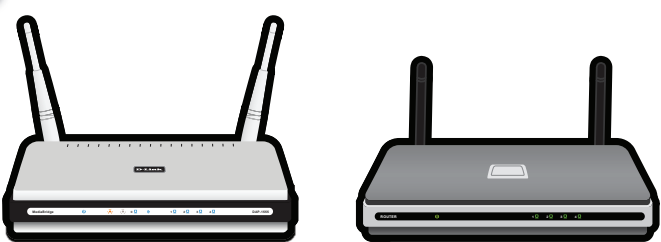
### NOTE:

There is a switch on the back of your MediaBridge labeled **AP / Bridge**. Please refer to the user manual located on the CD to choose which setting is right for you.



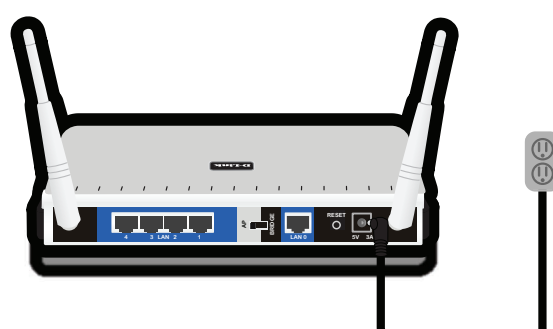
## OPTION 1 - PUSH BUTTON METHOD

1



For setup purposes, place the MediaBridge near your router.

2



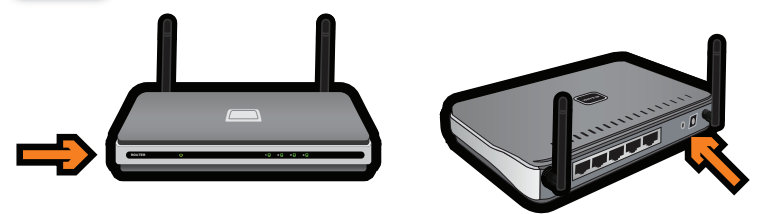
Plug the power adapter into the wall and its output jack into the back of the MediaBridge.

3



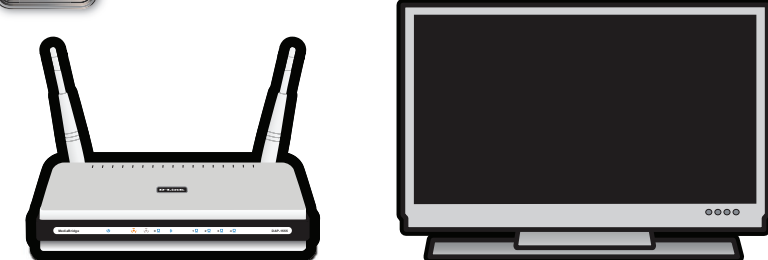
Push the button on the MediaBridge to initiate the secure connection process.

4



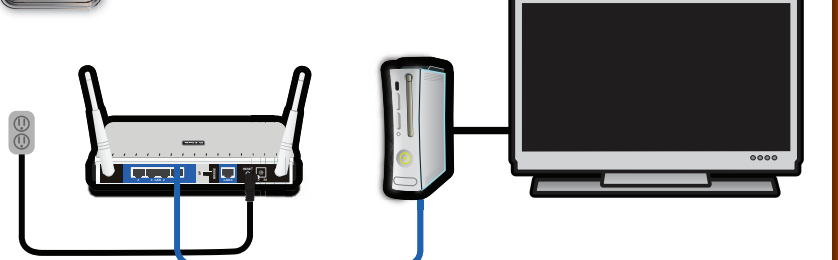
Within 120 seconds press the WPS button on the back or side of your router to link them together.

5



Once the router and the MediaBridge have linked, unplug the MediaBridge and move it to the location you wish to use it.

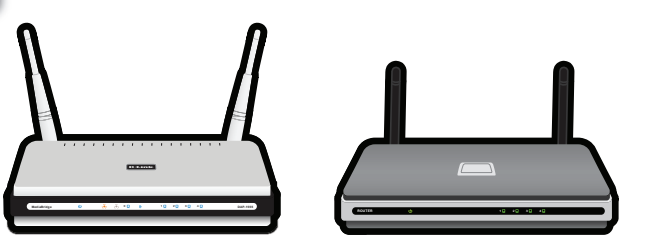
6



Plug the power adapter into the wall and into the back of the MediaBridge. Plug the Ethernet cable into the back of the MediaBridge, then plug the other end into the device you wish to use it with.

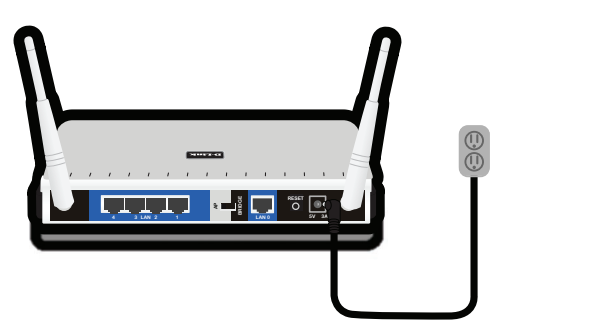
## OPTION 2 - WINDOWS VISTA SETUP

1



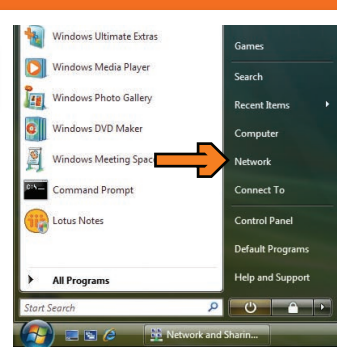
For setup purposes, place the MediaBridge near your router.

2



Plug the power adapter into the wall and then into the back of the MediaBridge. IF USING AP MODE: Plug the Ethernet cable into the MediaBridge and then into the router. IF USING BRIDGE MODE: There is no need to connect the Ethernet cable.

3



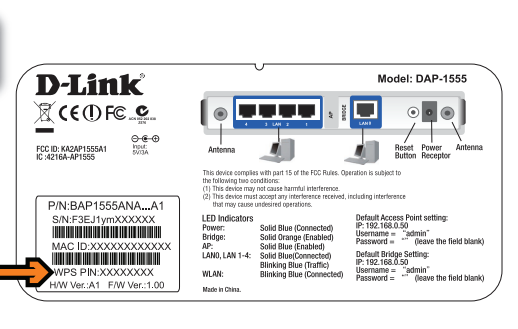
On your PC, open the Windows menu. Click on "Network".

4

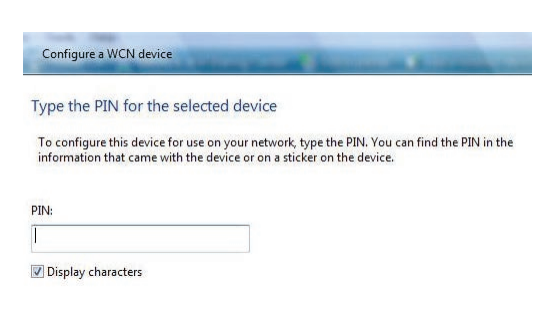


Click on the icon labeled, "Draft 11n AP".

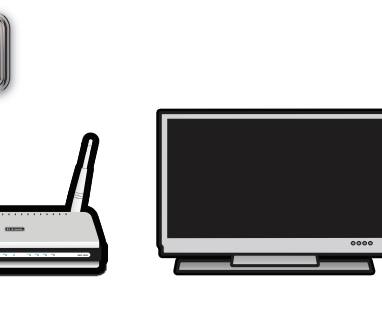
5



You will be prompted to enter a PIN. The PIN is located under your MediaBridge on the label.

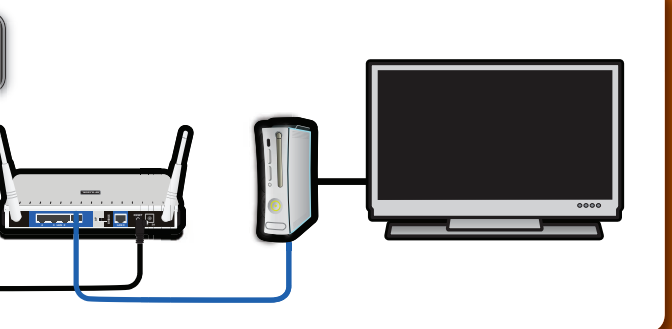


6



Once the MediaBridge is setup, move it to the location you wish to use it.

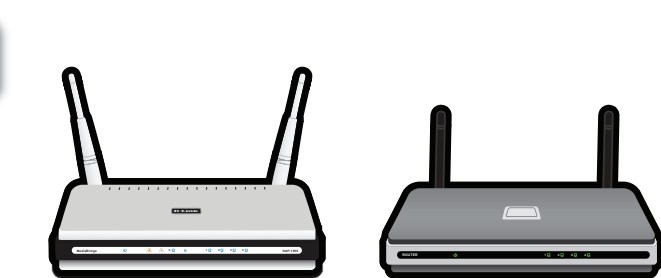
7



Plug the power adapter into the wall and into the back of the MediaBridge. Plug the Ethernet cable into the back of the MediaBridge, then plug the other end into the device you wish to use it with.

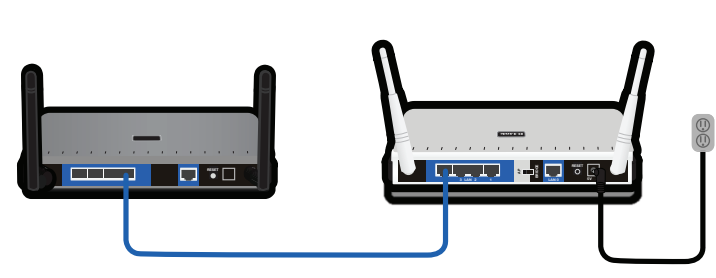
## OPTION 3 - STANDARD SETUP FOR ALL OTHER USERS

1



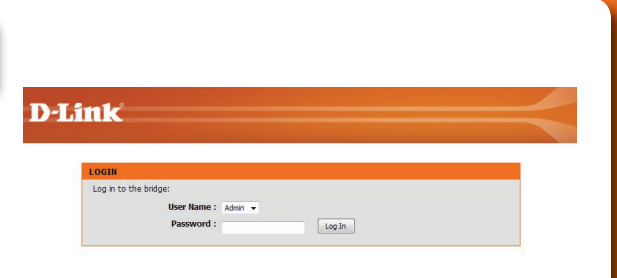
For setup purposes, place the MediaBridge near your router.

2



Plug the power adapter into the wall and its output jack into the back of the MediaBridge. Plug one side of the Ethernet cable to the MediaBridge and the other side to the router.

3



Open a Web browser on your PC and go to: <http://DAP1555> to access the Web interface.

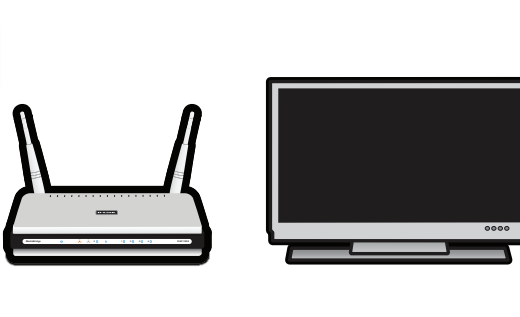
4



Set up the network and security settings to match your network settings. Refer to the manual on the included CD for detailed information on this setup.

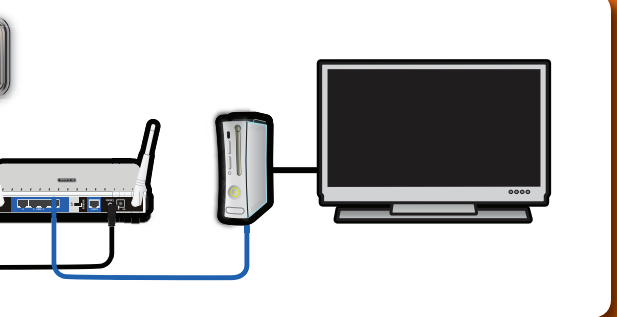


5



Once the MediaBridge is set up, move it to the location you wish to use it.

6



Plug the power adapter into the wall and into the back of the MediaBridge. Plug the Ethernet cable into the back of the MediaBridge, then plug the other end into the device you wish to use it with.