

# QUICK INSTALL GUIDE

DAP-1522

VERSION 1.0



**D-Link®**

**WIRELESS**

---

# Package Contents

- DAP-1522 Xtreme N™ Duo™ Wireless Bridge
- Power Adapter (This unit is to be used only with the power supply provided by the manufacturer.)
- A straight-through Ethernet cable
- CD-ROM (contains software and manual)
- Quick Install Guide

*If any of the above items are missing, please contact your reseller.*

## System requirements

- Computers with Windows®, Macintosh®, or Linux-based operating systems with an installed Ethernet adapter
- Internet Explorer Version 6.0 and above, Mozilla 1.7.12 (5.0), or Firefox 1.5 and above (for configuration)



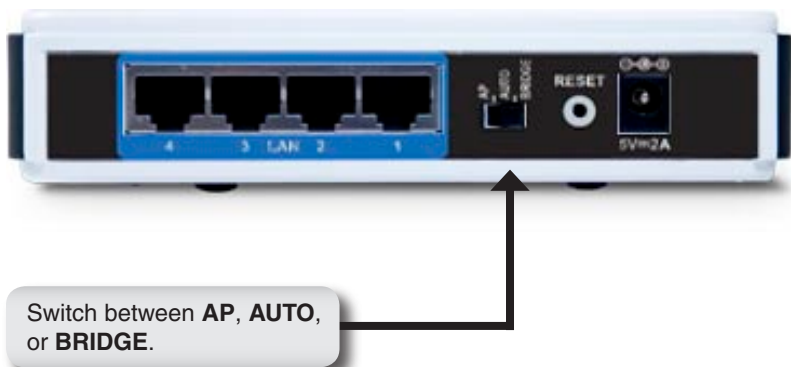
---

## 3-Way Switch

By default, the switch on the back of your DAP-1522 is set to **BRIDGE**. (The physical switch position.)

There are three options to switch to: **BRIDGE**, **AP**, and **AUTO**.

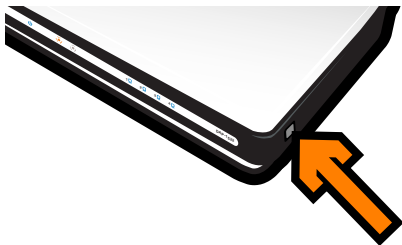
1. If the DAP-1522 is set to **BRIDGE**, it will use static IP 192.168.0.50. The user can open a web browser on the PC and type "**http://DLINKAP**" to access the web interface.
2. If the DAP-1522 is set to **AP**, then the DAP-1522 will be set to Dynamic IP by default. It will fallback to 192.168.0.50 if it doesn't get an IP Address from the DHCP server within 30 seconds. The user can open a web browser on the PC and type "**http://DLINKAP**" to access the web interface.
3. If you set the DAP-1522 switch to **AUTO**, and if a DHCP server is not found, then it will become a bridge. If you set the DAP-1522 switch to **AUTO**, and if there is a DHCP server found, then it will become an AP.



---

## Push Button Setup

1. Insert the AC/DC Power Adapter cord into the power receptacle located on the rear panel of the DAP-1522 and plug the adapter into a suitable nearby power source. (This unit is to be used only with the power supply provided by the manufacturer.)
2. Check the status of the DAP-1522 by checking the LED (orange LED blinks at bridge mode and blue LED blinks at AP mode). Push the button on the right hand side of the DAP-1522 to initiate a secured wireless connection.



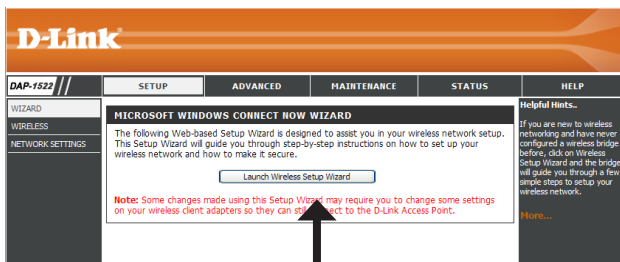
3. Within 120 seconds, push the WPS button on the router to link them together.  
**Note:** To use this method, the router must be WPS ready.
4. Once the WPS button stops blinking, you can move the DAP-1522 to the desired location.
5. Plug the Ethernet cable between the device you wish to use and the DAP-1522, and then power on the DAP-1522.

**Note:** If you are using AP mode, please see the manual for more information on AP mode setup.

---

# Manual Setup

1. Make sure that a wired connection from your PC is made to one of the LAN ports on the DAP-1522.
2. Make sure that the PC has an IP address of 192.168.0.xx and the subnet is 255.255.255.0.
3. Open a web browser on your PC and type “**http://DLINKAP**” to access the web interface.
4. The default username is “**admin**” and the password is blank.
5. Click on **Launch Wireless Setup Wizard**, and follow the steps that appear. Refer to the manual on the included CD for detailed information on this setup.



Click **Launch Wireless Setup Wizard**

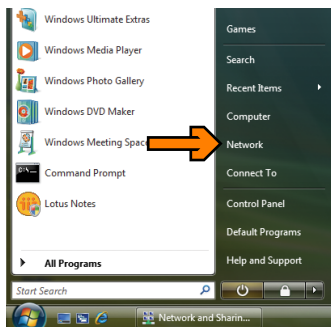
6. Once you have setup the DAP-1522, move it to the location where you wish to use it.
7. Plug the power adapter into the wall and into the back of the DAP-1522. Plug the Ethernet cable between the device you wish to use and the DAP-1522, and then power on the DAP-1522.

# Windows Vista Setup

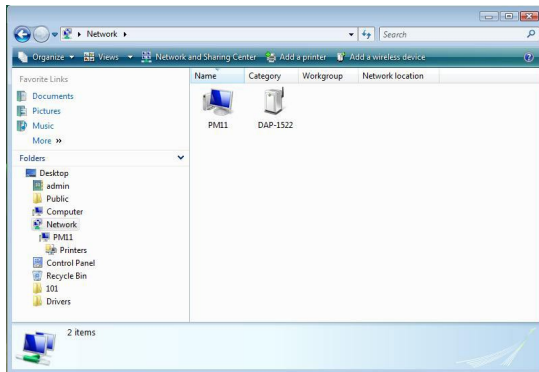
**Note:** If you are using AP mode, please see the manual for more information on AP mode setup.

1. On your PC, open the Windows® menu. Click on “Network”.

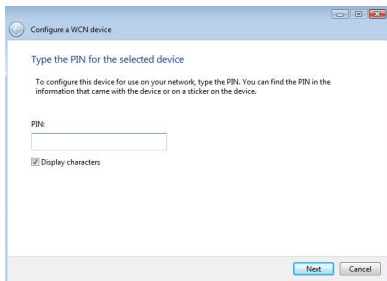
**Note:** Connect the DAP-1522 to the router or PC with an Ethernet cable, and make sure to set up your IP address to 192.168.0.xxx and subnet to 255.255.255.0 on your PC first.



2. Click on the icon labeled “DAP-1522”.



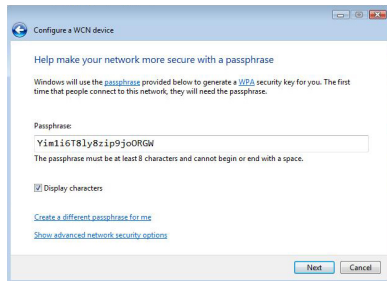
3. You will be prompted to enter a PIN. The PIN is located on a label under your DAP-1522.



4. Provide the network name.



5. Provide the network passphrase.



6. Once the DAP-1522 is setup, move it to the location you wish to use it.
7. Plug the power adapter into the wall and into the back of the DAP-1522. Plug the Ethernet cable between the device you wish to use and the DAP-1522, and then power on the DAP-1522.

---

# Technical Support

D-Link's website contains the latest user documentation and software updates for D-Link products.

U.S. and Canadian customers can contact D-Link Technical Support through our website or by phone.

## United States

### Telephone

(877) 453-5465

### World Wide Web

<http://support.dlink.com>

## Canada

### Telephone

(800) 361-5265

### World Wide Web

<http://support.dlink.com>



Version 1.0

January 17, 2008

Copyright ©2008 D-Link Corporation/D-Link Systems, Inc. All rights reserved. D-Link and the D-Link logo are registered trademarks of D-Link Corporation or its subsidiaries in the United States and other countries. Other trademarks are the property of their respective owners. Maximum wireless signal rate derived from IEEE Standard 802.11g and draft 802.11n specifications. Actual data throughput will vary. Network conditions and environmental factors, including volume of network traffic, building materials and construction, and network overhead, lower actual data throughput rate. Environmental factors will adversely affect wireless signal range. Product specifications, size and shape are subject to change without notice, and actual product appearance may differ from that depicted on the packaging. Visit [www.dlink.com](http://www.dlink.com) for more details.