



The Internet In A Frame

Send the Internet Photo Frame as a gift to your family and loved ones. Then share your latest photos with them through popular photo sharing sites such as Flickr™, Picasa®, Facebook®, FrameChannel™, and more. You can also use the frame to subscribe to RSS feeds. Get the latest news, stock updates, sports scores, weather conditions, and more directly on your frame.



Quick Setup Guide

DSM-210

10" WIRELESS INTERNET PHOTO FRAME

PREPARING FOR INSTALLATION

1 REMOVE CONTENTS FROM THE BOX



D-Link DSM-210
10" Wireless Internet
Photo Frame



Remote Control
(Battery Included)



Stand



Power Supply



CAT5 Ethernet
Cable



Manual, Software,
and Warranty on
CD

2 GETTING STARTED

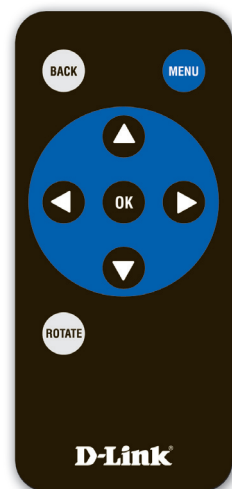
Thank you for purchasing the DSM-210 Wireless Internet Photo Frame.



- 1 - WPS Button
- 2 - Power Button
- 3 - Ethernet Port
- 4 - Power Receptor
- 5 - Reset Button
- 6 - Memory Card Slot
- 7 - USB Port
- 8 - Stand

3 THE REMOTE CONTROL

| BUTTON | FUNCTION |
|-------------------|--|
| Back | Press to return to previous screen. |
| Menu | Press to display a list of options. |
| Arrow Keys | Press to navigate through menu options, slide shows, and pictures. |
| Enter | Press to accept the current selection or option, or press to start/pause in slide show mode. |
| Rotate | Press to rotate the image clockwise 90° each time button is pressed. |



Please remove the plastic tab at the bottom of the remote to activate the battery.

4 ATTACH THE STAND

To place the Internet Photo frame on a shelf or a flat surface, attach the supplied stand.

Align the arrow on the stand with the arrow on the back of the frame (approximately at the 2:00 position).

- To use in horizontal position (as shown), turn the stand counter-clockwise to the H position until the stand locks into place.
- To use in vertical (portrait mode) position, turn the stand clockwise to the V position until the stand locks into place.



WIRELESS SETUP

If you choose to connect to your network using an Ethernet cable, please turn this Quick Start Guide over and follow the instructions beginning with Step 9.

5 POWER ON THE DSM-210

Plug the supplied power adapter into the power receptor on the bottom of the DSM-210. Plug the power cord into a power outlet.



Power on the DSM-210 by pressing the **Power** button.

7 WIRELESS SECURITY

If the wireless network you are connecting to is using wireless security you will be prompted to enter the security passphrase.

Using the arrow keys on the remote control, select each letter or number and press **Enter**. Once the passphrase is complete, select **Enter**.

Note: Allow about a minute for the DSM-210 to connect to your wireless network.

The setup is now complete. Please refer to the **Using Your DSM-210** section on the back of this guide for help with some of the important features.



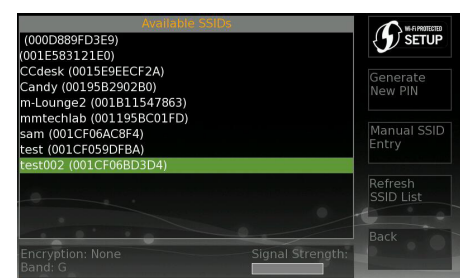
6 CONNECT TO WIRELESS NETWORK

If your router or access point supports WPS, skip to step 8 below.

For the quickest and easiest installation, it is **highly** recommended that both DHCP and SSID Broadcast are enabled on your home network. If not, then you will need to manually enter the network settings and/or the SSID of your wireless network. Please refer to the Manual located on the D-Link CD.

To bring up the list of available wireless networks, use the arrow keys on the remote control and navigate to the **Setup** icon. Select **Wireless Settings** and press **Enter**.

A list of available networks will appear in the left pane. Select your wireless network and press **Enter**.



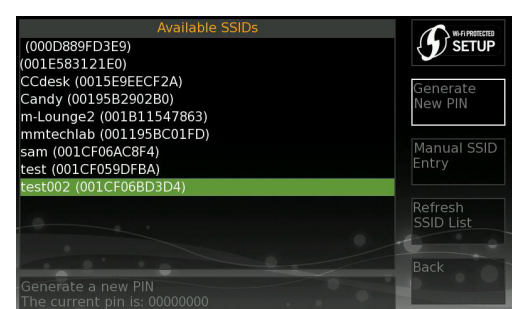
8 WPS (Wi-Fi® PROTECTED SETUP)

If your wireless router or access point supports WPS, you may configure the DSM-210 using the push-button or PIN method.

Push-button Method: Press the WPS button on the top of the frame or select the **Wi-Fi Protected Setup** on-screen button in the upper right corner and press **Enter**. You will need to press the WPS button on your wireless router or access point within 120 seconds. Once configured the DSM-210 will reboot.

PIN Method: You can create a PIN by clicking the **Generate New PIN** on the right side. Enter this PIN into your wireless router or access point.

The setup is now complete. Please refer to the **Using Your DSM-210** section on the back of this guide for help with some of the important features.



WIRED SETUP

9 POWER ON THE DSM-210

Connect the DSM-210 to your router with the supplied Ethernet cable.



Plug the DSM-210 power cord into a power outlet. Power on the DSM-210 by pressing the **Power** button.



USING YOUR DSM-210

INSERT EXTERNAL MEMORY CARD

To view or copy images to the internal memory from a memory card or USB thumb drive, simply insert your USB thumb drive into the USB port and/or insert your memory card into the memory card slot located on the left side of the frame.

The DSM-210 supports the following memory cards:

- Secure Digital (SD)
- Secure Digital High Capacity (SDHC)
- MultiMedia Card (MMC)
- Memory Stick



FRAMECHANNEL

Our featured DSM-210 online site, FrameChannel (<http://dlink.framechannel.com>) is a free service that allows you to add, create and manage online channels for your personalized contents after you have signed up an account online. FrameChannel also allows you to set up your frame to incorporate images from popular photo sharing websites, such as Facebook, Flickr, Picasa, and more. Your frame will automatically update when changes are made to any of your photo sharing sites.

Your DSM-210 can display the instructions to setup a FrameChannel account. On the DSM-210 highlight the **Internet** icon, select **Online Content** and then click on **Instructions**.

For more details, please refer to the manual located on the D-Link CD.



D-LINK WIDGET

D-Link offers a Widget to use with your DSM-210 frame. The D-Link Widget requires Yahoo® Widgets to be installed in your PC. If you already have Yahoo Widgets installed, just load the D-Link widget from the CD included with your DSM-210. If you do not have Yahoo Widgets installed, please click the Yahoo link from the D-Link CD.

To install the D-Link Widget, insert the DSM-210 CD into your computer. When the autorun screen appears, select **Install D-Link Widget**. Once installed, the widget will appear. Click the widget to launch.

To add your picture frame, right-click one of the four available frames and select **Widget Preferences...**



FIRMWARE UPGRADE

Your frame must be connected to the Internet to perform an upgrade. When connected, the DSM-210 will automatically notify you if a firmware upgrade is available. If there is an upgrade available, the **Upgrade Firmware** icon will be displayed. Select the **Upgrade Firmware** icon to update your firmware.



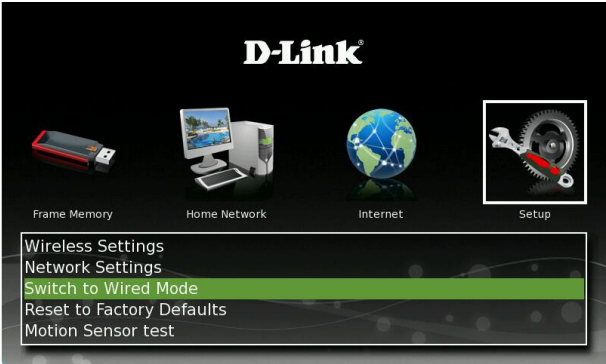
10 SET TO WIRED MODE

By default, the picture frame is set to wireless mode. To connect to your network using an Ethernet cable, you must set the picture frame to wired mode.

Once the DSM-210 is powered on, use the remote control to navigate to the **Setup** icon.

Select **Switch to Wired Mode** and press **Enter**. The picture frame will reboot.

The setup is now complete. Please refer to the **Using Your DSM-210** section below for help with some of the important features.



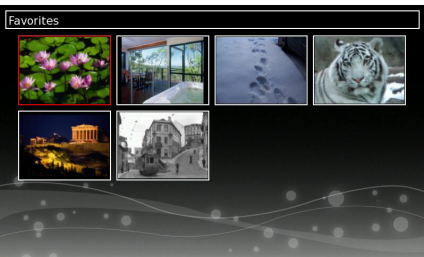
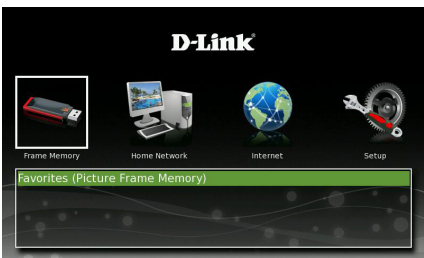
VIEWING PICTURES

To view pictures from the internal memory, USB thumb drive, or memory card, select the **Frame Memory** icon.

Select the location of the images you want to display on your frame and press **Enter**.

Thumbnails of all the available images will appear. Select a picture and press **Enter**. This will start the slideshow and will display all images in the selected folder.

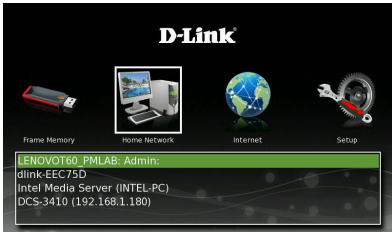
During the slideshow, press **Menu** to set the transition type and scaling type. If you are viewing from a memory card or USB thumb drive, there will be a **Save to Favorites** option. This will copy the image to the internal memory of the DSM-210.



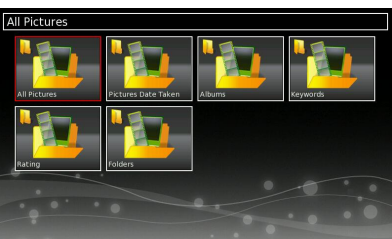
CONNECT TO MEDIA SERVERS

If you have any UPnP-AV servers, such as a PC running Windows Media Player 11* or a Network Attached Storage (NAS) device on your network, you may select the shared photos to be displayed on your DSM-210.

Select the **Home Network** icon and a list of available Media Servers will be listed. Select the server you want to connect to and press **Enter**.



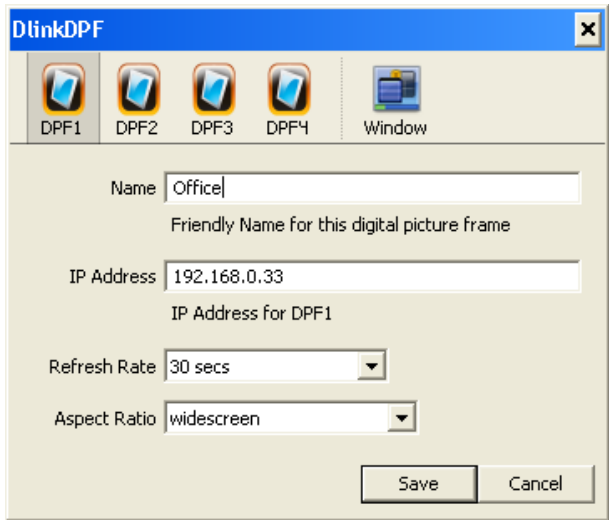
All shared content will appear. Select the pictures you want to display on your DSM-210.



* Please refer to the Manual located on the D-Link CD for help in configuring Windows® Media Player 11 to connect to your DSM-210.

Select one of the available thumbnails (such as DPF1).

1. Enter a name for the frame.
2. Enter the IP Address of the frame (for the IP address of your frame, refer to the Manual - *Network Settings*).
3. Select the refresh rate (**5, 10, 15, 30 seconds** or **1 minute**).
4. Select the Aspect Ratio (**Widescreen** or **Standard**).
5. Click **Save** to save your settings.



You may now add photos from your computer to the DSM-210's internal memory by dragging and dropping the photos into the widget.

SUPPORT

U.S. and Canadian customers can contact D-Link® Technical Support through our website or by phone.

United States
Telephone 877-453-5465
Web <http://support.dlink.com>

Canada
Telephone 800-361-5265
Web <http://support.dlink.com>