



FIREWALL REGISTRATION MANUAL

DFL-210/ 800/1600/ 2500

VER 2.00



NETWORK SECURITY SOLUTION <http://security.dlink.com.tw>



1.Introduction.....	02
2.Apply for a D-Link Membership.....	03
3.D-Link NetDefend IPS Update Service Warranty.....	08
4.Extend your NetDefend Advanced IPS Update Service.....	13

D-Link new NetDefend Firewalls with built-in Intrusion Prevention System (IPS) enables your business stay secure against various network threats from the Internet. To effectively immunize from malicious codes such as network worms, trojans or attacks injuring your business productivity, keeping your NetDefend IPS signature up-to-date is the key to harden your network security.

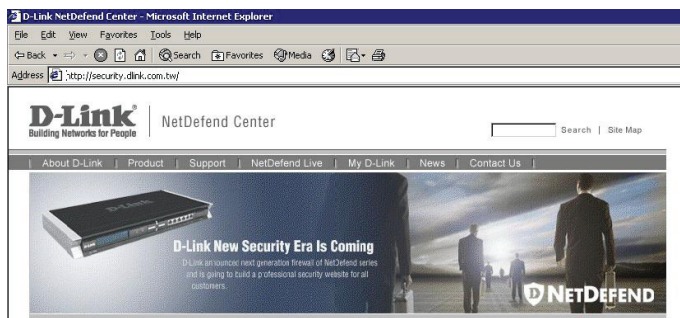
D-Link now delivers the NetDefend IPS Subscription Service for all customers, strengthened by the update-to-date NetDefend IPS signature, your business can always stay with a secure and reliable computing environment. To benefit from NetDefend IPS Subscription Service, first of all you have to register as a D-Link member, using your original product information. After your IPS update service is activated, your NetDefend Firewall will automatically communicate with the update server regularly as needed.

Apply for a D-Link Member

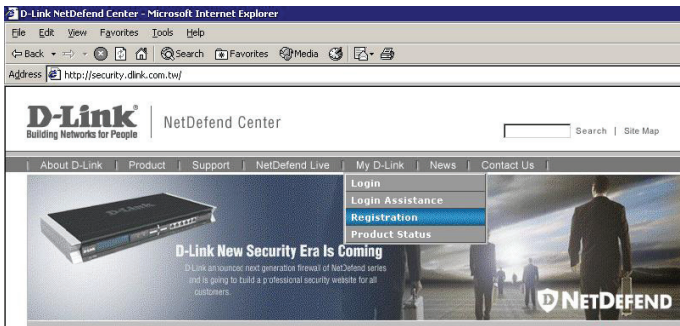
2

You need to visit D-Link NetDefend Security Portal, which provides a registration platform and abundant professional security resources to customers,

1. Please launch your browser and input the following URL:
<http://security.dlink.com.tw>.



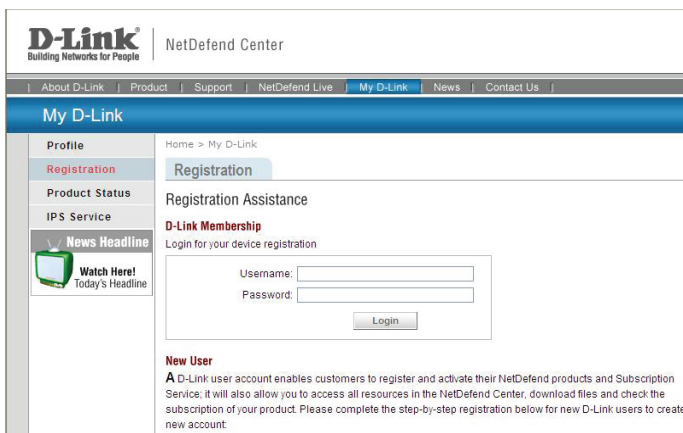
2. Go to “My D-Link” in the menu bar, and click “Registration” from the pull down menu.



3. For security concern, your information provided in “My D-Link” is protected by HTTPS communication, and please click “Yes” to trust the D-Link certificate.



4. If you are already a D-Link member, and you want to register another firewall product, please input your username and password, then logon “My D-Link” directly.



5. If you are new to “My D-Link”, please comprehend the registration information for My D-Link membership by following the steps below:

Step 1: Provide Login Information, User Profile and Company Profile. Please make sure you fill in the correct information for your membership.

New User

A D-Link user account enables customers to register and activate their NetDefend products and Subscription Service; it will also allow you to access all resources in the NetDefend Center, download files and check the subscription of your product. Please complete the step-by-step registration below for new D-Link users to create a new account.

Step 1
Account Creation

Step 2
Product Registration

Step 3
Confirmation

Step 1

Login Information:

*Username:

*Password: (must be between 6 and 24 characters)

*Confirm Password:

User Profile:

*First Name:

*Last Name:

*E-mail:

Phone Number:

Fax Number:

Job Title:

Company Profile:

*Company/Organization:

Employee:

Step 2: Please fill in the MAC address and Serial Number of your appliance. To find the information, you can check the label at the bottom of the appliance.

The screenshot shows the 'My D-Link' website interface. The top navigation bar includes links for 'About D-Link', 'Product', 'Support', 'NetDefend Live', 'My D-Link' (active), 'News', and 'Contact Us'. The left sidebar contains 'Login', 'Login Assistance', 'Registration' (active), 'Product Status', and a 'News Headline' section with a 'Watch Here! Today's Headline' button. The main content area is titled 'Registration' and 'Registration Assistance'. It includes a 'New User' section with a note about creating an account. A progress bar shows 'Step 1 Account Creation' (completed), 'Step 2 Product Registration' (active), and 'Step 3 Confirmation' (pending). Below the progress bar, the 'Product Information' section contains the following fields:

- Device Alias: NetDefend Firewall
- *Purchase Date: 2006-4-1
- *Serial Number: JS23161111111
- *MAC Address: 1233463D96C8
- Distributor VAR: D-Link

At the bottom of the form are 'Back' and 'Next' buttons.

Step 3: Please make sure you provide the correct information before submitting your registration.

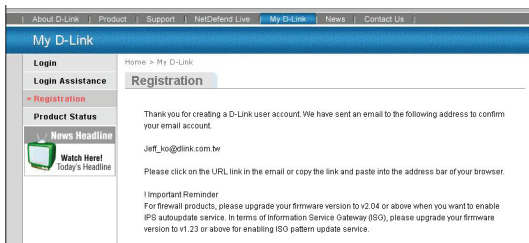
The screenshot shows the 'My D-Link' website interface, specifically the 'Step 3 Confirmation' stage. The left sidebar is identical to the previous screenshot. The main content area is titled 'Registration' and 'Registration Assistance'. The progress bar shows 'Step 1 Account Creation' (completed), 'Step 2 Product Registration' (completed), and 'Step 3 Confirmation' (active). Below the progress bar, the 'User Profile' section contains the following information:

- *First Name: Jeff
- *Last Name: Ko
- *E-mail: jeff_ko@dlink.com.tw
- Phone Number: 886-2-66000123
- Fax Number: 886-2-55509988
- Job Title: Engineer

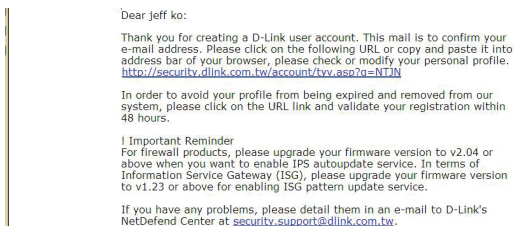
The 'Company Profile' section contains the following information:

- *Company/Organization: D-Link
- Employees: 300+
- *Address: No.289 Sinhu 3rd Ed., Neihs District, Taipei City 114, Taiwan, R.O.C
- *Country: Taiwan
- *City: Taipei
- State/Province: Taipei
- Postal Code: 114

7. After you complete the registration, you will receive an email from D-Link NetDefend Center for membership confirmation.



8. Check your mailbox to see if you received the confirmation email. When you receive the email, please confirm your membership within 48 hours simply by clicking the URL link provided in the mail.



9. After the confirmation, you can check and review your registered Product Status anytime via NetDefend Security Portal.



D-Link NetDefend IPS Update Service Warranty

3

D-Link NetDefend IPS firewalls DFL-210/800/1600/2500 includes integrated Intrusion Prevention System with high performance deep inspection technology and real-time IPS signature update service to protect your enterprise network from exploited application security holes, network worms, and malicious attacks. In order to be effective, the IPS signature database should be kept up to date against a variety of threats from the Internet. Today D-Link provides two types of IPS update service warranty, including the **Basic Maintenance and Advanced IPS update service**, to ensure your IPS signature database is accurate and up-to-date.

D-Link NetDefend Basic IPS Maintenance Service

D-Link will provide the Basic IPS Maintenance service Free for all members registered indefinitely. This service includes IPS signature updates for error correction or signature optimization of the built-in IPS database. The number of IPS signature in the database will stay the same as when the appliance was purchased.

1. Verify your Product Status, you will see the IPS maintenance service Free after your firewall is registered.



My D-Link

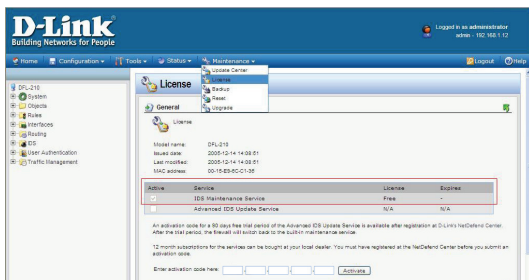
Home > My D-Link > Product Status

Product Status

The following information details your registered product status, please take note of the expiration date of your IPS Service and Product Warranty, if the service or warranty is overdue now, you can contact D-Link to purchase a Subscription Service to extend your product warranty period.

My Firewall	DFL-800
Model Name	DFL-210
Serial Number	B92J15C000099
MAC	0015E96CC136
IPS service	Free Maintenance Service
Registration Date	Aug 02, 2006

2. Login your firewall, point your mouse to “Maintenance” in the tool bar of firewall UI, and click “License” from the pull down menu. Also you will see that your License of IPS Maintenance Service is Free.



D-Link NetDefend Advanced IPS Update Service

D-Link offers an optional Advanced IPS Update Service for customers of NetDefend firewall appliances to purchase further enhancing the security level of your NetDefend Firewall, and all D-Link's NetDefend members can enjoy a 3-month free trial. With the innovative traffic anomalies detection mechanism, your firewall would be protected by immediate IPS signature updates from the D-Link NetDefend Center.

This service is capable of producing an immediate signature of a confirmed exploit within 48 hours, based upon the information available. The IPS signature database is automatically checked at least once a day or more frequent as necessary. Customers can purchase this service from all authorized D-Link NetDefend resellers.

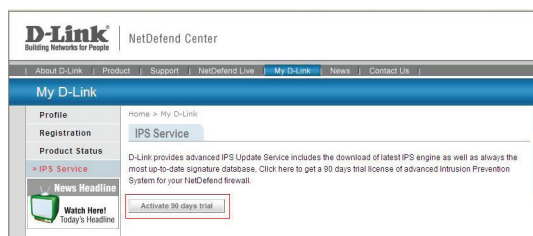
The Advanced IPS update service requires firewall firmware v2.10 or above.

1. Please check your firewall firmware if it is v2.10 or above.

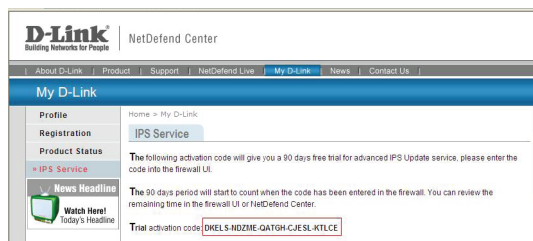


2. Get the trial activation code of Advanced IPS update service on NetDefend Center

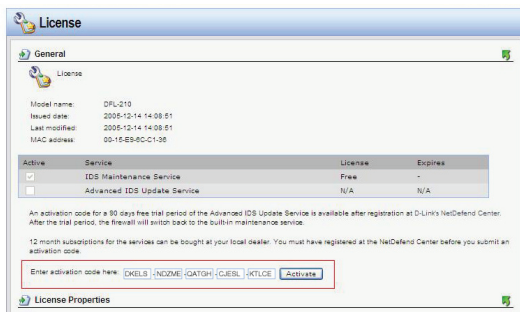
- Click "IPS Service" of My D-Link, and click the "Activate 90 days trial" button



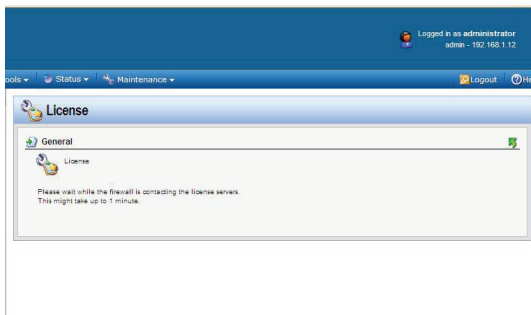
- You will get the trial activation code



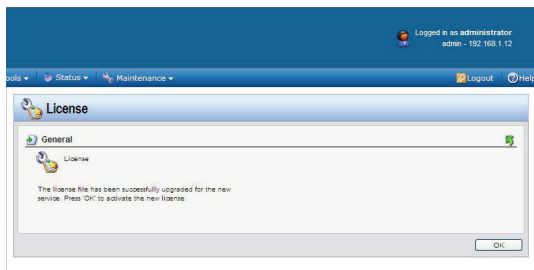
3. Login your firewall, point your mouse to “Maintenance” in the tool bar of firewall UI, and click “License” from the pull down menu. Enter the trial activation code and click the “Activate” button.



4. Firewall is contacting the License Server



5. Activate trial License successfully



6. Trial Advanced IPS update service is enabled



Extend your NetDefend Advanced IPS Update Service

4

1. If your Advanced IPS update service is expired



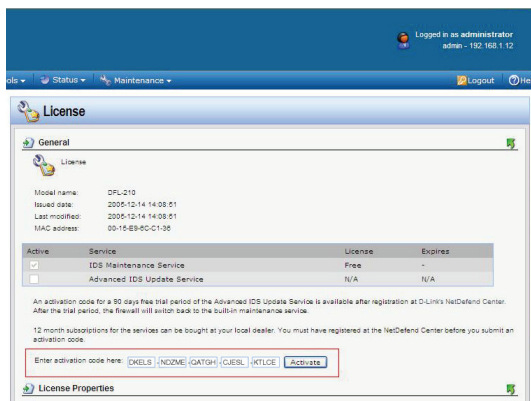
2. You can purchase NetDefend IPS Subscription to extend Advanced IPS Update service from all authorized D-Link NetDefend resellers.



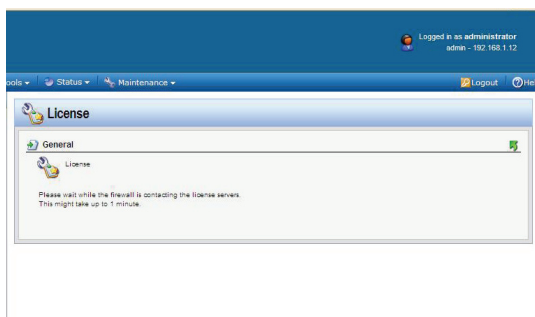
3. After receiving the service package, please find the authentication code on the license card.



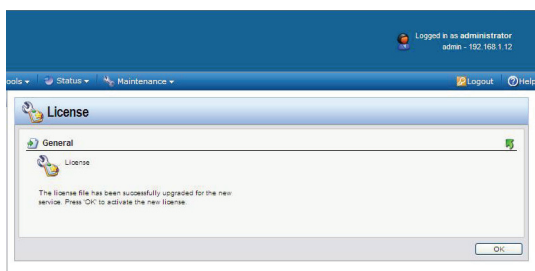
4. Login your firewall, point your mouse to “Maintenance” in the tool bar of firewall UI, and click “License” from the pull down menu. Enter the authentication code and click the “Activate” button



5. Firewall is contacting the License Server



6. Activate Subscription License successfully



7. Advanced IPS update service of NetDefend IPS Subscription is enabled.

License

General

License

Model name: DPL-210
Issued date: 2006-12-14 00:00:00.000
Last modified: 2006-08-03 11:35:59.000
MAC address: 00-15-E9-0C-C1-36

Active	Service	License	Expires
<input checked="" type="checkbox"/>	IDS Maintenance Service	Free	-
<input checked="" type="checkbox"/>	Advanced IDS Update Service	Subscription	2006-08-17

An activation code for a 90 days free trial period of the Advanced IDS Update Service is available after registration at D-Link's NetDefend Center. After the trial period, the firewall will switch back to the built-in maintenance service.

12 month subscriptions for the services can be bought at your local dealer. You must have registered at the NetDefend Center before you submit activation code.

Notes

D-Link®
Building Networks for People



086W023570002