

# D-Link **DI-804V**

Broadband VPN Router

Manual

Rev. 020205

**D-Link®**

Building Networks for People

# Contents

Package Contents .....	3
Introduction .....	4
IP Address Settings and Computer Settings .....	8
Using the Configuration Utility .....	9
Basic Setup .....	10
Device Information.....	18
Device Status .....	19
Advanced Settings.....	20
System Tools .....	29
Configuring Your PCs to Connect to the DI-804V Router .....	34
Contacting Technical Support.....	40
Limited Warranty .....	41
Registrion .....	44

# Package Contents



## Contents of Package:

- D-Link DI-804V Broadband VPN Router
- Manual
- Quick Installation Guide
- Power Adapter - 5V DC, 1.5A\*

*\*Using a power supply with a different voltage rating will damage and void the warranty for this product. If any of the above items are missing, please contact your reseller*

## System Requirements:

Internet Explorer 4.0 or higher or Netscape Navigator 4.0 or higher, with JavaScript enabled

One computer with an installed 10Mbps, 100Mbps or 10/100 Mbps Ethernet adapter

One Modem or ISDN TA (if a dial-up connection is needed)

One RJ-45 DSL/Cable Modem for Internet connection

# Introduction

The D-Link DI-804V Broadband VPN Router enables your network to connect to the Internet via a secure, private connection using a Cable/DSL modem, such as the D-Link DCM-200 Cable Modem. The Virtual Private Network that is created on the Internet between your home and your office (with a VPN server) is secure from interference when you use the DI-804V.

It is an ideal way to connect your computer to a Local Area Network (LAN). After completing the steps outlined in the Quick Install Guide (included in your package) you will have the ability to share information and resources, such as files and printers, and take full advantage of a “connected” environment for work or play!

Connect the WAN port on the DI-804V to the Cable/DSL modem (e.g., the DCM-200) using an Ethernet cable. Your entire LAN can now access the Internet using just one Internet account. The DI-804V has 4 LAN ports. That means that 4 computers can share the benefits of the DI-804V- equipped network.

The DHCP-capable DI-804V will automatically provide unique IP Addresses for all the computers on the network. *(DHCP stands for Dynamic Host Configuration Protocol. It is a protocol for assigning IP Addresses automatically. With a DHCP router like the DI-804V, there is no need to assign static IP Addresses, or purchase multiple addresses from the ISP - Internet Service Provider.)*

Everyone in your home can access the Internet on his or her own computer, at the same time, without any noticeable decrease in speed.

With the serial port, you can connect an analog modem (dial-up modem) as a back up in case of any difficulties that may arise with the Cable or DSL connection.

With Firewall Protection, Hacker attack logging, and Virtual Private Networking, the DI-804V provides a level of security suitable for many businesses.

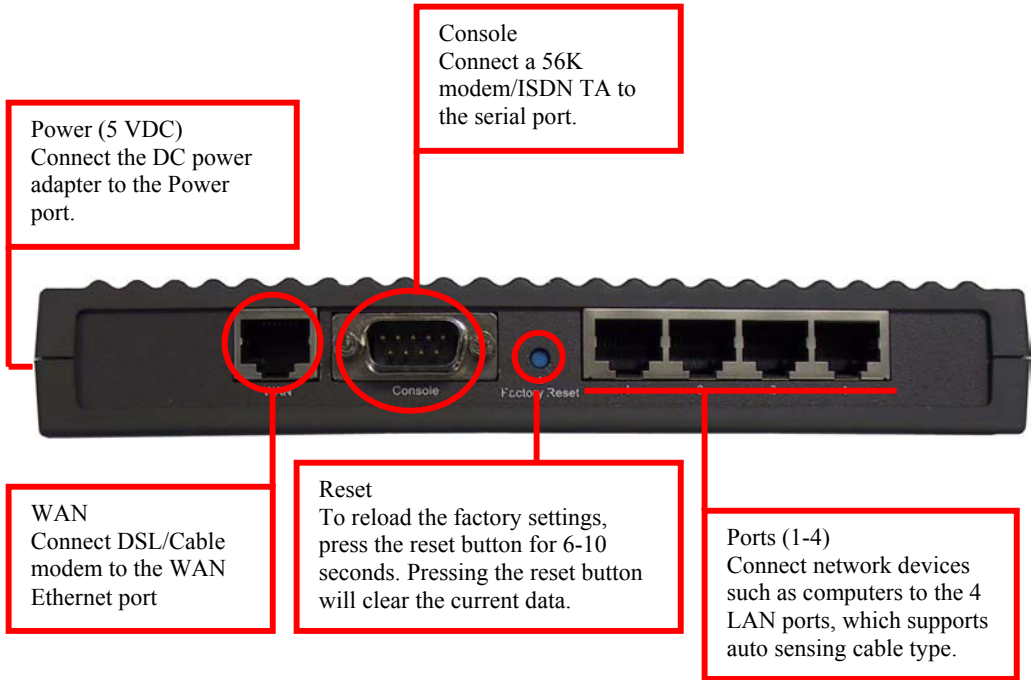
This manual provides a quick introduction to network technology. Please take a moment to read through this manual and get acquainted with your DI-804V.

Front View



LED Indicators

## Rearview



## Product Features

### VPN

Provides Virtual Private Networking when communicating with a VPN server-equipped office, or with another DI-804V-equipped network. Supports PPTP and L2TP pass through function.

### DSL/Cable Modem support

The DI-804V can connect any DSL/Cable Modem to the network.

### DHCP

The DI-804V is a DHCP-capable router. It automatically assigns unique IP Addresses to each network users that is connected to the DI-804V, for the price of one Internet account.

## **Firewall Protection**

Supports general hacker attack pattern monitoring and logging

## **PPPoE Client**

Supports PPPoE client function to connect to the remote PPPoE server.

## **Virtual Server**

Allows the internal server to be accessible from the Internet

## **Upgradeable New Features**

Allows new features to be added in the future

## **High Performance 32 bit RISC CPU Engine**

With the most advanced 32 bit RISC CPU Engine, DI-804V guarantees full compatibility with future DSL/Cable technologies

## **IPSec Security**

(DES, 3DES, MD5, SHA-1)

## **Idle Timer**

Set a specified idle-time before automatically disconnecting

## **Dial-on Demand**

Eliminates the need for Dial-up. Automatically logs in to your ISP

## **Serial port**

May connect to a 56k modem or ISDN TA (should a Cable/DSL connection be unavailable or fail.)

## **Web-Based Configuration**

No software installation required. Can be configured through a web browser making it OS independent

# IP Address Settings and Computer Settings

In order to install the DI-804V you will need to check your computer's settings and the values from your ISP.

The information offered by your ISP:

- Dynamic IP settings
- Your fixed IP address for the gateway
- Your subnet mask for the gateway
- Your default gateway IP address
- Your DNS IP address

If you would like to use PPPoE, you will need the following values from your ISP in order to install your router:

- User Name
- Password

The static IP settings for the PC:

- Your PC's fixed IP address
- Your PC's subnet mask
- Your PC's default gateway
- Your PC's primary DNS IP address

**Note:** The router's default IP address setting is 192.168.0.1.

## Dynamic IP Settings:

The dynamic IP settings for the PC. It is recommended that you leave your IP settings as automatically assigned. By default, the gateway is a DHCP server, and it will give your computer the necessary IP settings.



# Using the Configuration Utility

Launch your web browser and type the device IP address (http:// 192.168.0.1) in the browser's address box. This IP address is the default value of your gateway. Press Enter.

Note: Please make sure that the computer's IP Address is in the same IP Address range as the DI-804V. The IP Address of the DI-804V is 192.168.0.1. All computers on your network must be within that range, for instance, the computer IP Address could be 192.168.0.x. All computers on the network must have the same subnet mask.



The main menu appears showing all the settings available.



# Basic Setup

Basic setup is a step-by-step process that will let you input all the basic settings.



Click **BASIC SETUP**



A username and password screen will appear. Leave the password box empty and type **admin** (the default username) in the username box.

Click **OK**

The Setup Wizard's page will appear.

**Note:** *If you choose to input a password at any time, please remember it. If you should lose the password, you will need to reset the unit. After you reset the DI-804V, all your settings will be lost and will need to be re-input.*

# Time Settings

Please choose your local time zone.

D-Link

VPN Router

DI-804V

DEVICE INFORMATION

DEVICE STATUS

BASIC SETUP

ADVANCED SETTINGS

SYSTEM TOOLS

HELP

Main menu

TIME SETTINGS

DEVICE IP SETTINGS

CABLE/DSL ISP SETTINGS

ISP ADDITIONAL SETTINGS

MODEM SETTINGS

VPN SETTINGS

SAVE & RESTART

TIME ZONE SELECTION

Please choose your local time zone:

(GMT-08:00) Pacific Time (US/Canada), Tijuana

NEXT >

NOTE 1: Please click 'Next' to accept the setting.  
NOTE 2: Please remember to click **Save & Restart** after you have finished the changes to the device settings.

Copyright © 2000

# Device IP Settings

You have to give your VPN Gateway an IP address on your network. This is not the IP address from your ISP but the local internal LAN IP address. The IP address “192.168.0.1” is the default value of your gateway.

Device IP Address:  
The internal LAN IP address of your VPN Gateway.

Device IP Subnet Mask:  
The subnet mask can usually be left as its default entry “255.255.255.0”.

D-Link

VPN Router

DI-804V

DEVICE INFORMATION

DEVICE STATUS

BASIC SETUP

ADVANCED SETTINGS

SYSTEM TOOLS

HELP

Main menu

TIME SETTINGS

DEVICE IP SETTINGS

CABLE/DSL ISP SETTINGS

ISP ADDITIONAL SETTINGS

MODEM SETTINGS

VPN SETTINGS

SAVE & RESTART

DEVICE LAN IP SETTINGS

The device LAN IP address and subnet Mask settings

IP Address: 192 . 168 . 0 . 1

IP Subnet Mask: 255 . 255 . 255 . 0

< BACK NEXT >

NOTE: Please click 'Next' to accept the settings.

Copyright © 2000

# Cable/DSL ISP Settings

To use the xDSL/Cable ISP settings, you must configure the router. ISP use either static or dynamic IP addresses. Check with your ISP if you are not certain which one it uses. If your ISP uses a static IP address, it means that the IP address of your router is always the same. Most ISPs use dynamic IP addresses. They assign you a new IP address every time you connect to the Internet.

If you have a static IP address, do the following:

Enter the IP address that your ISP provided.

Enter the IP subnet mask.

Enter the ISP gateway address.

Enter the DNS IP address.

**D-Link**

VPN Router

DI-804V

DEVICE INFORMATION

DEVICE STATUS

BASIC SETUP

ADVANCED SETTINGS

SYSTEM TOOLS

HELP

Main menu

TIME SETTINGS

DEVICE IP SETTINGS

CABLE/DSL ISP SETTINGS

ISP ADDITIONAL SETTINGS

MODEM SETTINGS

VPN SETTINGS

SAVE & RESTART

CABLE/xDSL ISP SETTINGS

☐ Your ISP Dynamically assigns you the WAN IP Address:

IP assigned by your ISP:

IP Subnet Mask:

ISP Gateway Address:

Domain Name Server (DNS) IP Address:

< BACK

NEXT >

NOTE: Please click 'Next' to accept the settings.

# ISP Additional Settings (PPPoE Settings)

You can configure the router to use additional ISP settings. Some ISPs require PPPoE for authentication purposes.

Do the following to set up PPPoE:

**User name:** Enter the user name of your ISP account.

**Password:** Enter the password of your ISP account.

**Retype password:** Enter the password of your ISP account again to re-confirm.

Some ISPs use Host Name and Domain Name to authenticate the user; if this is the case, you need to enter:

**Host Name:** Enter the name of the gateway.

**Domain Name:** Enter the domain name provided by your ISP

Some ISP require you input the LAN card Mac address; if this is the case, you need to enter:

**Mac Address:** Enter this LAN card Mac address.

**Note:** Some ISPs may recognize your LAN card Mac address as a legal user; in this case, you have to copy the LAN card Mac address in the Mac address field.

For WIN 95/98 you can run winipcfg to see the LAN card Mac address.

For WIN/NT you can run ipconfig/all to see the LAN card Mac address.

D-Link

VPN Router

DI-804V

DEVICE INFORMATION

DEVICE STATUS

BASIC SETUP

ADVANCED SETTINGS

SYSTEM TOOLS

HELP

Main menu

TIME SETTINGS

DEVICE IP SETTINGS

CABLE/DSL ISP SETTINGS

ISP ADDITIONAL SETTINGS

MODEM SETTINGS

VPN SETTINGS

SAVE & RESTART

ISP ADDITIONAL SETTINGS

☐ Your ISP requires you to input the username/password (PPPoE Settings)

User Name:

Password:

Retype Password:

Idle Time:

no idle timeout

☐ Your ISP requires you to input the Host Computer Name

Host Name:

VP204

☐ Your ISP requires you to input the WAN Ethernet Mac

00

12

21

45

78

53

< BACK

NEXT >

# Modem Settings

The modem dialup can be used as a backup for the xDSL/Cable connection. If you would like to use the modem dialup or VPN features you must enable the modem settings. Click on the Advanced Settings tab and enter the ISP account information.

**Note:** If you would like to change the baud rate settings, please click on the “ADVANCED SETTINGS”. Then click on the MODEM SETTINGS button.

D-Link

VPN Router

DI-804V

DEVICE INFORMATION

DEVICE STATUS

BASIC SETUP

ADVANCED SETTINGS

SYSTEM TOOLS

HELP

Main menu

TIME SETTINGS

DEVICE IP SETTINGS

CABLE/DSL ISP SETTINGS

ISP ADDITIONAL SETTINGS

MODEM SETTING

VPN SETTINGS

SAVE & RESTART

MODEM SETTINGS

☐ Backup dial-up modem when the broadband connection is not working

ISP Phone Number:

User Name:

Password:

Retype Password:

Idle Time:

30 minutes

< BACK

NEXT >

NOTE 1: Please click 'Next' to accept the settings.

NOTE 2: Most dial-up modems are compatible with the standard modem strings. For modems that require special modem strings, please enter the information in Modem String Settings under Advanced Settings.

Copyright © 2000

**Note:** When your Cable/DSL connection comes back on-line, you will need to return to this page and uncheck the backup dial-up modem setting in order to use your Cable/DSL Broadband connection again.

# VPN Settings

Use this screen to enable the IPSec feature. This feature allows a secure connection between two parties. The connection is made over the Internet. To enable the VPN function, check the Enable VPN checkbox and enter a string into the connection name field, then click the “ADD” button.

D-Link

Main menu

TIME SETTINGS

DEVICE IP SETTINGS

CABLE/DSL ISP SETTINGS

ISP ADDITIONAL SETTINGS

MODEM SETTINGS

VPN SETTINGS

SAVE & RESTART

VPN Router

DI-804V

DEVICE INFORMATION

DEVICE STATUS

BASIC SETUP

ADVANCED SETTINGS

SYSTEM TOOLS

HELP

VPN SETTINGS

Connection Name

ADD

Enable	Connection Name	Local IPSEC ID	Remote IPSEC ID	Command
<input type="checkbox"/>	11	Local	Remote	<div>Edit</div> <div>Del</div>

< BACK

NEXT >

Copyright © 2000

## Enabled NetBIOS Broadcast

Computers running Microsoft Windows can communicate with one another using NetBIOS. Users can access remote network resources by browsing the Window Network Neighborhood. You can uncheck the Enabled NetBIOS Broadcast checkbox. The Secure Association (SA) can be created using IKE (auto-mode) or Manual Mode. The default value is Internet Key Exchange (IKE). If you would like to use Manual Key, check the Manual radio box and required input fields will be shown.

Secure Association	<input type="radio"/> IKE <input checked="" type="radio"/> Manual
Incoming SPI	<input type="text" value="3000"/>
Outgoing SPI	<input type="text" value="3000"/>
Encryption Protocol	<input type="text" value="DES"/> ▼
Encryption Key	<input type="text" value="123456"/>
Authentication Protocol	<input type="text" value="MD5"/> ▼
Authentication Key	<input type="text" value="abcdef"/>

SAVE

### Incoming SPI

Enter the Incoming SPI that the remote VPN Gateway will use to identify this SA.

### Outgoing SPI

Enter the Outgoing SPI that the local VPN Gateway will use identify this SA

### Encryption Protocol

VPN Internet Gateway supports three encryption algorithms (Null, DES, or 3DES); user can select an appropriate encryption algorithm.

### Encryption Key

This string is used as a key to encrypt and decrypt the data transmitted.

### Authentication Protocol

VPN Internet Gateway supports two authentication algorithms (MD5 or SHA-1); user can select an appropriate authentication algorithm.

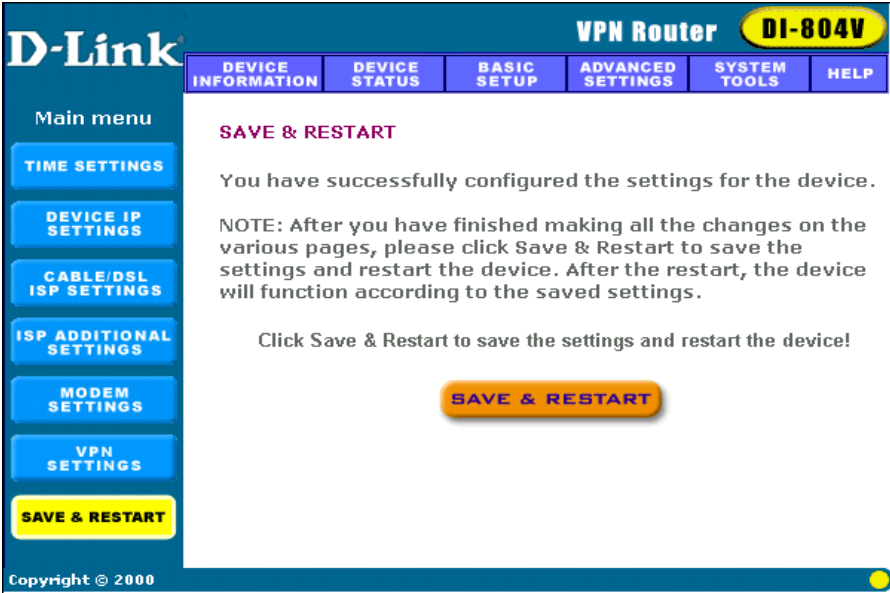
### Authentication Key

This string is used as key authentication.

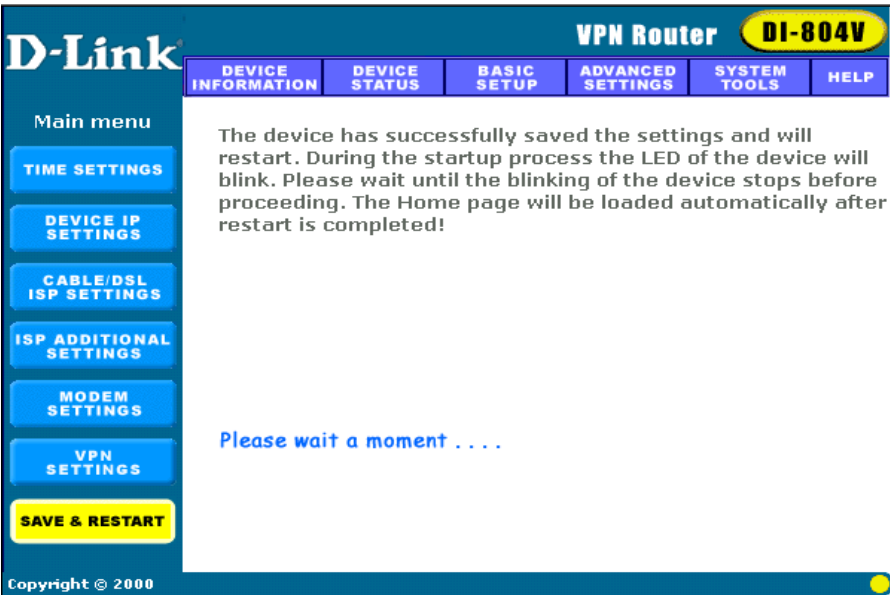


# Save & Restart

After you have finished making all the changes on the various pages, please click Save & Restart to save the settings and restart the device. After the restart, the device will function according to the saved settings.

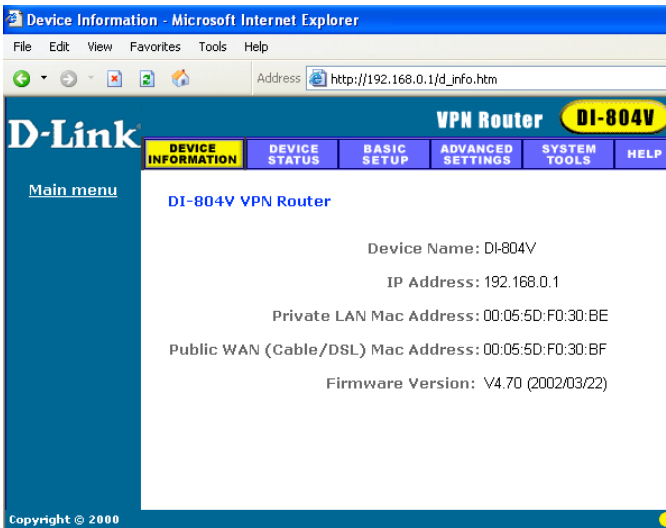


During the startup process the LED of the device will blink. Please wait until the blinking of the device stops before proceeding.



# Device Information

**Device information** displays the current settings of the VPN Internet Gateway.



## Device Name

This is the host name of the VPN Internet Gateway.

## IP Address

This is the IP address of the VPN Internet Gateway.

## Private LAN Mac Address

This is the Mac address of the VPN Internet Gateway LAN port.

## Public WAN (xDSL/Cable) Mac Address

This is the Mac Address of the VPN Internet Gateway WAN Ethernet port.

## Firmware version

Displays the Firmware Version of the DI-804V and its release date

# Device Status

**Device status** displays the current connection status of the VPN Gateway.



## Modem Dialup

The modem can be used as a dialup backup for the xDSL/Cable connection. If modem dialup is connected, it will show “**Modem: Active**,” otherwise it will show “**Not Active**”.

## Device IP

Shows the Device IP address, private LAN Mac address and public WAN Mac address of the VPN Internet Gateway.

## Release and Renew

Click **Release** button, the VPN Internet Gateway will disconnect with the xDSL/Cable modem.

Click the **Renew** button, the VPN Internet Gateway will connect with the xDSL/Cable modem again.

## DHCP Log

Click **DHCP Log** button, the screen will display the current DHCP client information.

## VPN Status

Click **VPN Status** button, the screen will display the current VPN connection information.

# Advanced Settings

**Advanced settings** include DHCP server, virtual server static routing, dynamic routing, filter settings, modem string settings and administration settings.

A username and password will appear. Type “**admin**” in the user name box, and type the password that you have set the device (the default is no password)

Click **OK**

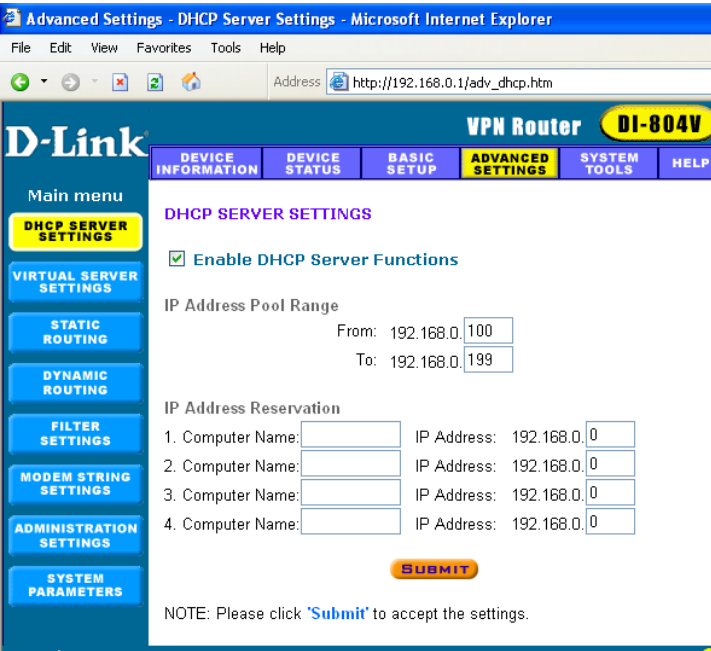
The Advanced Settings page will appear.



A login dialog box titled "Connect to 192.168.0.1" with a key icon. It contains a "Login as admin" section with a "User name:" field set to "admin" and a "Password:" field. There is a checkbox for "Remember my password" which is unchecked. At the bottom are "OK" and "Cancel" buttons.

## DHCP Server Settings

The VPN Internet Gateway’s DHCP server is enabled by default. If you would like to disable the DHCP server, unclick on the square circle below.



A screenshot of the D-Link VPN Router DI-804V Advanced Settings page, specifically the DHCP Server Settings. The browser title is "Advanced Settings - DHCP Server Settings - Microsoft Internet Explorer". The address bar shows "http://192.168.0.1/adv\_dhcp.htm". The page has a blue header with the D-Link logo and a navigation menu with tabs: DEVICE INFORMATION, DEVICE STATUS, BASIC SETUP, ADVANCED SETTINGS (highlighted), SYSTEM TOOLS, and HELP. On the left is a "Main menu" with buttons for DHCP SERVER SETTINGS (highlighted), VIRTUAL SERVER SETTINGS, STATIC ROUTING, DYNAMIC ROUTING, FILTER SETTINGS, MODEM STRING SETTINGS, ADMINISTRATION SETTINGS, and SYSTEM PARAMETERS. The main content area is titled "DHCP SERVER SETTINGS" and includes a checkbox for "Enable DHCP Server Functions" which is checked. Below this is the "IP Address Pool Range" section with "From: 192.168.0.100" and "To: 192.168.0.199". There is also an "IP Address Reservation" section with four rows, each containing a "Computer Name" field and an "IP Address" field (all set to 192.168.0.0). A yellow "SUBMIT" button is at the bottom. A note at the bottom says "NOTE: Please click 'Submit' to accept the settings." The footer shows "Copyright © 2000".

## IP Address Pool Range

The IP address pool contains the range of the IP address that will automatically be assigned to the clients of your network.

Default setting is from **192.168.0.100** to **192.168.0.199**.

## IP Address Reservation

You can use IP address reservation option to give particular computers on your network the same static IP address every time the computer is turned on.

## Virtual Server Settings

**Virtual server settings** allow clients on the Internet to access your LAN via the Internet. You can use the IP mapping function to access an FTP server or Telnet server etc. remotely through Internet.

**DMZ** function can be applied to a single client behind the VPN Gateway to expose it to the Internet and ensure complete Internet application compatibility even if specific ports are not known. If you would like to enable DMZ function, enter an IP address into the DMZ IP field. The value of '0' means that the DMZ function is disabled.

D-Link

VPN Router

DI-804V

DEVICE INFORMATION

DEVICE STATUS

BASIC SETUP

ADVANCED SETTINGS

SYSTEM TOOLS

HELP

Main menu

DHCP SERVER SETTINGS

VIRTUAL SERVER SETTINGS

STATIC ROUTING

DYNAMIC ROUTING

FILTER SETTINGS

MODEM STRING SETTINGS

ADMINISTRATION SETTINGS

SYSTEM PARAMETERS

VIRTUAL SERVER SETTINGS

DMZ 192.168.0.

Internal IP

Service Port Range

01. 192.168.0.

0

~

0

02. 192.168.0.

0

~

0

03. 192.168.0.

0

~

0

04. 192.168.0.

0

~

0

05. 192.168.0.

0

~

0

06. 192.168.0.

0

~

0

07. 192.168.0.

0

~

0

08. 192.168.0.

0

~

0

09. 192.168.0.

0

~

0

10. 192.168.0.

0

~

0

11. 192.168.0.

0

~

0

12. 192.168.0.

0

~

0

13. 192.168.0.

0

~

0

14. 192.168.0.

0

~

0

15. 192.168.0.

0

~

0

16. 192.168.0.

0

~

0

FTP 20,21

NetMeeting 1720

SMTP 25

DNS 53

TFTP 69

HTTP 80

POP3 110

News 144

SNMP 161

SNMP-trap 162

SUBMIT

NOTE: Please click 'Submit' to enter inputted data.

# Static Routing

**Static routing settings** allow the VPN Internet Gateway to route IP packets to another network. The routing table stores the routing information so that your network device knows where to redirect the IP packets to the proper network.

## Destination IP Address

The destination IP is the address of the remote network to which you want to assign a static route.

## Subnet Mask

The subnet mask of your network IP address.

## Gateway IP Address

The IP address of the interface used to link to the remote network.

# Dynamic Routing

**Dynamic Routing Settings** allow the VPN Internet Gateway to route IP packets to another network automatically. The RIP protocol is applied, and broadcasts the routing information to other routers on the network regularly.

D-Link

VPN Router

DI-804V

DEVICE INFORMATION

DEVICE STATUS

BASIC SETUP

ADVANCED SETTINGS

SYSTEM TOOLS

HELP

Main menu

DHCP SERVER SETTINGS

VIRTUAL SERVER SETTINGS

STATIC ROUTING

DYNAMIC ROUTING

FILTER SETTINGS

MODEM STRING SETTINGS

ADMINISTRATION SETTINGS

SYSTEM PARAMETERS

DYNAMIC SETTINGS

SEND

☒ Disabled☐ RIP1☐ RIP1 Compatible☐ RIP2

RECEIVE

☒ Disable☐ RIP1 Only☐ RIP2 Only☐ Both RIP1/2

SUBMIT

NOTE: Please click 'Submit' to accept the settings.

**For the SEND option** choosing the proper protocol by which you transmit the data on the network.

**For the RECEIVE option** choosing the proper protocol by which the VPN Internet Gateway receive the data on the network.

## Filter Settings – LAN Filter Settings

LAN Filter Settings allow administrator to define whether local user has the permission to access Internet. To activate this feature, check LAN Side Filter Enabled. Then, you can define the filtering policy by entering an IP address range, network port number and select the protocol(s).

D-Link

VPN Router

DI-804V

DEVICE INFORMATION

DEVICE STATUS

BASIC SETUP

ADVANCED SETTINGS

SYSTEM TOOLS

HELP

Back

LAN FILTER SETTINGS

WAN FILTER SETTINGS

☐ LAN Side Filter Enabled

Default LAN Side Filter ☒ Block ☐ Pass

Filter Entry

☒ Block ☐ Pass

Protocols: All

IP Address Range

From: . . .

To: . . .

Destination Port Range: ~

ADD

LAN Side Filter Table:

Del	Type	Protocol	From	To	Port Range
-----	------	----------	------	----	------------

SUBMIT

NOTE: Please click 'Submit' to enter inputted data.

For example, to prevent the local user of IP address range (from 192.168.0.100 to 192.168.0.200) to access port 80 (HTTP), the settings are as follows,

- LAN Side Filter Enabled: Enabled
- Default LAN Side Filter: Pass
- Filter: Block
- Protocol: TCP
- IP Address Range: 101 ~ 200
- Destination Port Range: 80 ~ 80 (HTTP)

# Filter Settings – WAN Filter Settings

**WAN Filter Settings** allow administrator to define whether remote/outside user has the permission to access the local network. To activate this feature, check **WAN Side Filter Enabled**. Then, you can define the filtering policy by entering IP address range, the port range and select the protocol(s).

D-Link

VPN Router

DI-804V

DEVICE INFORMATION

DEVICE STATUS

BASIC SETUP

ADVANCED SETTINGS

SYSTEM TOOLS

HELP

Back

LAN FILTER SETTINGS

WAN FILTER SETTINGS

☐ WAN Side Filter Enabled

Default WAN Side Filter ☒ Block ☐ Pass

Filter Entry

☒ Block ☐ Pass

Protocols: All

IP Address Range

From: . . .

To: . . .

Destination Port Range: ~

ADD

WAN Side Filter Table:

Del	Type	Protocol	From	To	Port Range
-----	------	----------	------	----	------------

SUBMIT

NOTE: Please click 'Submit' to enter inputted data.

For example, to prevent the remote user of IP address range (211.21.0.1 to 211.29.0.1) to access virtual WEB server (port 80), the setting are as follows,

- WAN Side Filter Enabled: Enabled
- Default WAN Side Filter: Pass
- Filter: Block
- Protocol: TCP
- IP Address Range: 211.21.0.1 to 211.29.0.1
- Destination Port Range: 80 ~ 80 (HTTP)

## Modem String Settings



Modem string settings allow user to input detail settings for the analog modem. If you would like to change the baud rate settings, please check the initial string. (You can refer to the manual for your modem.)

D-Link

VPN Router

DI-804V

DEVICE INFORMATION

DEVICE STATUS

BASIC SETUP

ADVANCED SETTINGS

SYSTEM TOOLS

HELP

Main menu

DHCP SERVER SETTINGS

VIRTUAL SERVER SETTINGS

STATIC ROUTING

DYNAMIC ROUTING

FILTER SETTINGS

MODEM STRING SETTINGS

ADMINISTRATION SETTINGS

SYSTEM PARAMETERS

MODEM SETTINGS

Baudrate Settings : 115200bps(28.8K/33.6K/56K modem or ISDN TA)

Pre-Initial String: AT

Initial String: AT S0=1

Dialup String: ATDT

SUBMIT

NOTE: Please click 'Submit' to accept the settings.

Copyright © 2000

## Administration Settings

### PASSWORD SETTINGS

You can give your VPN Gateway a new password. This password will be required the next time you configure your VPN Gateway. To enter a password, type your password in the new password field and type it again in the retype password field.

**Note:** it is important to remember your password. If for any reason you lose or forget your password, press the small reset button located on the back of the device for 5 to 6 seconds. Reset action will re-initialize the settings. All configurations, including password, will be reset and require re-entering.

**D-Link** **VPN Router** **DI-804V**

DEVICE INFORMATION | DEVICE STATUS | BASIC SETUP | **ADVANCED SETTINGS** | SYSTEM TOOLS | HELP

Main menu  
 DHCP SERVER SETTINGS  
 VIRTUAL SERVER SETTINGS  
 STATIC ROUTING  
 DYNAMIC ROUTING  
 FILTER SETTINGS  
 MODEM STRING SETTINGS  
**ADMINISTRATION SETTINGS**  
 SYSTEM PARAMETERS

### PASSWORD SETTINGS

The new password will be used to authenticate the user when configuring the device.

New Password:

Retype Password:

### SYSTEM ADMINISTRATION

HTTP Port No:

☒ Allow remote user to configure the device using HTTP

☐ Only the following remote hosts are allowed

IP Address1:

IP Address2:

IP Address3:

IP Address4:

IP Address5:

☒ Any remote hosts are allowed

☒ Allow remote user to ping the device

### SYSTEM Log

☐ Enable System Log Function

Log server IP address

**SUBMIT**

NOTE 1: Please click "Submit" to enter inputted data.  
 NOTE 2: This function will enable the system log daemon to log all the system information to the system log server.

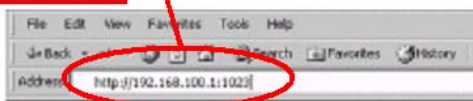
Copyright © 2000

## SYSTEM ADMINISTRATION

Here, remote users can be set up to configure and administrate the VPN Internet Gateway through Internet. The default value of HTTP port is 80. The default IP address of remote administration host is: 0.0.0.0. (IP address of 0.0.0.0 means that any PC on the network can remote access and manage the VPN Internet Gateway).

If you use this function, you have to enable the feature “Allow remote user to configure the device” first. Once you have enabled this function, type the VPN Internet Gateway WAN IP address (`http://192.168.100.1:1023`) into the browser of any or specific PC

`http://<WAN IP Address>: <Port No>`



***Note:** Once HTTP port no (**NOT PORT 80**) is changed and the users of the LAN terminal want to configure the VPN Internet Gateway, the users have to type the VPN Internet Gateway LAN IP address with port number (<http://192.168.0.1:1023>).*

## System Parameters

System Parameters allows user to setup the MTU value (Maximum Transmission Unit). The default MTU value is 1500 Bytes. User can setup a proper MTU for your network device.

For some areas, the ISPs set the limit packet size for PPPoE connection. User has to change MTU setting for surfing the net.

D-Link

VPN Router

DI-804V

DEVICE INFORMATION

DEVICE STATUS

BASIC SETUP

ADVANCED SETTINGS

SYSTEM TOOLS

HELP

Main menu

DHCP SERVER SETTINGS

VIRTUAL SERVER SETTINGS

STATIC ROUTING

DYNAMIC ROUTING

FILTER SETTINGS

MODEM STRING SETTINGS

ADMINISTRATION SETTINGS

SYSTEM PARAMETERS

SYSTEM PARAMETERS

MTU Setting

SUBMIT

NOTE: Please click 'Submit' to accept the settings.

Copyright © 2000

# Save & Restart

If you have finished making all the changes on the various pages, please click Save & Restart to save the settings and restart the device. If you would like to configure the setting again, you can browse those functions then click them. After the restart, the device will function according to the saved settings.

**Save & Restart** lets you save the input settings to the VPN Internet Gateway (so as to be retrieved at a later time) and then restart it.

VPN Router **DI-804V**

DEVICE INFORMATION

DEVICE STATUS

BASIC SETUP

ADVANCED SETTINGS

SYSTEM TOOLS

HELP

You have successfully submitted the settings to the device!

**DHCP Server Settings**  
You can configure the device to function as a DHCP server for the workstations on the LAN.

**Virtual Server Settings**  
You can configure your private LAN servers to be accessible from Internet.

**Static Routing Settings**  
Static routing

**Dynamic Routing**  
Dynamic RIP 1/RIP2 routing settings are set here

**Filter Settings**  
LAN Side Filter and WAN Side Filter Settings

**Modem String Settings**  
Modem string and baudrate settings are entered here

**Administration Settings**  
Password Settings and Remote Administration

**System Parameters**  
MTU for PPPoE and Static/Dynamic

Start to save the submitted settings and restart it **Save & Restart**

NOTE 1: Please continue the advanced setup by clicking the options.  
NOTE 2: Once you have submitted all the necessary settings, please click the **SAVE & RESTART** button to save the changes to the device.  
New settings will take effect after the device has been restarted.

Copyright © 2000

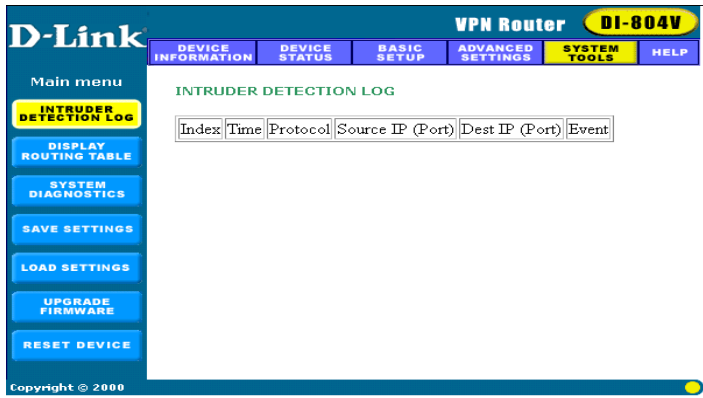
# System Tools

## System Tools

Detects the status of the VPN Internet Gateway.

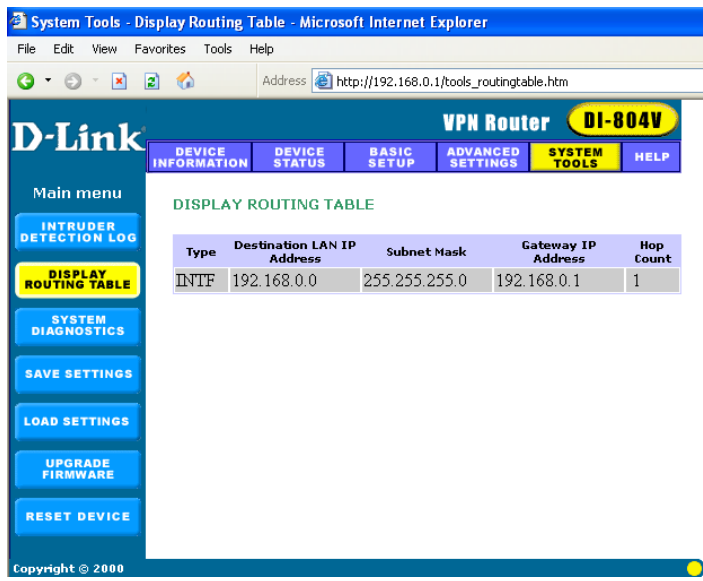
## Intruder Detection Log

The event messages show the possible hacker attacks that have occurred on your VPN Gateway. Up to 32 hacker attacks may be logged in this manner.



## Display Routing Table

The Display Routing Table shows the current static routing configuration.



# System Diagnostics

System diagnostics shows your VPN Gateway’s information. It will perform a check-up on your VPN Gateway to make sure that everything is functioning properly.

**D-Link**

VPN Router

DI-804V

DEVICE INFORMATION

DEVICE STATUS

BASIC SETUP

ADVANCED SETTINGS

**SYSTEM TOOLS**

HELP

Main menu

INTRUDER DETECTION LOG

DISPLAY ROUTING TABLE

**SYSTEM DIAGNOSTICS**

SAVE SETTINGS

LOAD SETTINGS

UPGRADE FIRMWARE

RESET DEVICE

**SYSTEM DIAGNOSIS**

**Configuration**

Firmware Version: V4.70

**ISP Settings**

IP assigned method: Assigned by ISP DHCP server

IP address: 0.0.0.0

Gateway IP address: 0.0.0.0

DNS Server IP address: 0.0.0.0

Host Name: DI-804V

PPPoE Enable : No

PPPoE Username:

**Modem Settings**

Telephone Number:

Dial-up User Name:

Idle Timeout: 30 minutes

Pre Initial String: AT

Initial String: AT S0=1

Dialup String: ATDT

**Device Settings**

Device IP address as: 192.168.0.1

Device Network Mask: 255.255.255.0

DHCP Server: Enabled

Pool from: 192.168.0.100

Pool to: 192.168.0.199

**Diagnosis**

**ISP Status**

Cable / xDSL IP address:0.0.0.0

DNS IP address: 0.0.0.0

Modem (async) IP address: 0.0.0.0

**Link Status**

Cable/xDSL	Disconnected
LAN	Connected
Modem	Modem is Not Ready

**Current WAN connection**

Cable/xDSL                      Not Connected

**LAN MAC Table**

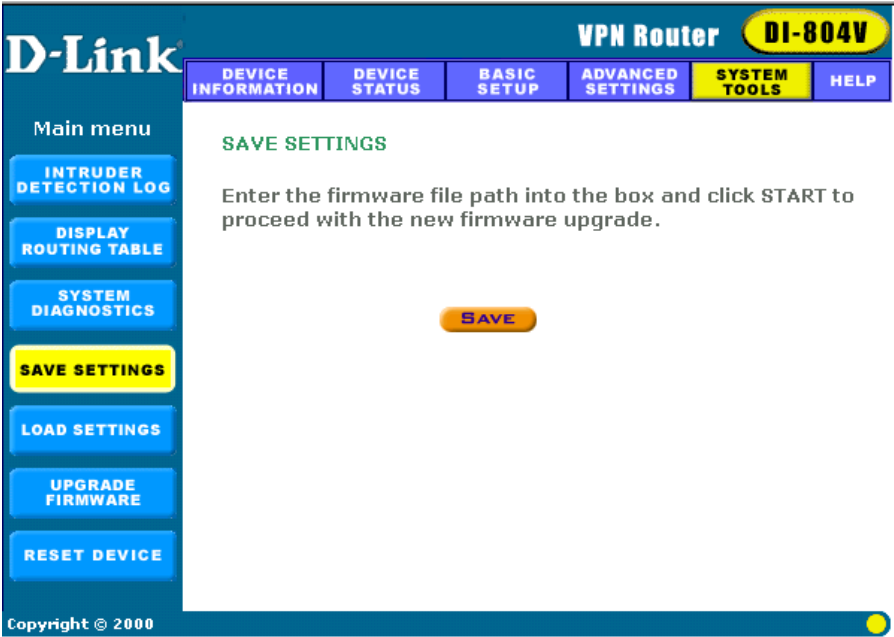
LAN IP: 192.168.0.100 , MAC: 00:40:CA:28:A5:04

**WAN MAC Table**

Copyright © 2000

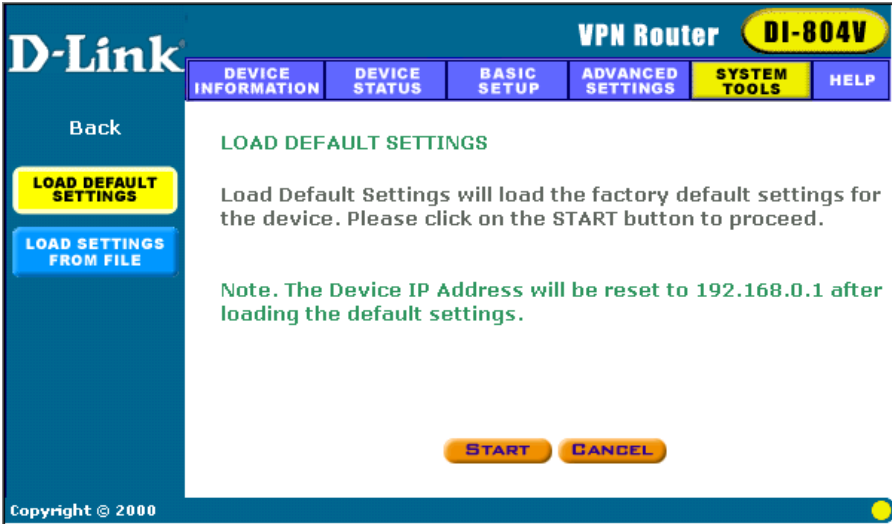
# Save Settings

This allows you to save the configuration to a file. If you would like to do this, click **Save** to save your current settings to a file. Then click **save this file to disk** in the browsing wizard.



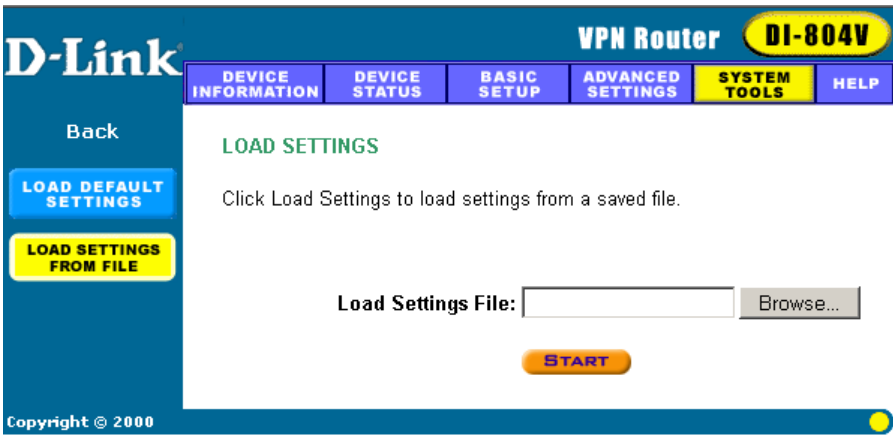
# Load Settings - Load Default Settings

This allows you to load the original default settings of your VPN Internet Gateway.



# Load Settings - Load Settings From File

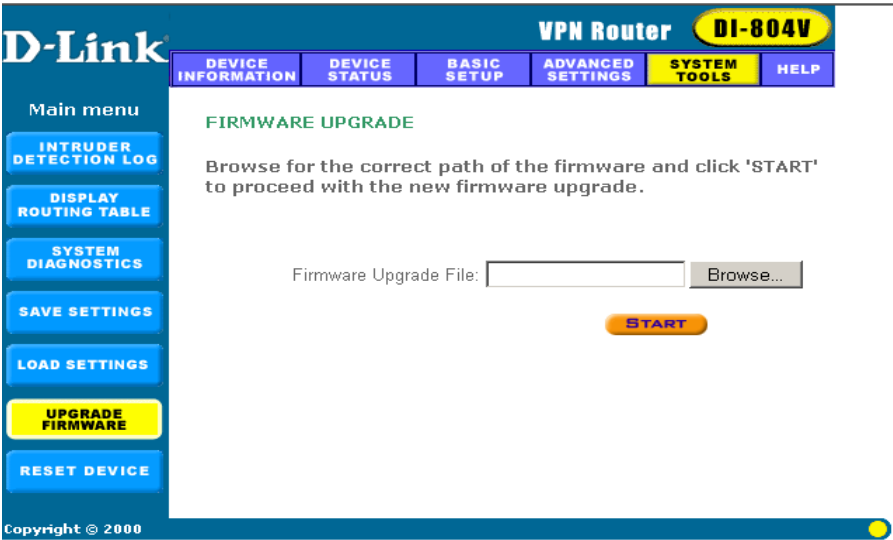
This allows you to load the settings from a file.  
Upgrade Firmware





# Upgrade Firmware

The upgrade firmware option allows you to upgrade the latest firmware to your VPN Internet Gateway.



# Reset Device

Resetting the device will restart it. Click on the **START** button to restart.



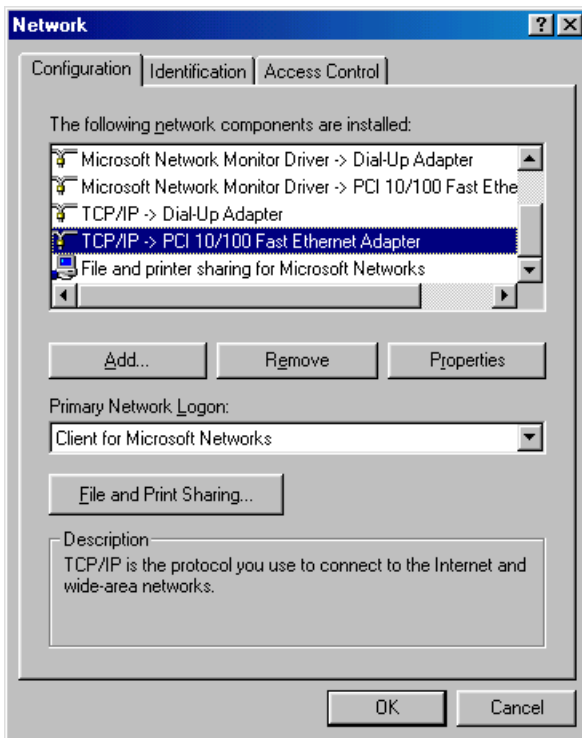
# Configuring Your PCs to Connect to the DI-804V Router

If you **do not** wish to set a static IP address on your PC, you will need to configure your PC to request an IP address from the gateway.

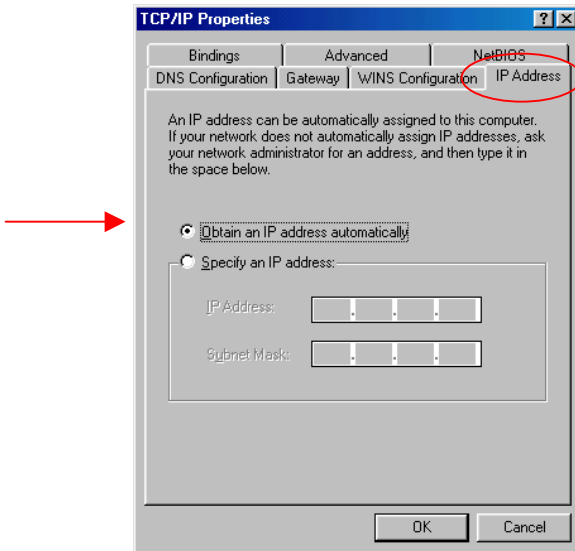
Click the Start button, select Settings, select Control Panel.

Double-click the Network icon.

In the configuration tab, select the TCP/IP protocol line that has been associated with your network card/adaptor. If there is no TCP/IP line listed, you will need to install TCP/IP now.



Click the **Properties** button, then choose the **IP ADDRESS** tab. Select **Obtain an IP address automatically**.



After clicking **OK**, windows might ask you to restart the PC. Click **Yes**.

## CONFIRM YOUR PC'S IP CONFIGURATION

There are two tools which are great for finding out a computer's IP configuration: MAC address and default gateway.

- **WINIPCFG (for Windows 95/98)**

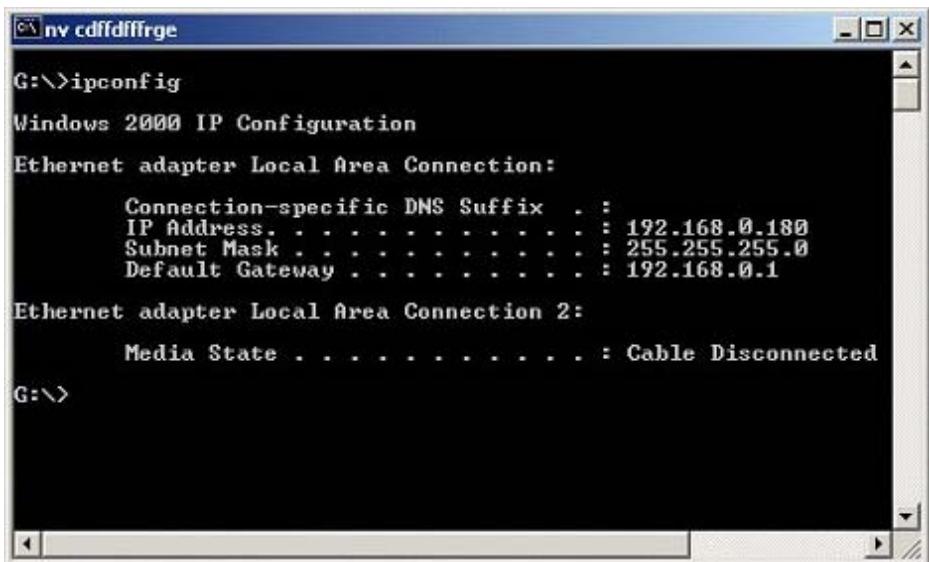
Inside the windows 95/98 Start button, select Run and type winipcfg. In the example below this computer has an IP address of 192.168.0.100 and the default gateway is 192.168.0.1. The default gateway should be the network device IP address. The MAC address in windows 95/98 is called the Adapter Address.

**NOTE:** You can also type **winipcfg** in the DOS command prompt.



- IPCONFIG (for Windows 2000/NT/XP)

In the DOS command prompt type **IPCONFIG** and press **Enter**. Your PC IP information will be displayed as shown below.

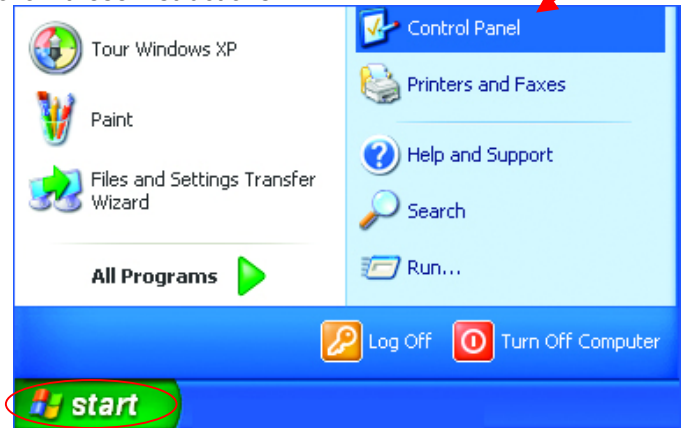


# Assigning a Static IP Address

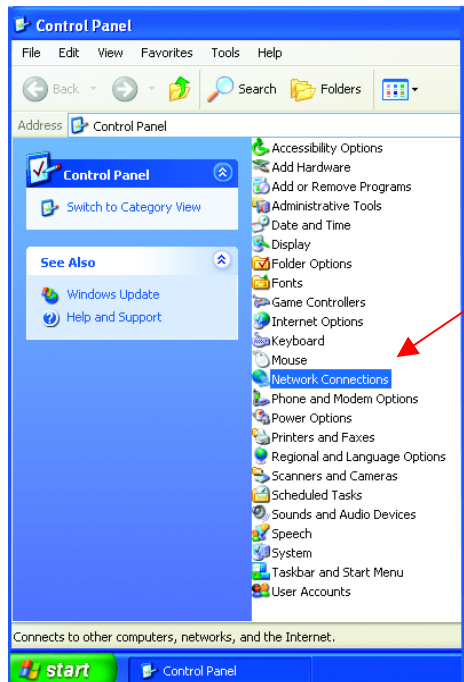
Note: Residential Gateways/Broadband Routers will automatically assign IP Addresses to the computers on the network, using DHCP (Dynamic Host Configuration Protocol) technology. If you are using a DHCP-capable Gateway/Router you will not need to assign Static IP Addresses.

If you are not using a DHCP capable Gateway/Router, or you need to assign a Static IP Address, please follow these instructions:

Go to **START**  
Double-click on  
**Control Panel**

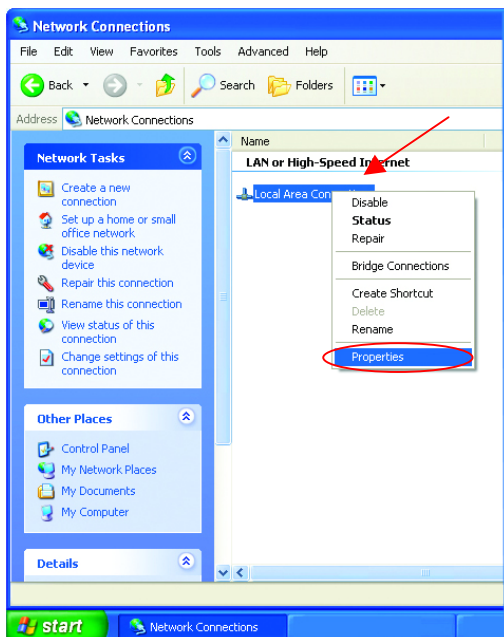


Double-click on  
**Network Connections**



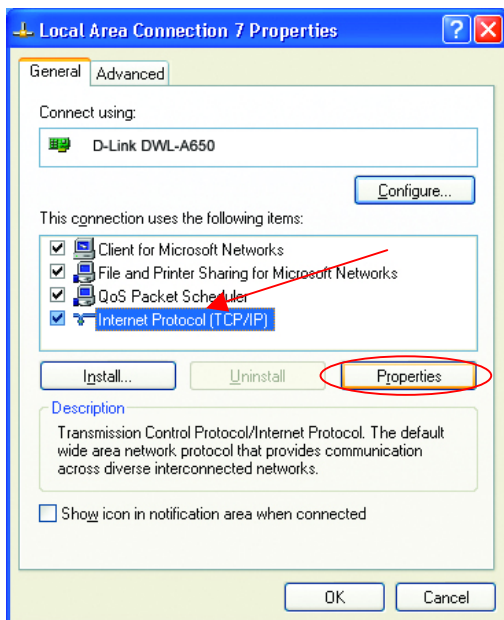
Right-click on **Local Area Connections**.

Double-click **Properties**



Highlight **Internet Protocol (TCP/IP)**

Click **Properties**



Select **Use the following IP address** in the Internet Protocol (TCP/IP) Properties window.

Input your IP address and subnet mask. (The IP Addresses on your network must be within the same range. For example, if one computer has an IP Address of 192.168.0.2, the other computers should have IP Addresses that are sequential, like 192.168.0.3 and 192.168.0.4. The subnet mask must be the same for all the computers on the network.)

Input your DNS server addresses.

The DNS server information will be provided by your ISP (Internet Service Provider.)

The screenshot shows the 'Internet Protocol (TCP/IP) Properties' dialog box. The 'General' tab is active. The text at the top states: 'You can get IP settings assigned automatically if your network supports this capability. Otherwise, you need to ask your network administrator for the appropriate IP settings.' Below this, there are two radio button options. The first is 'Obtain an IP address automatically' (unselected). The second is 'Use the following IP address:' (selected). This option has three input fields: 'IP address:' with the value '192 . 168 . 0 . 2', 'Subnet mask:' with the value '255 . 255 . 255 . 0', and 'Default gateway:' with the value '. . .'. Below these, there are two more radio button options. The first is 'Obtain DNS server address automatically' (unselected). The second is 'Use the following DNS server addresses:' (selected). This option has two input fields: 'Preferred DNS server:' with the value '. . . |' and 'Alternate DNS server:' with the value '. . . .'. At the bottom right of the dialog, there is an 'Advanced...' button. At the very bottom, there are 'OK' and 'Cancel' buttons. The 'OK' button is circled in red.

Click **OK**

You have completed the assignment of a Static IP Address. (You do not need to assign a Static IP Address if you have a DHCP-capable Gateway/Router.)

# Technical Support

You can find software updates and user documentation on the D-Link website.

D-Link provides free technical support for customers within the United States and within Canada for the duration of the warranty period on this product.

U.S. and Canadian customers can contact D-Link technical support through our web site, or by phone.

## Tech Support for customers within the United States:

### ***D-Link Technical Support over the Telephone:***

(877) 453-5465

24 hours a day, seven days a week.

### ***D-Link Technical Support over the Internet:***

<http://support.dlink.com>

email:[support@dlink.com](mailto:support@dlink.com)

## Tech Support for customers within Canada:

### ***D-Link Technical Support over the Telephone:***

(800) 361-5265

Monday to Friday 7:30am to 12:00am EST

### ***D-Link Technical Support over the Internet:***

<http://support.dlink.ca>

email:[support@dlink.ca](mailto:support@dlink.ca)

*When contacting technical support, please provide the following information:*

- *Serial number of the unit*
- *Model number or product name*
- *Software type and version number*



Subject to the terms and conditions set forth herein, D-Link Systems, Inc. ("D-Link") provides this Limited Warranty:

- Only to the person or entity that originally purchased the product from D-Link or its authorized reseller or distributor, and
- Only for products purchased and delivered within the fifty states of the United States, the District of Columbia, U.S. Possessions or Protectorates, U.S. Military Installations, or addresses with an APO or FPO.

**Limited Warranty:** D-Link warrants that the hardware portion of the D-Link product described below ("Hardware") will be free from material defects in workmanship and materials under normal use from the date of original retail purchase of the product, for the period set forth below ("Warranty Period"), except as otherwise stated herein.

- Hardware (excluding power supplies and fans): One (1) year
- Power supplies and fans: One (1) year
- Spare parts and spare kits: Ninety (90) days

The customer's sole and exclusive remedy and the entire liability of D-Link and its suppliers under this Limited Warranty will be, at D-Link's option, to repair or replace the defective Hardware during the Warranty Period at no charge to the original owner or to refund the actual purchase price paid. Any repair or replacement will be rendered by D-Link at an Authorized D-Link Service Office. The replacement hardware need not be new or have an identical make, model or part. D-Link may, at its option, replace the defective Hardware or any part thereof with any reconditioned product that D-Link reasonably determines is substantially equivalent (or superior) in all material respects to the defective Hardware. Repaired or replacement hardware will be warranted for the remainder of the original Warranty Period or ninety (90) days, whichever is longer, and is subject to the same limitations and exclusions. If a material defect is incapable of correction, or if D-Link determines that it is not practical to repair or replace the defective Hardware, the actual price paid by the original purchaser for the defective Hardware will be refunded by D-Link upon return to D-Link of the defective Hardware. All Hardware or part thereof that is replaced by D-Link, or for which the purchase price is refunded, shall become the property of D-Link upon replacement or refund.

**Limited Software Warranty:** D-Link warrants that the software portion of the product ("Software") will substantially conform to D-Link's then current functional specifications for the Software, as set forth in the applicable documentation, from the date of original retail purchase of the Software for a period of ninety (90) days ("Software Warranty Period"), provided that the Software is properly installed on approved hardware and operated as contemplated in its documentation. D-Link further warrants that, during the Software Warranty Period, the magnetic media on which D-Link delivers the Software will be free of physical defects. The customer's sole and exclusive remedy and the entire liability of D-Link and its suppliers under this Limited Warranty will be, at D-Link's option, to replace the non-conforming Software (or defective media) with software that substantially conforms to D-Link's functional specifications for the Software or to refund the portion of the actual purchase price paid that is attributable to the Software. Except as otherwise agreed by D-Link in writing, the replacement Software is provided only to the original licensee, and is subject to the terms and conditions of the license granted by D-Link for the Software. Replacement Software will be warranted for the remainder of the original Warranty Period and is subject to the same limitations and exclusions. If a material non-conformance is incapable of correction, or if D-Link determines in its sole discretion that it is not practical to replace the non-conforming Software, the price paid by the original licensee for the non-conforming Software will be refunded by D-Link; provided that the non-conforming Software (and all copies thereof) is first returned to D-Link. The license granted respecting any Software for which a refund is given automatically terminates.

**Non-Applicability of Warranty:** The Limited Warranty provided hereunder for Hardware and Software portions of D-Link's products will not be applied to and does not cover any refurbished product and any product purchased through the inventory clearance or liquidation sale or other sales in which D-Link, the sellers, or the liquidators expressly disclaim their warranty obligation pertaining to the product and in that case, the product is being sold "As-Is" without any warranty whatsoever including, without limitation, the Limited Warranty as described herein, notwithstanding anything stated herein to the contrary.

**Submitting A Claim:** The customer shall return the product to the original purchase point based on its return policy. In case the return policy period has expired and the product is within warranty, the customer shall submit a claim to D-Link as outlined below:

- The customer must submit with the product as part of the claim a written description of the Hardware defect or Software nonconformance in sufficient detail to allow D-Link to confirm the same, along with proof of purchase of the product (such as a copy of the dated purchase invoice for the product) if the product is not registered.
- The customer must obtain a Case ID Number from D-Link Technical Support at 1-877-453-5465, who will attempt to assist the customer in resolving any suspected defects with the product. If the product is considered defective, the customer must obtain a Return Material Authorization ("RMA") number by completing the RMA form and entering the assigned Case ID Number at <https://rma.dlink.com/>.
- After an RMA number is issued, the defective product must be packaged securely in the original or other suitable shipping package to ensure that it will not be damaged in transit, and the RMA number must be prominently marked on the outside of the package. Do not include any manuals or accessories in the shipping package. D-Link will only replace the defective portion of the product and will not ship back any accessories.
- The customer is responsible for all in-bound shipping charges to D-Link. No Cash on Delivery ("COD") is allowed. Products sent COD will either be rejected by D-Link or become the property of D-Link. Products shall be fully insured by the customer and shipped to **D-Link Systems, Inc., 17595 Mt. Herrmann, Fountain Valley, CA 92708**. D-Link will not be held responsible for any packages that are lost in transit to D-Link. The repaired or replaced packages will be shipped to the customer via UPS Ground or any common carrier selected by D-Link. Return shipping charges shall be prepaid by D-Link if you use an address in the United States, otherwise we will ship the product to you freight collect. Expedited shipping is available upon request and provided shipping charges are prepaid by the customer.

D-Link may reject or return any product that is not packaged and shipped in strict compliance with the foregoing requirements, or for which an RMA number is not visible from the outside of the package. The product owner agrees to pay D-Link's reasonable handling and return shipping charges for any product that is not packaged and shipped in accordance with the foregoing requirements, or that is determined by D-Link not to be defective or non-conforming.

**What Is Not Covered:** The Limited Warranty provided herein by D-Link does not cover: Products that, in D-Link's judgment, have been subjected to abuse, accident, alteration, modification, tampering, negligence, misuse, faulty installation, lack of reasonable care, repair or service in any way that is not contemplated in the documentation for the product, or if the model or serial number has been altered, tampered with, defaced or removed; Initial installation, installation and removal of the product for repair, and shipping costs; Operational adjustments covered in the operating manual for the product, and normal maintenance; Damage that occurs in shipment, due to act of God, failures due to power surge, and cosmetic damage; Any hardware, software, firmware or other products or services provided by anyone other than D-Link; and Products that have been purchased from inventory clearance or liquidation sales or other sales in which D-Link, the sellers, or the liquidators expressly disclaim their warranty obligation pertaining to the product. While necessary maintenance or repairs on your Product can be performed by any company, we recommend that you use only an Authorized D-Link Service Office. Improper or incorrectly performed maintenance or repair voids this Limited Warranty.

**Disclaimer of Other Warranties:** EXCEPT FOR THE LIMITED WARRANTY SPECIFIED HEREIN, THE PRODUCT IS PROVIDED "AS-IS" WITHOUT ANY WARRANTY OF ANY KIND WHATSOEVER INCLUDING, WITHOUT LIMITATION, ANY WARRANTY OF MERCHANTABILITY, FITNESS FOR A PARTICULAR PURPOSE AND NON-INFRINGEMENT. IF ANY IMPLIED WARRANTY CANNOT BE DISCLAIMED IN ANY TERRITORY WHERE A PRODUCT IS SOLD, THE DURATION OF SUCH IMPLIED WARRANTY SHALL BE LIMITED TO THE DURATION OF THE APPLICABLE WARRANTY PERIOD SET FORTH ABOVE. EXCEPT AS EXPRESSLY COVERED UNDER THE LIMITED WARRANTY PROVIDED HEREIN, THE ENTIRE RISK AS TO THE QUALITY, SELECTION AND PERFORMANCE OF THE PRODUCT IS WITH THE PURCHASER OF THE PRODUCT.

**Limitation of Liability:** TO THE MAXIMUM EXTENT PERMITTED BY LAW, D-LINK IS NOT LIABLE UNDER ANY CONTRACT, NEGLIGENCE, STRICT LIABILITY OR OTHER LEGAL OR EQUITABLE THEORY FOR ANY LOSS OF USE OF THE PRODUCT, INCONVENIENCE OR DAMAGES OF ANY CHARACTER, WHETHER DIRECT, SPECIAL, INCIDENTAL OR CONSEQUENTIAL (INCLUDING, BUT NOT LIMITED TO, DAMAGES FOR LOSS OF GOODWILL, LOSS OF REVENUE OR PROFIT, WORK STOPPAGE, COMPUTER FAILURE OR MALFUNCTION, FAILURE OF OTHER EQUIPMENT OR COMPUTER PROGRAMS TO WHICH D-LINK'S PRODUCT IS CONNECTED WITH, LOSS OF INFORMATION OR DATA CONTAINED IN, STORED ON, OR INTEGRATED WITH ANY PRODUCT RETURNED TO D-LINK FOR WARRANTY SERVICE) RESULTING FROM THE USE OF THE PRODUCT, RELATING TO WARRANTY SERVICE, OR ARISING OUT OF ANY BREACH OF THIS LIMITED WARRANTY, EVEN IF D-LINK HAS BEEN ADVISED OF THE POSSIBILITY OF SUCH DAMAGES. THE SOLE REMEDY FOR A BREACH OF THE FOREGOING LIMITED WARRANTY IS REPAIR, REPLACEMENT OR REFUND OF THE DEFECTIVE OR NON-CONFORMING PRODUCT. THE MAXIMUM LIABILITY OF D-LINK UNDER THIS WARRANTY IS LIMITED TO THE PURCHASE PRICE OF THE PRODUCT COVERED BY THE WARRANTY. THE FOREGOING EXPRESS WRITTEN WARRANTIES AND REMEDIES ARE EXCLUSIVE AND ARE IN LIEU OF ANY OTHER WARRANTIES OR REMEDIES, EXPRESS, IMPLIED OR STATUTORY.

**Governing Law:** This Limited Warranty shall be governed by the laws of the State of California. Some states do not allow exclusion or limitation of incidental or consequential damages, or limitations on how long an implied warranty lasts, so the foregoing limitations and exclusions may not apply. This Limited Warranty provides specific legal rights and you may also have other rights which vary from state to state.

**Trademarks:** D-Link is a registered trademark of D-Link Systems, Inc. Other trademarks or registered trademarks are the property of their respective owners.

**Copyright Statement:** No part of this publication or documentation accompanying this product may be reproduced in any form or by any means or used to make any derivative such as translation, transformation, or adaptation without permission from D-Link Corporation/D-Link Systems, Inc., as stipulated by the United States Copyright Act of 1976 and any amendments thereto. Contents are subject to change without prior notice. Copyright 2005 by D-Link Corporation/D-Link Systems, Inc. All rights reserved.

**CE Mark Warning:** This is a Class B product. In a domestic environment, this product may cause radio interference, in which case the user may be required to take adequate measures.

**FCC Statement:** This equipment has been tested and found to comply with the limits for a Class B digital device, pursuant to part 15 of the FCC Rules. These limits are designed to provide reasonable protection against harmful interference in a residential installation. This equipment generates, uses, and can radiate radio frequency energy and, if not installed and used in accordance with the instructions, may cause harmful interference to radio communication. However, there is no guarantee that interference will not occur in a particular installation. If this equipment does cause harmful interference to radio or television reception, which can be determined by turning the equipment off and on, the user is encouraged to try to correct the interference by one or more of the following measures:

- Reorient or relocate the receiving antenna.
- Increase the separation between the equipment and receiver.
- Connect the equipment into an outlet on a circuit different from that to which the receiver is connected.
- Consult the dealer or an experienced radio/TV technician for help.

**For detailed warranty information applicable to products purchased outside the United States, please contact the corresponding local D-Link office.**

**Register your product online at:**  
**<http://support.dlink.com/register>**



Product registration is entirely voluntary and failure to complete or return this form will not diminish your warranty rights.